

CAROLINA COMMONS

6237 CAROLINA COMMONS DRIVE
INDIAN LAND | SOUTH CAROLINA



FOR LEASE

©2024 The information contained herein was obtained from sources believed reliable; however, Transwestern Southeast Healthcare Services makes no guarantees, warranties, or representations as to the completeness or accuracy thereof. The presentation of this property is submitted subject to errors, omissions, changes of price or conditions prior to sale or lease, or withdrawal without notice.

PROPERTY OVERVIEW



TOTALE BUILDING AREA:
± 60,000SF



AVAILABLE SPACE:
SUITE 320: ± 2,308 RSF



AVAILABLE DATE:
Immediate



YEAR BUILT:
2009



LEASE RATE:
\$35.00/SF



LEASE TYPE:
Full Service



PROPERTY OVERVIEW

- Three story, Class A, multi-tenant medical office building
- Features a porte cochere for patient drop-off, ample parking, and monument signage opportunities
- Co-tenants include OrthoCarolina, Novant Indian Land Primary Care, and Metrolina Eye Associates
- Adjacent to highly successful Sun City Carolina Lakes – an active adult community, and across the street from Atrium-Carolina Lakes Medical Plaza with a significant primary care presence
- Excellent opportunity to access a large patient base in the Lancaster/Fort Mill/South Charlotte area

CONTACT:

John V. Lopez, CCIM, RPA

404.842.6562

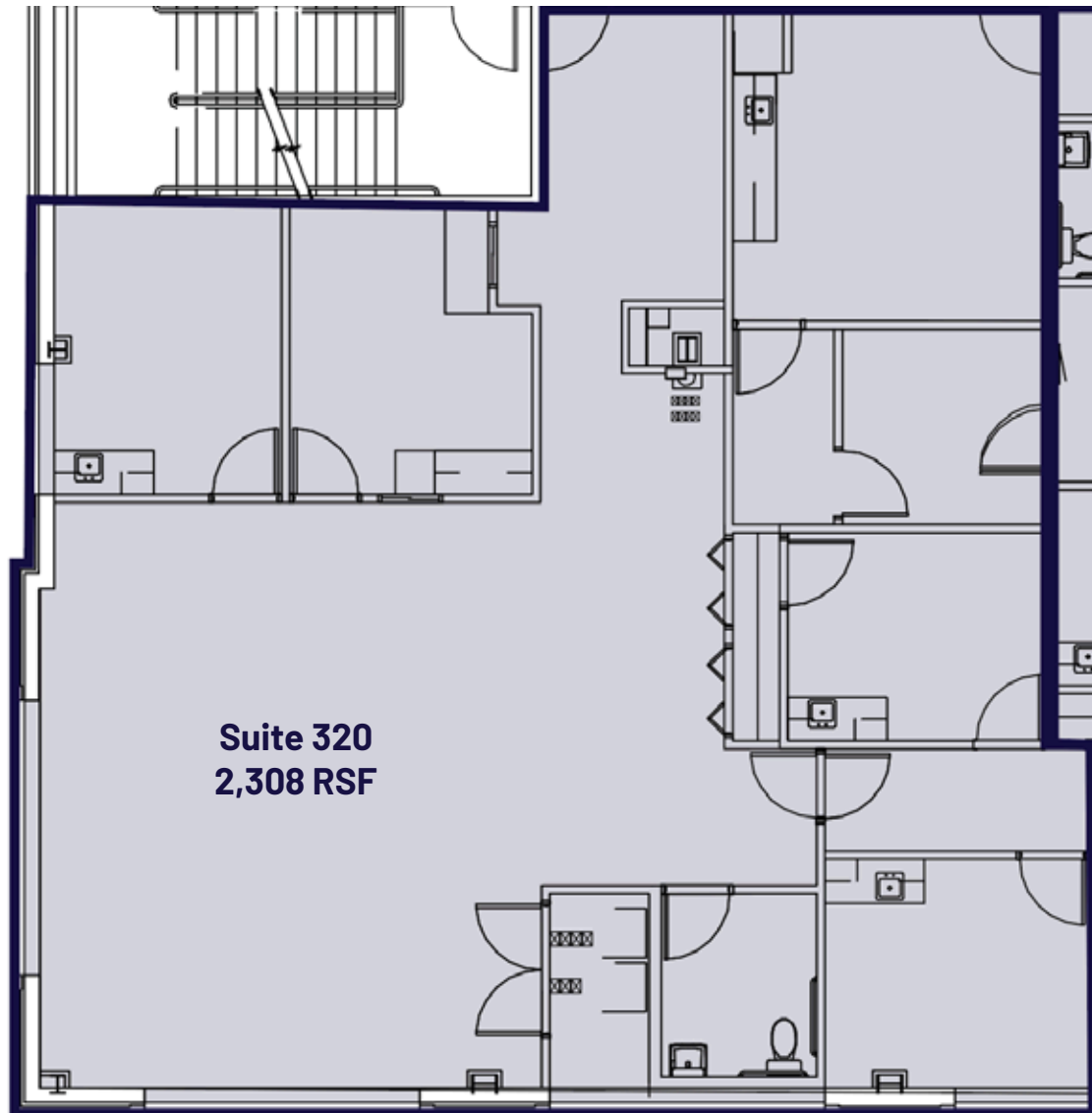
john.lopez@transwestern.com

Steve Hall

404.842.6560

steve.hall@transwestern.com

FLOORPLAN



AREA MAP

