



4150 WASHINGTON ROAD

McMURRAY, PA 15317 • WASHINGTON COUNTY



AVAILABLE OFFICE
SPACE FOR LEASE

GROUND FLOOR:
3,105 SF±: \$21.95 PSF

FIRST FLOOR:
2,917 SF±: \$23.95 PSF
338 SF±: \$23.95 PSF



KIM CLACKSON
Executive Vice President
412-471-3018
kim.clackson@cbre.com

NICOLE CLACKSON ROSSMAN
Senior Associate
412-471-3385
nicole.clackson@cbre.com

All Lease Rates Are Full Service

One Oxford Centre | 301 Grant Street, Suite 4000 | Pittsburgh, PA 15219 | www.cbre.com



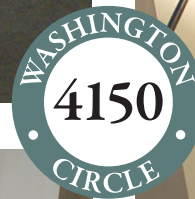
PROPERTY OVERVIEW

Total Building Size: 18,737 SF±

Average Floor Size: 6,244 SF±

Signage: Available on the building signage and on the monument sign along Rt. 19 for a monthly charge

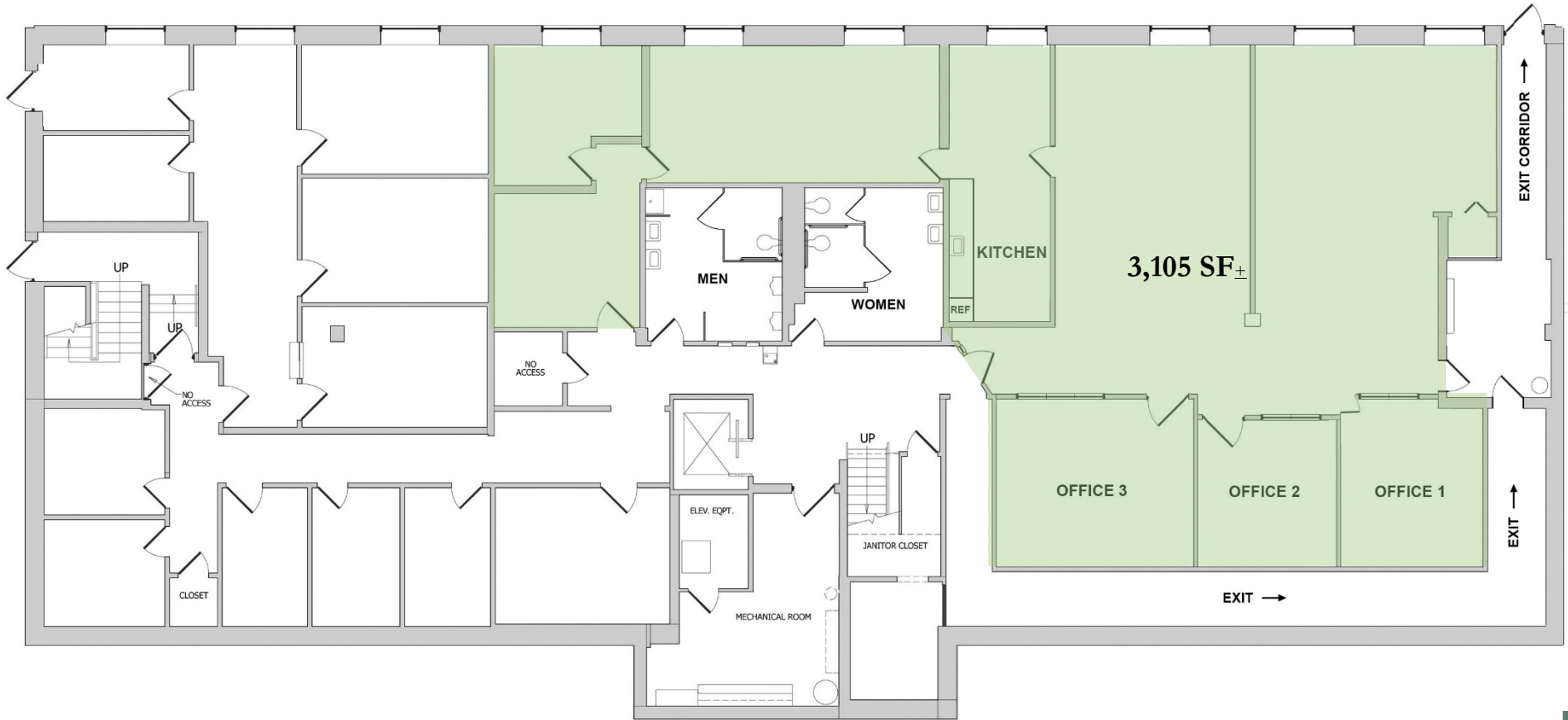
- Building Features:
- Three-story office building
 - Access to traffic light for north & south access to Rt. 19
 - Rear views overlooking Canonsburg Lake
 - Elevator
 - Recent renovations:
 - Updated building facade
 - Improvements to HVAC system
 - Improved parking lot
 - Interior cosmetic changes
 - New building signage
 - New restrooms







GROUND FLOOR AVAILABILITY



©2025 CBRE, Inc. All rights reserved. This information has been obtained from sources believed reliable, but has not been verified for accuracy or completeness. You should conduct a careful, independent investigation of the property and verify all information. Any reliance on this information is solely at your own risk. CBRE and the CBRE logo are service marks of CBRE, Inc. All other marks displayed on this document are the property of their respective owners, and the use of such logos does not imply any affiliation with or endorsement of CBRE.

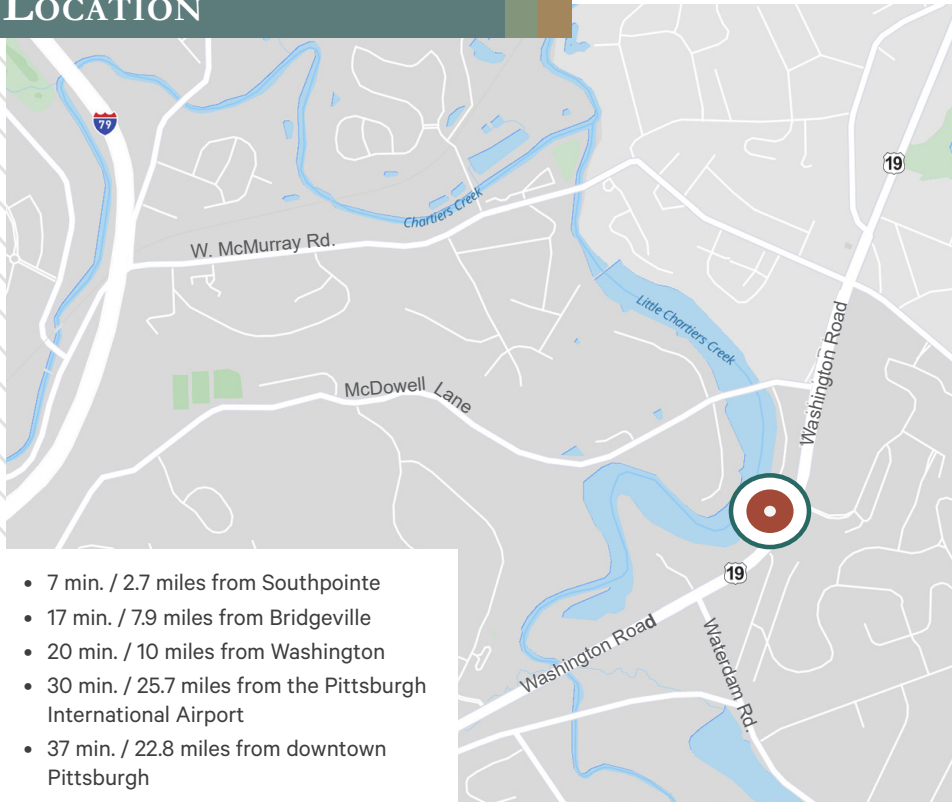


1ST FLOOR AVAILABILITY

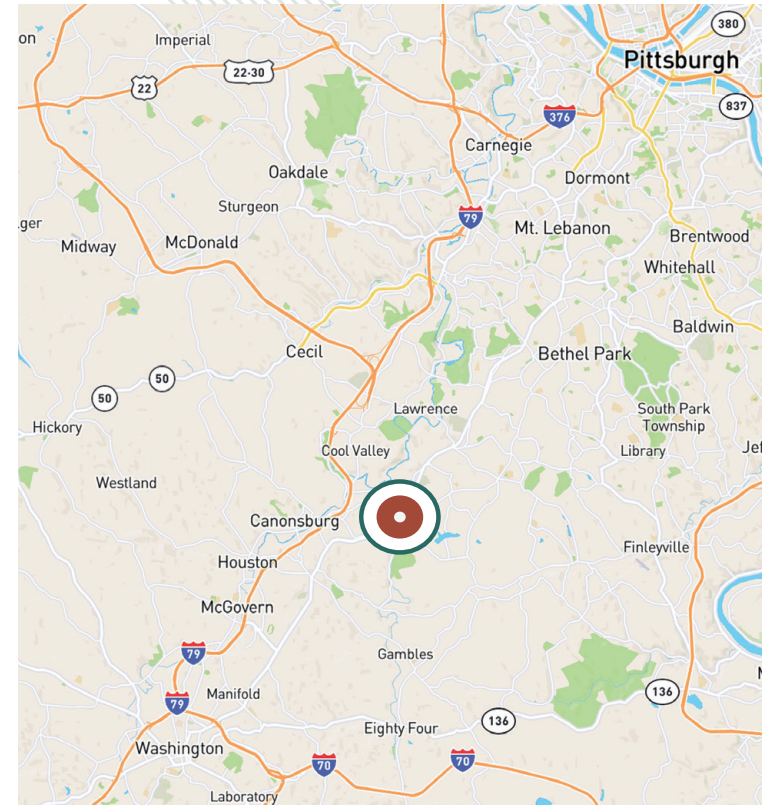


©2025 CBRE, Inc. All rights reserved. This information has been obtained from sources believed reliable, but has not been verified for accuracy or completeness. You should conduct a careful, independent investigation of the property and verify all information. Any reliance on this information is solely at your own risk. CBRE and the CBRE logo are service marks of CBRE, Inc. All other marks displayed on this document are the property of their respective owners, and the use of such logos does not imply any affiliation with or endorsement of CBRE.

LOCATION



- 7 min. / 2.7 miles from Southpointe
- 17 min. / 7.9 miles from Bridgeville
- 20 min. / 10 miles from Washington
- 30 min. / 25.7 miles from the Pittsburgh International Airport
- 37 min. / 22.8 miles from downtown Pittsburgh



©2025 CBRE, Inc. All rights reserved. This information has been obtained from sources believed reliable, but has not been verified for accuracy or completeness. You should conduct a careful, independent investigation of the property and verify all information. Any reliance on this information is solely at your own risk.