

3708 WILLOW RIDGE RD
LEXINGTON, KY 40514



THE GIBSON COMPANY
COMMERCIAL REAL ESTATE SERVICES



PROPERTY FEATURES

- ⇒ Ground Floor Office Condo
- ⇒ 1,021 SF
- ⇒ Former Dental Space Fit-Up
- ⇒ 3 Operatories w/ Plumbing
- ⇒ Lab Space
- ⇒ Break Room (Currently Used As 4th Operatory)
- ⇒ 1 Restroom
- ⇒ Reception & Waiting Area
- ⇒ Association Fee: \$2,921/yr [\[Link to Association Docs\]](#)
- ⇒ **FOR SALE : \$179,900 (\$176/SF)**



Located behind Millpond Shopping Center

Near Man-O-War and Boston Road



Brian Erwin SIOR, CCIM

859-492-5416

berwin@thegibsoncompany.com

www.thegibsoncompany.com

The Gibson Company
1050 Monarch St #200
Lexington, KY 40513





WAITING AREA



RECEPTION



OPERATORY #1



OPERATORY #2



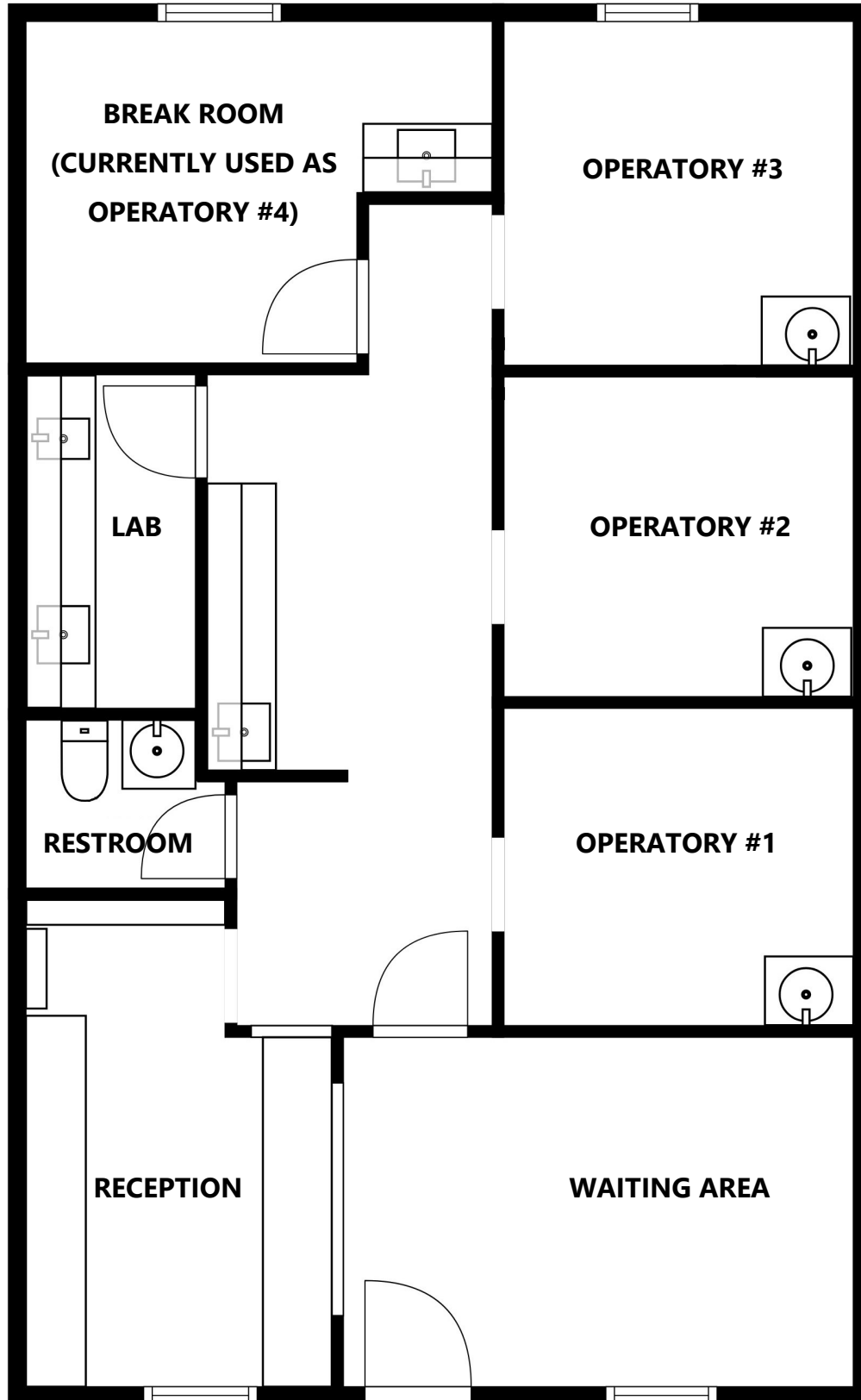
OPERATORY #3



LAB



FLOORPLAN



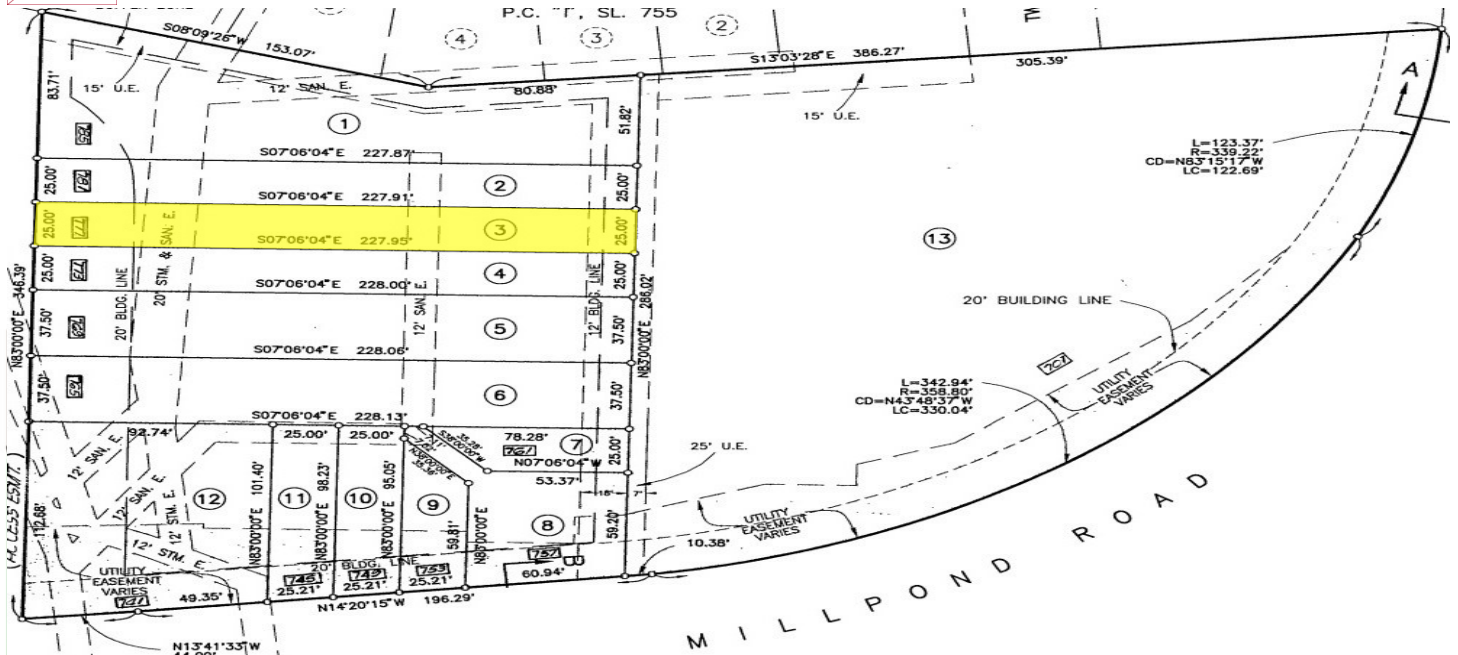
www.thegibsoncompany.com

The Gibson Company
1050 Monarch St #200
Lexington, KY 40513





LOCATION



This drawing is conceptual only and for the convenience of reference. It should not be relied upon as representation express or implied, of the final size, location or dimensions of any lot or building area.