

2530  
Gateway Rd.

FOR SALE

6,200 SF

SAN DIEGO, CA



Freestanding Building in Bressi Ranch

CBRE



## PROJECT FEATURES

- Contemporary urban look with open ceilings, unfinished masonry block walls and aluminum decorative store front doors
- Located within the highly amenitized Bressi Ranch area
- Walking distance to retail amenities
- Building signage for each suite

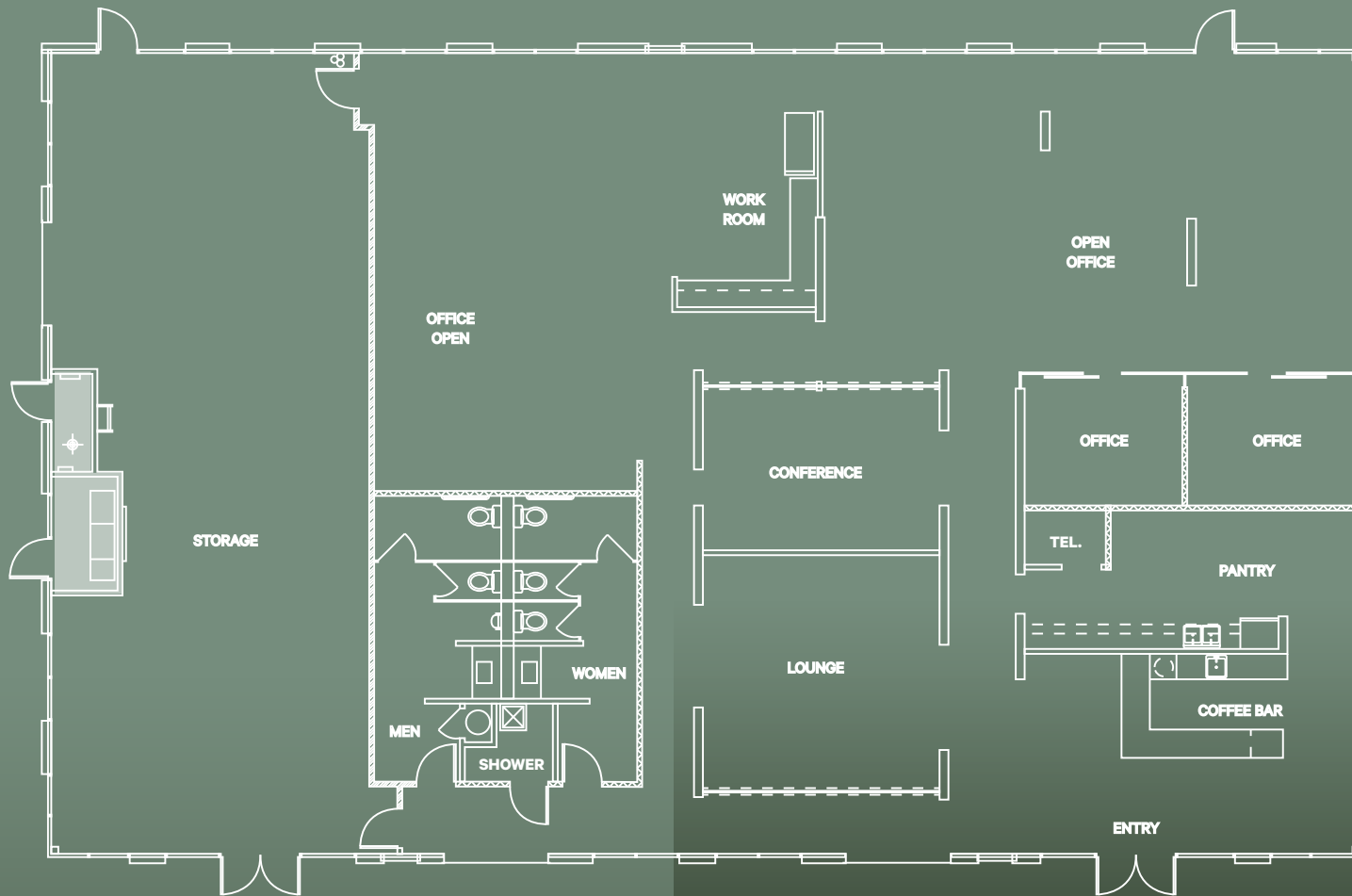


Size

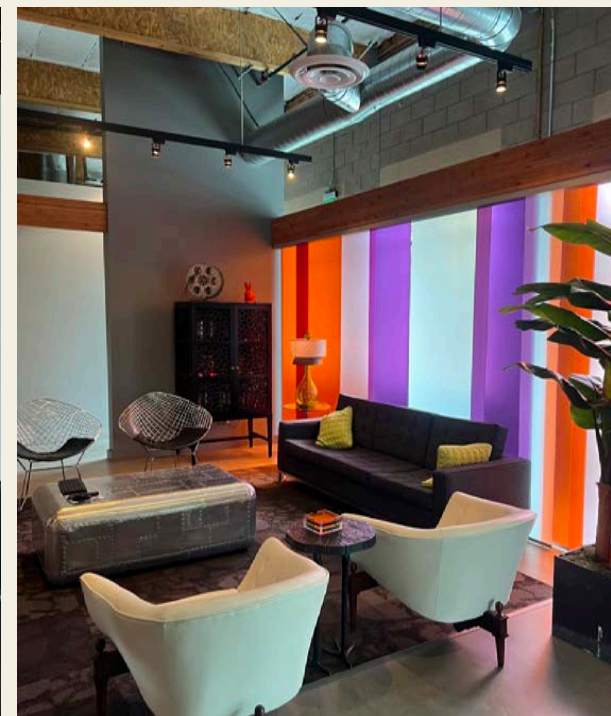
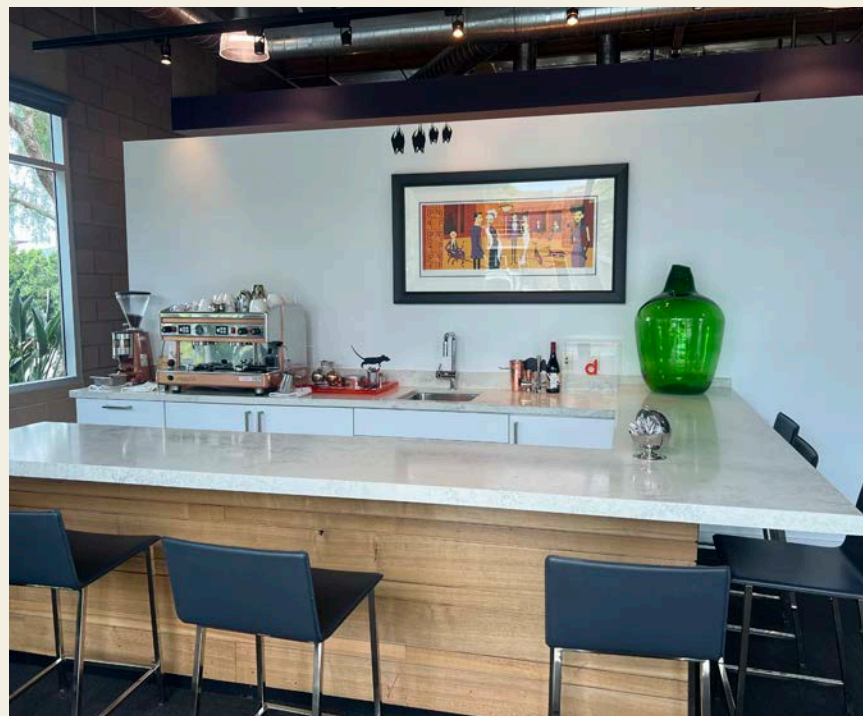
6,200 RSF

Sale Price

\$525/SF













# 2530

Gateway Rd.

## contact us

### Chris Williams

Senior Vice President

+1 858 646 4743

[chris.williams1@cbre.com](mailto:chris.williams1@cbre.com)

Lic. 01791013

### Victoria Soto

Sales Assistant

+1 858 546 2675

[victoria.soto@cbre.com](mailto:victoria.soto@cbre.com)

Lic. 02139648

© 2025 CBRE, Inc. CBRE, Inc. All rights reserved. This information has been obtained from sources believed reliable but has not been verified for accuracy or completeness. CBRE, Inc. makes no guarantee, representation or warranty and accepts no responsibility or liability as to the accuracy, completeness, or reliability of the information contained herein. You should conduct a careful, independent investigation of the property and verify all information. Any reliance on this information is solely at your own risk. CBRE and the CBRE logo are service marks of CBRE, Inc. All other marks displayed on this document are the property of their respective owners, and the use of such logos does not imply any affiliation with or endorsement of CBRE. Photos herein are the property of their respective owners. Use of these images without the express written consent of the owner is prohibited. CPM 2530 Gateway\_BRO\_Williams\_v02 11/06/25

# CBRE