



For lease

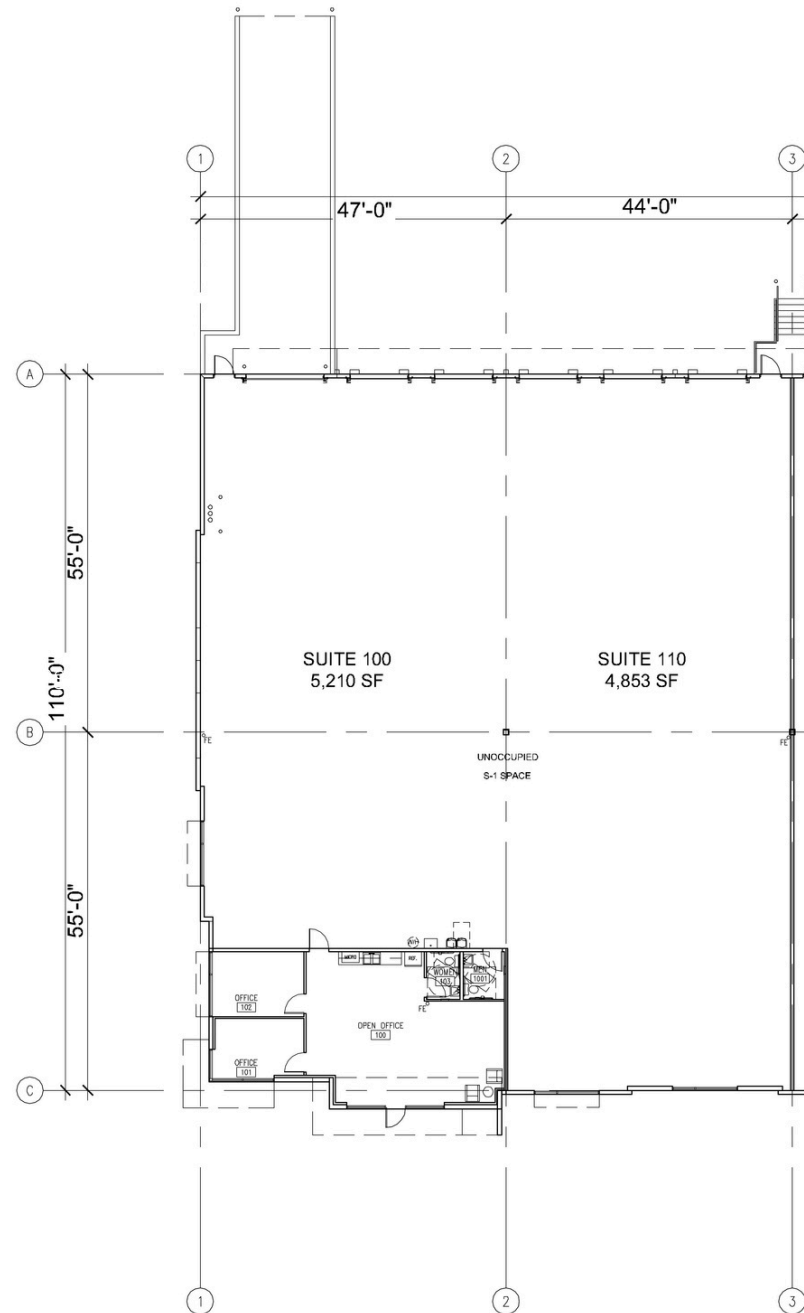
Winter Garden Commerce Center

681 Garden Commerce Parkway, Winter Garden, FL 34787

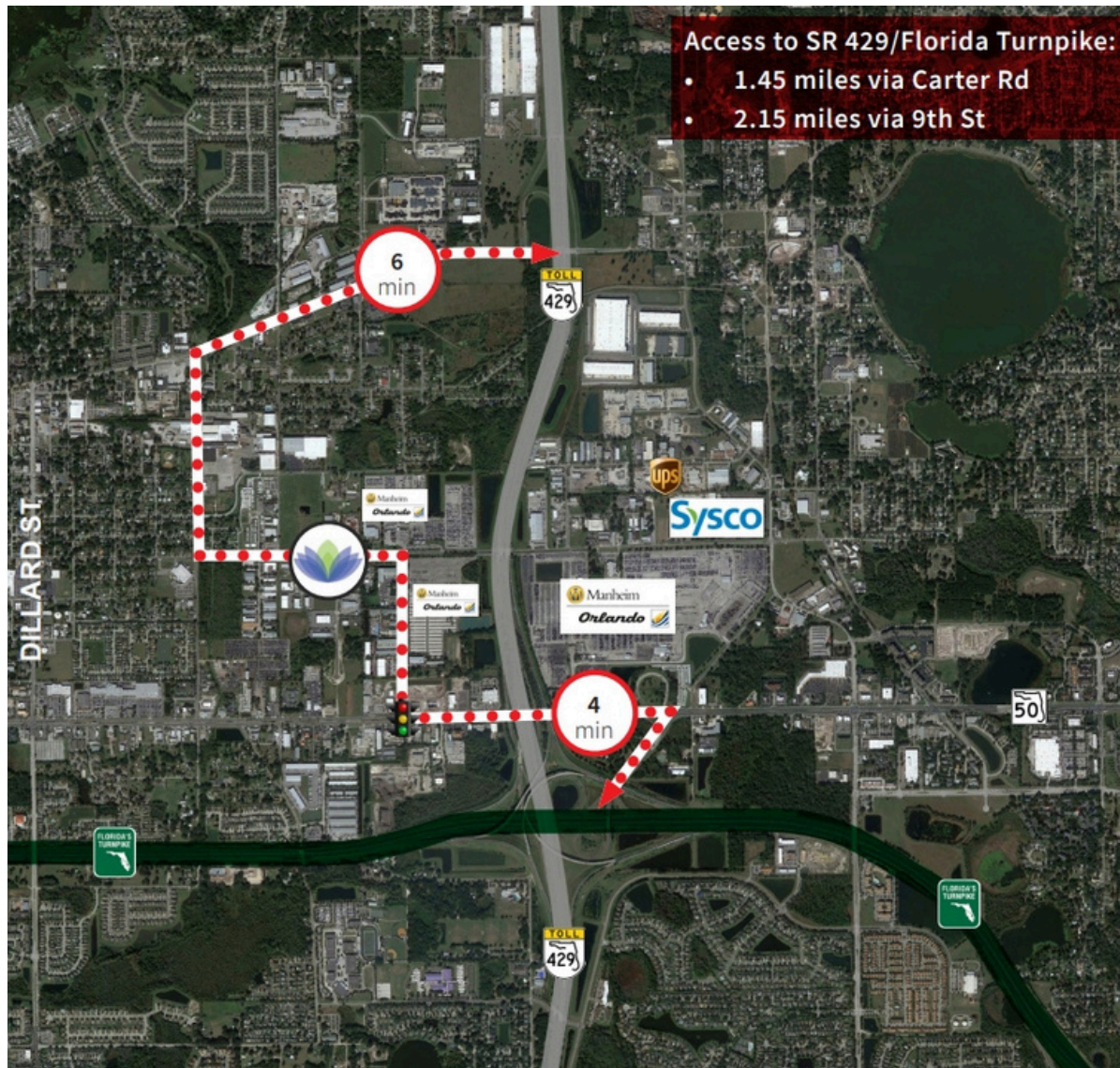
Suite 100-110

Property specifications

- 10,063 SF available
- 1,047 SF of office
- 24' clear height
- 4 docks
- 1 ramp
- Rear loading
- 110' building depth
- ESFR sprinklers
- LED lighting
- Tilt wall construction
- 140' shared truck court
- Zoning - PID, City of Winter Garden
- Built in 2017
- Available April 1, 2026
- \$16.75/SF NNN



Access and location



Location highlights

- Excellent access to Western Beltway (SR 429), Floridas' Turnpike, East-West Expressway (SR 408) and Colonial Drive
- Frontage on Story Road
- Minutes from downtown Winter Garden, the City of Ocoee, and numerous retailers and food service providers
- Class A buildings and features



JLL**Cameron Montgomery**

Vice President

Cameron.Montgomery@jll.com

+1 407 982 8650

Bobby Isola, SIOR,CCIM

Executive Managing Director

Bobby.Isola@jll.com

+1 407 930 1804