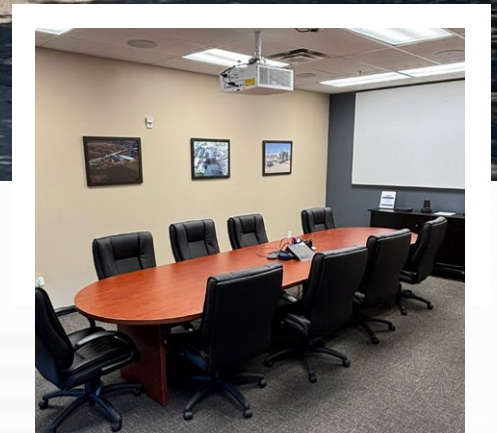


# 144 Windy Meadows

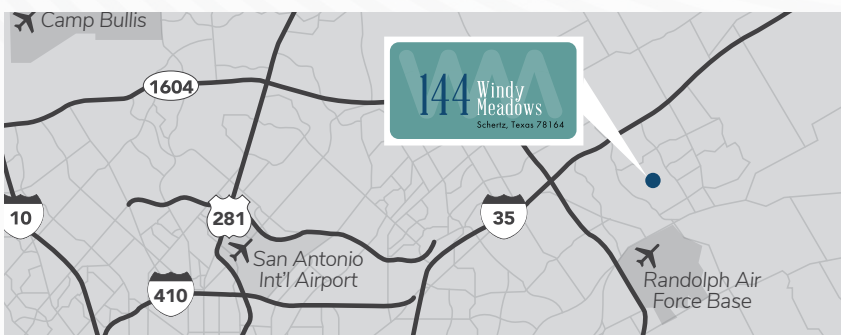
Schertz, Texas 78164

**14,960 SF**  
Office/Warehouse  
Available For Sale



## Highlights

- 14,960 SF office/warehouse
- Situated on 2 acres
- Fenced and improved lot
- 12' - 16' clear
- Two 12' grade level doors
- One 10' grade level door
- General Business Zoning (Industrial)



**STREAM**

Andrew Katzfey | Vice President  
210.298.8537 | andrew.katzfey@streamrealty.com

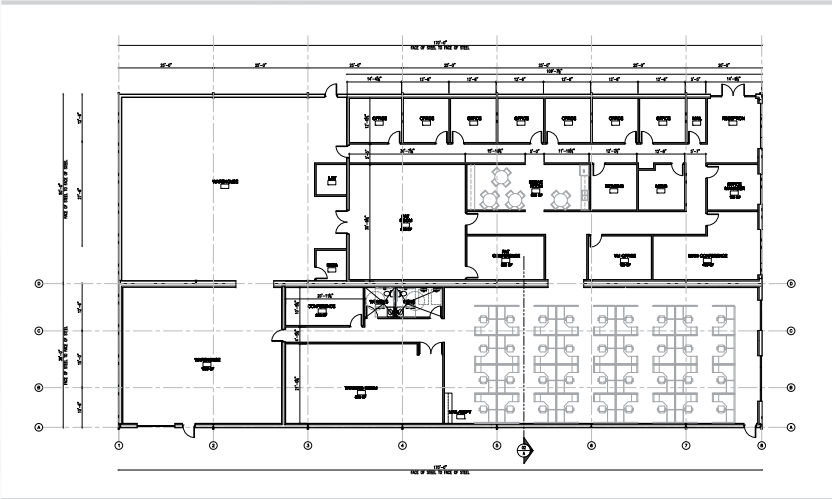
**savills**

Eric Crutchfield | Vice Chairman  
214.901.3336 | ecrutchfield@savills.us

# 144 Windy Meadows

Schertz, Texas 78164

**14,960 SF**  
Office/Warehouse  
Available For Sale

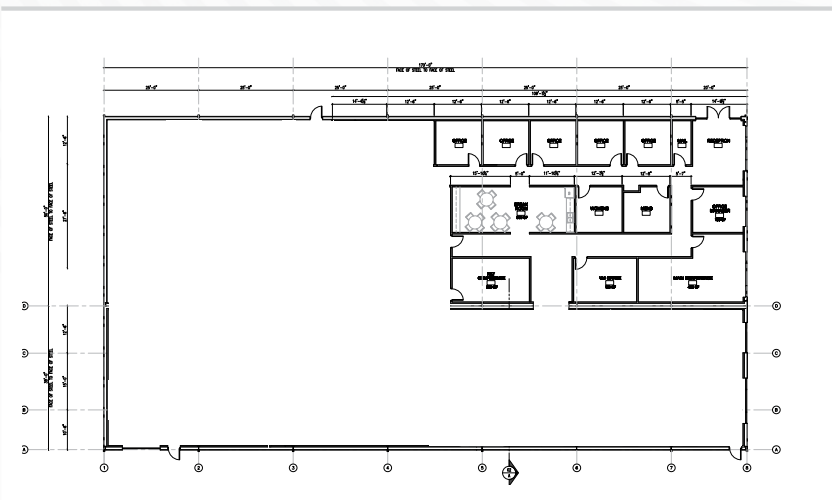


## Option 1: Available Floorplan

- **14,960 SF Total**
  - 10,960 SF Office
  - 4,500 SF Warehouse



Download  
Floorplan



## Option 2: Conceptual Plan For Demo

- **14,960 SF Total**
  - 10,960 SF Warehouse
  - 4,000 SF Office



Download  
Floorplan

**STREAM**

Andrew Katzfey | Vice President

210.298.8537 | andrew.katzfey@streamrealty.com

**savills**

Eric Crutchfield | Vice Chairman

214.901.3336 | ecrutchfield@savills.us

# 144 Windy Meadows

Schertz, Texas 78164

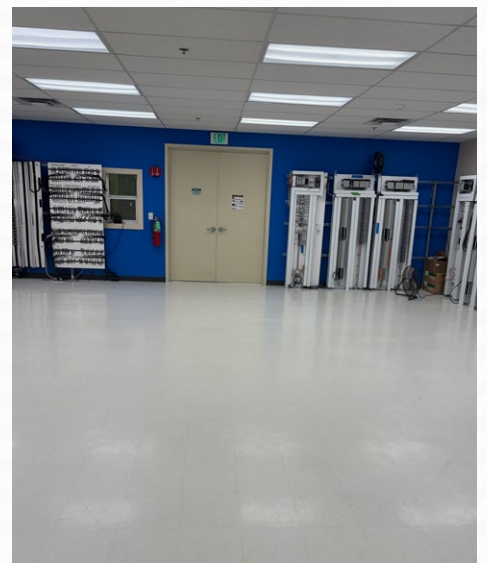
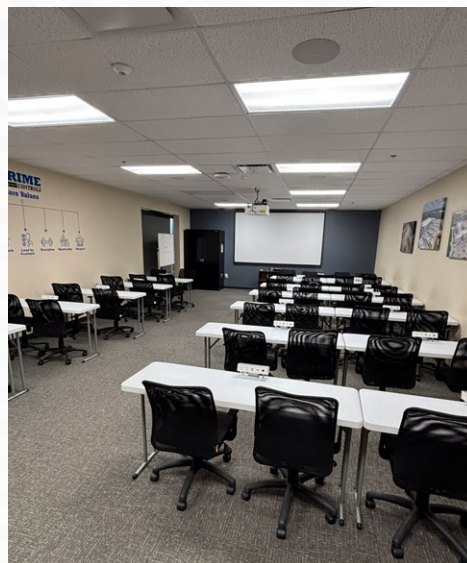
**14,960 SF**  
Office/Warehouse  
Available For Sale

## Site Aerial



### Drive Times

FM 78	4 Mins.
IH-35	6 Mins.
Randolph AFB	7 Mins.
Loop 1604	10 Mins.
IH-10	14 Mins.



**Andrew Katzfey | Vice President**  
210.298.8537 | andrew.katzfey@streamrealty.com



**Eric Crutchfield | Vice Chairman**  
214.901.3336 | ecrutchfield@savills.us

# 144 Windy Meadows

Schertz, Texas 78164



**Andrew Katzfey | Vice President**

210.298.8537 | [andrew.katzfey@streamrealty.com](mailto:andrew.katzfey@streamrealty.com)



**Eric Crutchfield | Vice Chairman**

214.901.3336 | [ecrutchfield@savills.us](mailto:ecrutchfield@savills.us)

Copyright © 2026 Stream Realty Partners, All rights reserved.

The information contained herein was obtained from sources believed reliable; however, Stream Realty Partners, L.P. make no guarantees, warranties, or representations as to the completeness or accuracy thereof. The presentation of this property is submitted subject to errors, change of price, or conditions, prior sale or lease, or withdrawal without notice.