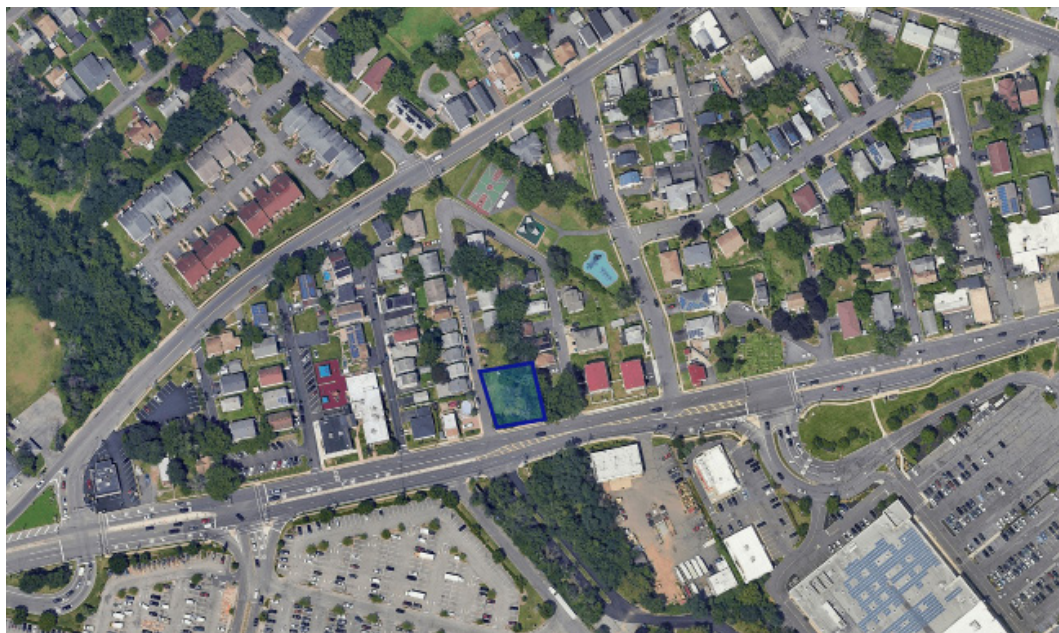




Vacant Land in Vauxhall, NJ

Springfield Avenue (NJS Route 124) & Roselyn Place Union, New Jersey 07088

Andrea Kyriacou
Senior Leasing Representative
akyriacou@rdmanagement.com
w. 212.265.6600 x390 c. 201.747.8608



Property Overview

Type

Vacant Land

GLA

8,654 square feet; 0.199 acres

Traffic

Two way average daily traffic
Springfield Avenue (NJS Route 124):
±11,000 cars per day
Vauxhall Road:
±28,000 cars per day

Area Retailers

Whole Foods, Best Buy, Home Depot,
Target, Mattress Firm, Dunkin

Vital Statistics

- Within minutes of Newark Liberty Int'l Airport & The Mall at Short Hills
- Union Township is home to Kean University which boasts a student population of over 16,000

Area Demographics



Population

1 Mile: 21,700
3 Mile: 191,700
5 Mile: 595,800



Daytime Population

1 Mile: 13,800
3 Mile: 116,610
5 Mile: 378,400



Median Age

1 Mile: 20-49
3 Mile: 20-49
5 Mile: 20-49



Number of HH

1 Mile: 7,500
3 Mile: 69,150
5 Mile: 219,400



Average HH Income

1 Mile: \$193,800
3 Mile: \$168,800
5 Mile: \$136,500



Median HH Income

1 Mile: \$150,500
3 Mile: \$122,500
5 Mile: \$98,200



Vacant Land Union (Vauxhall), New Jersey

Information furnished is from sources deemed reliable, but is not guaranteed by RD Management and is subject to change in price, corrections, errors and omissions, prior sales or withdrawal without notice.

