

2855 Marconi Drive
Alpharetta, GA 30005

MARCONI

FOREST 300



10K–30K SF Available for Lease

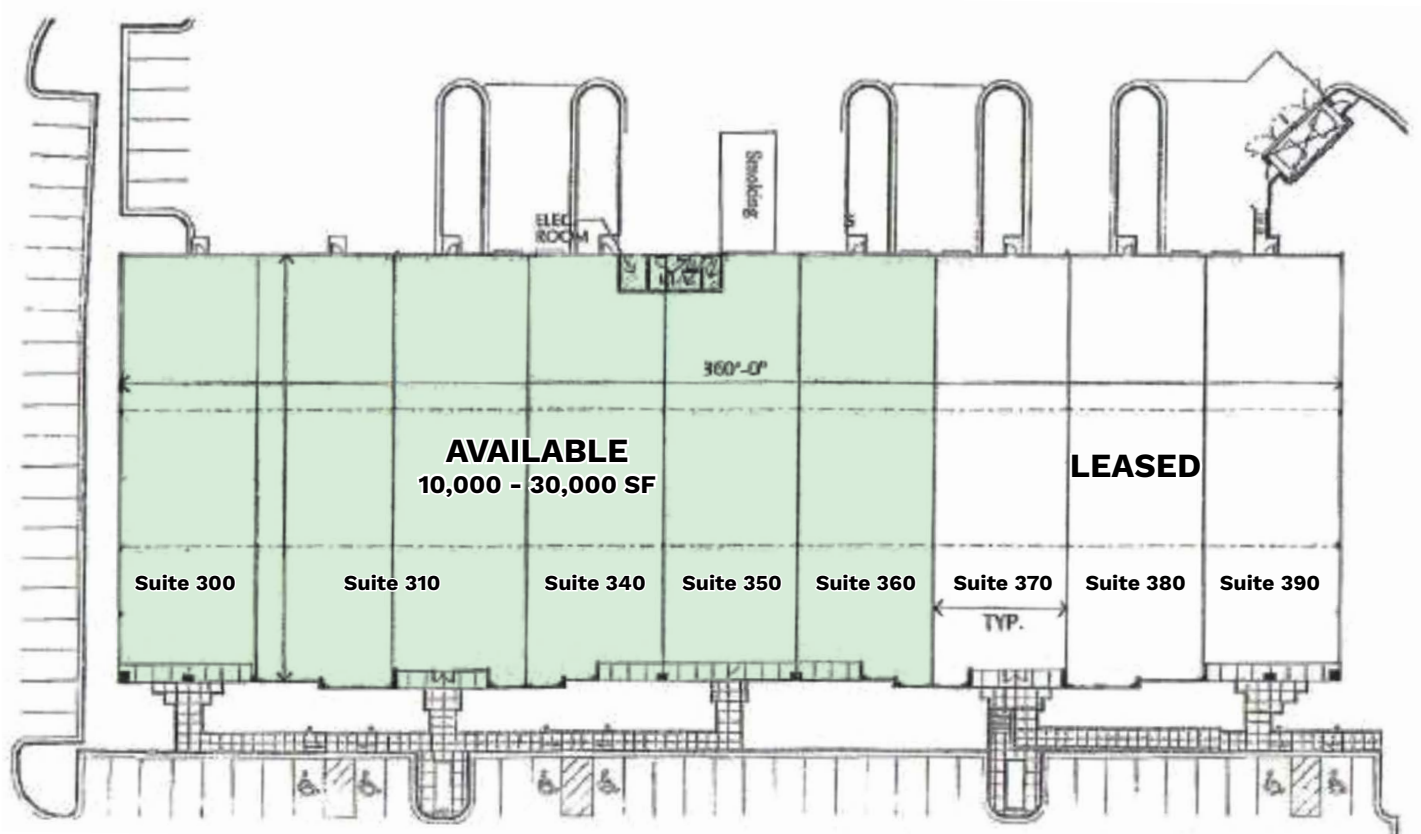
For more information:

MIKE BERENS 404 812 4024 / mberens@naibg.com

LOGAN HANER 404 812 4096 / lhane@naibg.com

NAI BrannenGoddard

Information is deemed from reliable sources.
No warranty is made as to its accuracy.



MARCONI FOREST 2855 Marconi Drive, Suites 300-360 Alpharetta, GA 30005

FLEX BUILDING

10K-30K SF AVAILABLE FOR LEASE

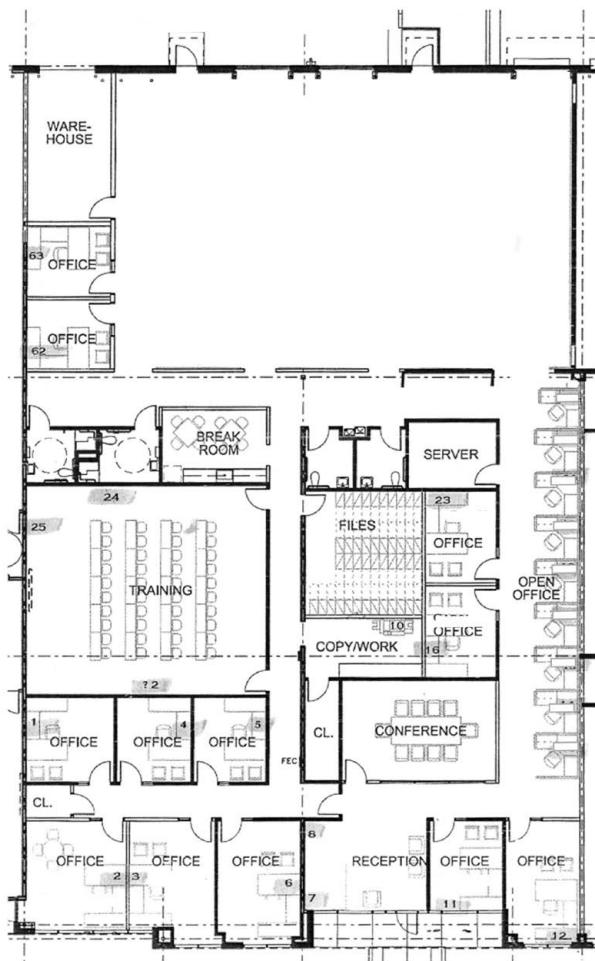
FORMER JEKYLL BREWING LOCATION

RATE: \$15.00/SF NNN

IMMEDIATE ACCESSIBILITY TO
WINDWARD PARKWAY / GA 400

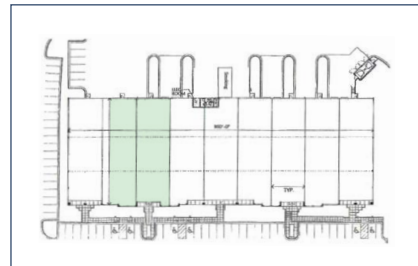
DIRECT ACCESS TO BIG CREEK GREENWAY





SUITE 310

KEY



MARCONI FOREST 2855 Marconi Drive, Suites 300-360 Alpharetta, GA 30005

FLEX BUILDING

SUITE 310

10,000 SF

RATE: \$15.00/SF NNN

IMMEDIATE ACCESSIBILITY TO
WINDWARD PARKWAY / GA 400

DIRECT ACCESS TO BIG CREEK GREENWAY

