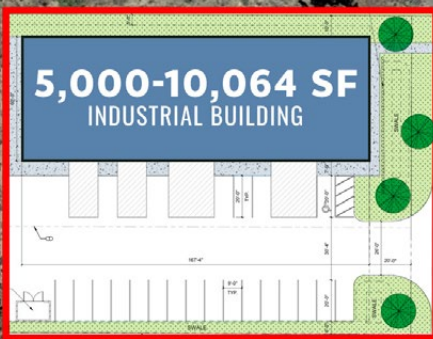


FOR LEASE

5,000-10,064 SF | \$1.00/SF/MO. NNN

New Industrial Building in Tom McCall Business Park

Page Ct., Prineville, OR 97754



PROPERTY DETAILS

- Bldg. Size:** 5,000-10,064 SF on the ground floor (plus 1,400 SF of bonus mezzanine)
- Lease Rate:** \$1.00/SF/Mo. NNN
- CAMs:** Est. at \$0.28/SF/Mo.
- Zoning:** Light Industrial (M1)
- Parking:** 23 onsite parking spaces
- Date Avail.:** November 2024

HIGHLIGHTS

- Clear span warehouse with three offices and two restrooms
- Steel building with masonry wainscoting
- 3 phase 200A power
- Two 18' wide x 14' high and two 14' wide x 14' high roll up doors
- Located near the Facebook and Apple data centers

Bruce Churchill, Principal Broker

600 SW Columbia St., Ste. 6100 | Bend, OR 97702

541.383.2444 | www.CompassCommercial.com

COMPASS
COMMERCIAL

REAL ESTATE SERVICES

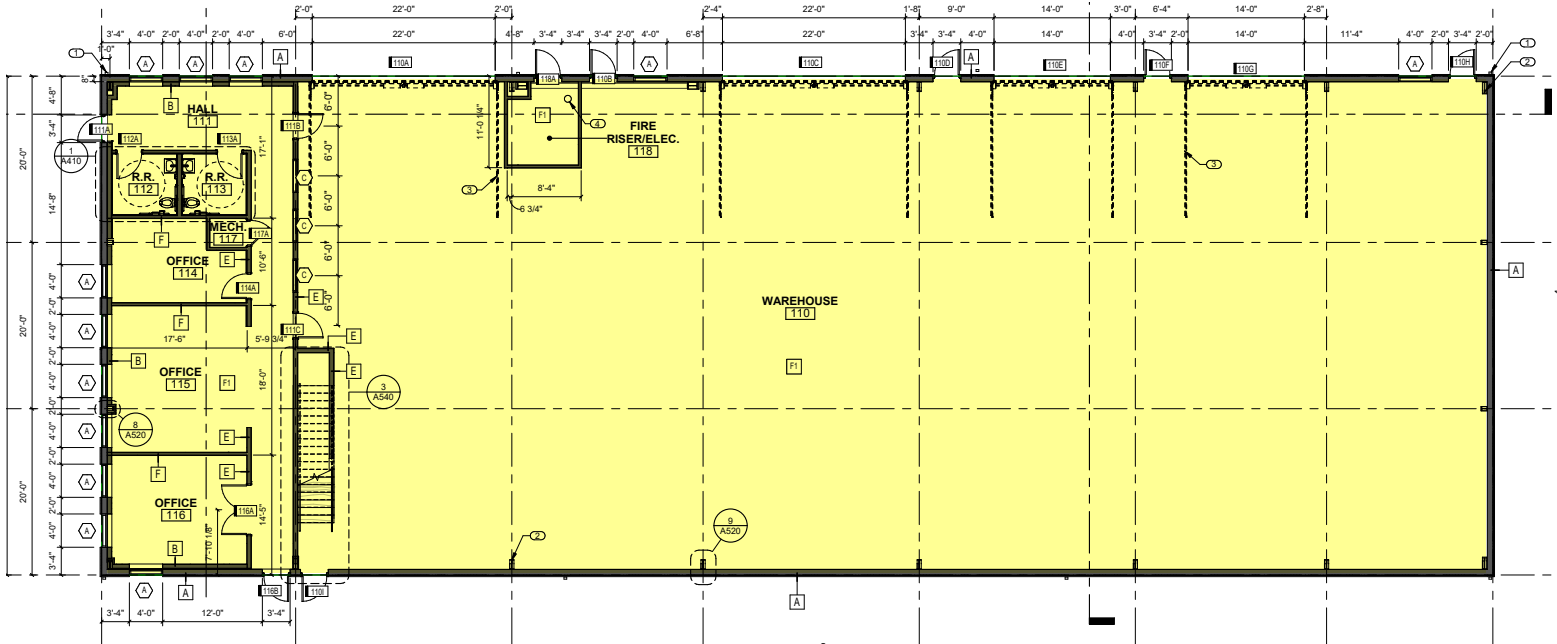
FOR LEASE

5,000-10,064 SF | \$1.00/SF/MO. NNN

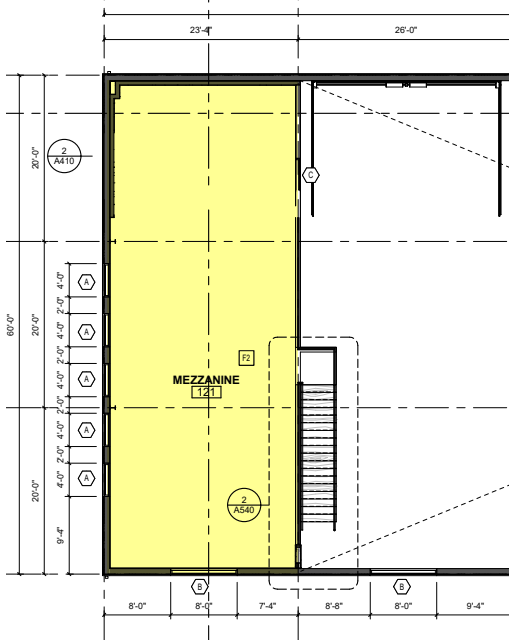
New Industrial Building in Tom McCall Business Park

Page Ct., Prineville, OR 97754

FIRST FLOOR PLAN



MEZZANINE FLOOR PLAN



Brokers are licensed in the state of Oregon. This information has been furnished from sources we deem reliable, but for which we assume no liability. This is an exclusive listing. The information contained herein is given in confidence with the understanding that all negotiations pertaining to this property be handled through Compass Commercial Real Estate Services. All measurements are approximate.



Bruce Churchill
Principal Broker
Cell 541.280.7560
bchurchill@compasscommercial.com

COMPASS
COMMERCIAL

REAL ESTATE
SERVICES