



Commerce Park Building 1

428 East Winchester Street
Murray, Utah 84107

For Lease

\$21.50 SF, Full Service

Derek Sawaya

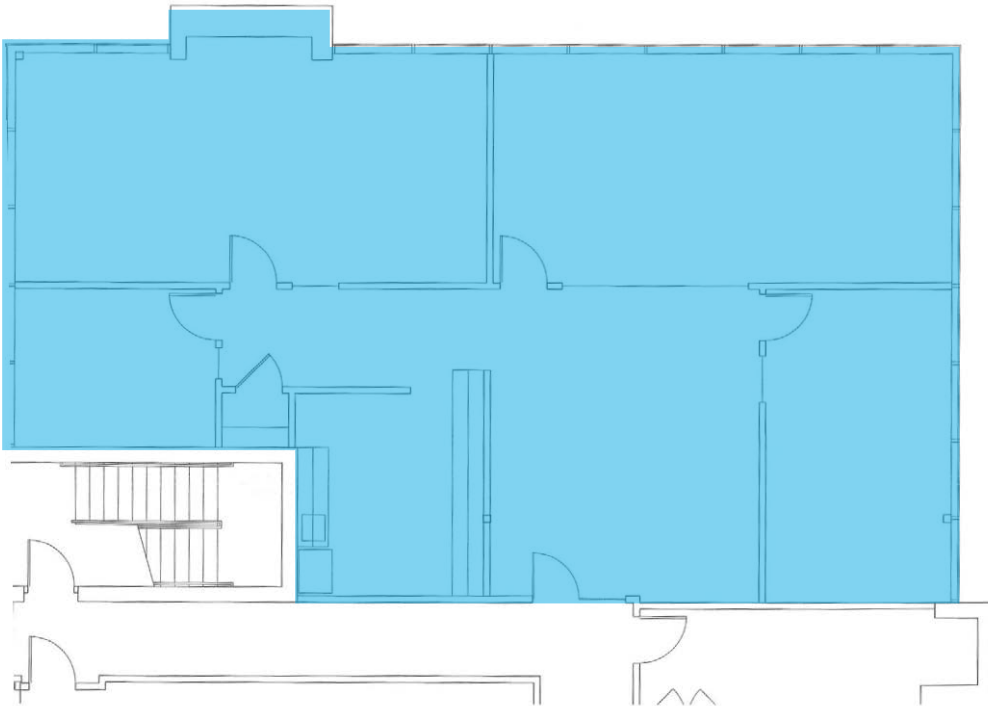
Associate Vice President
+1 801 947 8341
derek.sawaya@colliers.com

Property Information

- Available
 - Suite 135: 2,571 RSF
 - Suite 240: 1,298 RSF
- Two minutes from freeway access at I-215
- Four minutes from freeway access at I-15
- Walking distance to Fashion Place retail amenities
- Updated common areas
- Great east side location

428 E Winchester St | For Lease

Plans & Photos

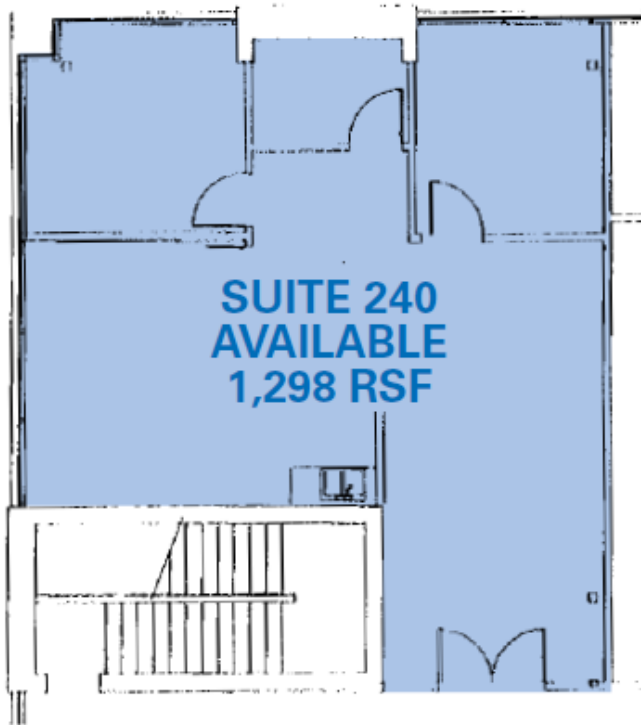


1st Floor


 **Suite 135**
2,571 RSF



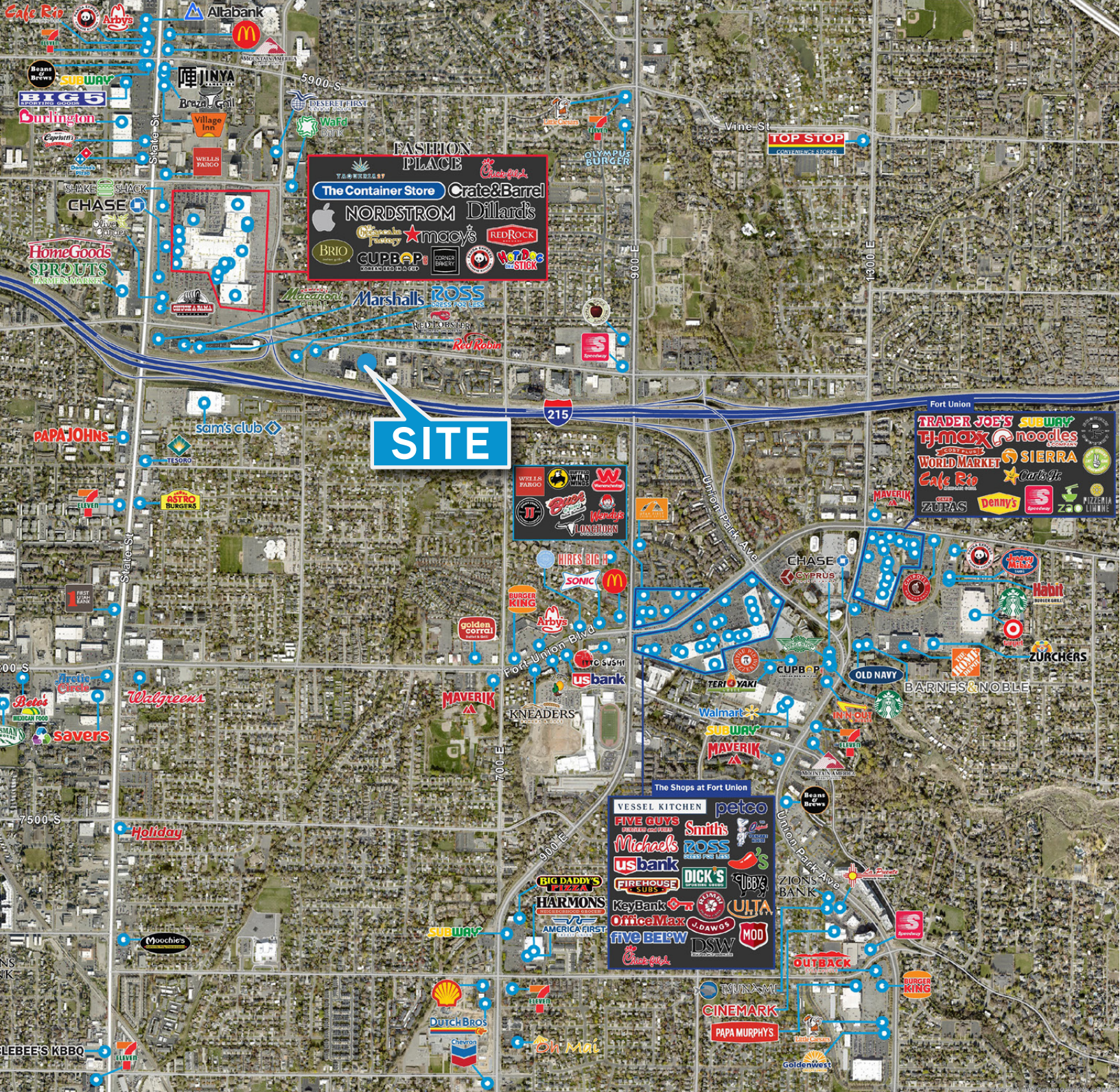
Plans & Photos



2nd Floor

 Suite 240
1,298 RSF





Colliers
 6440 S. Millrock Dr., Suite 500
 Salt Lake City, UT 84121
 Main: +1 801 947 8300
 colliers.com

Derek Sawaya
 Associate Vice President
 +1 801 947 8341
 derek.sawaya@colliers.com

This document has been prepared by Colliers International for advertising and general information only. Colliers International makes no guarantees, representations or warranties of any kind, expressed or implied, regarding the information including, but not limited to, warranties of content, accuracy and reliability. Any interested party should undertake their own inquiries as to the accuracy of the information. Colliers International excludes unequivocally all inferred or implied terms, conditions and warranties arising out of this document and excludes all liability for loss and damages arising therefrom. This publication is the copyrighted property of Colliers International and/or its licensor(s). ©2024. All rights reserved.