

DEER CREEK INDUSTRIAL PARK

10309 REGIS COURT, RANCHO CUCAMONGA



**Freestanding Industrial Building
±9,871 SF - FOR SALE & LEASE**

 JONESINDUSTRIALTEAM.COM

PLEASE CONTACT:



LEE & ASSOCIATES

KEN JONES, SIOR
Senior Vice President/Principal
kjones@lee-assoc.com
(909) 373-2726
DRE # 01703262

BEN PALITZ
Senior Associate
bpalitz@lee-assoc.com
(909) 373-2910
DRE # 02093182

COLE MCFETTERS
Associate
cmcfetters@lee-assoc.com
(909) 373-2733
DRE # 02203508

3535 Inland Empire Boulevard | Ontario, California 91764 | 909-989-7771 | lee-associates.com | Corporate DRE #: 00976995

All information furnished regarding property for sale, rental or financing is from sources deemed reliable, but no warranty or representation is made to the accuracy thereof and same is submitted to errors, omissions, change of price, rental or other conditions prior to sale, lease or financing or withdrawal without notice. No liability of any kind is to be imposed on the broker herein.

JONES
INDUSTRIAL TEAM

PROPERTY OVERVIEW

KEY HIGHLIGHTS



±9,871 SF
BUILDING SIZE



±1,347 SF
OFFICE SIZE



18'
MINIMUM CLEARANCE



2
GROUND LEVEL LOADING
DOORS



400 AMPS
(277/480V)- POWER (VERIFY)



LARGE
FULLY FENCED &
SECURED YARD

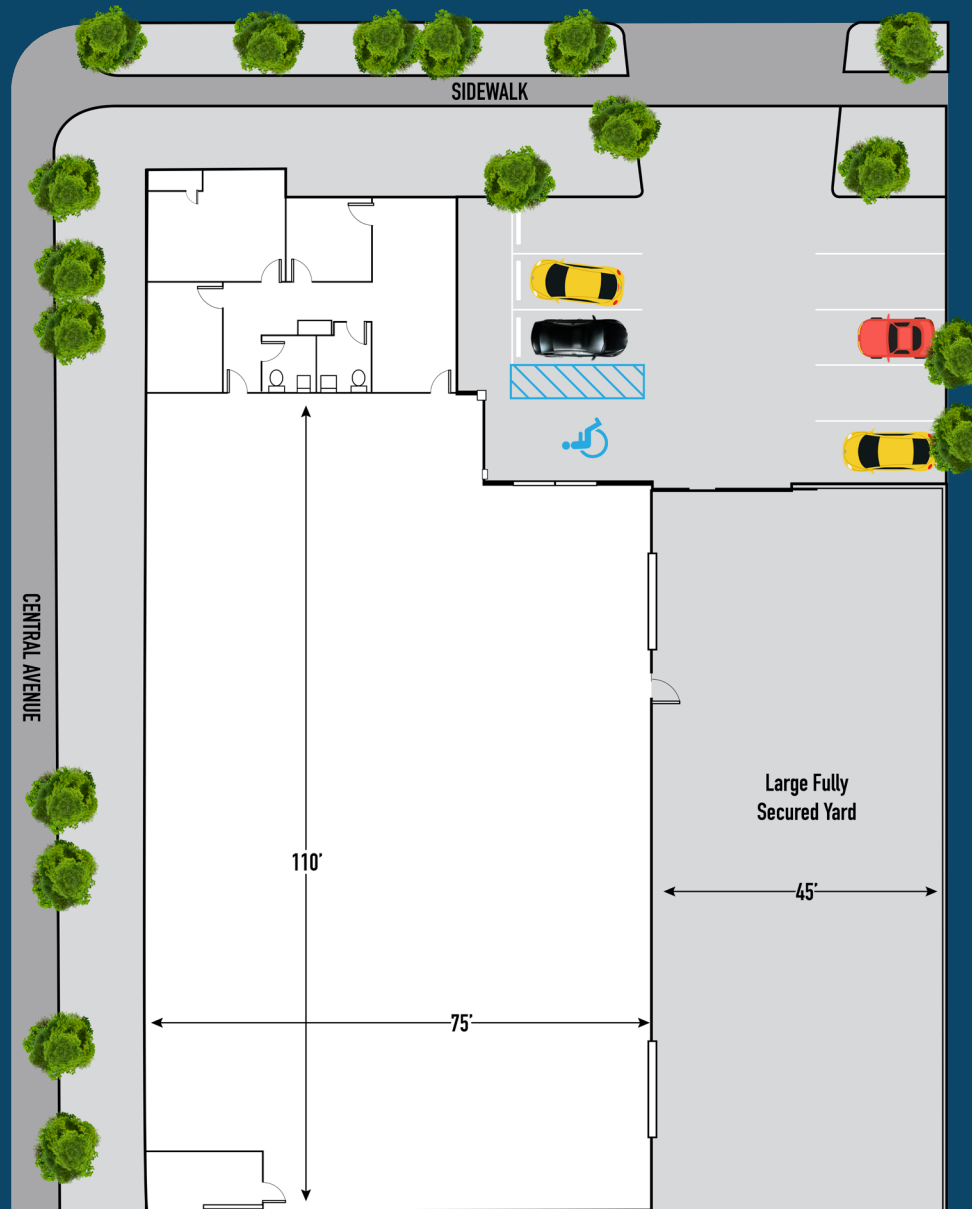
PROPERTY HIGHLIGHTS

- 16 AUTO PARKING STALLS
- FIRE SPRINKLERED (.20 GPM/1,500 SF) (VERIFY)
- ADDITIONAL STREET PARKING AVAILABLE
- IMMEDIATE ACCESS TO I-10 & I-15 FREEWAYS

MOVE IN READY- IMMEDIATE OCCUPANCY



SITE PLAN



LOCATION MAP

