



**FOR LEASE**

**2812, 2814, and 2822 Janitell Rd.  
Colorado Springs, CO 80906**

## PROPERTY SPECIFICATIONS

 **LOCATION:** 2814 and 2822 Janitell Rd.  
Colorado Springs, CO 80906

 **SPACE AVAILABLE:** 1,850 SF - 5,500 SF

2812 -2814	3,650 SF
2822	1,850 SF
<del>LEASED: 2842 A</del>	<del>1,800 SF</del>
<del>LEASED: 2842 B</del>	<del>1,850 SF</del>

 **LEASE RATE:** \$14.50 , NNN

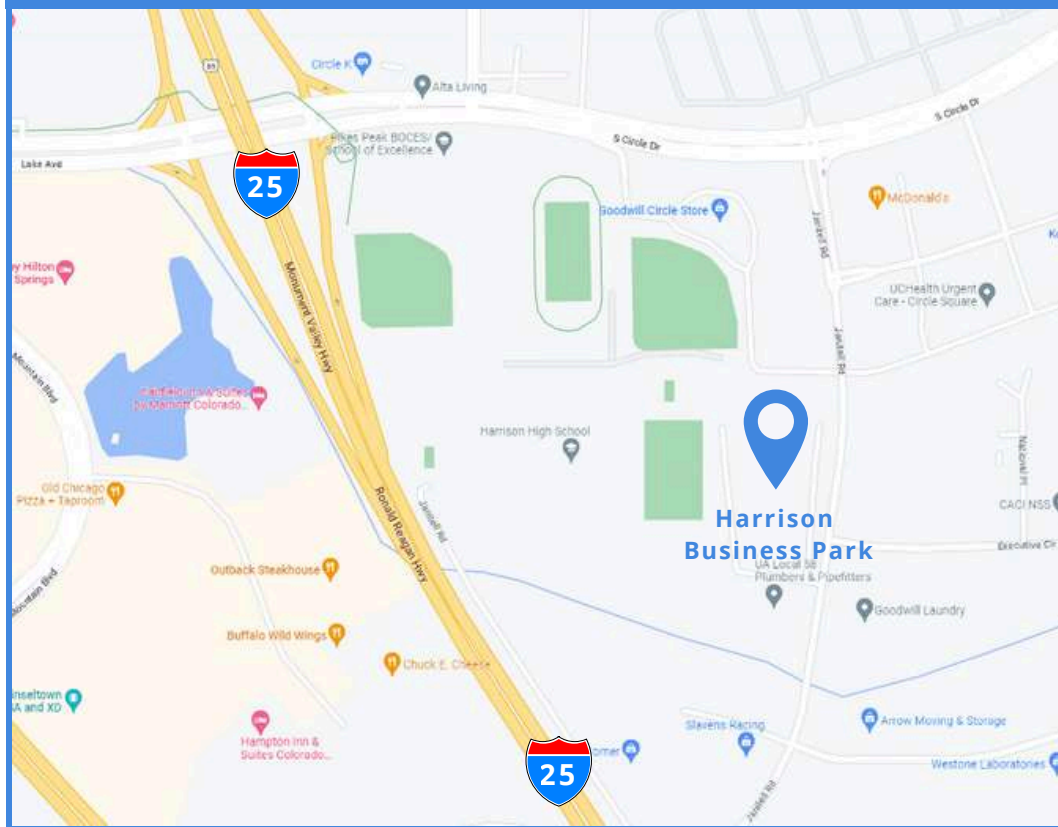
**NNN:** \$4.00

 **ZONING:** PIP 2

## ADDITIONAL INFORMATION:

- Can separate or combine suites
- Mostly warehouse space
- Drive In Door available
- New carpet, new paint, new LED lights
- 2822 - Drive In Door is 8' x 10'

## MAP



**JASON CASTRO**  
President



jason@peakcp.net  
719.227.9987



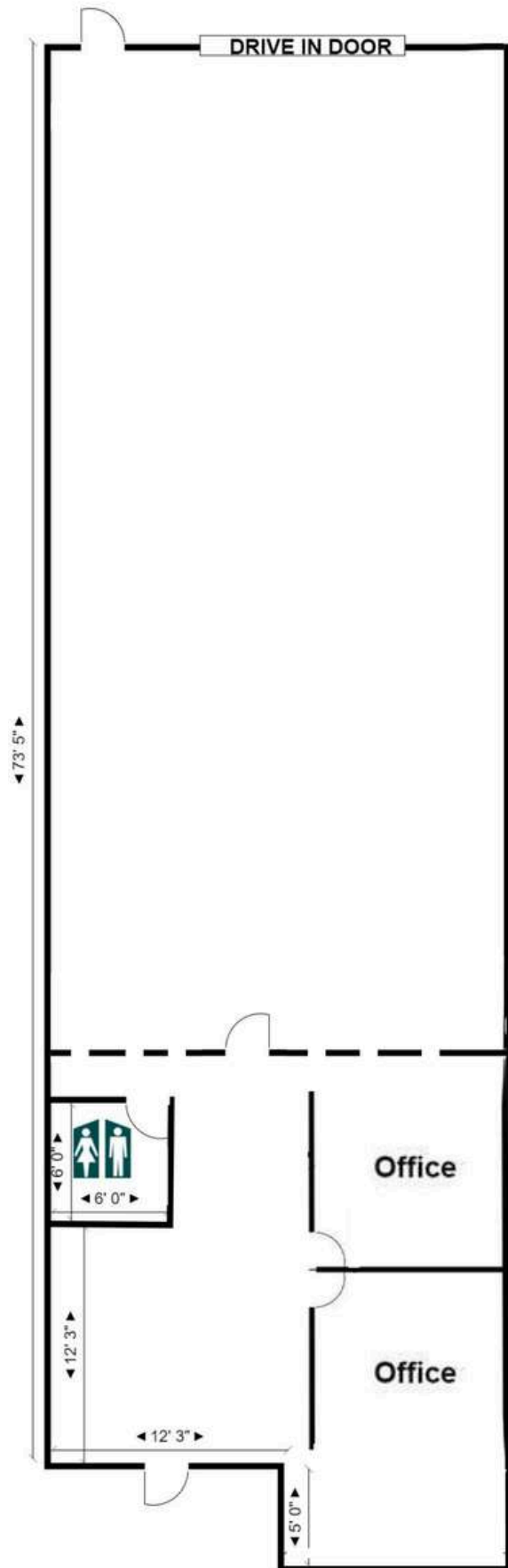
# FOR LEASE

2812, 2814, and 2822 Janitell Rd.  
Colorado Springs, CO 80906

## FLOOR PLAN

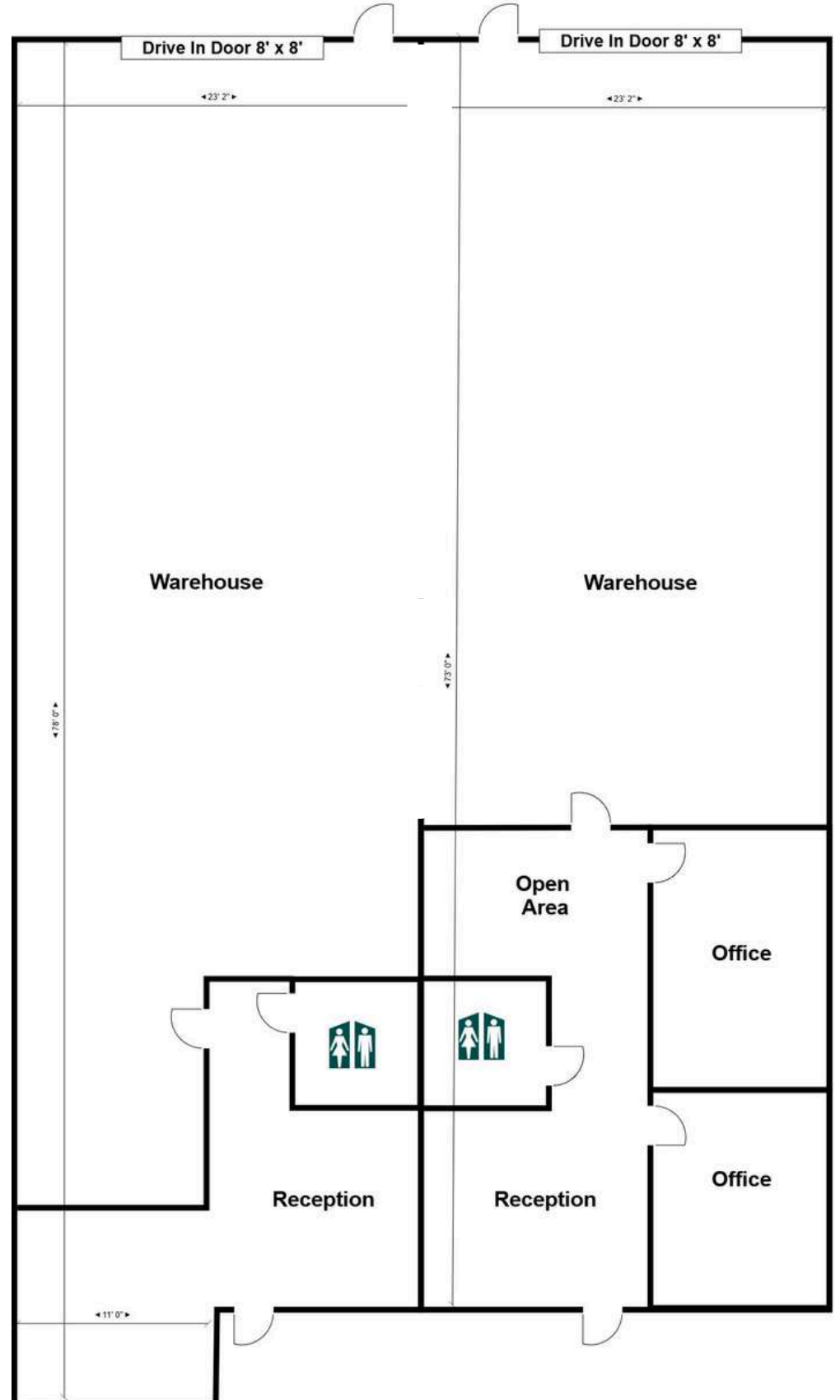
**2822**

1850 SF



**2812-2814**

3650 SF  
Concept (Combined)



The particulars, details and visuals shown herein are intended to give a general idea of the property. As such, they are not to be relied upon as statements of fact.



2727 N. Cascade Avenue,  
Suite 127, Colorado Springs, CO 80907

719.227.9987

[www.peakcp.net](http://www.peakcp.net)

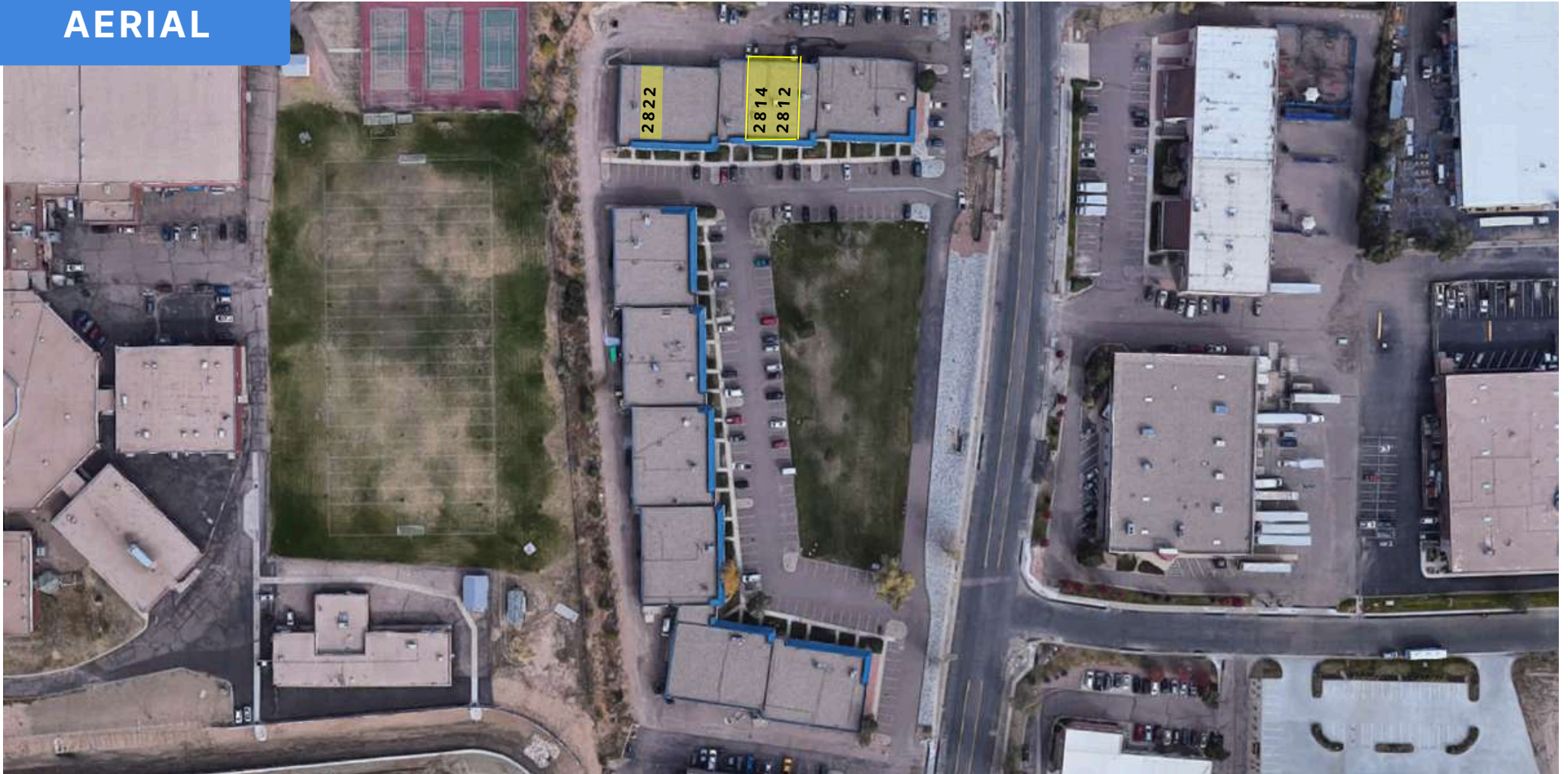
Peak Commercial Properties believes information contained herein, while not guaranteed, is from sources they believe reliable. Price, terms, and information are subject to change without notice.



FOR LEASE

2812, 2814, and 2822 Janitell Rd.  
Colorado Springs, CO 80906

AERIAL



The particulars, details and visuals shown herein are intended to give a general idea of the property. As such, they are not to be relied upon as statements of fact.



2727 N. Cascade Avenue,  
Suite 127, Colorado Springs, CO 80907

719.227.9987

[www.peakcp.net](http://www.peakcp.net)

Peak Commercial Properties believes information contained herein, while not guaranteed, is from sources they believe reliable. Price, terms, and information are subject to change without notice.