



NOW LEASING

THE ATRIUM BUILDING

123 S Wall St, Spokane, WA 99201

NEIGHBORHOOD

This vibrant multi-level building combines upscale dining, retail, and entertainment. The lower level offers two small retail spaces ideal for specialty shops with a focus on wine, whiskey, or cigars. Upstairs features a popular Italian restaurant, while the lower level hosts a members-only cigar lounge and a craft cocktail bar, creating a true destination for luxury and lifestyle.

AMENITIES

- ✓ Centrally Located
- ✓ Neighbors Include Europa, Late Arrival Club and June & Co. Bar
- ✓ Additional TI Allowance Available

Information is deemed reliable but not guaranteed. Broker not responsible for changes errors or commissions. All square footages are for conveniences only. All information should be verified prior to leasing or purchasing property.

RENTAL RATES

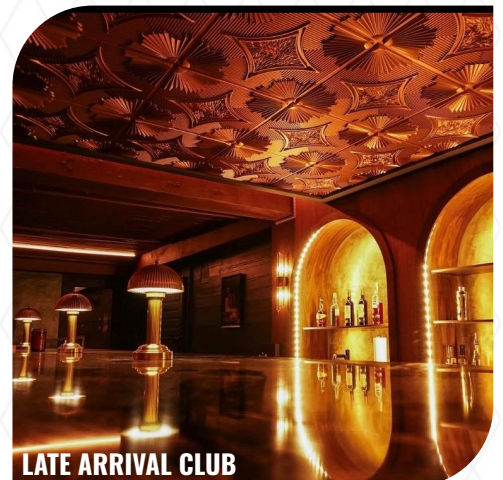
\$17/RSF

Modified Gross (Tenant to pay pro rata share of utilities)

SPACES AVAILABLE

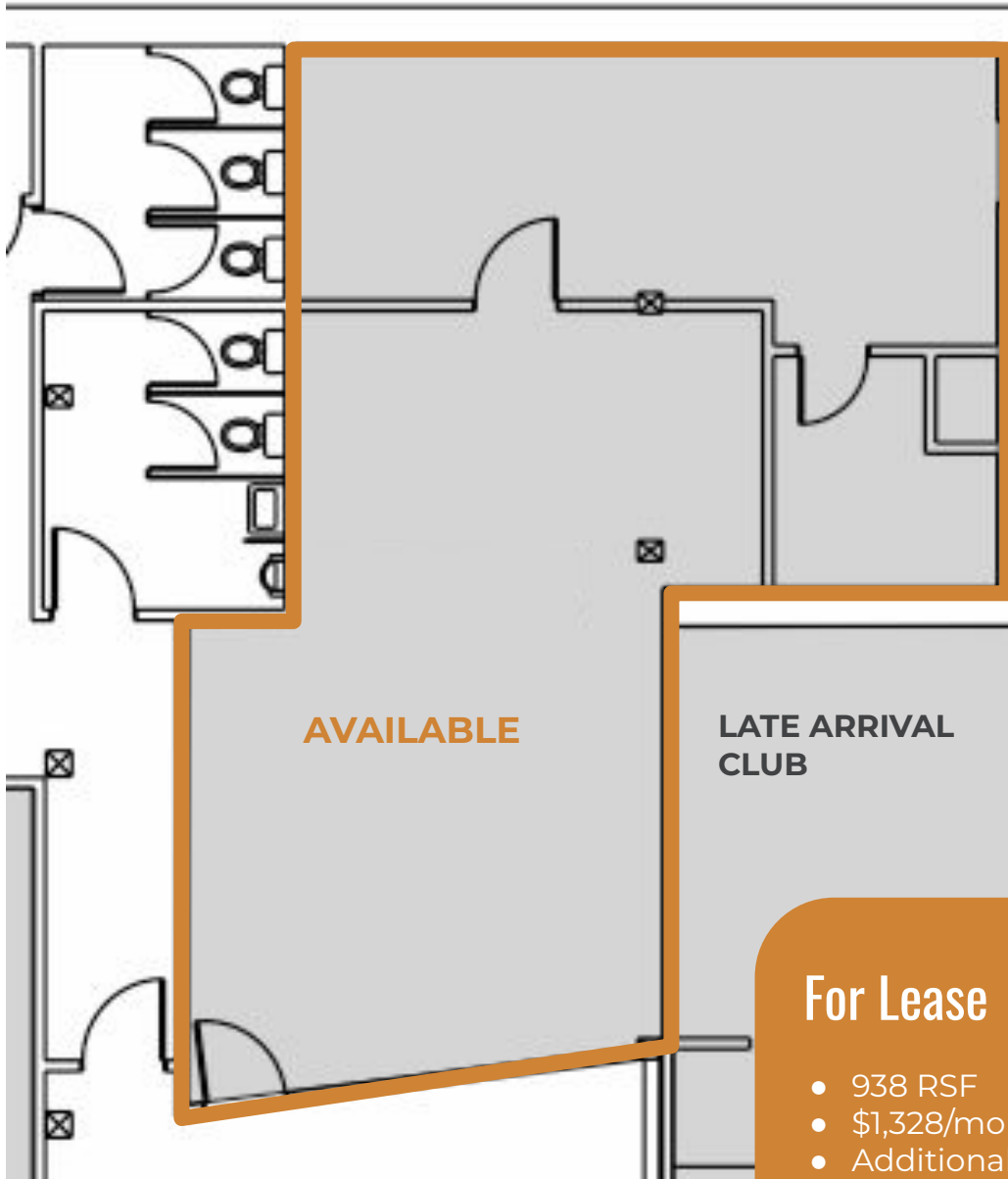
631 RSF

938 RSF



LATE ARRIVAL CLUB

FLOOR PLAN

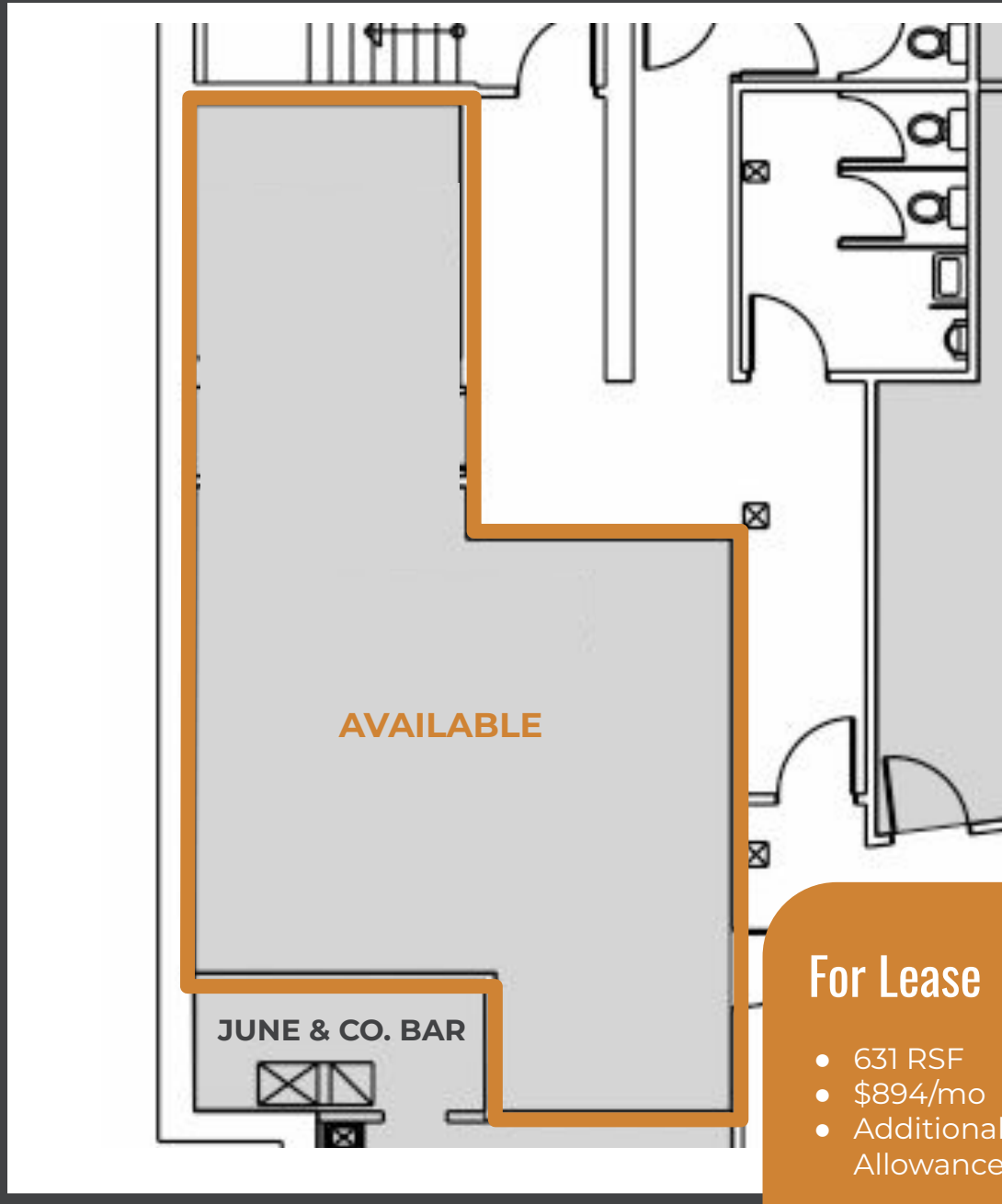


For Lease

- 938 RSF
- \$1,328/mo
- Additional TI Allowances Available

Information is deemed reliable but not guaranteed. Broker not responsible for changes errors or commissions. All square footages are for conveniences only. All information should be verified prior to leasing or purchasing property.

FLOOR PLAN



For Lease

- 631 RSF
- \$894/mo
- Additional TI Allowances Available

Information is deemed reliable but not guaranteed. Broker not responsible for changes errors or commissions. All square footages are for conveniences only. All information should be verified prior to leasing or purchasing property.

BUILDING PHOTOS



JUNE & CO.



LATE ARRIVAL CLUB



EUROPA

Information is deemed reliable but not guaranteed. Broker not responsible for changes errors or commissions. All square footages are for conveniences only. All information should be verified prior to leasing or purchasing property.