

1900 Carnegie Avenue, Unit A

Santa Ana, CA 92705

For Sublease $\pm 60,110$ s.f. Corporate Headquarters Facility



Property Features



±60,110 s.f. R&D/ industrial space



±15,563 s.f. of R&D/assembly on 1st floor



±8,200 s.f. of class 10,000 and 100,000 clean rooms on 1st floor



±15,968 s.f. of office area on the 2nd floor



One (1) ground level door



Two (2) dock high doors (truckwell)



±24' Minimum warehouse clearance



1,600 amps (277/480 v) power



Fire sprinkler system (.45 GPM/3,000 s.f.)



±3:1,000 Parking ratio



Excellent access to John Wayne Airport, 5, 55, 405 and 73 freeways



Close proximity to many retail amenities



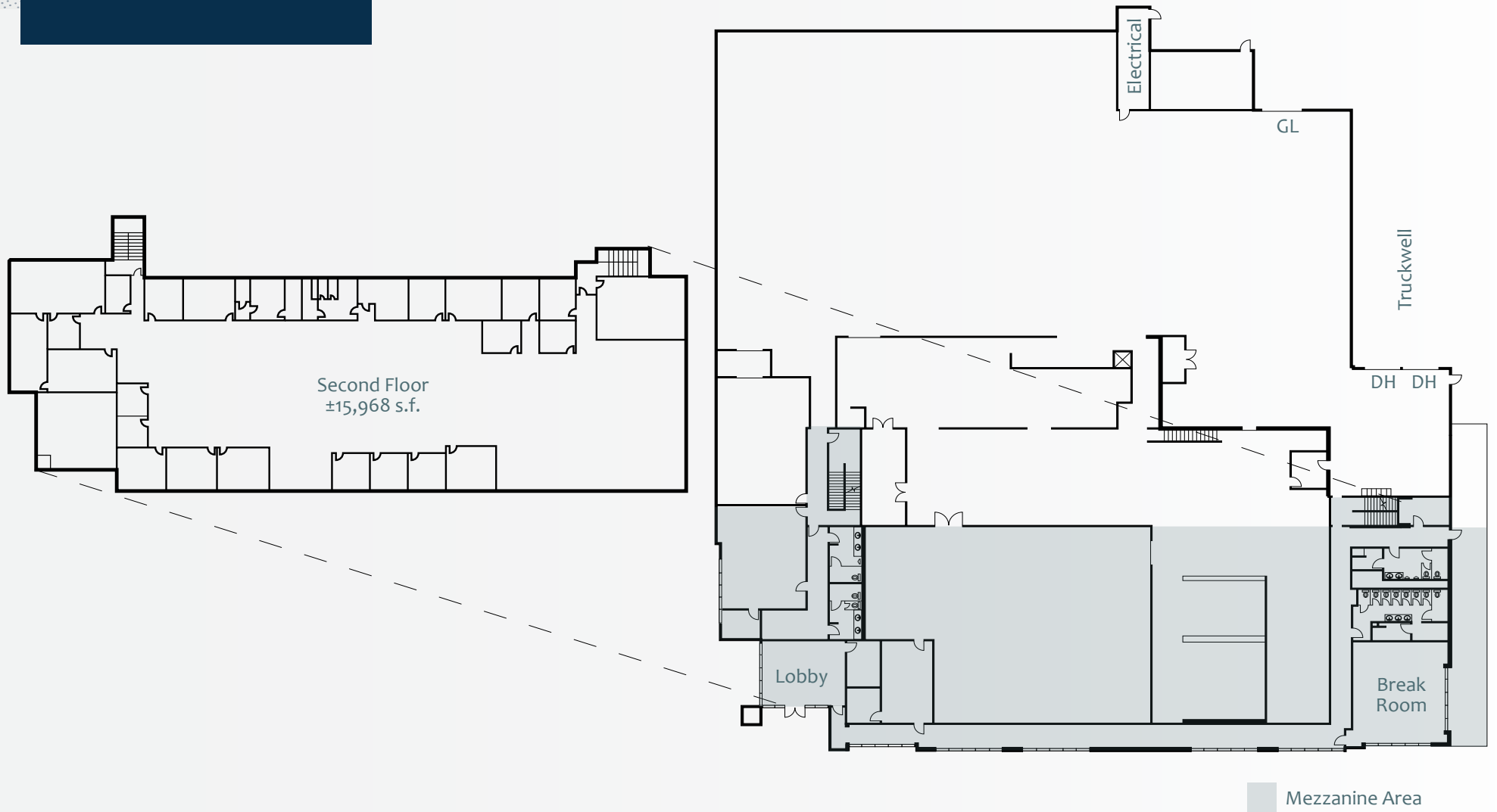
Sublease term through November 30, 2027



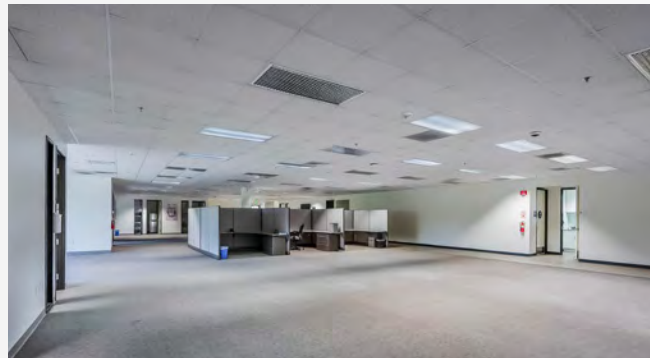
Site Plan



Floor Plan



Photos



1900 Carnegie Avenue, Unit A

Santa Ana, CA 92705



Contact Us

Byron Foss

Managing Director
+1 949 296 3615
byron.foss@jll.com
RE Lic. #01754265

Wade Tift

Managing Director
+1 949 296 3605
wade.tift@jll.com
RE Lic. #01274371

Nick Carey

Managing Director
+1 949 296 3626
nick.carey@jll.com
RE Lic. #01456650



Although information has been obtained from sources deemed reliable, neither Owner nor JLL makes any guarantees, warranties or representations, express or implied, as to the completeness or accuracy as to the information contained herein. Any projections, opinions, assumptions or estimates used are for example only. There may be differences between projected and actual results, and those differences may be material. The Property may be withdrawn without notice. Neither Owner nor JLL accepts any liability for any loss or damage suffered by any party resulting from reliance on this information. If the recipient of this information has signed a confidentiality agreement regarding this matter, this information is subject to the terms of that agreement. ©2025 Jones Lang LaSalle IP, Inc. All rights reserved.