

# 6005 E. Executive Dr.

FOR LEASE

16,300 SF

6005 E. Executive Dr.

Westland, MI 48185



## AVAILABLE:

16,300 SF

## USES:

Industrial, Manufacturing, or  
Warehouse.

## LEASE PRICE:

\$7.50/SF NNN

SALE POSSIBLE

## LOCATION:

Located on Executive Dr. off of Ford Rd  
and Newburgh Rd

## SUMMARY:

Very clean industrial building with  
heavy power, 3 overhead doors, and a  
truck well.

FOR LEASE



### Scott McGinnis

Associate Broker

734.444.7716 Mobile

734.855.7010 Office

[smcginnis@acresgroupmi.com](mailto:smcginnis@acresgroupmi.com)

### Matthew McGinnis

Associate Broker

734.556.0047 Mobile

734.855.7010 Office

[mmcginnis@acresgroupmi.com](mailto:mmcginnis@acresgroupmi.com)



## 16,300 SF For Lease

2



### YEAR BUILT:

Built 1986

### LOT SIZE:

1.02 Acres

### PROPERTY INFO:

- 16,300 Total SF
- 18 Ft Clear Height
- 3 Overhead doors
- 1 Truck well
- Heavy Power
- 1,000 Amps
- Possible Sale



### Scott McGinnis

Associate Broker

734.444.7716 Mobile

734.855.7010 Office

[smcginnis@acresgroupmi.com](mailto:smcginnis@acresgroupmi.com)

### Matthew McGinnis

Associate Broker

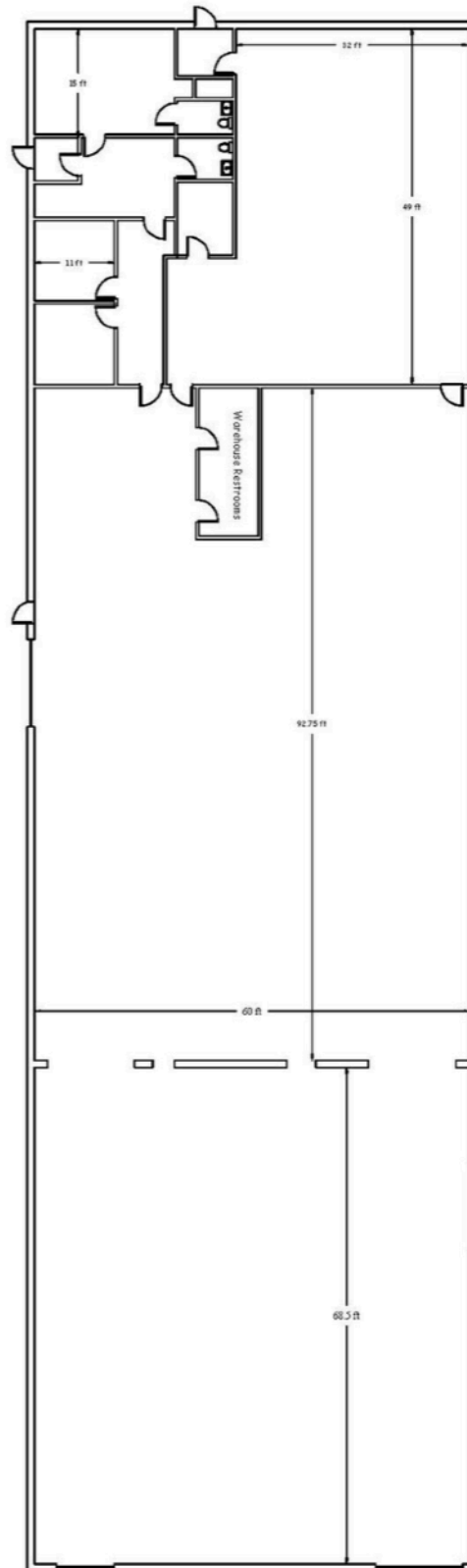
734.556.0047 Mobile

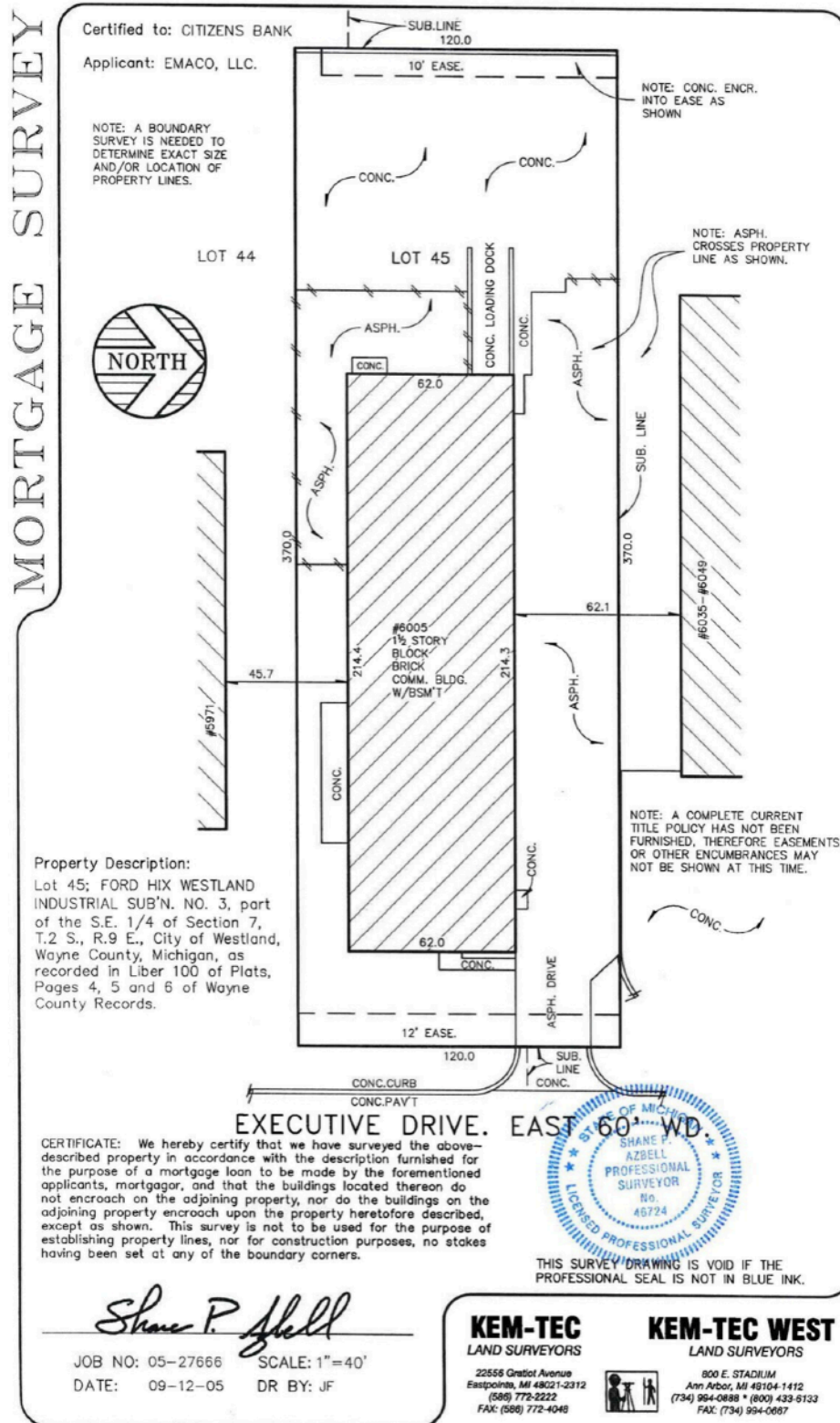
734.855.7010 Office

[mmcginnis@acresgroupmi.com](mailto:mmcginnis@acresgroupmi.com)

## Floor Plan

Total Area: 16,300 S.F.  
Warehouse: 10,300 S.F.  
Office: 6,000 on two levels



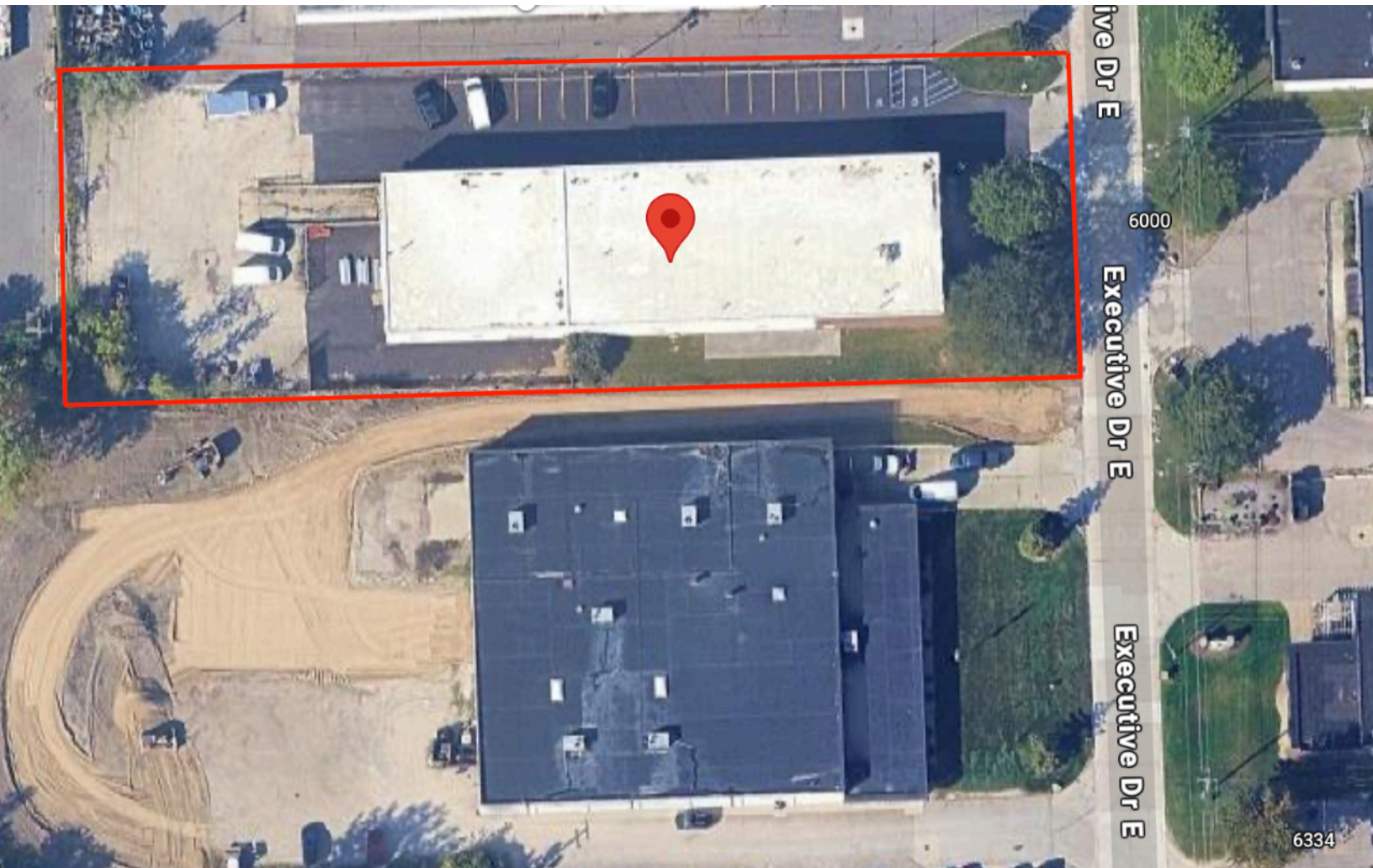




16,300 SF For Lease

5

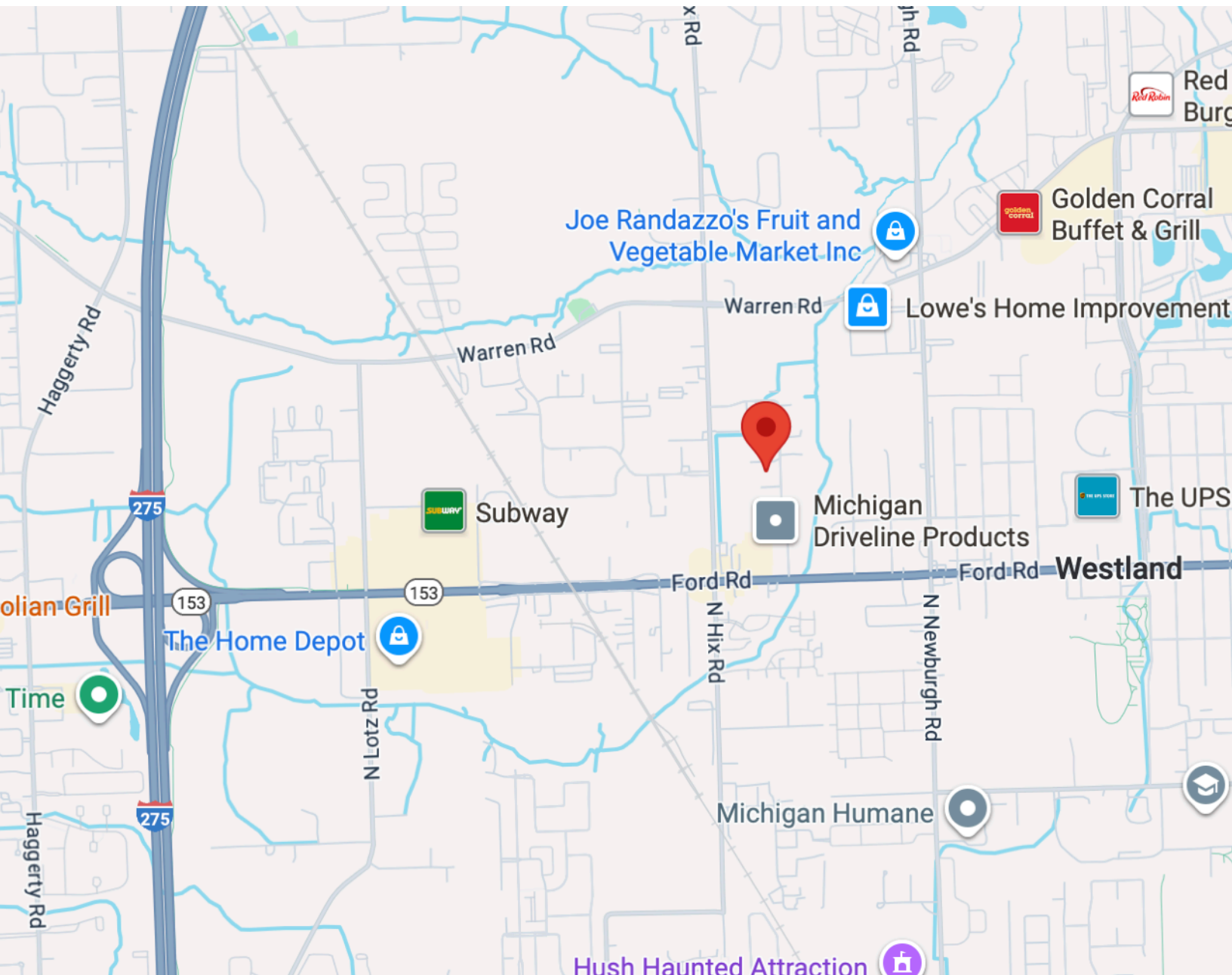
## AERIAL MAP



6,355 SF For Sale

6

## STREET MAP



**Scott McGinnis**  
Associate Broker  
734.444.7716 Mobile  
734.855.7010 Office  
[smcginnis@acresgroupmi.com](mailto:smcginnis@acresgroupmi.com)

**Matthew McGinnis**  
Associate Broker  
734.556.0047 Mobile  
734.855.7010 Office  
[mmcginnis@acresgroupmi.com](mailto:mmcginnis@acresgroupmi.com)