

Industrial Land for Lease

6± Acre Parking Lot

11530 NW Prairie View Road
Kansas City, Missouri

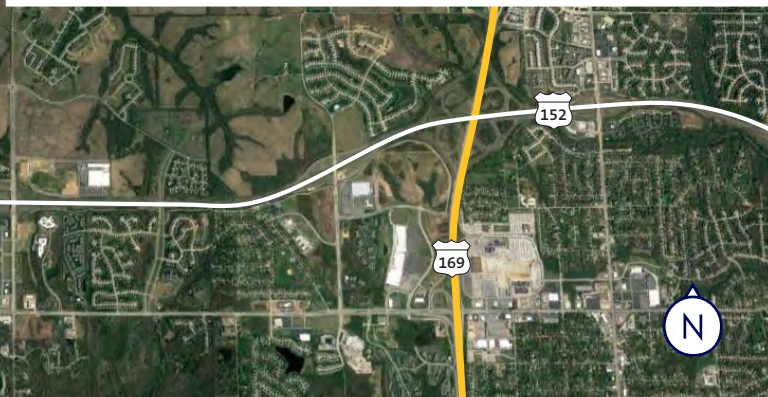
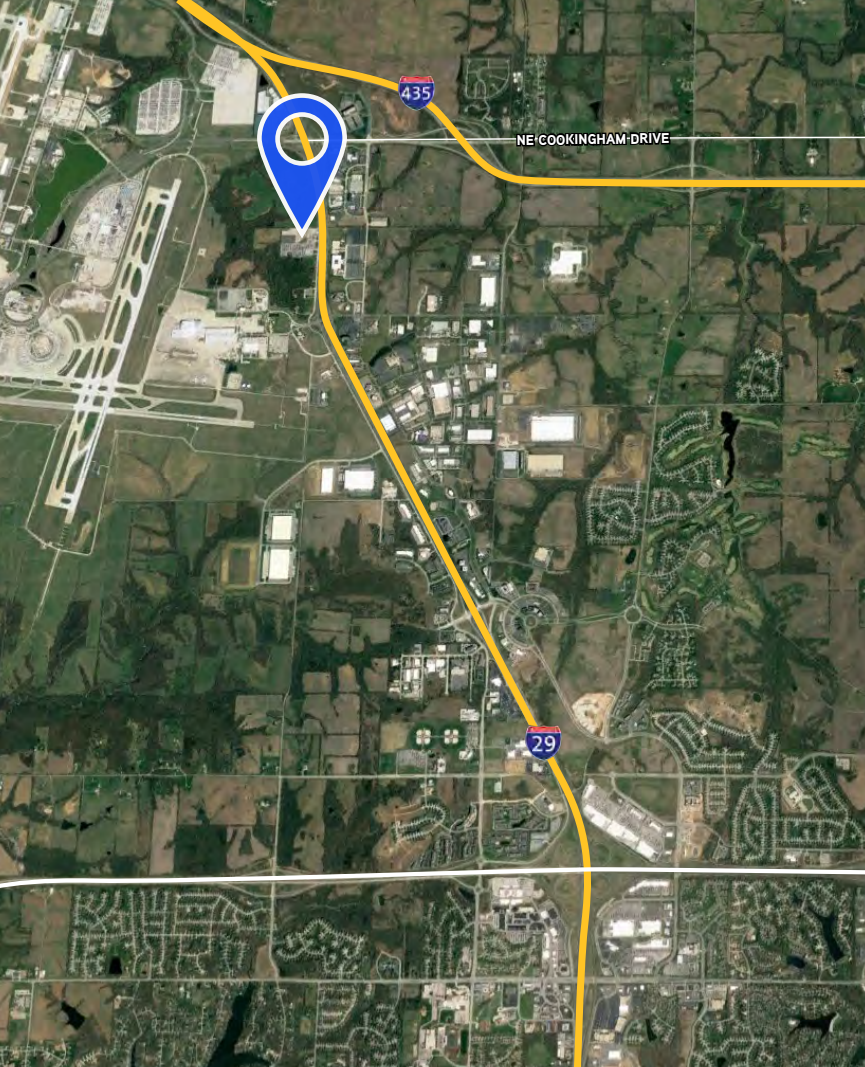


Doug Hedrick SIOR, CCIM
Senior Vice President
+1 816 556 1136
doug.hedrick@colliers.com

Pat Coppinger
Senior Vice President
+1 816 556 1110
pat.coppinger@colliers.com



Accelerating success.



Property Overview

- Total available: 6± acres (paved)
- Zoning: M1-2
- Excellent exposure from I-29
 - 50,948 VPD traffic count
- Lease rate: \$3,750 per acre per month, gross
- Potential purchase opportunity

11530 NW Prairie View Road | For Lease



Doug Hedrick SIOR, CCIM
Senior Vice President
+1 816 556 1136
doug.hedrick@colliers.com

Pat Coppinger
Senior Vice President
+1 816 556 1110
pat.coppinger@colliers.com

Colliers Kansas City
4900 Main Street, Suite 400
Kansas City, Missouri 64112
+1 816 531 5303
www.colliers.com/kansascity