

SUBLEASE

**RETAIL / FLEX
RESTAURANT
COMMERCIAL
KITCHEN**

**1520 SE 7th Ave
Portland, OR 97214**

**Commissary kitchen
with Type 1 hood
available for sublease
with possible
extension option,
partial or full space
available**

**Lower Hawthorne
2 blocks from SE Grand Ave**

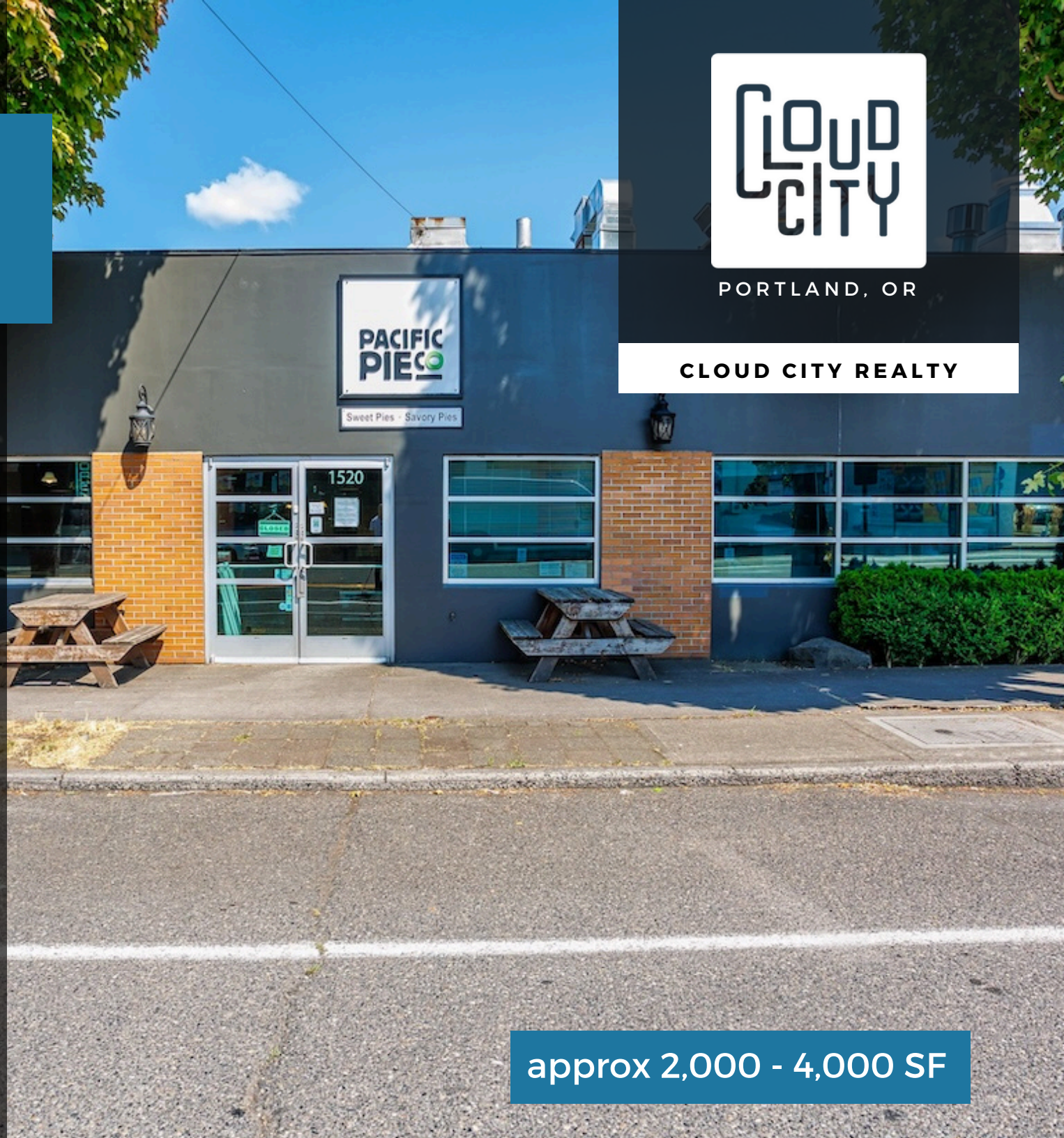


**Eli Haworth-Kaufka
Principal Broker
503-502-9403
eli@cloudcityrealty.com**



PORTLAND, OR

CLOUD CITY REALTY



approx 2,000 - 4,000 SF

BUILDING HIGHLIGHTS



- Type 1 hood
- Deli cases included
- Grease interceptor
- Large walk-in cooler and freezer
- Secondary food prep / storage area
- Break room and office
- 2 shared ADA restrooms
- Building-mounted lighted sign on SE 7th
- Fully ADA compliant

\$20/sf + Utilities
modified gross lease



BUILDING
HIGHLIGHTS



Cloud City Realty
5901 NE Shaver St
Portland, OR 97213
www.cloudcityrealty.com
971-339-1456



Cloud City Realty
5901 NE Shaver St
Portland, OR 97213
www.cloudcityrealty.com
971-339-1456



SE 7TH & HAWTHORNE