

For Sublease

Office Building

8,700 SF | \$10.00 SF/yr



Eye Surgery of Wichita Sublease

6100 E Central Avenue Suite 6
Wichita, Kansas 67208

Property Highlights

- Multiple Exam Rooms
- Three Operating Rooms
- Large Patient Waiting Area
- Recovery Lounge
- Door Side Parking
- Ample Plumbing
- Numerous Adjacent Dining Options

Property Description

2nd Generation Ambulatory Surgery Center, Near Normandie Shopping Center and Carriage Parkway Shopping Center, 8,700 Square Feet Available for Sublease through 1/31/2027

Area Medical Users include: Life Care Center of Wichita, Ascension Medical Group Physical Therapy, The Hand Center, Wichita Family Medicine Specialists, Wesley Pediatrics, Visiting Angels Homecare, Innovative Physical Therapy, Cat Hospital of Wichita

OFFERING SUMMARY

Available SF	8,700 SF
Lease Rate	\$10.00/SF Full Service Plus Electric
Building Size	18,000 SF

DEMOGRAPHICS

Stats	Population	Avg. HH Income
0.5 Miles	1,788	\$107,895
1 Mile	9,346	\$90,949
1.5 Miles	22,792	\$85,416

For more information

Patrick Ahern, SIOR, CCIM

O: 316 847 4914

pahern@naimartens.com

For Sublease

Office Building

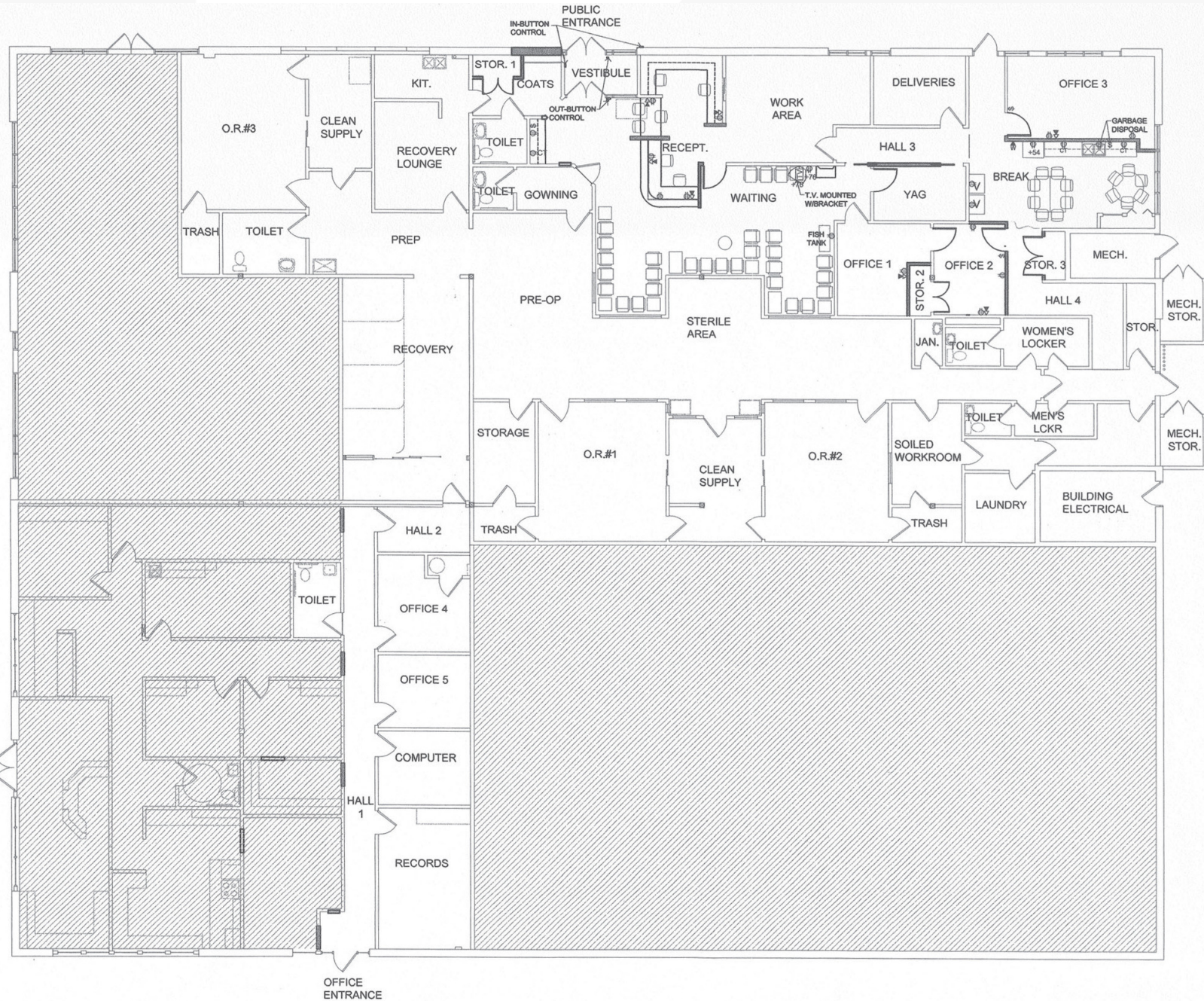
8,700 SF | \$10.00 SF/yr



For Lease

Office Building

8,700 SF | \$10.00 SF/yr



For Lease

Office Building

8,700 SF | \$10.00 SF/yr



Google

Map data ©2025 Imagery ©2025 Airbus, Maxar Technologies, Vexcel Imaging US, Inc.