

Office Property

199 Rosewood Drive

Danvers, MA 01923



NORDLUND
ASSOCIATES



Office Property

199 Rosewood Drive

Danvers, MA 01923

199 Rosewood Drive is situated within a corporate campus in Danvers, at a lit intersection on Rt.114, less than 1/2 mile from the juncture of Rt.1 and I-95. Professional Office setting with numerous amenities within the building and the park, as well as convenient access to restaurants, hotels and local amenities. Established ownership and management provide competitive lease terms and full service property management.

Chris Everest

ceverest@nordlundassociates.com
(978) 762-0500 x 101

Kevin Olson

kolson@nordlundassociates.com
(978) 762-0500 x 102

Jayson Rhuda

jrhuda@nordlundassociates.com
(978) 762-0500 x 105

www.NordlundAssociates.com

Nordlund Associates, Inc.

35 Village Road, Suite 301, Middleton, MA 01949

(978)-762-0500



**NORDLUND
ASSOCIATES**

Property Summary



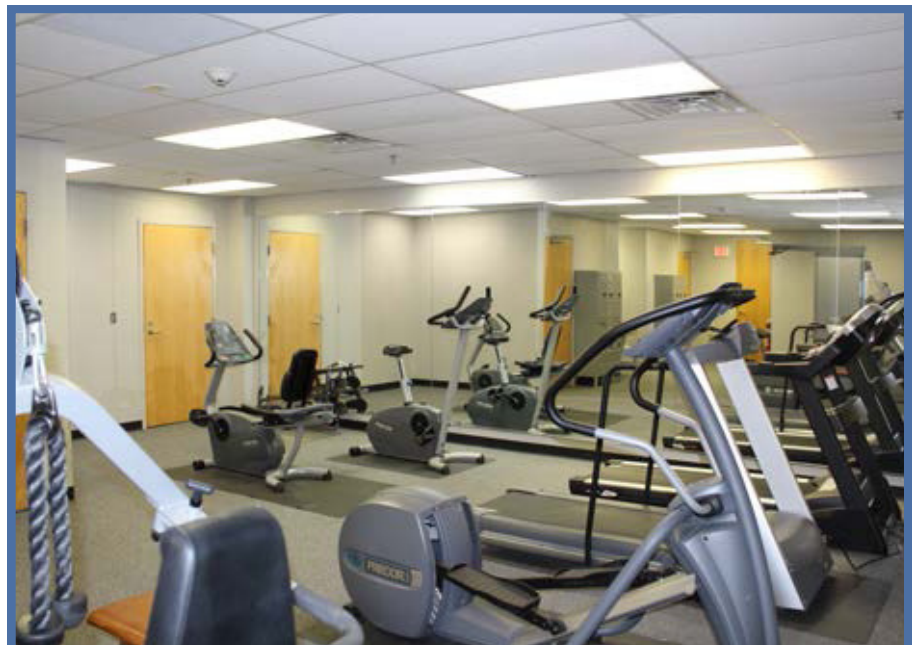
About The Property

199 Rosewood Drive is situated in a corporate campus. Accessible to I-95, and Route 1 and 114. This three (3) story building with ribbon windows recent improvements included a fitness center with showers, a lunch/ break area, and common upgrades.

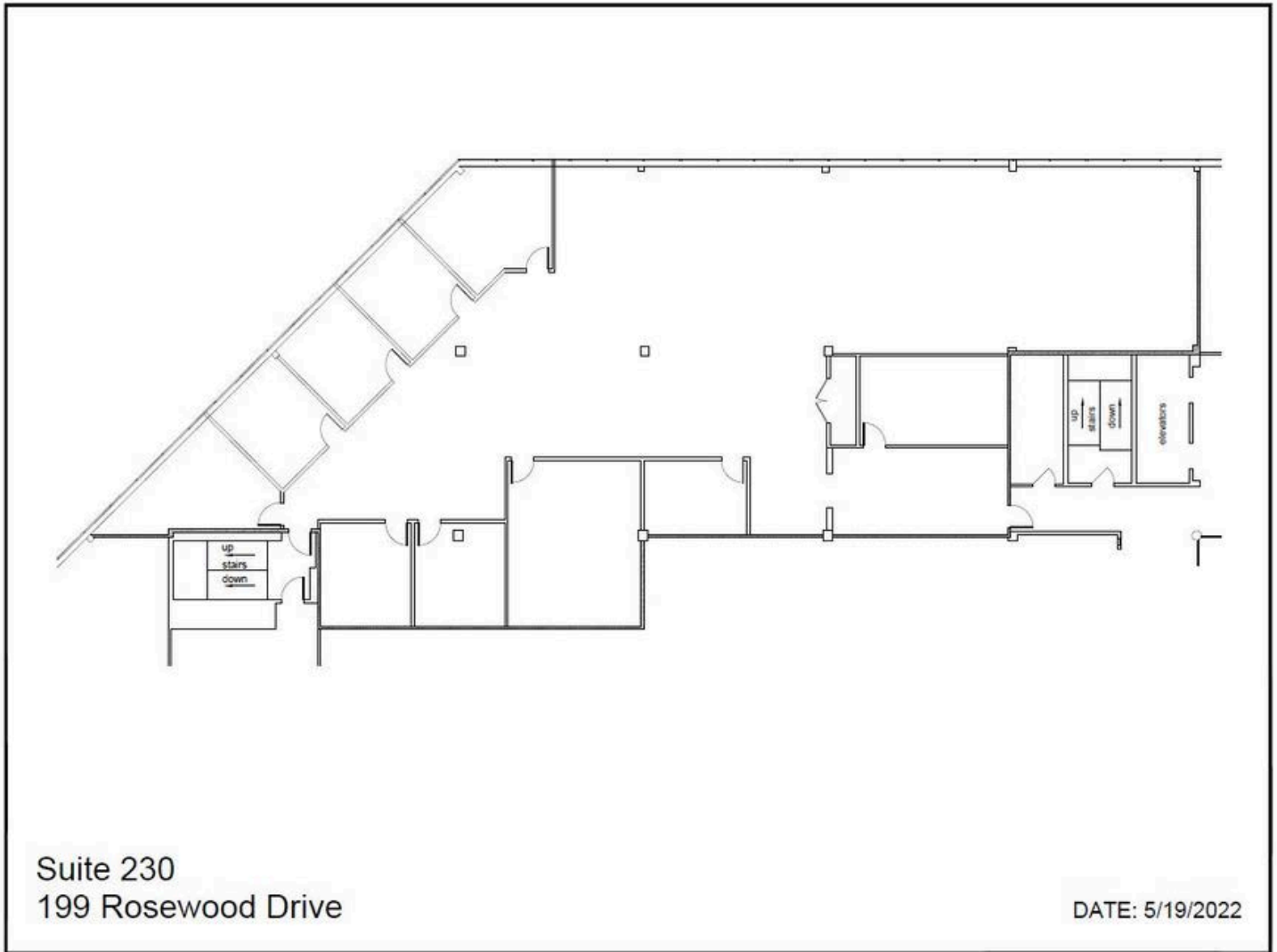
- Part of a four building complex totaling approximately 1/2 million SF
- Bridgewell Inc, Lahey Primary Care and Lahey Behavioral Health
- Asking \$18.50/SF Gross + Electricity
- Space built to suit

Features

Building Size:	116,287 SF
Suite 101:	1,040 SF
Suite 200:	4,339 SF
Suite 230:	3,156 - 7,618 SF
Suite 340:	1,524 SF



Sample Floor Plan



Suite 230
199 Rosewood Drive

DATE: 5/19/2022

FOR MORE INFORMATION

CHRIS EVEREST

CEVEREST@NORDLUNDASSOCIATES.COM

(978)-762-0500 x 101

KEVIN OLSON

KOLSON@NORDLUNDASSOCIATES.COM

(978)-762-0500 x 102

JAYSON RHUDA

JRHUDA@NORDLUNDASSOCIATES.COM

(978)-762-0500 x 105



NORDLUND
ASSOCIATES

The information above has been obtained from sources believed reliable. While we do not doubt its accuracy, we have not verified it and make no guarantee, warranty or representation about it. It is the responsibility of all parties interested to independently confirm its accuracy and completeness. All parties may solicit their own advisor (s) to conduct a careful, independent investigation of the property to determine to your satisfaction the suitability of the property for your needs.