



Keegan & Coppin
COMPANY, INC.

FOR LEASE

3581 WESTWIND BLVD
SANTA ROSA, CA

Modern Office/Industrial
Flex Space



Go beyond broker.

REPRESENTED BY:

DEMI BASILIADES, SREA
LIC # 02080190 (707) 664-1400, EXT 305
DBASILIADES@KEEGANCOPPIN.COM



EXECUTIVE SUMMARY



3581 WESTWIND BLVD
SANTA ROSA, CA

OFFICE/FLEX SPACE
FOR LEASE

PROPERTY INFORMATION

HIGHLIGHTS

- Minutes from Sonoma County Airport, SMART Train Station and 101 Corridor
- Property is Conveniently Located Next to the Airport Business Park
- Building Owned by The Sonoma County Farm Bureau
- Lots of On-Site Parking

AVAILABLE SPACE DESCRIPTION

SUITE 3581: 1,965+/- SF Approx. 1,965 SF remodeled office/flex space. Includes an open reception area, three (3) private offices, a large conference room, two (2) restrooms, a kitchenette, and an approx. 265 SF warehouse with roll-up door.

LEASE TERMS

RATE

\$1.35 PSF

TERMS

\$0.30 PSF NNN

Tenant responsible for separately metered electricity

ZONING

Industrial Park District

Keegan & Coppin Co., Inc.
1201 N McDowell Boulevard
Petaluma, CA 94954
www.keegancoppin.com
(707) 664-1400

The above information, while not guaranteed, has been secured from sources we believe to be reliable. Submitted subject to error, change or withdrawal. An interested party should verify the status of the property and the information herein.

REPRESENTED BY:

DEMI BASILIADES, SREA
LIC # 02093268 (707) 664-1400, EXT 305
DBASILIADES@KEEGANCOPPIN.COM



PHOTOS



3581 WESTWIND BLVD
SANTA ROSA, CA

OFFICE/FLEX SPACE
FOR LEASE



PRESENTED BY:

DEMI BASILIADES, SREA
LIC # 02080190 (707) 664-1400, EXT 305
RMAYER@KEEGANCOPPIN.COM

The above information, while not guaranteed, has been secured from sources we believe to be reliable. Submitted subject to error, change or withdrawal. An interested party should verify the status of the property and the information herein.

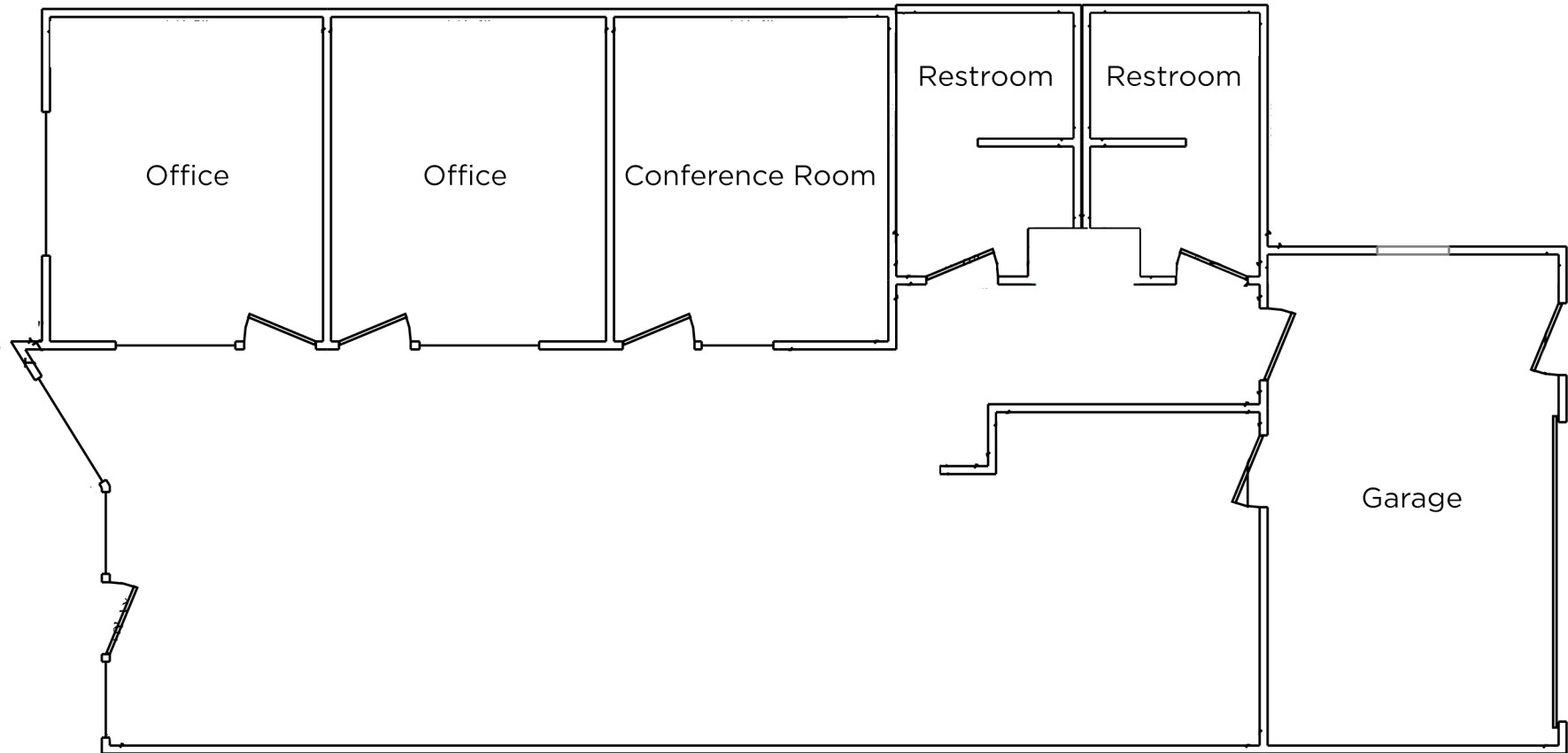


FLOOR PLAN



3581 WESTWIND BLVD
SANTA ROSA, CA

OFFICE/FLEX SPACE
FOR LEASE



PRESENTED BY:

DEMI BASILIADES, SREA
LIC # 02080190 (707) 664-1400, EXT 305
RMAYER@KEEGANCOPPIN.COM

The above information, while not guaranteed, has been secured from sources we believe to be reliable. Submitted subject to error, change or withdrawal. An interested party should verify the status of the property and the information herein. Map created using ArcGIS® software by Esri. ArcGIS® is the intellectual property of Esri and is used herein under license. Copyright © Esri.

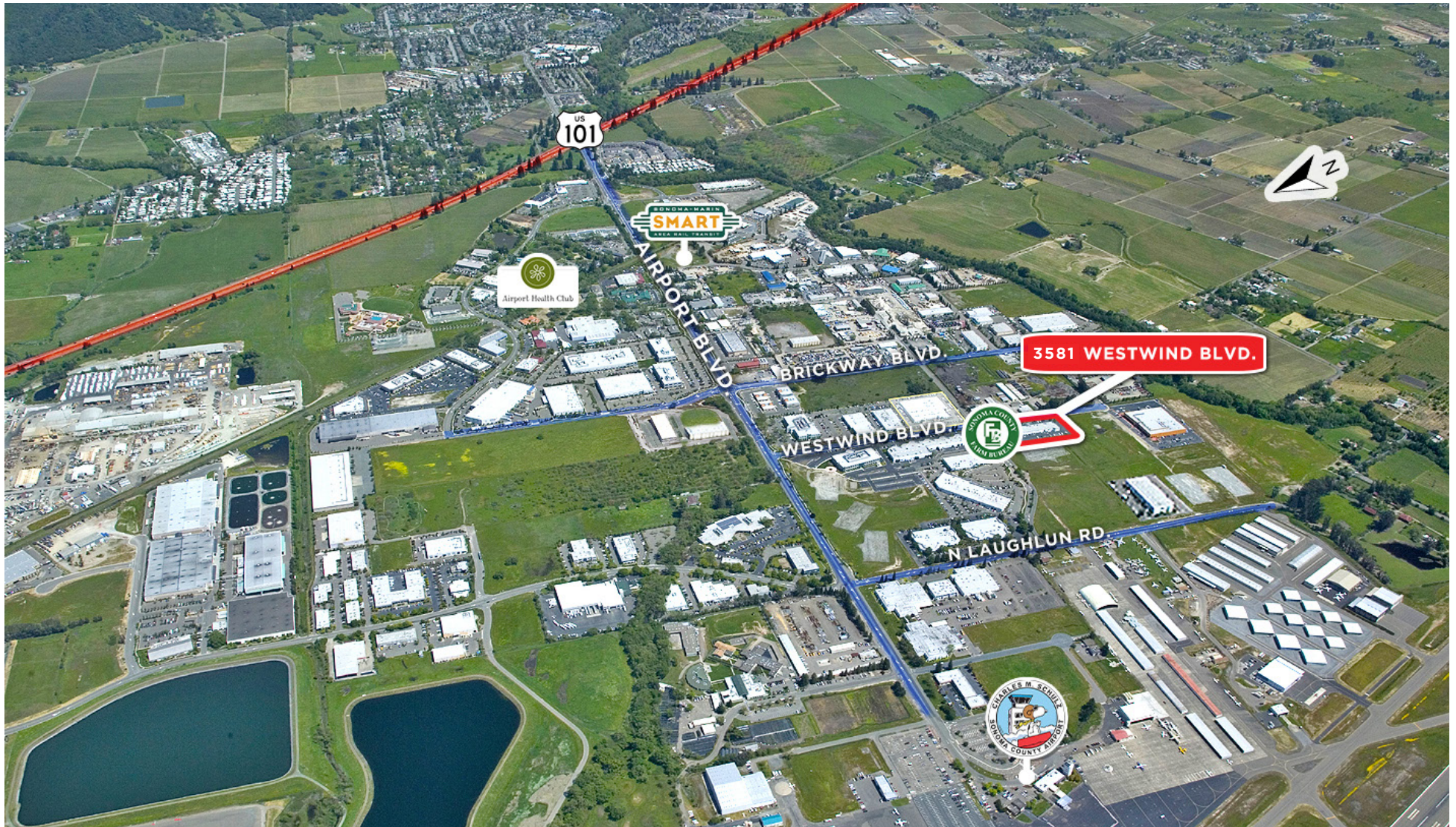


AERIAL MAP



3581 WESTWIND BLVD
SANTA ROSA, CA

OFFICE/FLEX SPACE
FOR LEASE



PRESENTED BY:

DEMI BASILIADES, SREA
LIC # 02080190 (707) 664-1400, EXT 305
RMAYER@KEEGANCOPPIN.COM

The above information, while not guaranteed, has been secured from sources we believe to be reliable. Submitted subject to error, change or withdrawal. An interested party should verify the status of the property and the information herein. Map created using ArcGIS® software by Esri. ArcGIS® is the intellectual property of Esri and is used herein under license. Copyright © Esri.