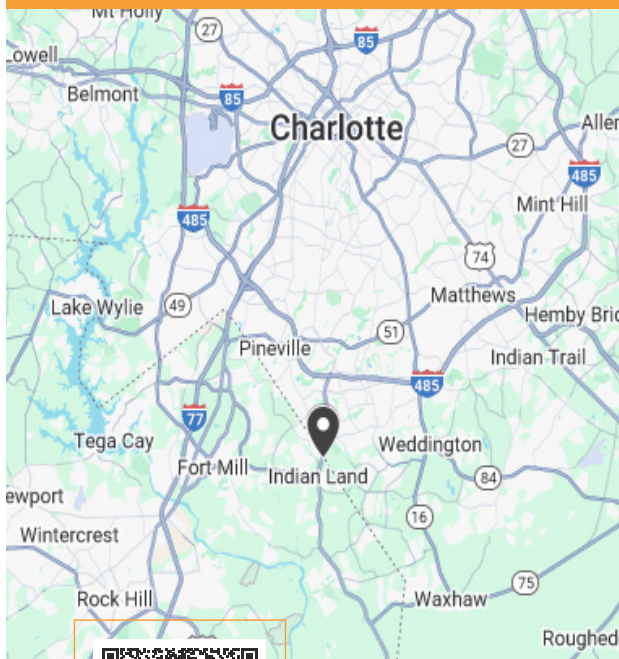


## FOR SALE

## \$1,600,000



## DEVELOPMENT OPPORTUNITY



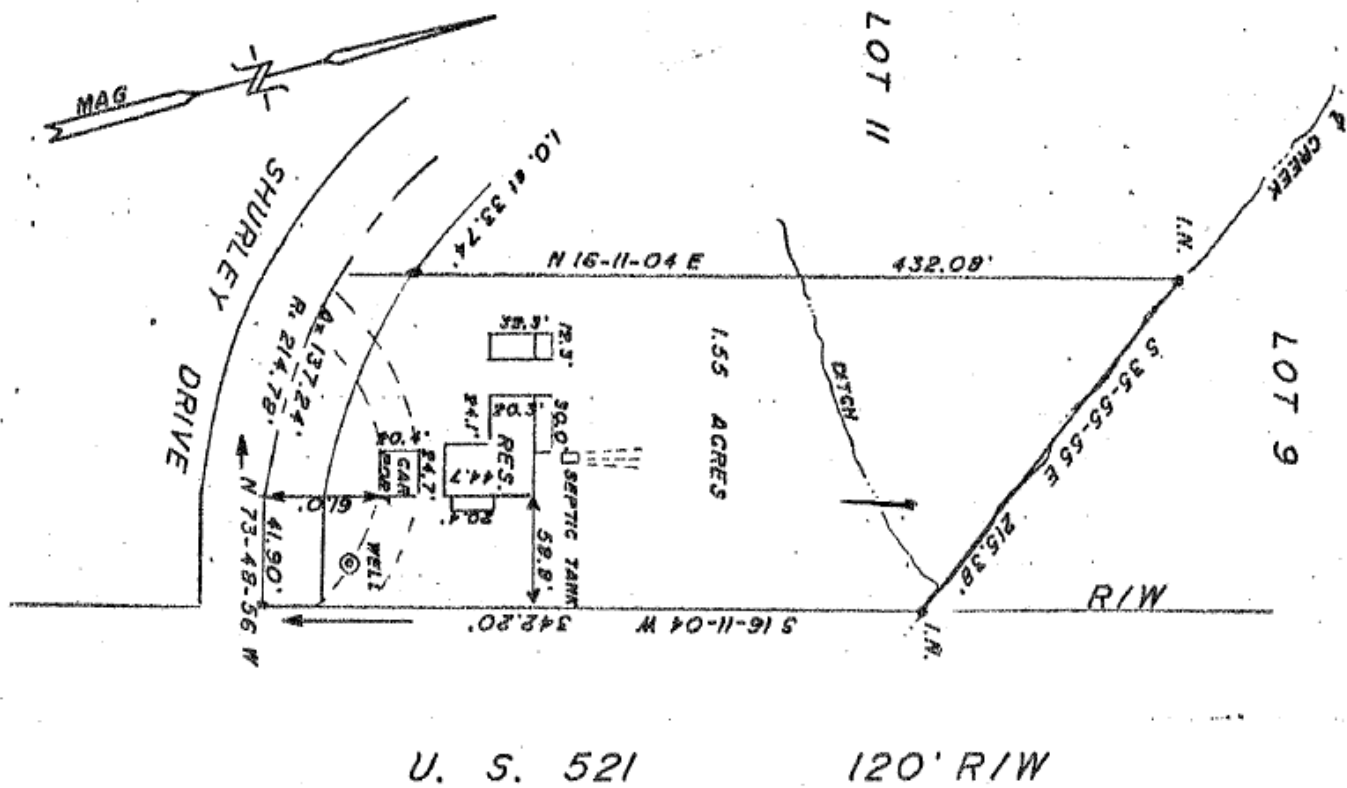
- ±1.55 Acres Zoned LDR (Low Density Residential) in Lancaster County. *Will Sell Subject to Rezoning*
- Highway Visibility and Accessibility - Located just across the NC/SC border and directly across from the Indian Land Super Walmart at Signalized Intersection of Charlotte Highway (us-521) and Sandra Lane
- Excellent Site for Retail, Professional Office, Mixed-Use with the potential to assemble more land
- ±1.5 Miles from RedStone (a ±310,000 SF Regional Shopping Center Anchored by 14-Screen Stone Theaters)
- Located in the Fast-Growing Indian Land and Fort Mill Area just south of the NC/SC State Line and within the Charlotte MSA



**Miles Curley**  
Senior Commercial Agent  
803-448-9589 | Miles@tuttleco.com



**Debbie Weatherby**  
Vice President/Broker  
803-992-6110 | Debbie@tuttleco.com



**Miles Curley**  
Senior Commercial Agent  
803-448-9589 | Miles@tuttleco.com



**Debbie Weatherby**  
Vice President/Broker  
803-992-6110 | Debbie@tuttleco.com



# ±1.55 Acre Development Opportunity

10051 Charlotte Highway, Indian Land, South Carolina 29707

## LOCATION AERIAL



**Miles Curley**  
Senior Commercial Agent  
803-448-9589 | Miles@tuttleco.com



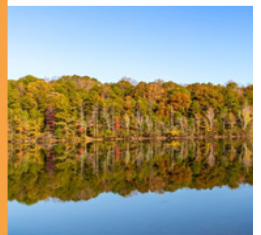
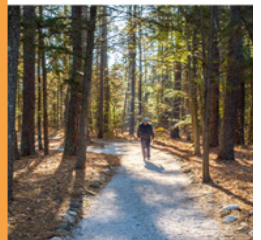
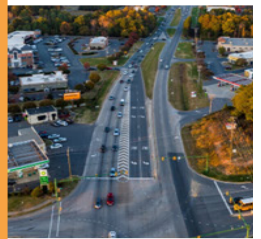
**Debbie Weatherby**  
Vice President/Broker  
803-992-6110 | Debbie@tuttleco.com

300 Technology Center Way, Suite 410 | Rock Hill, South Carolina 29730 | 803-366-1158 | tuttleco.com

## AREA AMENITIES & ATTRACTIONS



- Indian Land is the second fastest-growing ZIP code in South Carolina
- Located 45 Minutes South of Charlotte and a Hour and a Half North of Columbia
- Indian Land is conveniently located with Access to Highway 521



### MUSC

MUSC Health Anticipated to Break Ground in 2025 on a Three-Story Medical Office Building and MUSC Health Indian Land Medical Center, a Full-Service Hospital.



### Red Stone

Phase I Completed: ±79,294 Retail Space Anchored by 14-Screen Multiplex Cinema.

Phase I Additional Retail: Building G ±7,488 SF Overlooks Common Area Event Lawn (Fall 2026)

Phase II Residential/Commercial: 251 Apartment Units, 15 Townhomes & Building H ±8,042 SF Commercial Space



### University of South Carolina - Lancaster

USC Lancaster Indian Land Location is the Preeminent Provider of Higher Education Opportunities in the Dynamic and Growing Panhandle Region of Lancaster County.



**Miles Curley**

Senior Commercial Agent

803-448-9589 | Miles@tuttleco.com



**Debbie Weatherby**

Vice President/Broker

803-992-6110 | Debbie@tuttleco.com