



South End Office Condo For Sale Or Lease

1 Corpus Christi Place, Unit 111
Hilton Head Island, South Carolina 29928

Property Highlights

- Professional office condo for sale or lease on the south end of Hilton Head Island
- Located just off the Sea Pines Circle with easy access to the entire island
- Interior recently updated by Seller
- Three story condo with functional office layout on floors 1 and 2 and storage on the 3rd floor
- Large windows around three sides of the condo allow for tons of natural light
- Contact David Bachelder at (843) 422-6543 for further information and showing instructions

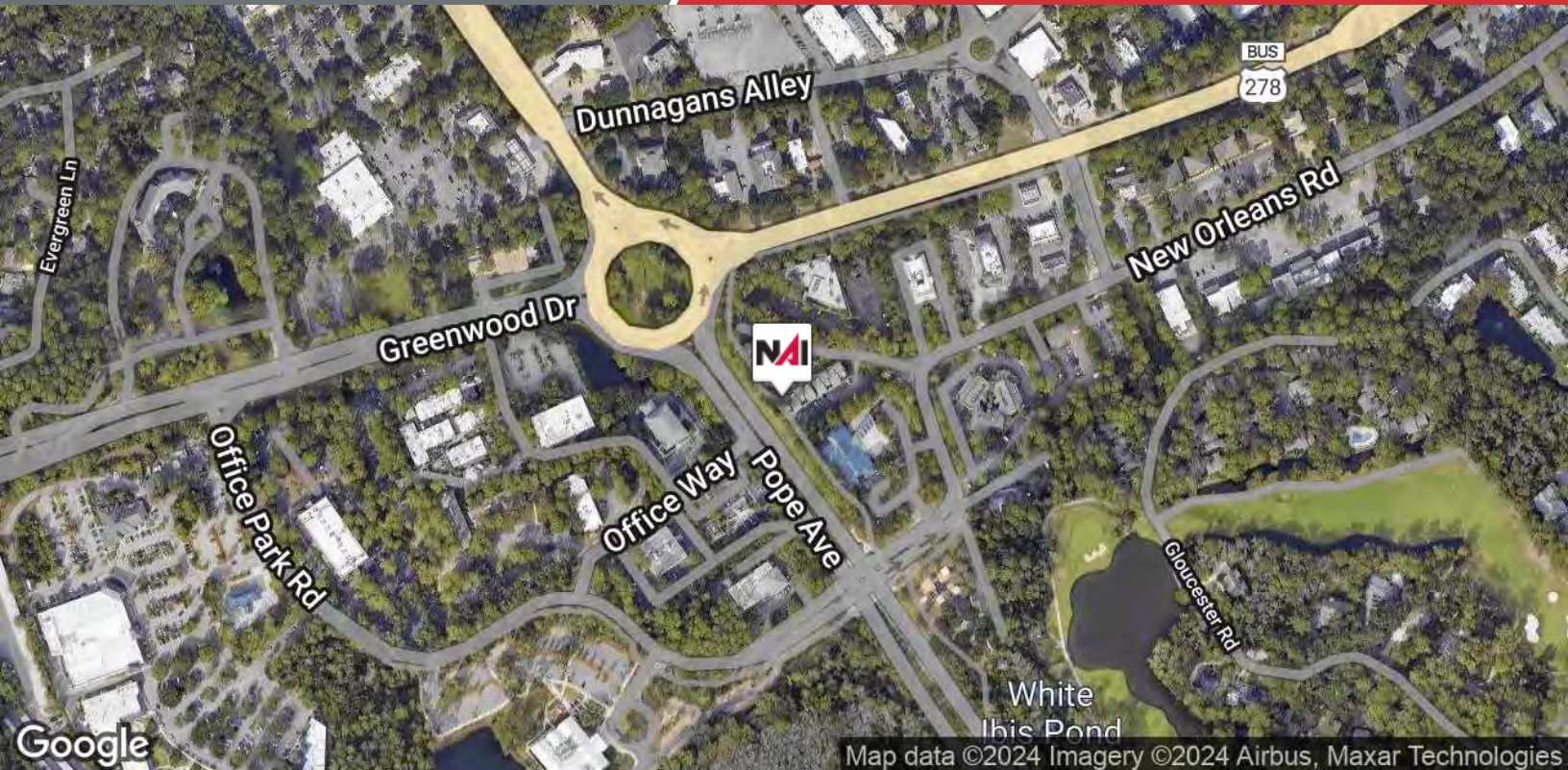
Offering Summary

Building Size:	1,586 SF
Sale Price:	\$285,000
Regime Fee:	\$875 per Month
2024 Property Taxes:	\$3,176.19
Lease Rate:	\$3,000 per Month
Lease Type:	Modified Gross
CAM, Taxes, & Insurance:	Included in the Rent
Utilities:	Tenant Expense

For More Information

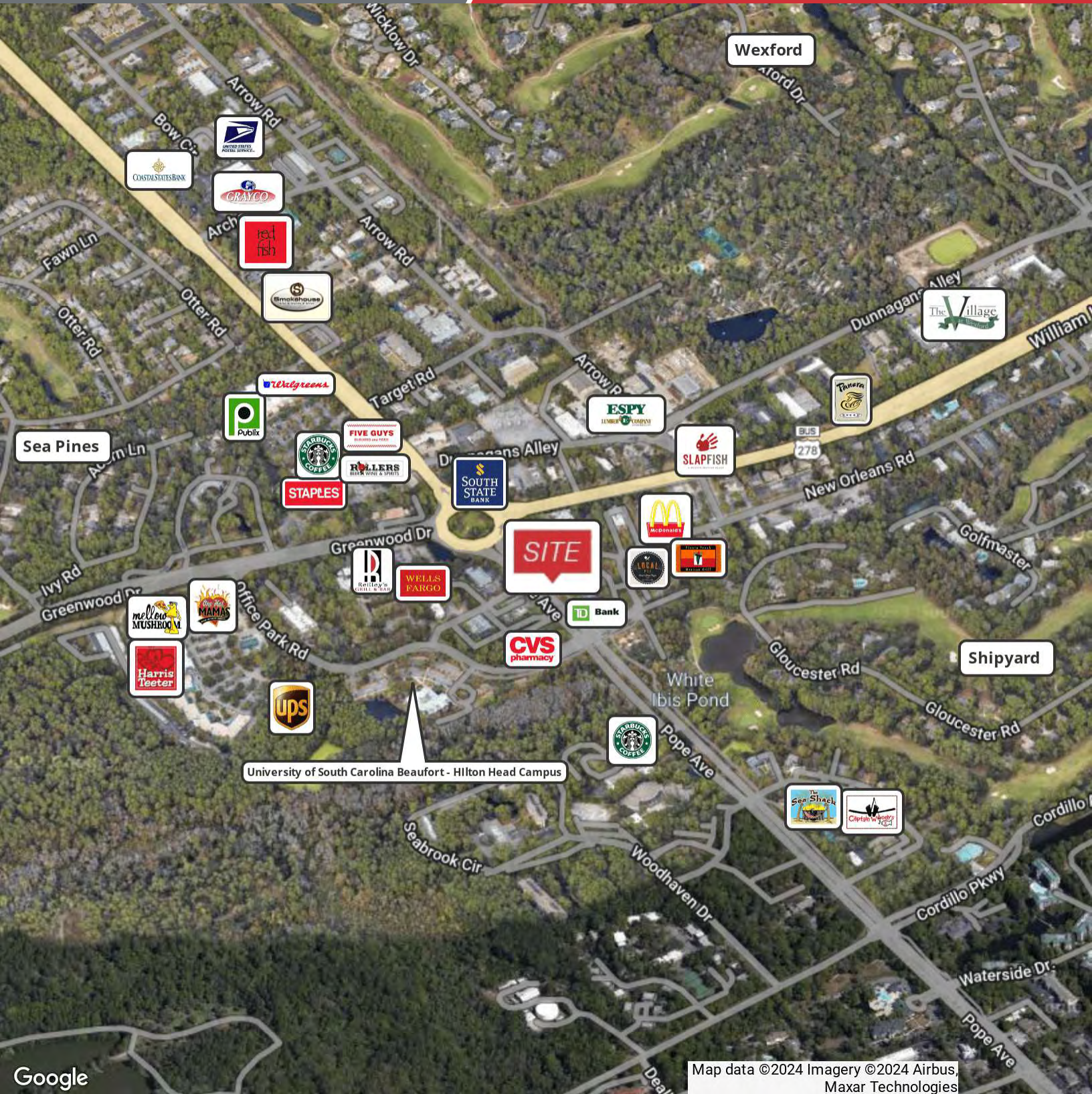
David Bachelder Jr.

O: 843 837 4460 x4
davidjr@naicarolinacharter.com



We obtained the information above from sources we believe to be reliable. However, we have not verified its accuracy and make no guarantee, warranty or representation about it. It is submitted subject to the possibility of errors, omissions, change of price, rental or other conditions, prior sale, lease or financing, or withdrawal without notice. We include projections, opinions, assumptions or estimates for example only, and they may not represent current or future performance of the property. You and your tax and legal advisors should conduct your own investigation of the property and transaction.

1227 May River Road, Suite 100
Bluffton, SC 29910
843 837 4460 tel
naicarolinacharter.com

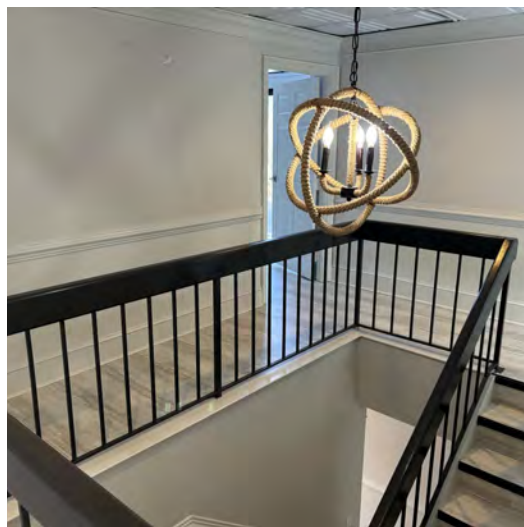
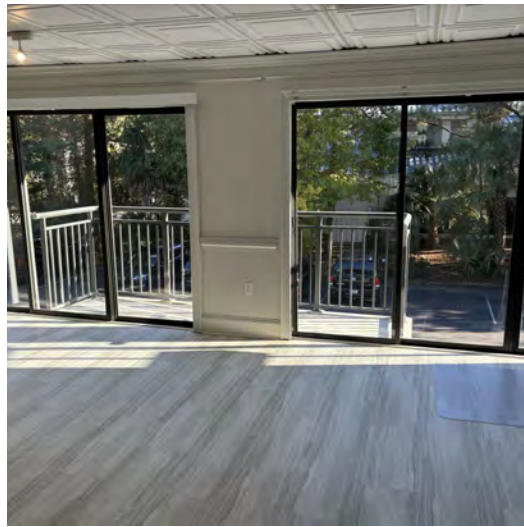


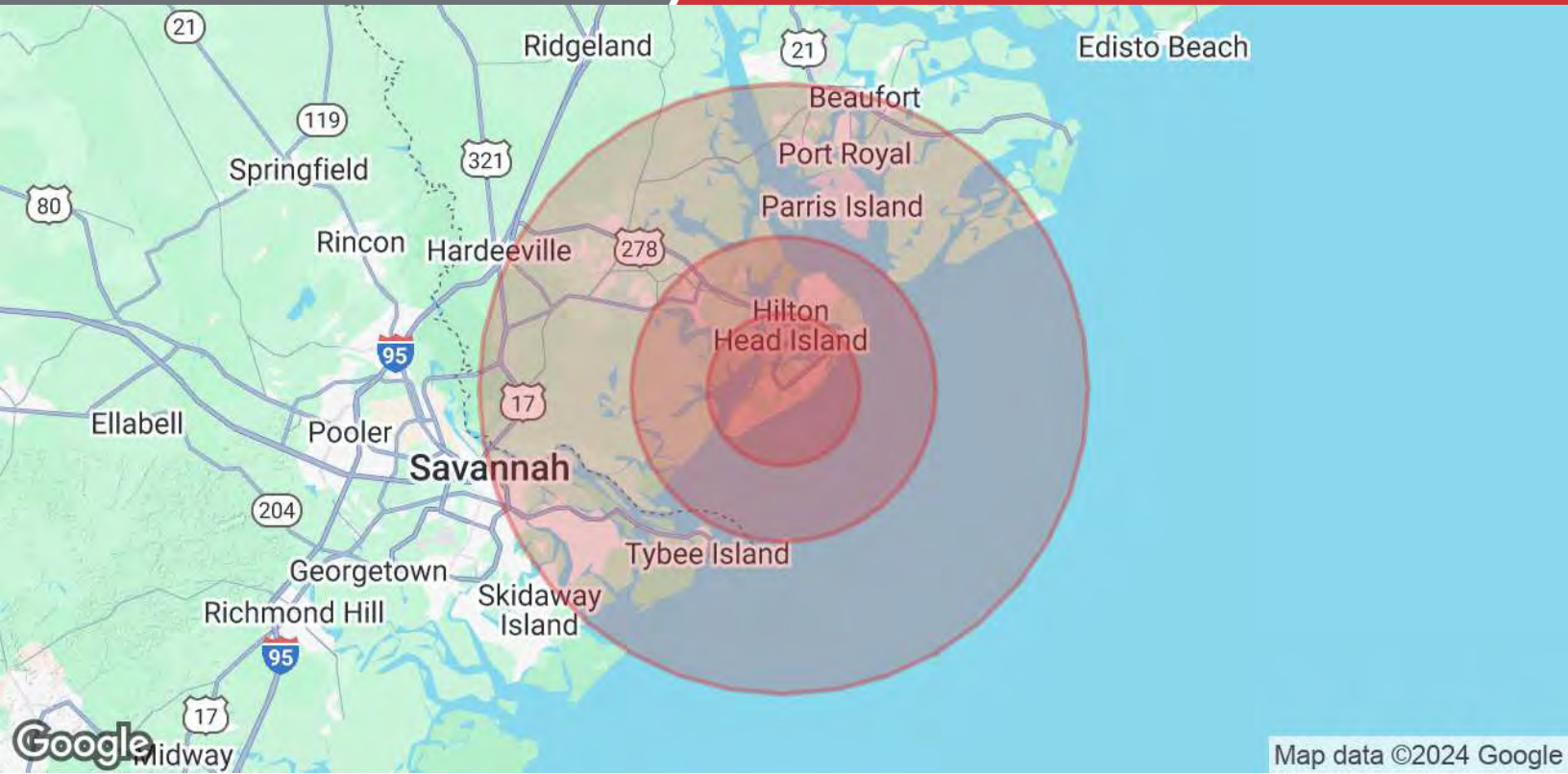
Google

Map data ©2024 Imagery ©2024 Airbus, Maxar Technologies

We obtained the information above from sources we believe to be reliable. However, we have not verified its accuracy and make no guarantee, warranty or representation about it. It is submitted subject to the possibility of errors, omissions, change of price, rental or other conditions, prior sale, lease or financing, or withdrawal without notice. We include projections, opinions, assumptions or estimates for example only, and they may not represent current or future performance of the property. You and your tax and legal advisors should conduct your own investigation of the property and transaction.

1227 May River Road, Suite 100
Bluffton, SC 29910
843 837 4460 tel
naicarolinacharter.com





Map data ©2024 Google

Population	5 Miles	10 Miles	20 Miles
Total Population	25,036	58,033	233,069
Average Age	54	51	46
Average Age (Male)	54	51	45
Average Age (Female)	54	52	47
Households & Income	5 Miles	10 Miles	20 Miles
Total Households	11,796	25,894	98,517
# of Persons per HH	2.1	2.2	2.4
Average HH Income	\$143,274	\$130,686	\$112,597
Average House Value	\$786,478	\$700,634	\$546,374

Demographics data derived from AlphaMap