

WORK AND PLAY  
REDEFINED

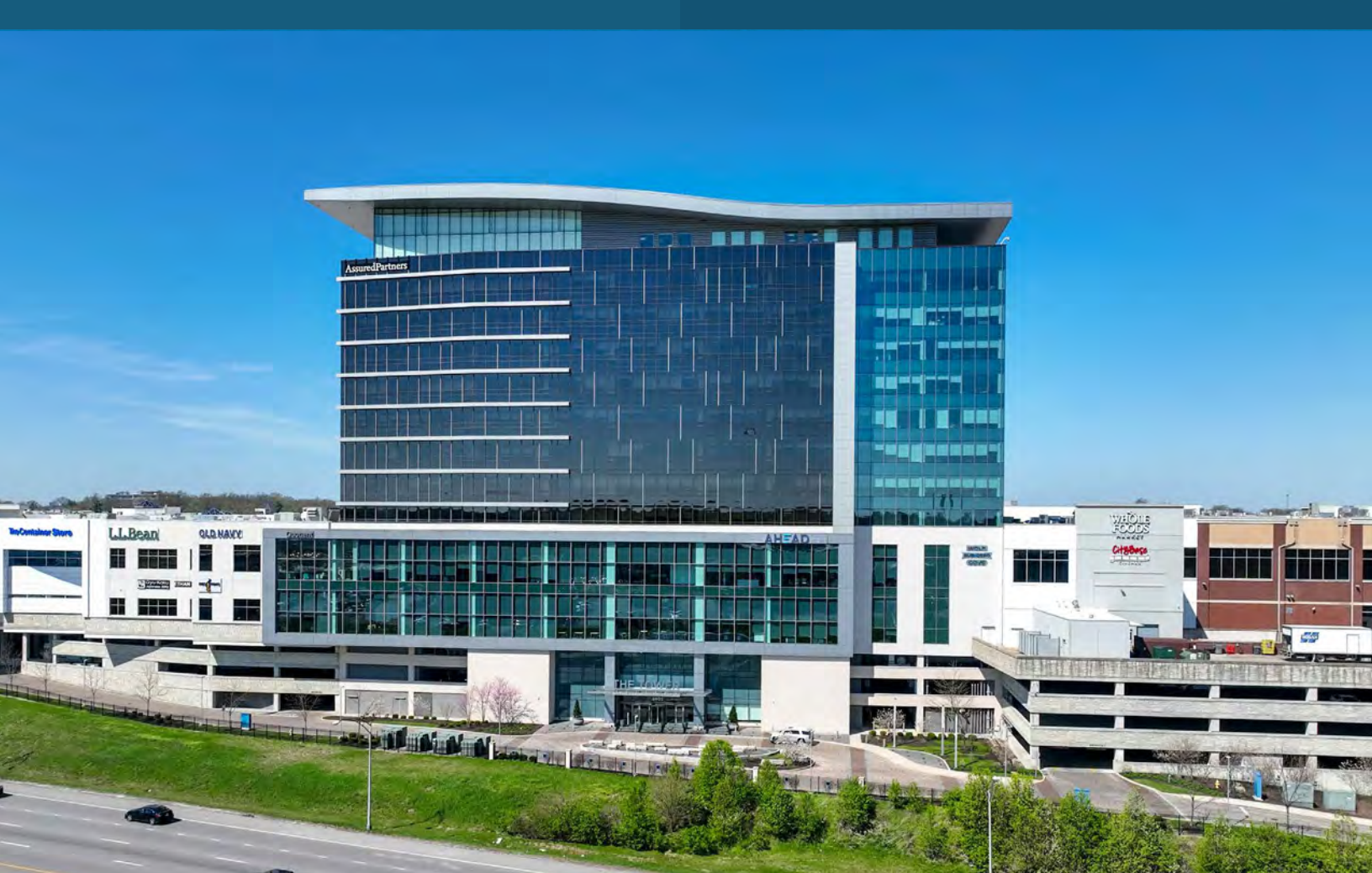
# THE KENWOOD COLLECTION



THE TOWER  
AT THE KENWOOD COLLECTION



CUSHMAN &  
WAKEFIELD



YOUR PERFECT DAY  
**STARTS HERE**

Discover a vibrant work-play environment at The Kenwood Collection, where on-site amenities cater to every aspect of your lifestyle. Whether looking to grab a quick bite at Whole Foods Market or unwind after work with a movie at Kenwood Theater, enjoy endless options for a perfectly balanced day.

**RESTAURANTS**

- |                            |                                    |
|----------------------------|------------------------------------|
| 1. 13 Knives               | 14. Texas Roadhouse                |
| 2. Gyu-Kaku                | 15. Taste of Belgium               |
| 3. The Cheesecake Factory  | 16. Dewey's Pizza                  |
| 4. Maggiano's Little Italy | 17. Trio Bistro                    |
| 5. Aroma Sushi             | 18. Buffalo Wild Wings             |
| 6. El Rancho Grande        | 19. The Works Pizza                |
| 7. Embers Steakhouse       | 20. Texas De Brazil (opening soon) |
| 8. Red Lobster             |                                    |
| 9. Outback Steakhouse      |                                    |
| 10. First Watch            |                                    |
| 11. Chuy's                 |                                    |
| 12. Cooper's Hawk          |                                    |
| 13. Bob Evans              |                                    |

**RETAIL**

- |                   |
|-------------------|
| 1. Macy's         |
| 2. Dillards       |
| 3. Barnes & Noble |
| 4. Apple Store    |

- |                           |
|---------------------------|
| 5. RH Cincinnati          |
| 6. Nordstrom              |
| 7. Whole Foods Market     |
| 8. LL Bean                |
| 9. Pottery Barn           |
| 10. The Container Store   |
| 11. Crate & Barrel        |
| 12. Yardbird              |
| 13. PXG Golf              |
| 14. The Fresh Market      |
| 15. Dick's Sporting Goods |
| 16. Ulta Beauty           |
| 17. HomeGoods             |
| 18. Staples               |
| 19. Trader Joe's          |

**FAST CASUAL**

- |                         |
|-------------------------|
| 1. Popeyes              |
| 2. Chick-Fil-A          |
| 3. Graeter's Ice Cream  |
| 4. Panera Bread         |
| 5. Chipotle             |
| 6. Jimmy John's         |
| 7. Penn Station         |
| 8. Dunkin               |
| 9. Arby's               |
| 10. McDonalds           |
| 11. Starbucks           |
| 12. Milk Jar            |
| 13. Bibibop Asian Grill |

- |                      |
|----------------------|
| 14. Potbelly         |
| 15. Jersey Mike's    |
| 16. Taziki's         |
| 17. Wendy's          |
| 18. McAlister's Deli |

**FITNESS**

- |                   |
|-------------------|
| 1. Crunch Fitness |
| 2. Orangetheory   |
| 3. Pure Barre     |

**HOTELS**

- |                |
|----------------|
| 1. Hampton Inn |
|----------------|

SERIOUS WORK.  
**SERIOUS FUN.**

Welcome to The Kenwood Collection, where business and pleasure collide to create an elevated tenant experience. Situated in Cincinnati's prestigious Kenwood submarket, this class A+ property offers an unparalleled selection of office spaces and onsite urban amenities tailored to meet the needs of today's leading companies.

**HIGHLIGHTS**



**3,137 parking garage spaces**



**Stunning floor-to-ceiling glass windows**



**Direct accessibility to I-71**



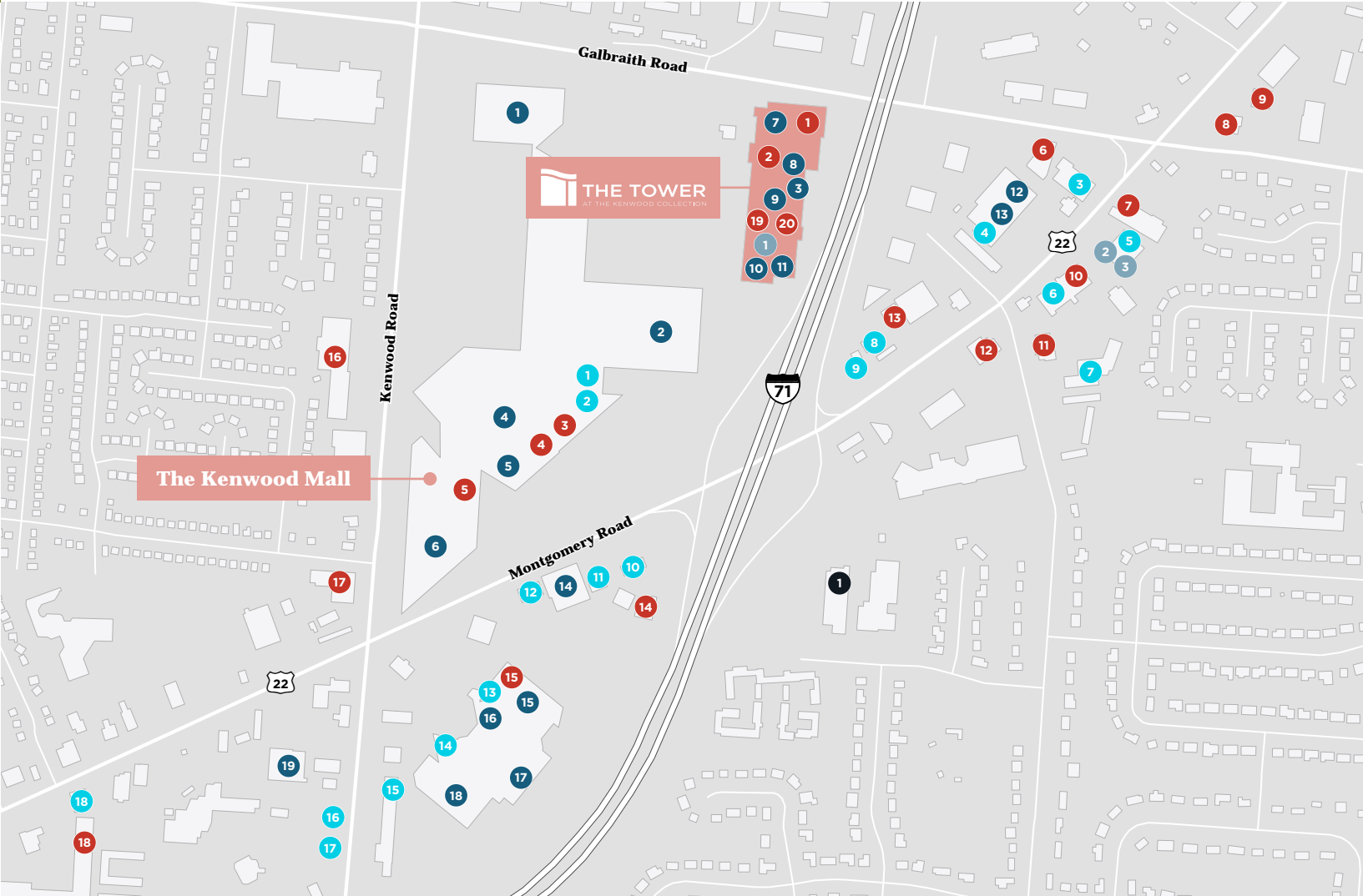
**On-site shopping, restaurants, fitness, & entertainment venues**



**292,000 SF of office space**



**Prime location in prestigious Kenwood submarket**

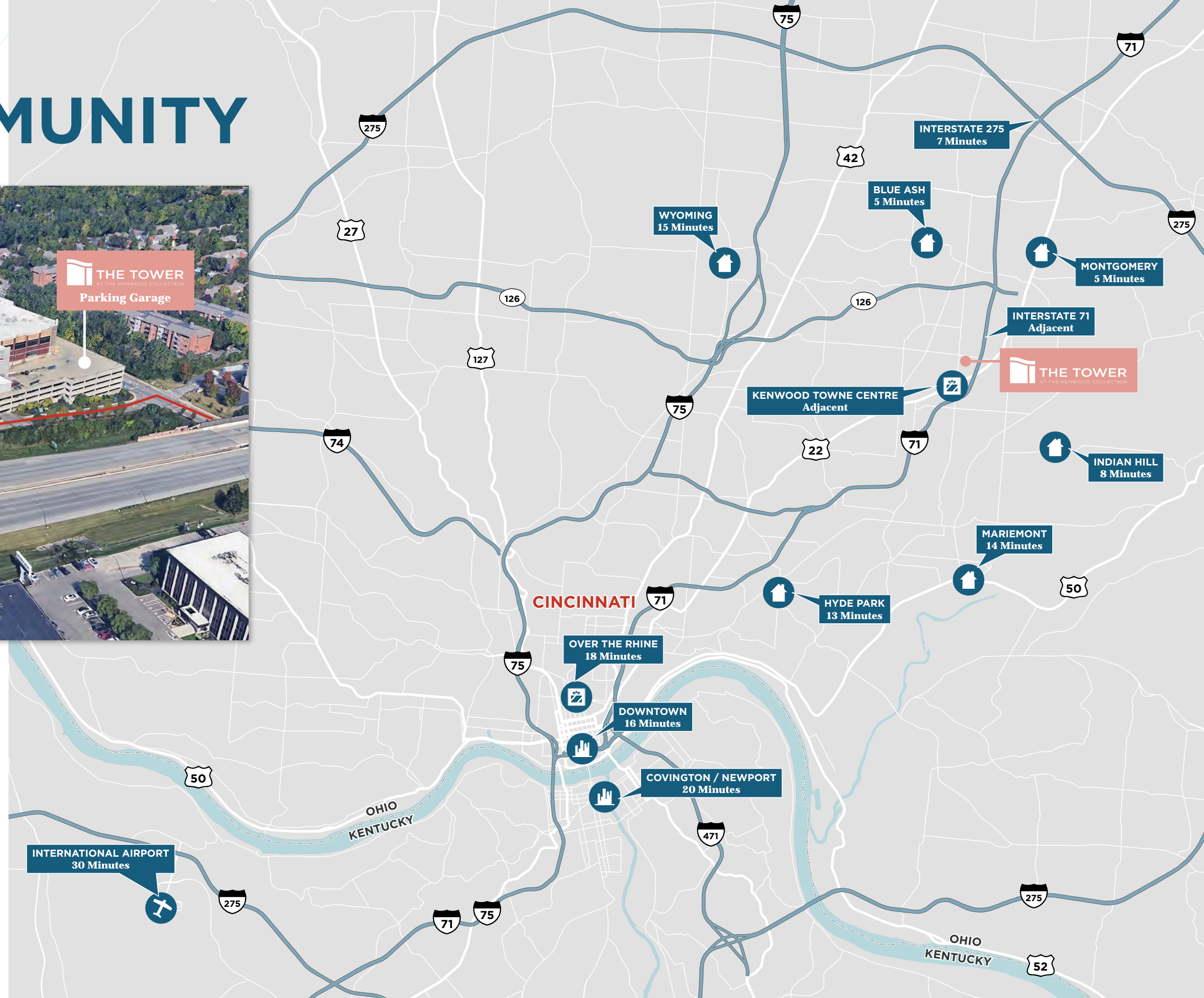


# FROM COMMUTE TO COMMUNITY



Experience effortless connectivity at The Kenwood Collection, where access to Interstate 71 and U.S. Route 22 “ensures easy connectivity to anywhere in Cincinnati.”

Located in the heart of greater Cincinnati’s dynamic retail hub, The Kenwood Collection also empowers tenants to explore this bustling neighborhood by foot, making it the ideal choice for companies seeking a vibrant urban setting, without the city traffic.

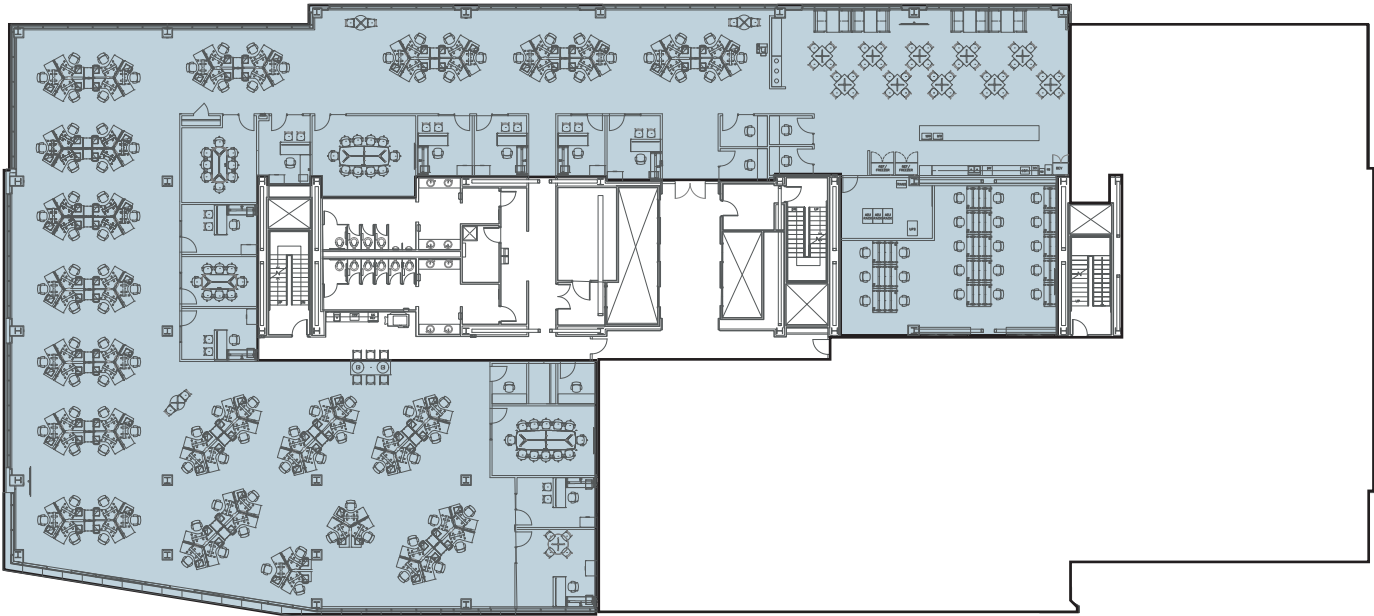




AVAILABLE SPACE

Floor 2

Suite 2100: 18,323 SF



YOUR WORKSPACE  
**YOUR WAY**

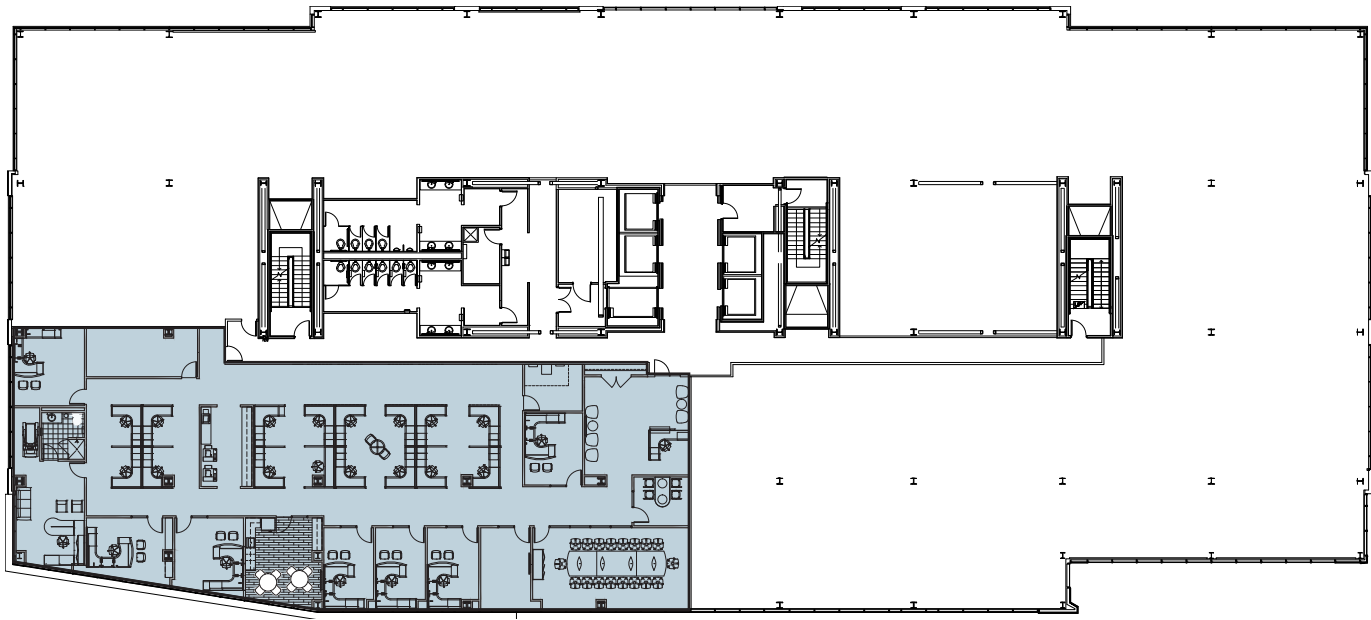
With tailored floor plans and customized workspaces, The Kenwood Collection’s versatile design offers a premier environment for professionals to establish their distinctive presence.

AVAILABLE SPACE

Floor 4

Suite 4100: 7,881 SF

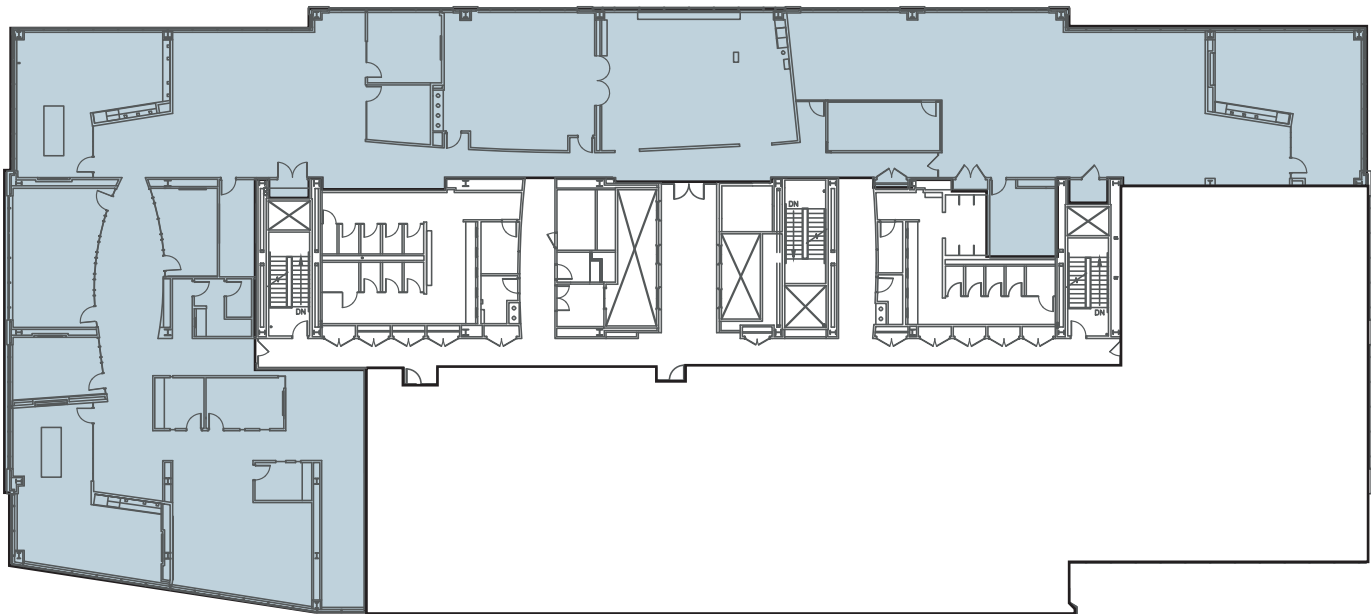
Available March 1, 2026

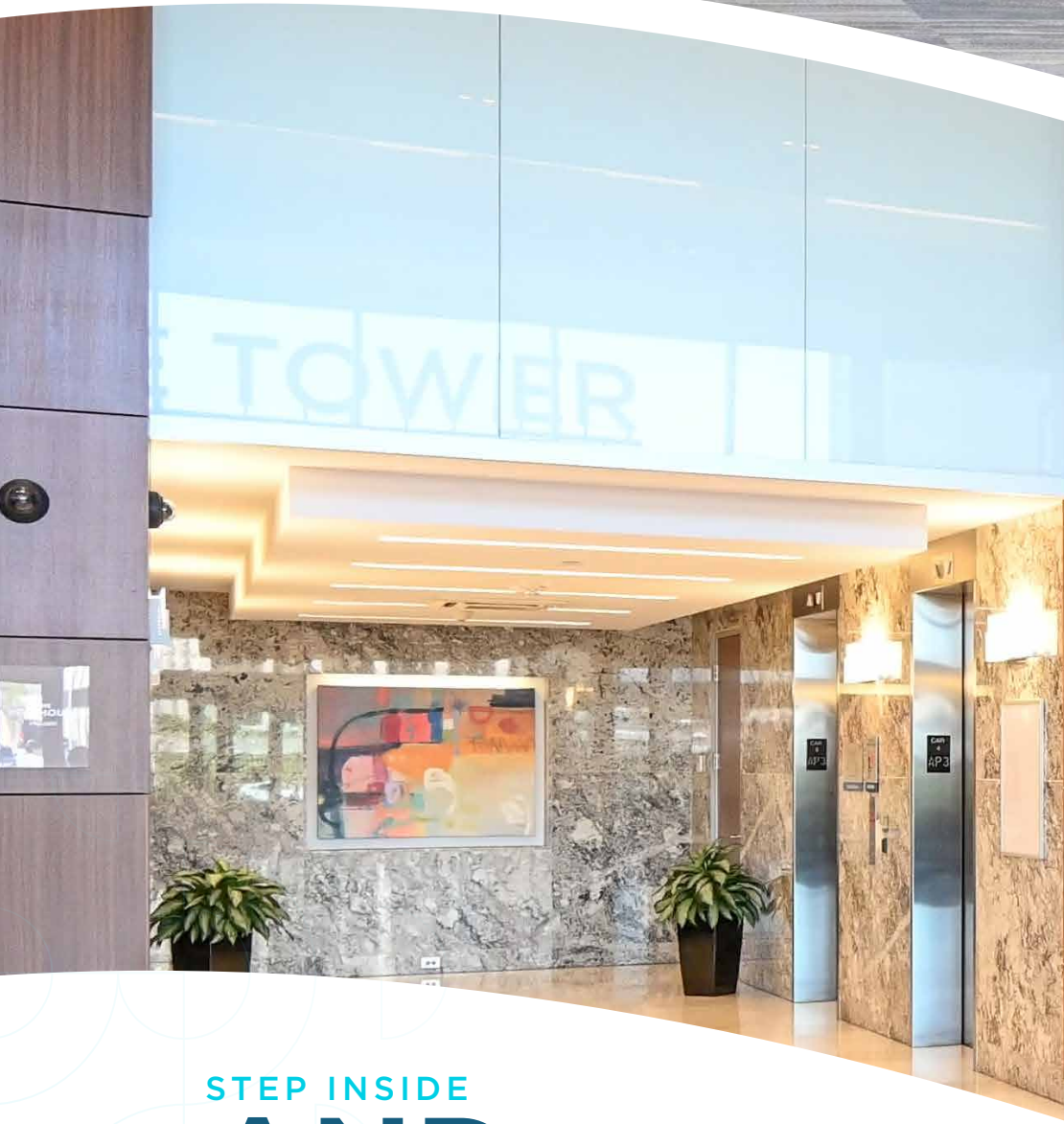


AVAILABLE SPACE

Floor 8

Suite 8100: 16,585 SF





STEP INSIDE  
**AND  
EXPLORE**



FOR MORE INFORMATION,  
PLEASE CONTACT:

**Digger Daley**

Senior Director

Direct: 513 763 3028

[digger.daley@cushwake.com](mailto:digger.daley@cushwake.com)

**Joe Janszen**

Senior Director

Direct: +1 513 549 3011

[joe.janszen@cushwake.com](mailto:joe.janszen@cushwake.com)



©2024 Cushman & Wakefield. All rights reserved. The information contained in this communication is strictly confidential. This information has been obtained from sources believed to be reliable but has not been verified. No warranty or representation, express or implied, is made as to the condition of the property (or properties) referenced herein or as to the accuracy or completeness of the information contained herein, and same is submitted subject to errors, omissions, change of price, rental or other conditions, withdrawal without notice, and to any special listing conditions imposed by the property owner(s). Any projections, opinions or estimates are subject to uncertainty and do not signify current or future property performance.