

**THE PLACE  
TO BE  
AT FISHERMAN'S  
WHARF**

# zephyr WALK

1-99 JEFFERSON STREET





# WHAT WE'RE LOOKING FOR

HIGH QUALITY, CREATIVE, TOP CROWD PLEASING RETAILERS AND CAFES



## JOIN LOCAL ATTRACTIONS & TENANTS

Ripley's Believe it or Not, Aquarium of the Bay, Red & White Fleet, Bay Tours, SkyStar Ferris Wheel, USS Panpanito Submarine Museum, Fresh Crab Stands, Boudin Bakery, It's Sugar, and Musée Mécanique to name a few!

# COME ON BOARD ZEPHYR WALK, THE FIRST STOP AT FISHERMAN'S WHARF



**763 - 2,316 SF  
RETAIL SPACES  
AVAILABLE**

●●●●● An unforgettable experience of San Francisco!!

Jul 2023 • Friends

We love visiting Fisherman's Wharf since it is one of our favorite places to visit in San Francisco. We love walking around the Wharf and having lunch or dinner in one of the restaurants and ice cream in the ice cream shop and watching the sea lions. We have lived in San Francisco Bay Area for over 36 years and can never get tired of visiting Fisherman's Wharf. It is a very special place and we love to take our guests visiting from overseas there to enjoy this wonderful location and create memories of San Francisco!!

Written April 2, 2024

An entire block of street front retail

At the doorstep of Pier 39

Among the highest foot traffic counts in all of San Francisco

Adjacent to the 361-room Zephyr Hotel



**1,000+**  
Sea Lions This Year...alone!



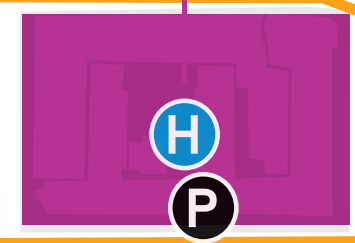
**PIER 39**



**P 150 PARKING SPACES**

**P 180 PARKING SPACES**

*Ripley's*  
**Believe It or Not!**



**P 500 PARKING SPACES**



**P 66 PARKING SPACES**

**P 100 PARKING SPACES**

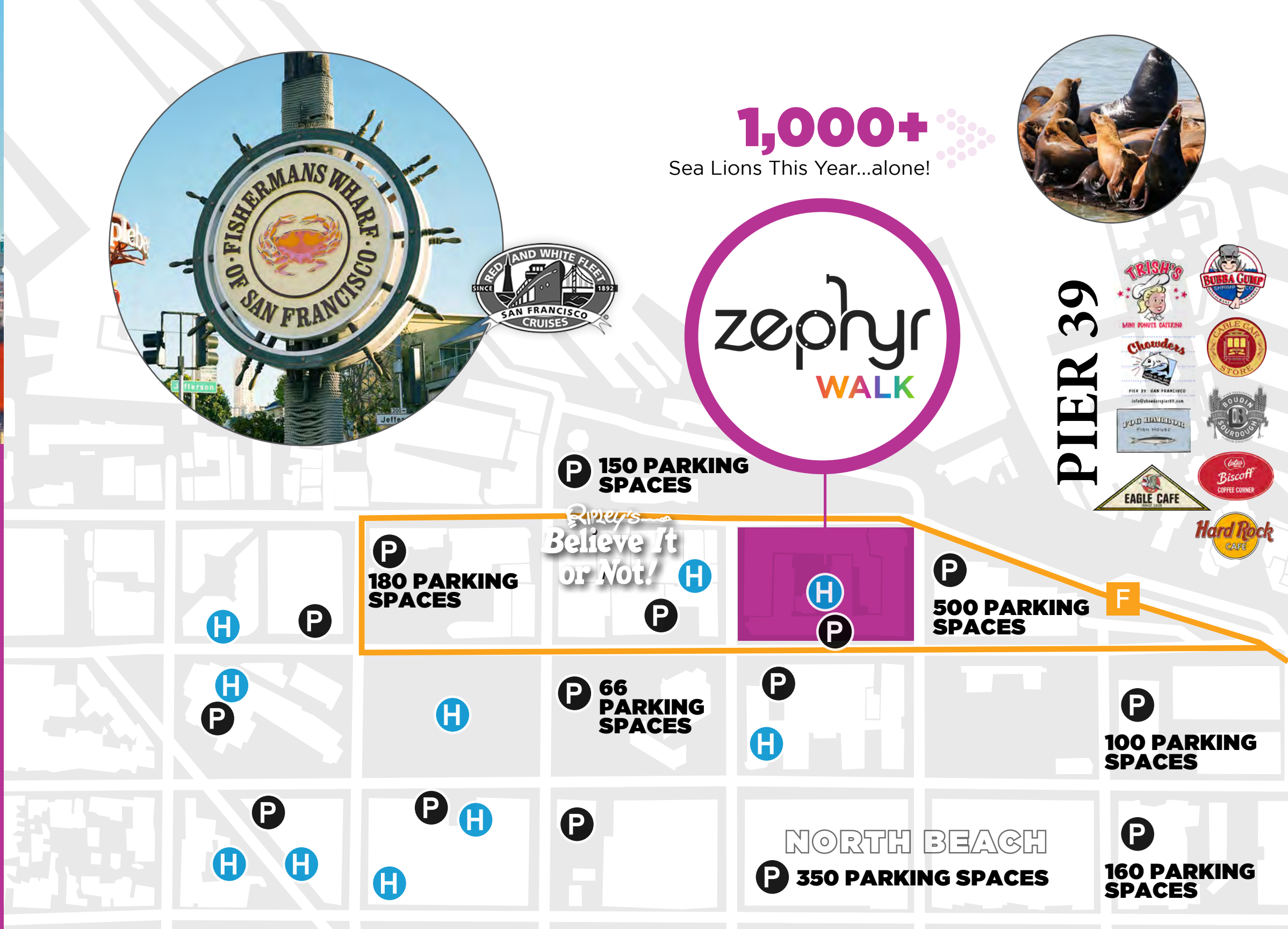
**NORTH BEACH**  
**P 350 PARKING SPACES**

**P 160 PARKING SPACES**

**H**  
**3,200 HOTEL ROOM COUNT**

**P**  
**PARKING**

**MUNI F-LINE**





**zephyr**  
WALK

PIER  
39



**DOWNTOWN SAN FRANCISCO**



**NORTH BEACH**



**RUSSIAN HILL**



**THE PRESIDIO**

**FISHERMAN'S WHARF DISTRICT**



**882,000** AVERAGE MONTHLY VISITORS

From Downtown San Francisco



**11 MIN BUS**



**1.8 MILE DRIVE**



**8 MIN BIKE RIDE**

Median Age

**36.6**

Median Household  
Income of Visitors

**\$114,400**

Avg Dwell Time

**120 MINS**

San Francisco Tourist  
Destination

**#1**

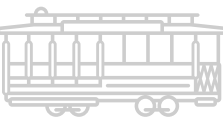
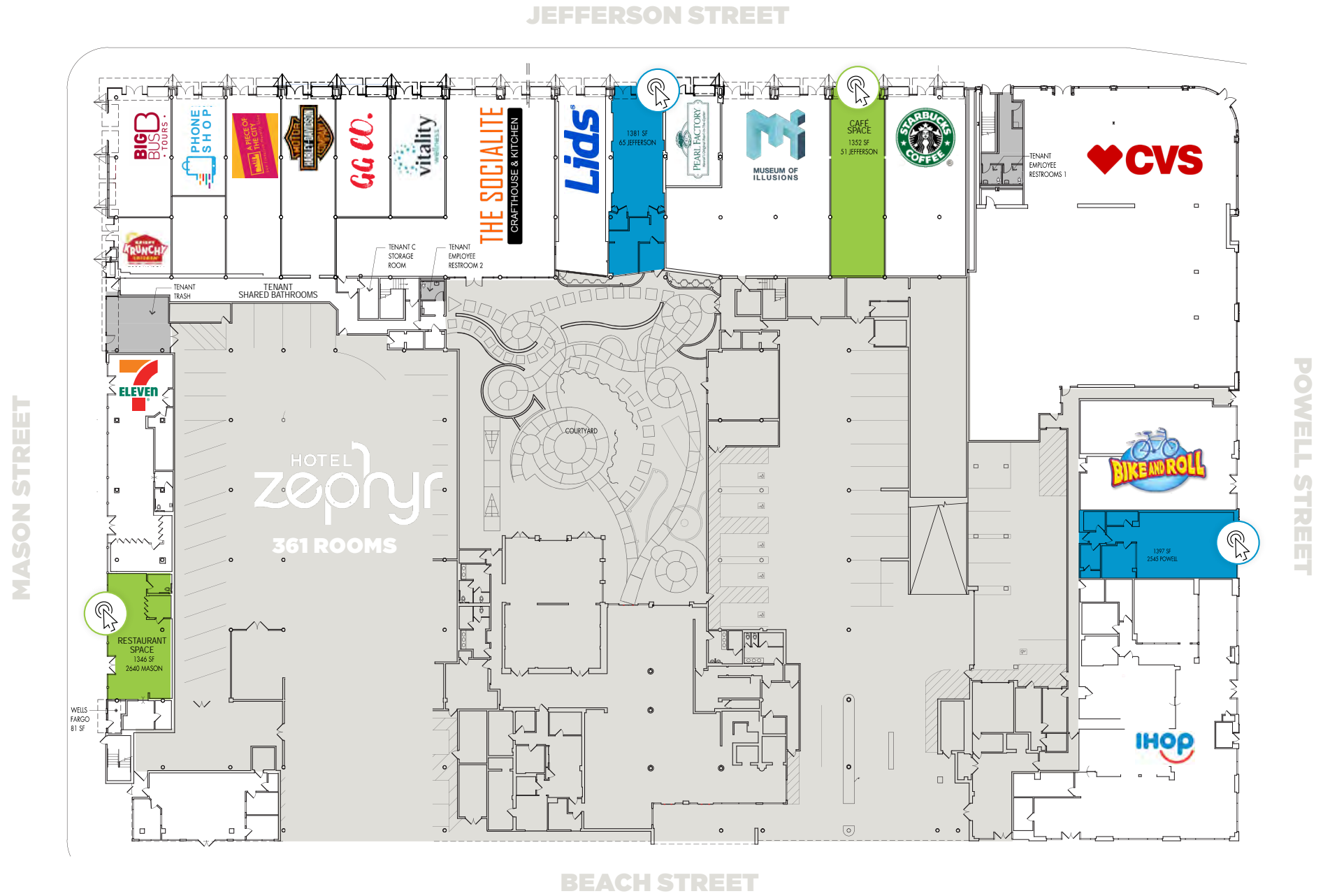
# SITE PLAN

## zephyr WALK

● TRADITIONAL RETAIL SPACE

● RESTAURANT / CAFÉ SPACE

🖱️ CLICK AVAILABLE SPACE TO VIEW SITE



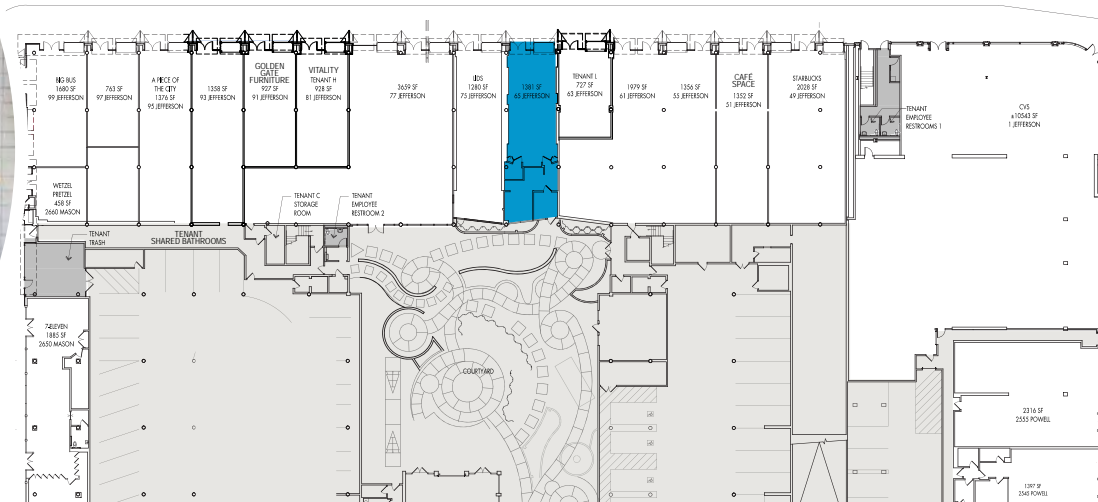
zephyr  
WALK  
65

LUSH  
FRESH  
HANDMADE  
COSMETICS

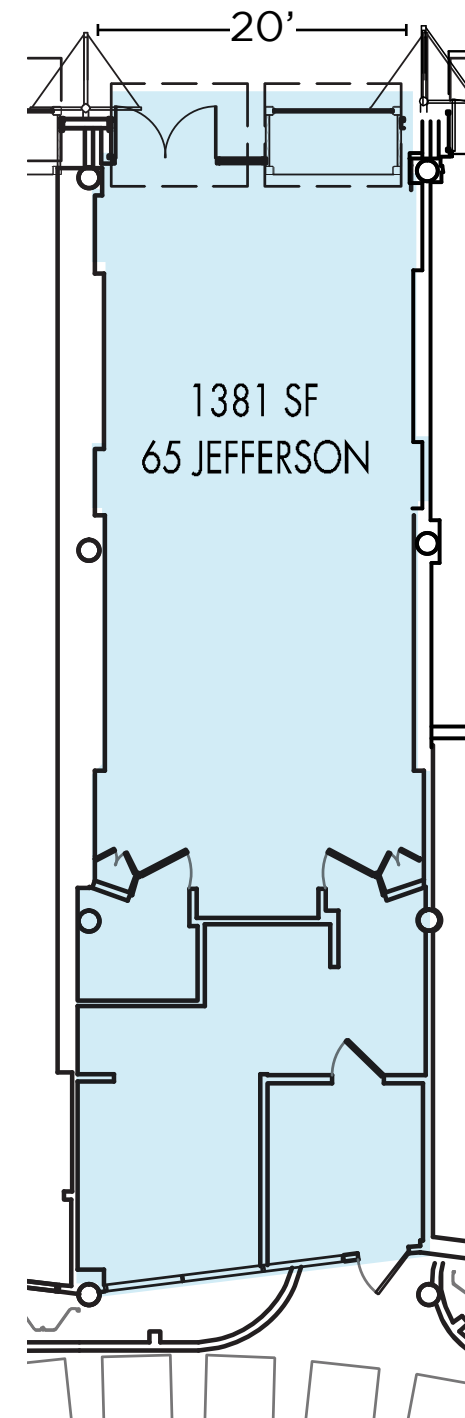
# 65 JEFFERSON STREET

1,381 SF  
Traditional Retail Space

[CLICK HERE](#)



JEFFERSON STREET



FLOOR PLAN

zephyr  
WALK

Mango  
Crazy

51

# 51 JEFFERSON STREET

**1,352 SF**  
Café Space

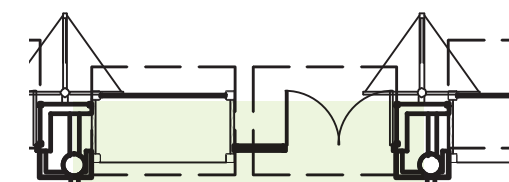
- + 2nd Generation Cafe
- + Prior tenant Mango Crazy

[CLICK HERE](#)



JEFFERSON STREET

20'



CAFÉ  
SPACE

1352 SF  
51 JEFFERSON



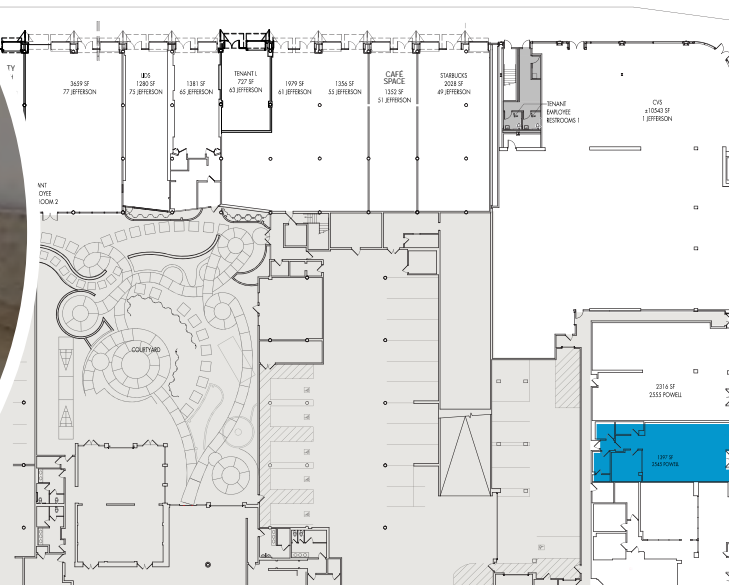
FLOOR PLAN

zephyr  
WALK

# 2545 POWELL STREET

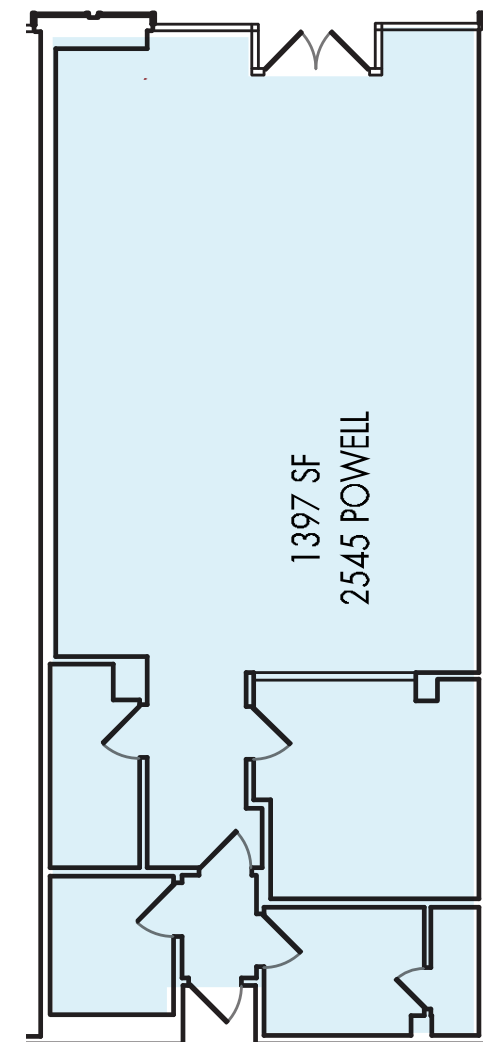
**1,397 SF**  
Traditional Retail Space

[CLICK HERE](#)



POWELL STREET

20'



FLOOR PLAN



zephyr  
WALK

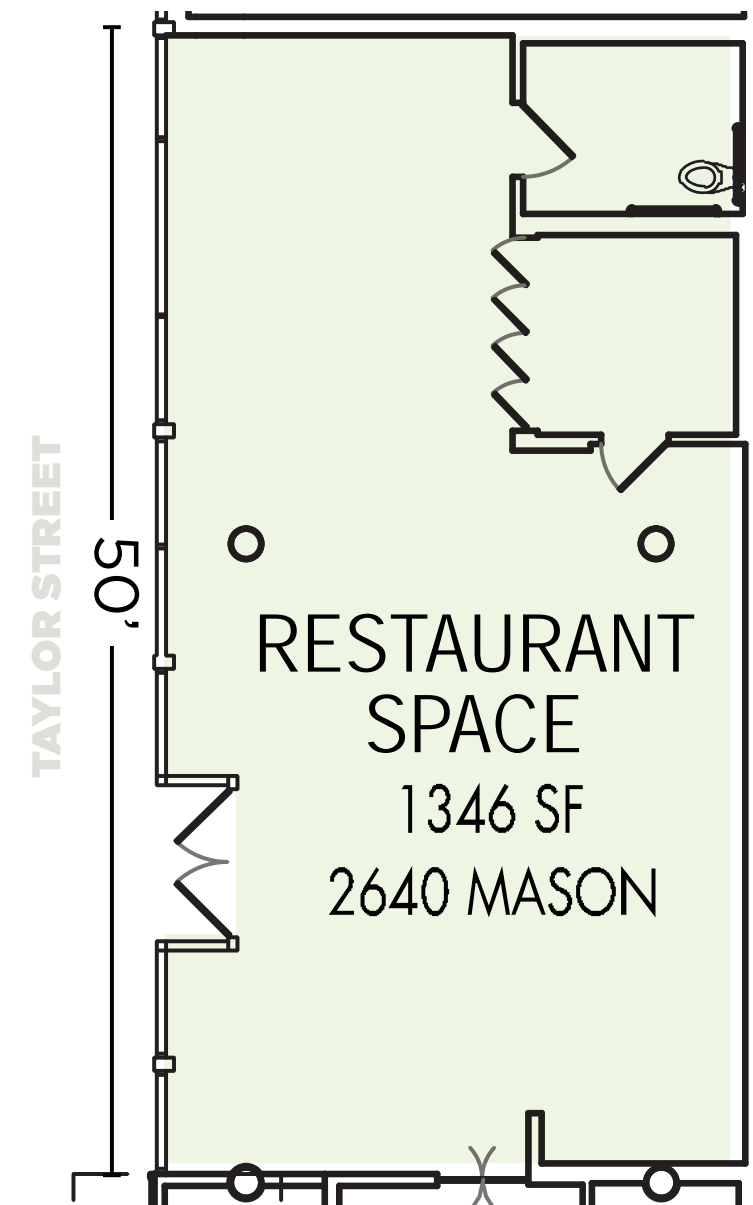
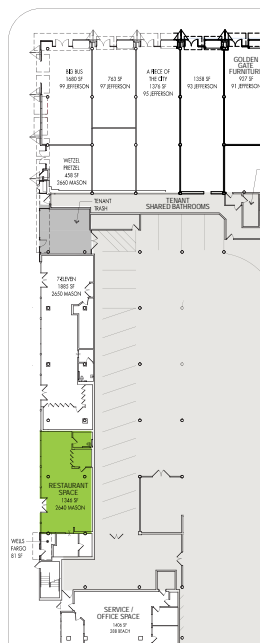
# 2640 MASON STREET

**1,346 SF**

Restaurant Space

- + 2nd generation restaurant space
- + Type 1 hood
- + Private office

[CLICK HERE](#)



FLOOR PLAN



# zephyr WALK

1-99 JEFFERSON STREET

FOR RETAIL LEASING INFORMATION,  
PLEASE CONTACT

**JULIE  
TAYLOR**

1 415 293 6293  
julie.taylor@colliers.com  
CA Lic. 00998395

This document/email has been prepared by Colliers for advertising and general information only. Colliers makes no guarantees, representations or warranties of any kind, expressed or implied, regarding the information including, but not limited to, warranties of content, accuracy and reliability. Any interested party should undertake their own inquiries as to the accuracy of the information. Colliers excludes unequivocally all inferred or implied terms, conditions and warranties arising out of this document and excludes all liability for loss and damages arising there from. This publication is the copyrighted property of Colliers and /or its licensor(s). © 2024. All rights reserved. This communication is not intended to cause or induce breach of an existing listing agreement.

