



The Stow Professional Building

3869 Darrow Rd.

Stow, OH 44224

Property Features

- 26,656 SF Total
- 2 Floors
- 2.28 Acres
- 87 Parking Spaces
- Street Signage Available
- High Visibility on SR-91/Darrow Road
- Easy Access to SR-8
- Lease Rates are \$12-13.50 SF (Modified Gross)



For more information:

Ronald Midcap II
+1 216 455 0900
RMidcap@naipvc.com

MAIN LOBBY



CONFERENCE ROOM



LOWER LEVEL HALL



UPPER LEVEL HALL



COMMON AREAS



SUITE 101



SUITE 102



SUITE 104

LEASED



SUITE 109

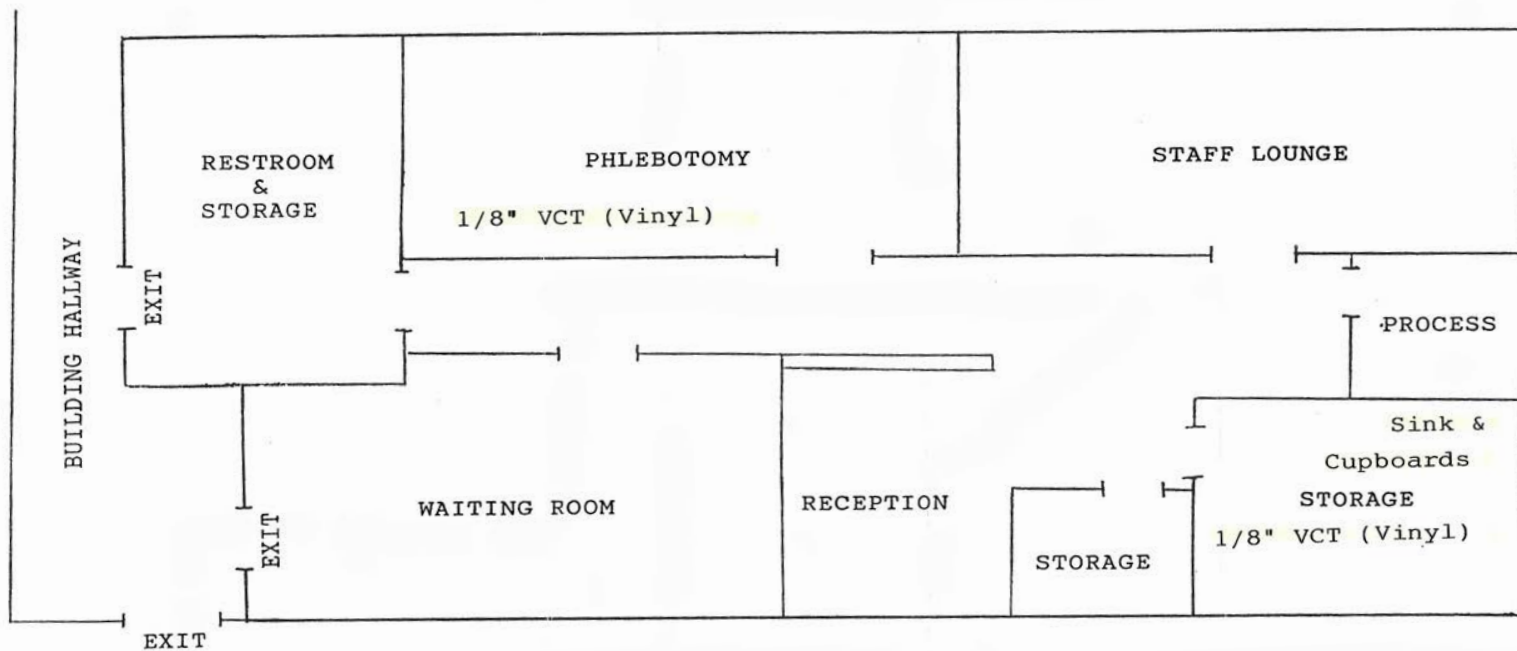
LEASED



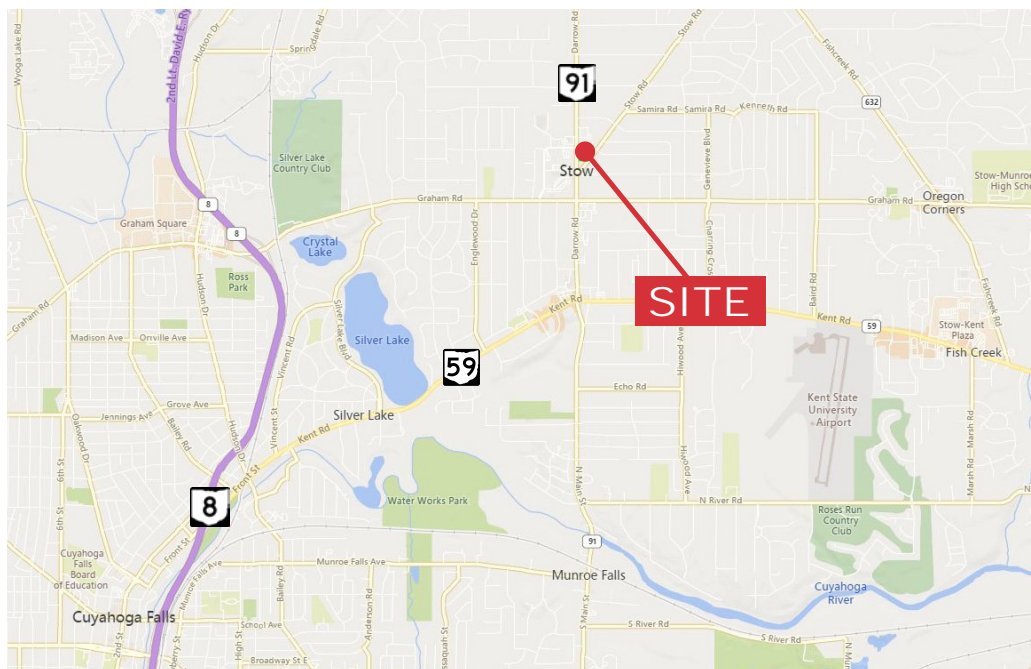
ENTRANCE



DEDICATED PARKING SPACES



SUITE 208



Demographics	1 Mile	3 Miles	5 Miles
Population:	9,590	61,706	136,814
Median Age:	43.6	41.9	41.3
Average HH Income:	\$71,367	\$72,164	\$66,204
Traffic Count:	14,610 CPD	Darrow Rd. @ Uniondale Dr.	18,258 CPD Darrow Rd. near Graham Rd.

Located next to Key Bank on busy Darrow Rd/SR 91 in the main corridor for Stow and across from Stow City Hall and the US Post Office.

