



Brady Sullivan Properties
 670 N. Commercial Street
 Manchester, nh 03101
 603.622.6223



Owner
**BRADY SULLIVAN
 PROPERTIES**

Project
1230 ELM STREET
 MANCHESTER NH

SUITE 102
1,680 USF

Seals

Issues	
Date	Description

Revisions		
No.	Date	Description

Drawing Title
EXISTING PLAN

Issue Date: 11-03-2023

Project No: Project Number Scale: As Indicated

Project Manager: Production Leader:

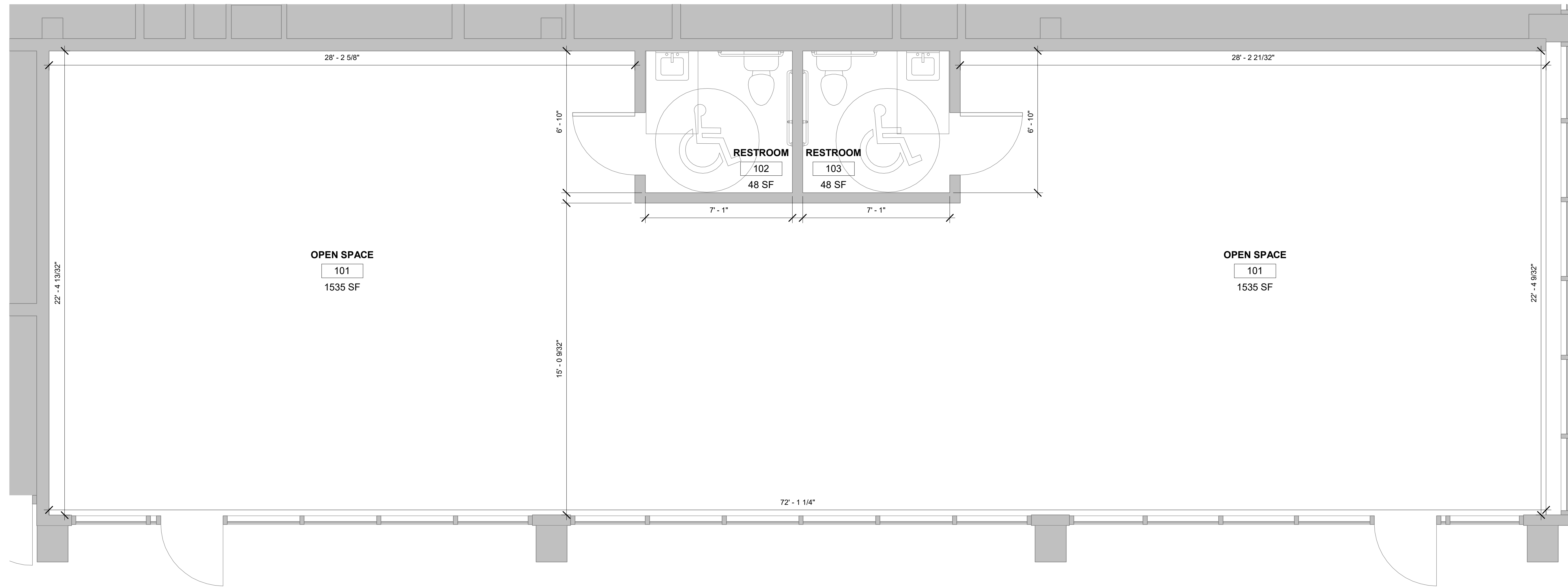
Project Architect: Peer Reviewer:

Drawing Number

A102

LEGEND

	NOT IN SCOPE		PROPOSED ITEMS (HEAVY LINE WEIGHT)
	EXISTING ITEMS		EXISTING DOOR AND FRAME TO REMAIN
	NEW DOOR AND FRAME		DEMO ITEMS



① EXISTING NORTH SUITE
 3/8" = 1'-0"