

PLAT SHOWING A DIVISION SURVEY OF 751,582 ACRE
 IN NUMEROUS TRACTS, BEING THE CHARLOTTE A. B
 et. vir. AND THOMAS E. SEEKATZ LANDS, SITUATED 1
 SEVENTEEN MILES N 48° E OF THE CITY OF HONDO,
 MEDINA LAKE IN MEDINA COUNTY, TEXAS.

HIGH MOUNTAIN RANCH
 VOL. PLAT RECORDS
 277-280

Exhibit A

NOTE: BASIS OF BEI
 BEARING OF I
 ALONG EAST OF
 OF 803.03 A;
 IN VOL. 184;
 RECORDS, BE;
 AS FOUND ON

TO I
 F.M.
 NORT

KOCH & KOCH LAND SURVEYORS, INC.
P.O. BOX 246 707 FM 1796 D'HANIS, TEXAS 78850
Office: 830-363-7331 Fax: 830-363-7441

11.402 ACRE TRACT

THE STATE OF TEXAS)
COUNTY OF MEDINA)

Field Notes of a perimeter survey of an 11.402 acre tract of land,
made for Thomas E. Seekatz.

Said 11.402 acre tract of land lying and being situated south of Medina Lake, in Medina County, Texas; about seventeen miles N 48° E of the City of Hondo, the County Seat; all within Sur. No. 106, William McMasters, Original Grantee, Abst. No. 1306. Said 11.402 acre tract of land being a middle portion of a 397.439 acre tract, as conveyed to Thomas E. Seekatz, by Charlotte A. Burell, et. vir., by Deed of Partition dated March 17, 1995, and recorded in Vol. 241, Pages 919-929, of the Official Public Records of said Medina County. Said 11.402 acre tract of land being bounded on the west by the Thomas E. Seekatz 316.552 acre tract (west portion of said Seekatz 397.439 acre tract); on the north, from west to east, by the Thomas E. Seekatz 30.479 acre tract (a north middle portion of said 397.439 acre tract), and the Curtis and Staci Boehme 6.000 acre tract (a middle east portion of said 397.439 acre tract); on the upper east by the southwest R.O.W. line of County Road No. 2615; on the upper south and lower east by the Thomas E. Seekatz 11.003 acre tract (this date surveyed — a south middle portion of said Seekatz 397.439 acre tract); and on the lower south by the High Mountain Ranch Subdivision, as recorded in Vol. 7, Pages 277-280, of the Plat Records of said Medina County. Said 11.402 acre tract of land being more fully described by metes and bounds, as follows:

BEGINNING at a 5/8" Steel Pin set in fence, in the north line of Lot 12 of said High Mountain Ranch Subdivision, the southeast side of said Seekatz 397.439 acre tract; at the S.W. corner of said Seekatz 11.003 acre tract, for the S.S.E. corner of this tract; said 5/8" Steel Pin being distant 3440.66 ft. S 65° 17' 18" W (generally along, but not necessarily with, said property line) of another 5/8" Steel Pin set in the southwest R.O.W. line of said County Road No. 2615, at the N.E. corner of Lot 1 of said High Mountain Ranch Subdivision, the E.S.E. corner of said Seekatz 397.439 acre tract; with said beginning 5/8" Steel Pin also being distant 5000.38 ft. N 83° 04' 14" E of the S.W. corner of said Sur. No. 106, the N.W. corner of Sur. No. 105, Alexander Reyes, in the east line of Sur. No. 200, Chas. W. Gilliam;

THENCE with fence, and the north sides of Lots 12 through 14, inclusive, of said High Mountain Ranch Subdivision; along the southeast side of said Seekatz 397.439 acre tract, and the lower south side of this tract, S 66° 24' 15" W 475.25 ft. to a 12" Cedar tree fence corner, for corner; and S 68° 56' 26" W 223.23 ft. to a cedar fence corner post found in concrete, 5.62 ft. N 65° 00' 16" E (with fence and said property line) of the N.W. corner of said Lot 14, at an angle point in the southeast side of said Seekatz 397.439 acre tract, an angle point in the north side of said Lot 14 of said Subdivision; for the E.S.E. corner of said Seekatz 316.552 acre tract, and the S.W. corner of this tract;

THENCE leaving fence, the northwest side of said High Mountain Ranch Subdivision, and the southeast side of said Seekatz 397.439 acre tract; and with the east side of said Seekatz 316.552 acre tract, along the west side of this tract, N 29° 36' 26" W, unfenced, with dozed and staked line, 480.10 ft. to a 5/8" Steel Pin set in an open area, at the S.W. corner of said Seekatz 30.479 acre tract, an angle point in the east side of said Seekatz 316.552 acre tract, for the N.W. corner of this tract;

EXHIBIT "A"

Cont. Page 2 of 2, Thomas E. Seekatz - 11.402 Acre Tract.

THENCE leaving the east side of said Seekatz 316.552 acre tract; and with the lower south line of said Seekatz 30.479 acre tract and the south line of said Boehme 6.000 acre tract, respectively; along the north side of this tract, N 60° 56' 34" E, unfenced, with dozed and staked line, at 818.48 ft. pass a 5/8" Steel Pin set on line at the S.S.E./S.W. corner of said Seekatz/Boehme tracts; total 1403.90 ft. to a 5/8" Steel Pin set at a fence corner post, in the southwest R.O.W. line of said County Road No. 2615, at an angle point in the northeast side of said Seekatz 397.439 acre tract; for the S.E. corner of said Boehme 6.000 acre tract, and the N.E. corner of this tract;

THENCE with fence and the southwest R.O.W. line of said County Road No. 2615, along a northeast line of said Seekatz 397.439 acre tract, and the upper east/northeast side of this tract, S 69° 34' 59" E 217.19 ft. to a 5/8" Steel Pin set at a fence corner post, at an angle point in the north side of said Seekatz 11.003 acre tract, for the E.S.E. corner of this tract;

THENCE leaving fence, the southwest R.O.W. line of said County Road No. 2615, and the easternmost north side of said Seekatz 397.439 acre tract; and with the north and west lines of said Seekatz 11.003 acre tract, along the upper south and lower east sides of this tract, unfenced, with dozed and staked lines, S 60° 56' 34" W 818.49 ft. to a 5/8" Steel Pin set at the N.W. corner of said 11.003 acre tract, for corner, and S 25° 00' 00" E 392.27 ft. to the place of BEGINNING:

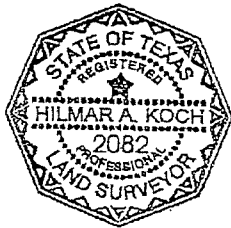
NOTE: Bearings noted herein are true bearings based on the record bearing of S 65° 25' 00" W along the east portion of the north line of a 383.03 acre tract, as recorded in Vol. 184, Pages 292-293, of the Deed Records of said Medina County, between original corners as found on the ground.

Surveyed: September 2, 1994 - January 10, 1995; December 16, 2004; and October 6 - 10, 2005

Field Crew Personnel: Spencer J. Burrell
Michael J. Koch

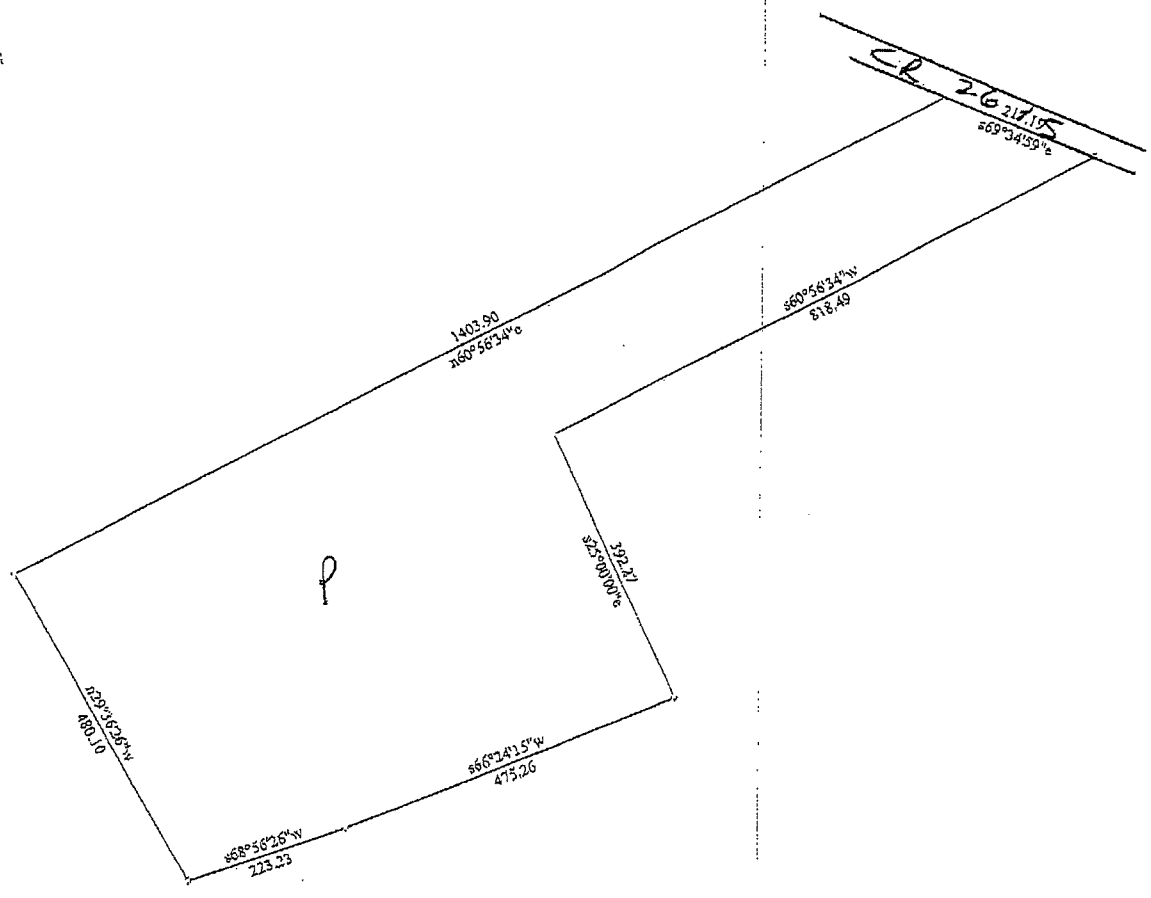
THE STATE OF TEXAS)
COUNTY OF MEDINA)

I, Hilmar A. Koch, a Registered Professional Land Surveyor of the State of Texas, do hereby state that the foregoing Field Notes description and accompanying plat correctly represent an actual survey made under my supervision, on the ground, on the dates given.



Hilmar A. Koch
Registered Professional
Land Surveyor No. 2082

EXHIBIT "A"



Title: White, 11.402 acres, Medina County		Date: 03-05-2007
Scale: 1 inch = 200 feet	File:	
Tract 1: 11.402 Acres: 496674 Sq Feet: Closure = s84.3300w 0.02 Feet: Precision = 1/262307: Perimeter = 4010 Feet		
001=s66.2415w 475.26	004=n60.5634e 1403.90	007=s25.0000e 392.27
002=s68.5626w 223.23	005=s69.3459e 217.19	
003=n29.3626w 480.10	006=s60.5634w 818.49	