

FOR LEASE

WAREHOUSE/FLEX SPACE BUILDING



525 S NOLEN DR, SOUTHLAKE, TX 76092



PROPERTY HIGHLIGHTS

- ± 4,429 SF
- Warehouse/Flex Space
- Grade Level Door
- 13' 7" Clear Height
- 2nd Generation
- 100% HVAC
- Building Signage
- I-1 Zoning (Light Industrial)
- Easy access to major Highways & DFW Int'l Airport
- Located near Nolen Drive & Southlake Blvd

LEASE RATE CALL FOR PRICING



CONTACT INFORMATION

LON LLOYD, CCIM

Office: 817.488.4333
Cell: 817.528.0377
lon@championsdfw.com

GARY PRICE

Office: 817.433.4888
Cell: 817.437.0320
gary@championsdfw.com

JIM KELLEY

Office: 817.488.4333
Cell: 817.909.7875
jim@championsdfw.com

Champions DFW Commercial Realty

1725 E Southlake Blvd, Suite 100, Southlake, TX 76092

©2023 Champions DFW Commercial Realty LLC.

All rights reserved. The information contained herein was obtained from sources believed to be reliable. It is subject to verification. The presentation of this property is submitted subject to errors, omissions, change of price or conditions, prior to sale or lease, or withdrawal without notice

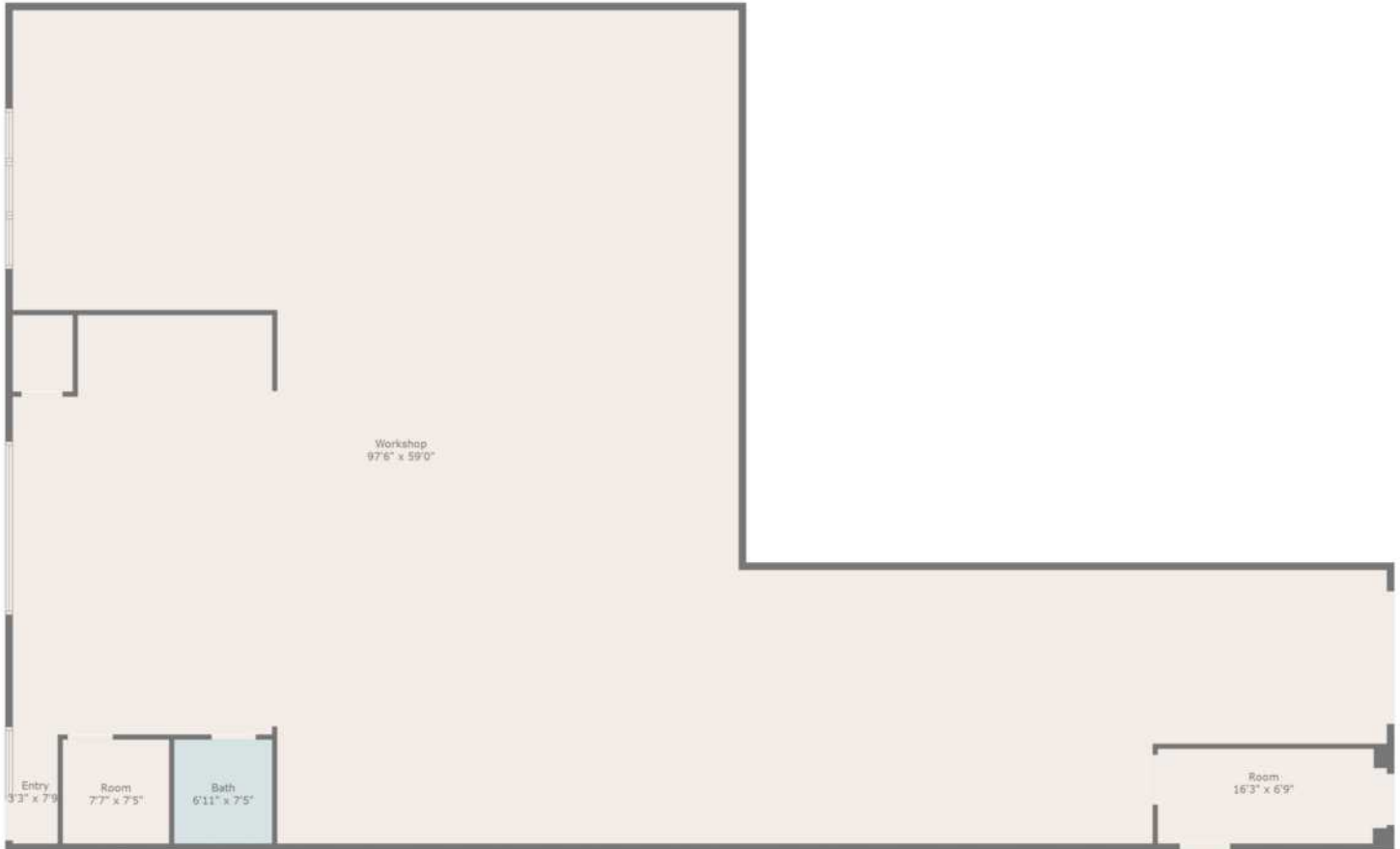
FOR LEASE

WAREHOUSE/FLEX SPACE BUILDING



525 S NOLEN DR, SOUTHLAKE, TX 76092

FLOOR PLAN



Champions DFW Commercial Realty

1725 E Southlake Blvd, Suite 100, Southlake, TX 76092

©2023 Champions DFW Commercial Realty LLC.

All rights reserved. The information contained herein was obtained from sources believed to be reliable. It is subject to verification. The presentation of this property is submitted subject to errors, omissions, change of price or conditions, prior to sale or lease, or withdrawal without notice

FOR LEASE

WAREHOUSE/FLEX SPACE BUILDING



525 S NOLEN DR, SOUTHLAKE, TX 76092

LEASE SPACES

LEASE INFORMATION

Lease Type:	NNN	Lease Term:	Negotiable
Total Space:	4,429 SF	Lease Rate:	Call for Pricing

AVAILABLE SPACES

SUITE	TENANT	SIZE (SF)	LEASE TYPE	LEASE RATE	
Suite 200 A	Available	4,429 SF	NNN	Call for Pricing	-

Champions DFW Commercial Realty

1725 E Southlake Blvd, Suite 100, Southlake, TX 76092

©2023 Champions DFW Commercial Realty LLC.

All rights reserved. The information contained herein was obtained from sources believed to be reliable. It is subject to verification. The presentation of this property is submitted subject to errors, omissions, change of price or conditions, prior to sale or lease, or withdrawal without notice

FOR LEASE
WAREHOUSE/FLEX SPACE BUILDING



525 S NOLEN DR, SOUTHLAKE, TX 76092

EXTERIOR PHOTOS



Champions DFW Commercial Realty

1725 E Southlake Blvd, Suite 100, Southlake, TX 76092

©2023 Champions DFW Commercial Realty LLC.

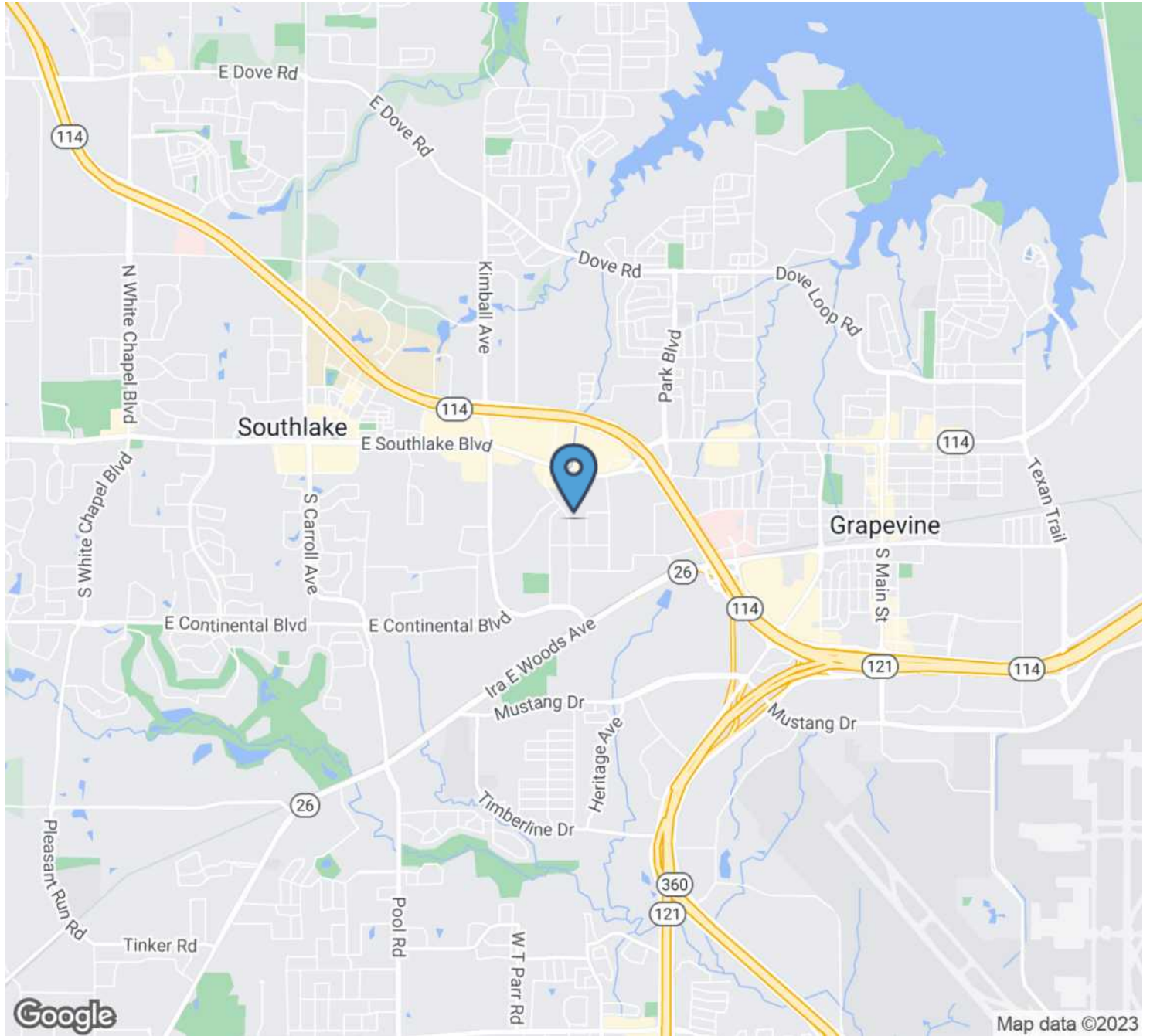
All rights reserved. The information contained herein was obtained from sources believed to be reliable. It is subject to verification. The presentation of this property is submitted subject to errors, omissions, change of price or conditions, prior to sale or lease, or withdrawal without notice

FOR LEASE WAREHOUSE/FLEX SPACE BUILDING



525 S NOLEN DR, SOUTHLAKE, TX 76092

LOCATION MAP



Champions DFW Commercial Realty

1725 E Southlake Blvd, Suite 100, Southlake, TX 76092

©2023 Champions DFW Commercial Realty LLC.

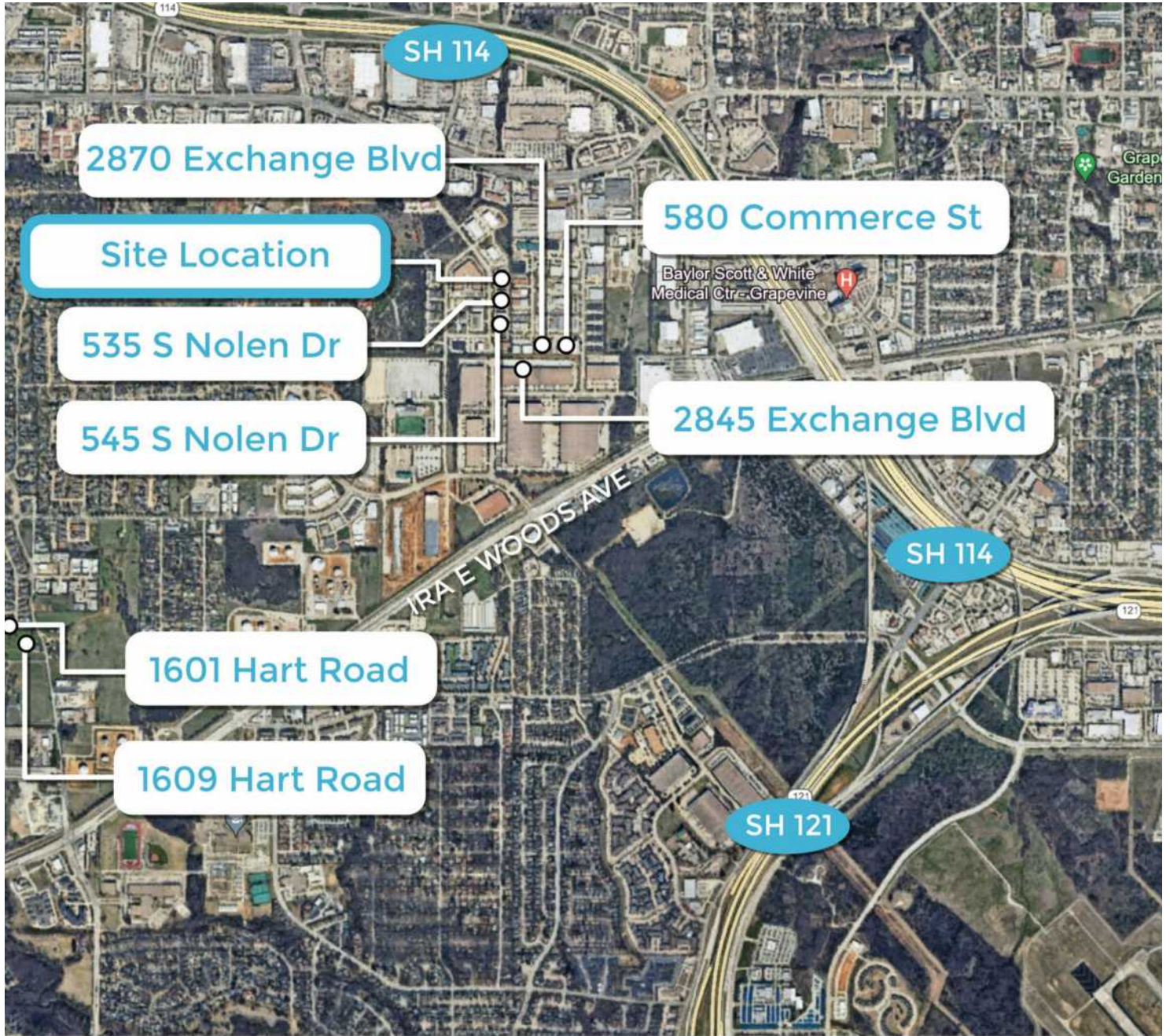
All rights reserved. The information contained herein was obtained from sources believed to be reliable. It is subject to verification. The presentation of this property is submitted subject to errors, omissions, change of price or conditions, prior to sale or lease, or withdrawal without notice.

FOR LEASE WAREHOUSE/FLEX SPACE BUILDING



525 S NOLEN DR, SOUTHLAKE, TX 76092

AREA LOCATION



Champions DFW Commercial Realty

1725 E Southlake Blvd, Suite 100, Southlake, TX 76092

©2023 Champions DFW Commercial Realty LLC.

All rights reserved. The information contained herein was obtained from sources believed to be reliable. It is subject to verification. The presentation of this property is submitted subject to errors, omissions, change of price or conditions, prior to sale or lease, or withdrawal without notice.

FOR LEASE WAREHOUSE/FLEX SPACE BUILDING



525 S NOLEN DR, SOUTHLAKE, TX 76092

DEMOGRAPHICS MAP & REPORT



POPULATION	1 MILE	5 MILES	10 MILES
Total Population	4,831	128,541	792,766
Average Age	35.3	41.0	38.0
Average Age (Male)	31.5	39.2	36.7
Average Age (Female)	39.1	42.1	38.7

HOUSEHOLDS & INCOME	1 MILE	5 MILES	10 MILES
Total Households	1,839	47,886	307,477
# of Persons per HH	2.6	2.7	2.6
Average HH Income	\$125,785	\$167,661	\$114,799
Average House Value	\$379,916	\$469,864	\$289,856

* Demographic data derived from 2020 ACS - US Census

Champions DFW Commercial Realty

1725 E Southlake Blvd, Suite 100, Southlake, TX 76092

©2023 Champions DFW Commercial Realty LLC.

All rights reserved. The information contained herein was obtained from sources believed to be reliable. It is subject to verification. The presentation of this property is submitted subject to errors, omissions, change of price or conditions, prior to sale or lease, or withdrawal without notice

FOR LEASE
WAREHOUSE/FLEX SPACE BUILDING



525 S NOLEN DR, SOUTHLAKE, TX 76092

BROKER CONTACTS



LON LLOYD, CCIM

Director of Investment Services & Capital Markets

Cell: 817.528.0377
lon@championsdfw.com



GARY PRICE

Senior Associate

Cell: 817.437.0320
gary@championsdfw.com

Champions DFW Commercial Realty

1725 E Southlake Blvd, Suite 100, Southlake, TX 76092

©2023 Champions DFW Commercial Realty LLC.

All rights reserved. The information contained herein was obtained from sources believed to be reliable. It is subject to verification. The presentation of this property is submitted subject to errors, omissions, change of price or conditions, prior to sale or lease, or withdrawal without notice

FOR LEASE
WAREHOUSE/FLEX SPACE BUILDING



525 S NOLEN DR, SOUTHLAKE, TX 76092

BROKER CONTACTS



JIM KELLEY

Principal/Broker

Cell: 817.909.7875

jim@championsdfw.com

Champions DFW Commercial Realty

1725 E Southlake Blvd, Suite 100, Southlake, TX 76092

©2023 Champions DFW Commercial Realty LLC.

All rights reserved. The information contained herein was obtained from sources believed to be reliable. It is subject to verification. The presentation of this property is submitted subject to errors, omissions, change of price or conditions, prior to sale or lease, or withdrawal without notice.



Information About Brokerage Services

Texas law requires all real estate licensees to give the following information about brokerage services to prospective buyers, tenants, sellers and landlords.

TYPES OF REAL ESTATE LICENSE HOLDERS:

- **A BROKER** is responsible for all brokerage activities, including acts performed by sales agents sponsored by the broker.
- **A SALES AGENT** must be sponsored by a broker and works with clients on behalf of the broker.

A BROKER'S MINIMUM DUTIES REQUIRED BY LAW (A client is the person or party that the broker represents):

- Put the interests of the client above all others, including the broker's own interests;
- Inform the client of any material information about the property or transaction received by the broker;
- Answer the client's questions and present any offer to or counter-offer from the client; and
- Treat all parties to a real estate transaction honestly and fairly.

A LICENSE HOLDER CAN REPRESENT A PARTY IN A REAL ESTATE TRANSACTION:

AS AGENT FOR OWNER (SELLER/LANDLORD): The broker becomes the property owner's agent through an agreement with the owner, usually in a written listing to sell or property management agreement. An owner's agent must perform the broker's minimum duties above and must inform the owner of any material information about the property or transaction known by the agent, including information disclosed to the agent or subagent by the buyer or buyer's agent.

AS AGENT FOR BUYER/TENANT: The broker becomes the buyer/tenant's agent by agreeing to represent the buyer, usually through a written representation agreement. A buyer's agent must perform the broker's minimum duties above and must inform the buyer of any material information about the property or transaction known by the agent, including information disclosed to the agent by the seller or seller's agent.

AS AGENT FOR BOTH - INTERMEDIARY: To act as an intermediary between the parties the broker must first obtain the written agreement of each party to the transaction. The written agreement must state who will pay the broker and, in conspicuous bold or underlined print, set forth the broker's obligations as an intermediary. A broker who acts as an intermediary:

- Must treat all parties to the transaction impartially and fairly;
- May, with the parties' written consent, appoint a different license holder associated with the broker to each party (owner and buyer) to communicate with, provide opinions and advice to, and carry out the instructions of each party to the transaction.
- Must not, unless specifically authorized in writing to do so by the party, disclose:
 - that the owner will accept a price less than the written asking price;
 - that the buyer/tenant will pay a price greater than the price submitted in a written offer; and
 - any confidential information or any other information that a party specifically instructs the broker in writing not to disclose, unless required to do so by law.

AS SUBAGENT: A license holder acts as a subagent when aiding a buyer in a transaction without an agreement to represent the buyer. A subagent can assist the buyer but does not represent the buyer and must place the interests of the owner first.

TO AVOID DISPUTES, ALL AGREEMENTS BETWEEN YOU AND A BROKER SHOULD BE IN WRITING AND CLEARLY ESTABLISH:

- The broker's duties and responsibilities to you, and your obligations under the representation agreement.
- Who will pay the broker for services provided to you, when payment will be made and how the payment will be calculated.

LICENSE HOLDER CONTACT INFORMATION: This notice is being provided for information purposes. It does not create an obligation for you to use the broker's services. Please acknowledge receipt of this notice below and retain a copy for your records.

Champions DFW Commercial Realty, LLC	584733		
Licensed Broker /Broker Firm Name or Primary Assumed Business Name	License No.	Email	Phone
Jim Kelley	545842	jim@championsfdw.com	
Designated Broker of Firm	License No.	Email	Phone
Licensed Supervisor of Sales Agent/ Associate	License No.	Email	Phone
Lon Lloyd	416393	lon@championsfdw.com	(817)488-4333
Sales Agent/Associate's Name	License No.	Email	Phone

Buyer/Tenant/Seller/Landlord Initials

Date

Regulated by the Texas Real Estate Commission

Information available at www.trec.texas.gov

TXR-2501

IABS 1-0 Date

Champions DFW Commercial Realty, LLC, 1725 E. Southlake Blvd., Suite 100 Southlake, TX 76092
Jim Kelley

Phone: 817-488-4333 Fax: 817-488-4344
Produced with Lone Wolf Transactions (zipForm Edition) 717 N Harwood St, Suite 2200, Dallas, TX 75201 www.lwolf.com

IBS