



472 FULTON ST.
DOWNTOWN BROOKLYN

ONE WAY

SUPREME PIZZA
929-773-3690
FULTON AVE

\$1.50 Slice

2 Topping Slice PIZZA \$6.50

\$1.50 Slice

FULTON SALON
HAIR
499-6476

FULTON SALON
and Spa
472
499-6476

boost mobile
BURGERS
HOT DOGS
SALADS
SMOOTHIES
FRESH JUICES
ICE CREAM

boost mobile

RETAIL FOR LEASE

FLOWER JEWELRY
FLOWER JEWELRY
347-935-9486



472 Fulton St. Brooklyn, NY

RETAIL FOR LEASE

LOCATION

472 Fulton St. Brooklyn, NY
SW Corner of Elm Place, Downtown Brooklyn

SIZE

Space A: 850 SF
Space B: 450 SF
Space C: 1,300 SF
Combinations of 1,300 SF | 1,750 SF | 2,600 SF

FRONTAGE

Space A: 12 Feet
Space B: 8 Feet
Space C: 16 Feet
Entire Lot: 35' x 75'

RENT Upon request

HIGHLIGHTS

- Brooklyn's #1 pedestrian corridor
- Foot traffic estimated at 100,000-125,000/day
- 13 Subway stations in the immediate area
- 40 Million + riders a year
- Signage opportunity on floors above
- Opportunity to redevelop entire building
- Existing gas line

NEIGHBORS

H&M, Target, Five Below, Trader Joe's,
JD Sports, Footlocker, Shake Shack,
Pandora, Primark, City Point, Dekalb Market

TRANSPORTATION

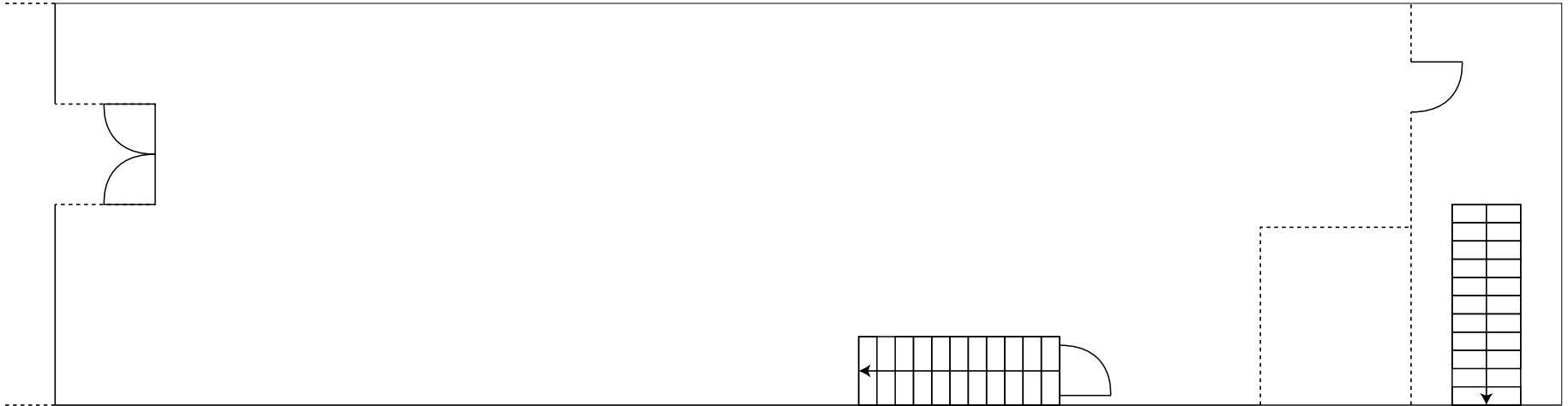
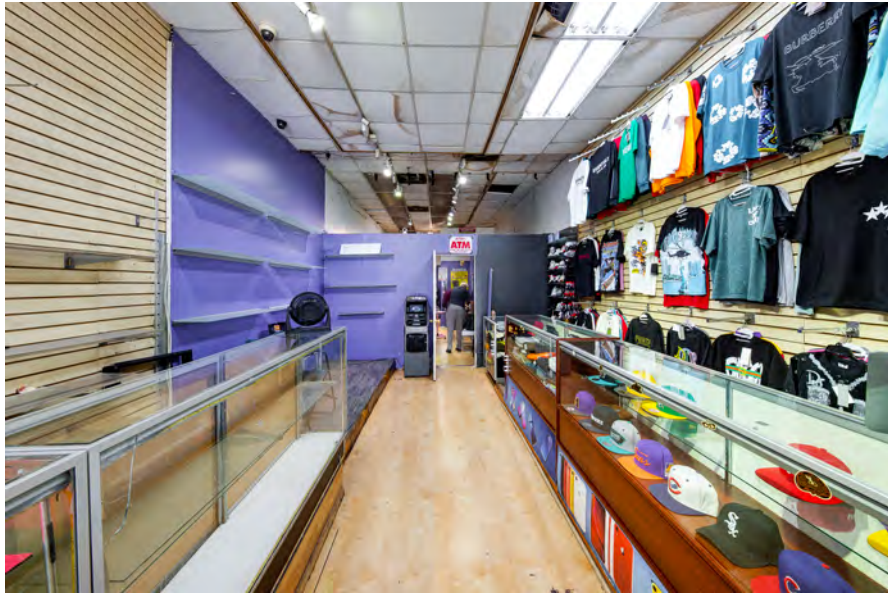
2 3 4 5 A C F G J R Z



JOSEPH HARARY 917.533.1451
JH@DeepBlueLeasing.com



472 Fulton St. Brooklyn, NY
Space C



All information is from sources deemed reliable but is subject to errors, omissions, and changes. Square footage, dimensions, and floor plans are approximate and should be independently verified. Availability and terms are subject to change without notice.



JOSEPH HARARY 917.533.1451
JH@DeepBlueLeasing.com