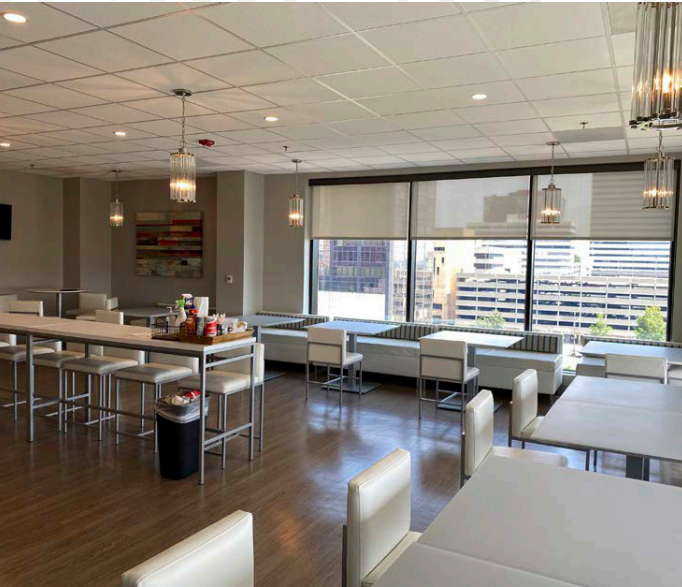




1501 MAIN

**DOWNTOWN COLUMBIA'S
CLASS-A OFFICE DESTINATION**



Steps from retail and restaurants,
1501 Main sits in the center of
Columbia's CBD.



Sophisticated new ownership
dedicated to providing an exceptional
broker and tenant experience.



Recently renovated
common area



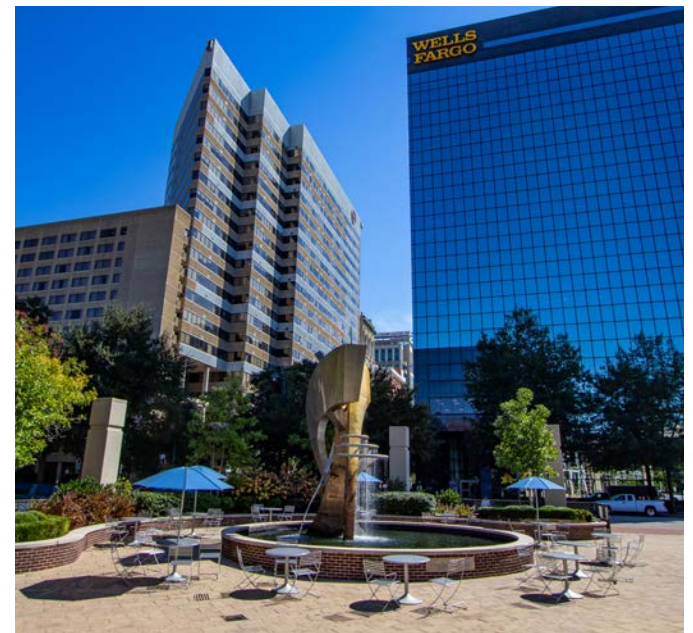
Recently renovated
24-hour fitness center



Ample parking for
tenants and guests



On-site security and
property management



Adjacent to Boyd Plaza, a recently renovated downtown park, offering outdoor seating during business hours at one of Columbia's most popular venues in the CBD.

IMPROVEMENTS TO ELEVATE YOU
AND YOUR CLIENT'S EXPERIENCE.

Common area renovated 2023

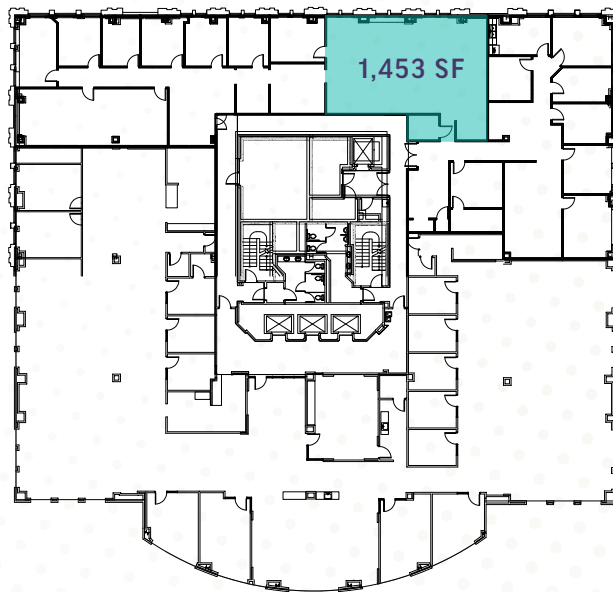


**DETAILS AND
AVAILABILITY**

Building Size: 138,909 SF
Total SF Available: 9,734 SF
Minimum SF Available: 1,453 SF
Maximum Contiguous SF Available: 8,281 SF

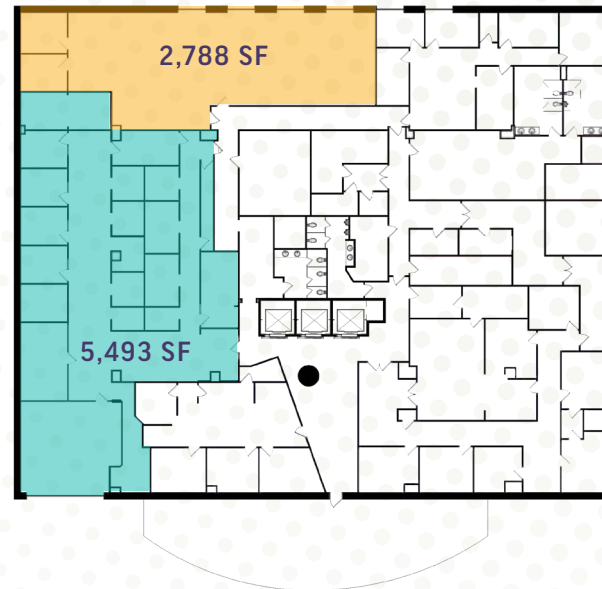
7TH FLOOR LEASE RATE: \$22.00 PSF FULL SERVICE

7TH FLOOR | 1,453 SF



GARDEN LEASE RATE: \$18.00 PSF FULL SERVICE

GARDEN LEVEL | 2,788 - 8,281 SF



CONTACT



ROGER WINN, SIOR

Founding Partner
rwinn@trinity-partners.com
803.567.1455



BRADEN SHOCKLEY, SIOR

Senior Brokerage Associate
bshockley@trinity-partners.com
803.567.1373



WILL MCGREGOR

Brokerage Associate
wmcgregor@trinity-partners.com
803.567.1912



1501 MAIN

**DOWNTOWN COLUMBIA'S
CLASS-A OFFICE DESTINATION**