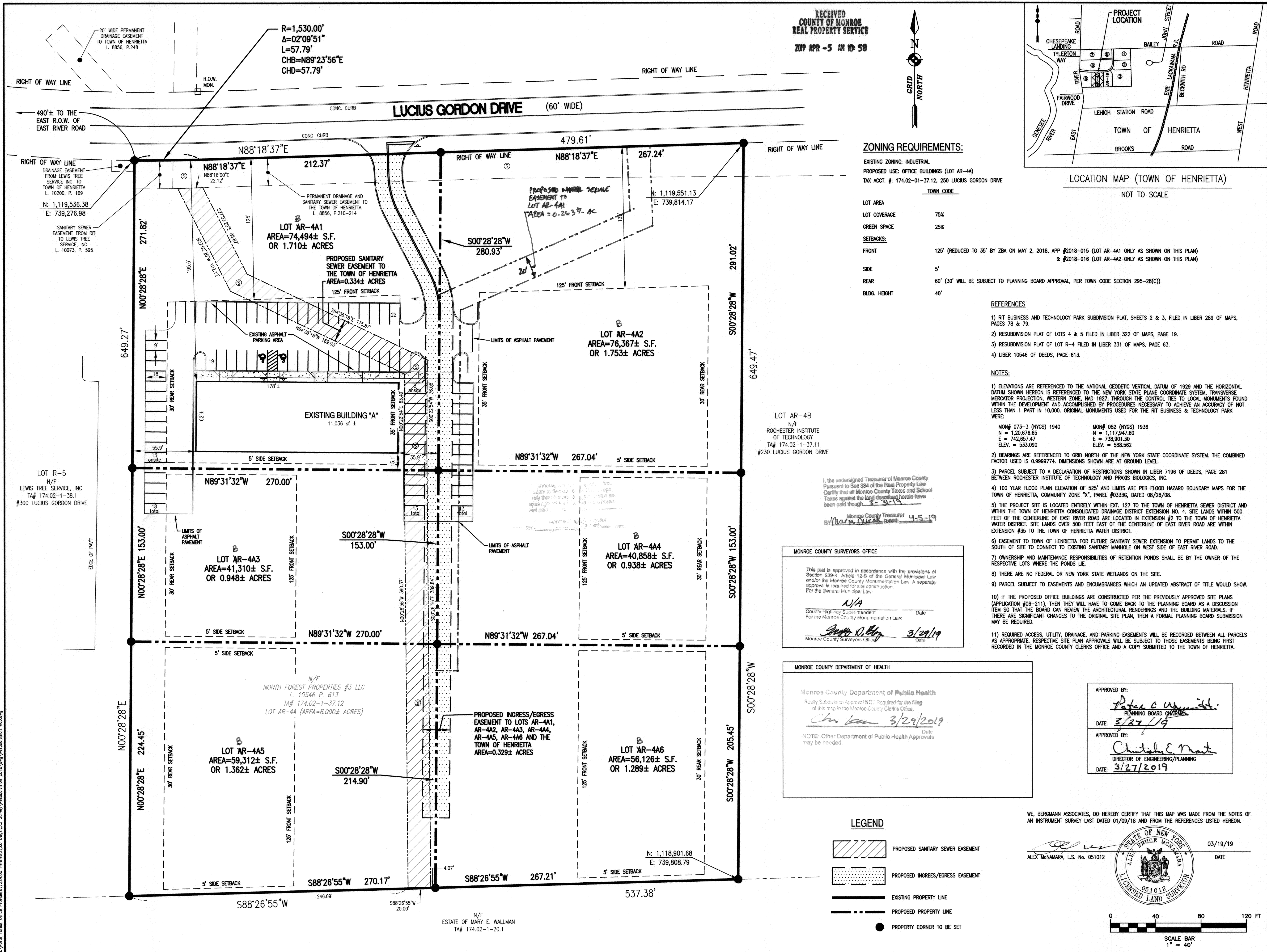


\\North Forest Office\Presidents\7224.00 Henrietta\3.0 Draw\3.0 Survey\Resubdivision 2018\Long\Resubdivision Map.dwg



East River Professional Park

RIT Business & Technology Park
250 Lucius Gordon Drive
Henrietta, New York

North Forest Office Providers

145 Sully's Trail
Suite 4
Pittsford, New York 14534
585-248-0990

BERGMANN
ARCHITECTS ENGINEERS PLANNERS

Bergmann Associates, Architects, Engineers,
Landscape Architects & Surveyors, D.P.C.
280 East Broad Street
Suite 200
Rochester, NY 14604

office: 585.232.5135
fax: 585.232.4652

www.bergmannpc.com

REVISIONS				
NO.	DATE	DESCRIPTION	REV.	CK'D
1	3/27/18	TOWN COMMENTS		
2	3/6/19	TOWN COMMENTS		
3	3/15/19	TOWN COMMENTS		

PROPERTY SITUATE IN
TOWN LOT 12, 6TH RANGE OF LOTS,
TOWNSHIP 12, RANGE 7 OF THE
PHELPS AND GORHAM PURCHASE
TOWN OF HENRIETTA, COUNTY OF MONROE
STATE OF NEW YORK

Copyright © Bergmann Associates, Architects, Engineers,
Landscape Architects & Surveyors, D.P.C.

NOTE:
Unauthorized alteration or addition to this drawing is a violation of
the New York State Education Law Article 145, Section 7209.

Project Manager:
B. BURRI

Checked By:
K. SULLIVAN

Drawn By:
C. WOOD

Date Issued:
03/08/2019

Scale:
1" = 40'

Project Number:
7224.00

**R.I.T. BUSINESS & TECHNOLOGY PARK
RESUBDIVISION
OF LOT AR-4A
(L. 331 OF MAPS, P. 63)**

RSM-01

25467