

# Kendig Square

2600 Willow Street Pike - Lancaster County, PA 17584

±2,316 SF Available for Lease



## Questions? Contact Us.

**Melissa Lippe**

MLippe@jcbarprop.com

p. 610-206-3319

c. 215-264-6964

**Rob V. Gothier, III**

RG3@jcbarprop.com

p. 717-761-7801

c. 717-712-4601

# Kendig Square

2600 Willow Street Pike - Lancaster County, PA 17584

±2,316 SF Available for Lease

## Highlights

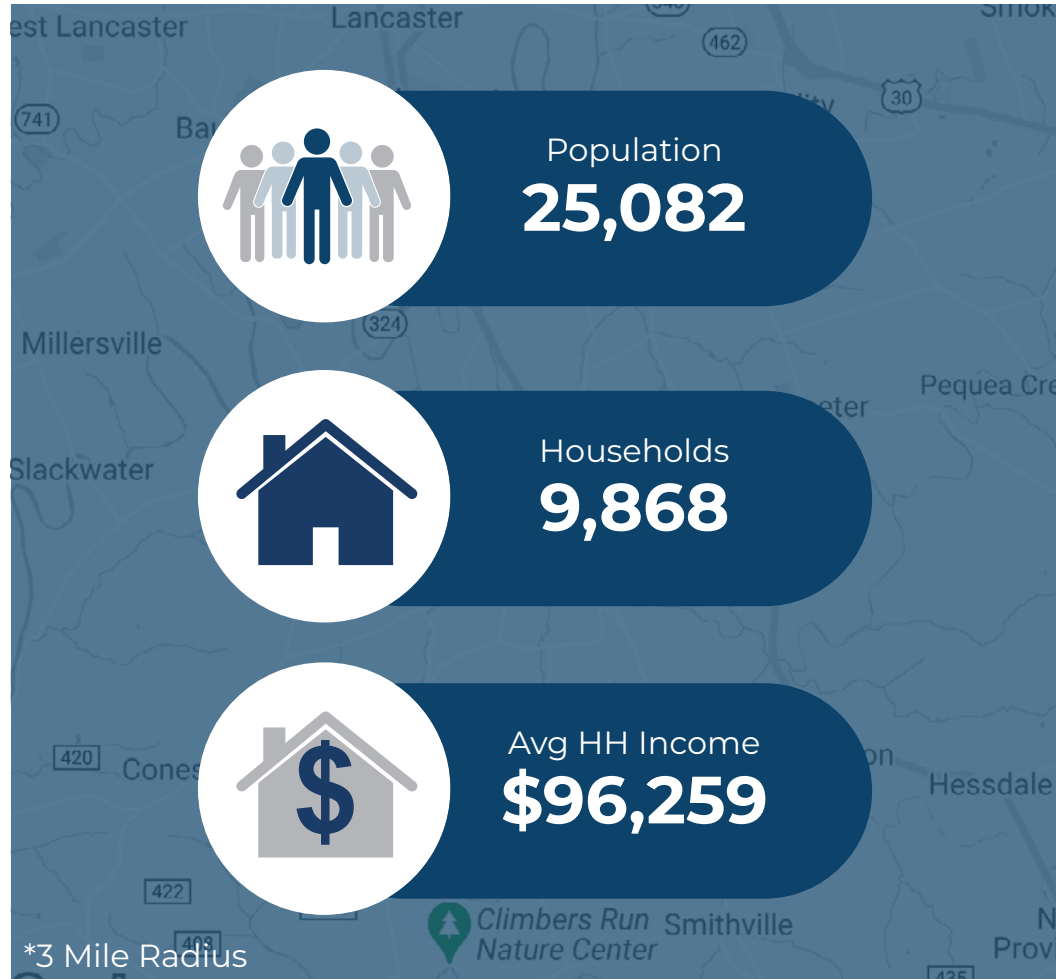
- Located in Lancaster County with 60,000 residents within a 7-mile span
- Anchored by Weis Grocery Store
- Three Pylons available
- Access from Willow Street Pike (20,026 AADT Combined) and Long Lane (15,584 AADT)
- Last remaining vacancy available with loading capabilities available
- GLA: 268,728 SF

JOIN

**weis** PET SUPPLIES PLUS **verizon**✓



Demographic	1 Mile	3 Miles	5 Miles
Population	6,906	25,082	129,076
Households	3,266	9,868	49,824
Avg HH Income	\$85,548	\$96,259	\$80,728
Daytime Employees	4,529	7,402	57,971



Questions? Contact Us.

**Melissa Lippe**  
MLippe@jcbarprop.com  
p. 610-206-3319  
c. 215-264-6964

**Rob V. Gothier, III**  
RG3@jcbarprop.com  
p. 717-761-7801  
c. 717-712-4601



# Kendig Square

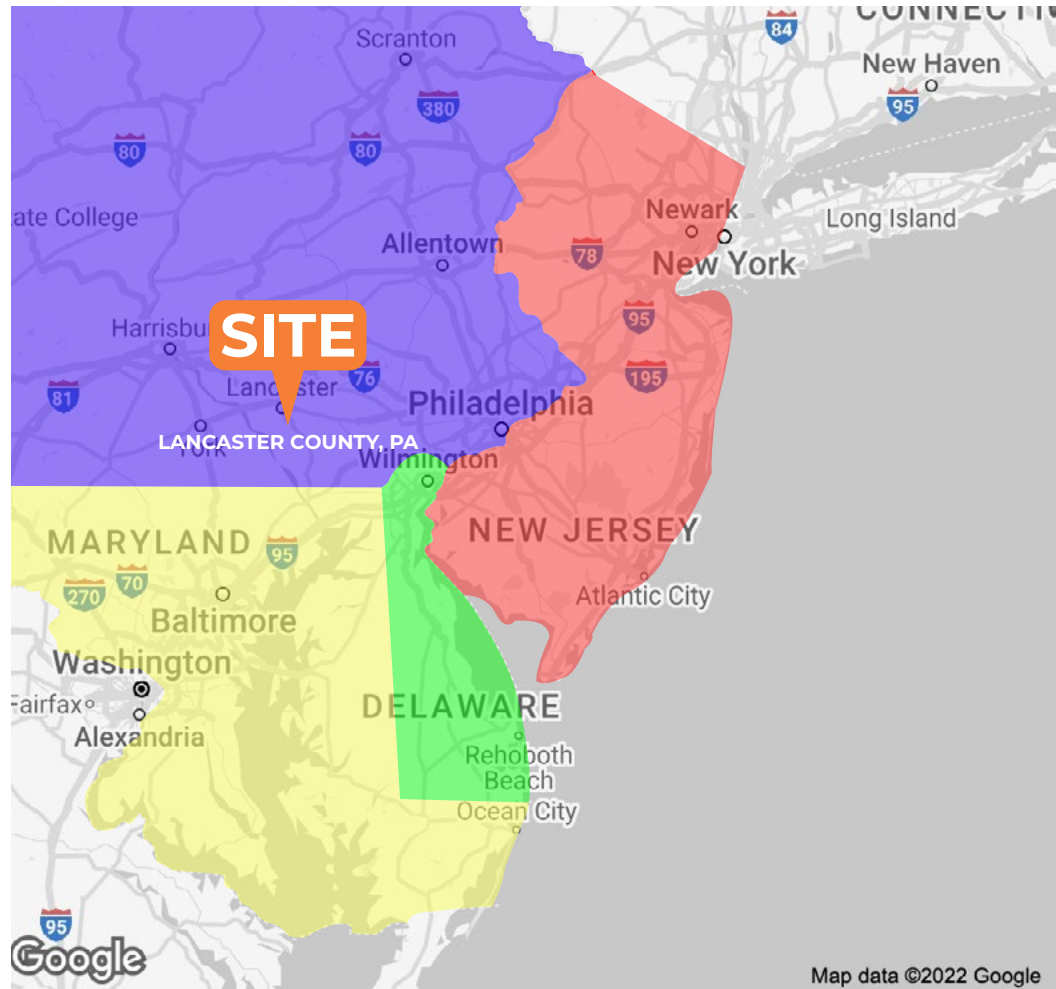
2600 Willow Street Pike - Lancaster County, PA 17584

±2,316 SF Available for Lease

## About Lancaster

The region lies along The Susquehanna River to its east, covering nearly 1,000 square miles. Tourism is a significant industry in Lancaster County, employing approximately 20,000 people. The local Amish Community, second largest Amish settlement in the world, draws large crowds annually. Lancaster County also serves as home to many Colleges and Universities – Millersville University, Franklin & Marshall College, Elizabethtown College and many others.

As of 2021, Lancaster County was home to 551,000+ residents. The County continues to experience tremendous residential and commercial development supported by improving demographic trends, further elevating the market as a premier retail destination. This is highlighted by two major mixed-use developments with total project costs in excess of \$100 million bringing new, blue-chip and highly selective retailers to the market such as Whole Foods, Wegmans and Nordstrom Rack. The Crossings at Conestoga is a \$120 million development that includes 258 Class A apartments, a 200,000 square foot, Wegmans anchored retail center and a 127-suite Marriot hotel. The recently delivered 365,000 square foot Shoppes at Belmont, features a Whole Foods and nearly 100 residential units. As demonstrated by the recent addition of best-in-class tenants, the status of Lancaster County continues to improve, and it is profiled as one of the top locations within the Philadelphia MSA.



## Questions? Contact Us.

**Melissa Lippe**  
MLippe@jcbarprop.com  
p. 610-206-3319  
c. 215-264-6964

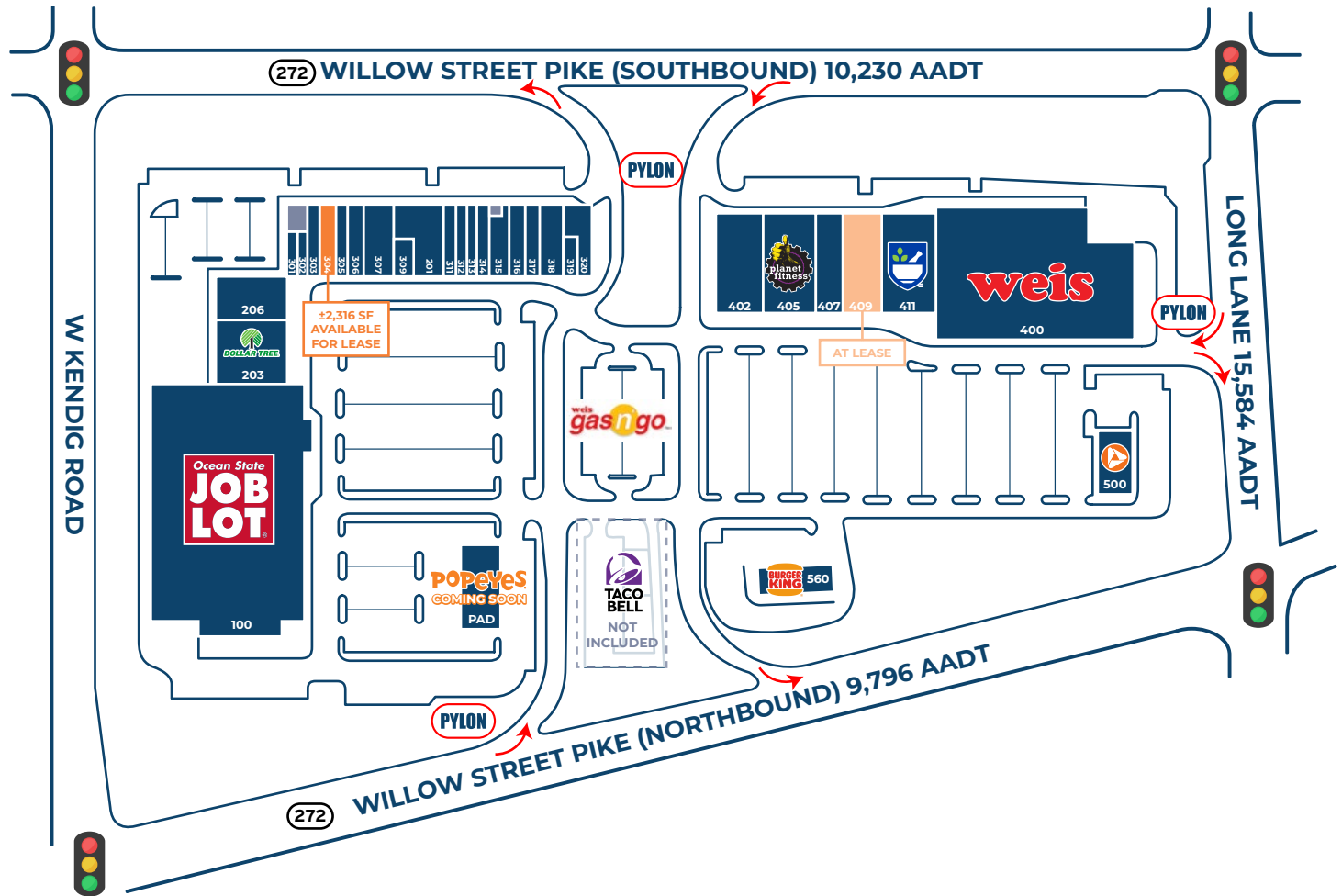
**Rob V. Gothier, III**  
RG3@jcbarprop.com  
p. 717-761-7801  
c. 717-712-4601

# Kendig Square

2600 Willow Street Pike, Willow Street (Lancaster County), PA 17584



Unit	Tenant	Square Footage
100	Ocean State Job Lot	±88,479 SF
201	Dollar General	±6,300 SF
203	Dollar Tree	±10,397 SF
206	Goodwill	±8,200 SF
301	Nails Only	±969 SF
302	Subway	±1,254 SF
303	Smooth Vape	±2,283 SF
<b>304</b>	<b>AVAILABLE</b>	<b>±2,316 SF</b>
305	Sal's Pizza	±2,428 SF
306	Golden Wall Restaurant	±1,760 SF
307	Fine Wine & Good Spirits	±5,134 SF
309	The UPS Store	±1,500 SF
311	GNC	±1,918 SF
312	Wasabi Japanese	±2,529 SF
313	Pizza Hut	±1,200 SF
314	H&R Block	±1,980 SF
315	Verizon	±3,025 SF
316	Pearle Vision	±2,132 SF
317	T-Mobile	±2,132 SF
318	Pet Supplies Plus	±4,290 SF
319	Holiday Hair	±1,200 SF
320	George's Restaurant	±4,259 SF
400	Weis	±60,284 SF
402	Horizon Cinemas	±12,375 SF
405	Planet Fitness	±13,171 SF
407	Hallmark	±4,000 SF
<b>409</b>	<b>AT LEASE</b>	<b>±8,800 SF</b>
411	Rite Aid	±10,950 SF
500	PNC Bank	±4,874 SF
560	Burger King	PAD
PAD	Popeyes (Coming Soon)	PAD
PAD	Taco Bell	PAD
	<b>Total SF</b>	<b>±268,728 SF</b>



# Site Plan

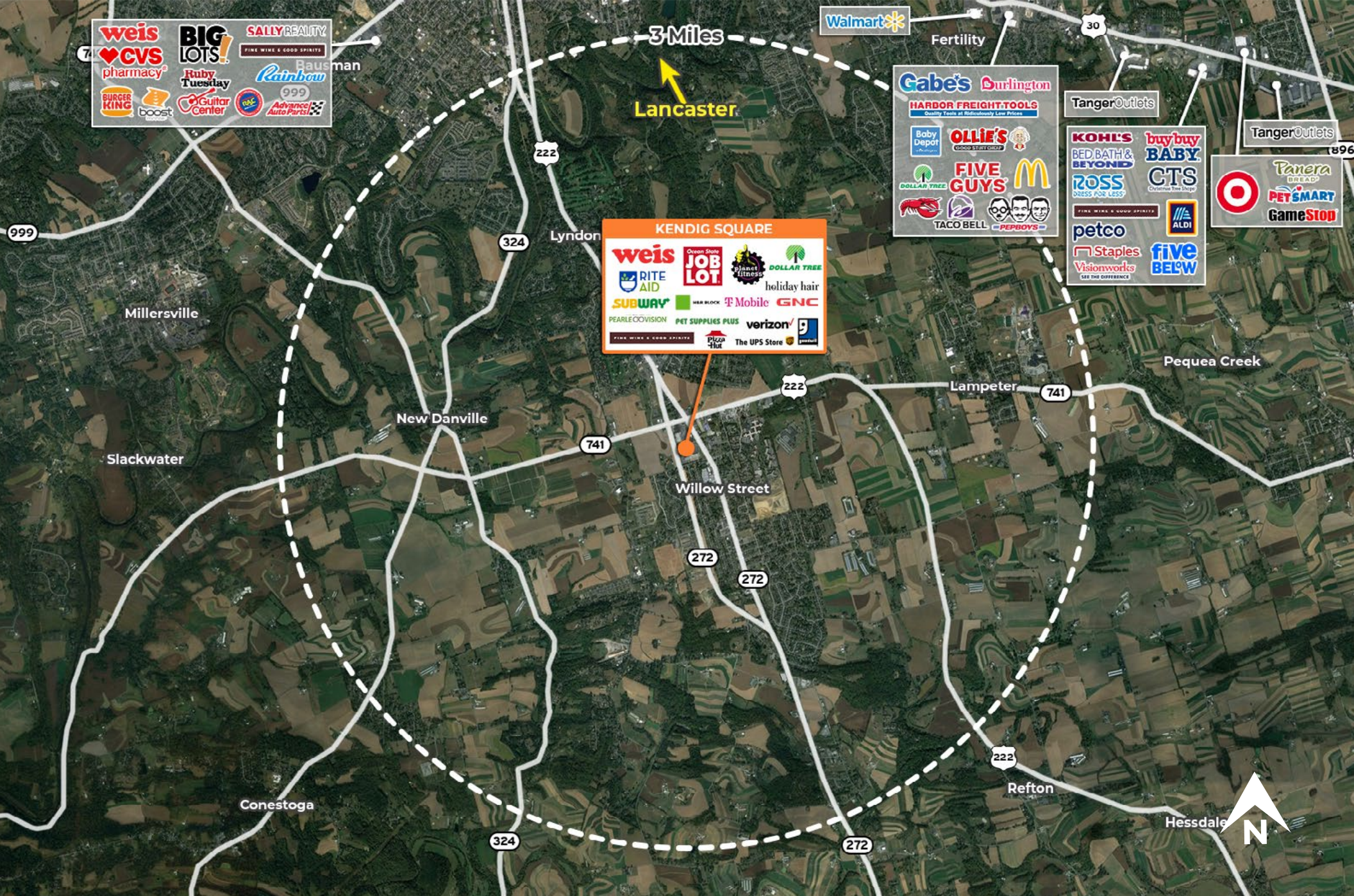




# Local Aerial

The information and images contained herein are from sources deemed reliable. However, J.C.BAR Properties, Inc. makes no representation whatsoever as to their accuracy or authenticity. Images shown may be modified for illustrative purposes. Images may be out-of-date and not current.





# Market Aerial