

FOR LEASE

PROFESSIONAL OFFICES

PAJARO CORNER

32 E. ALISAL STREET, SALINAS, CA 93901



Located at the corner of East Alisal Street and Pajaro Street, this multi-tenant office building is just east of Salinas' Main Street in the downtown commercial district.

The property was updated in recent years with new windows, flooring and paint. There is also ample on-site parking, air condition, common area restrooms, and 24/7 access.

APN:	002-232-001 & -002		
Available Suites:	#211	#212	Total
*Square Feet:	441+/-	800+/-	1,241+/-
Asking Rent:	\$1.95psf	\$1.90psf	\$1.85psf
Lease Type:	Modified gross.		

These suites feature private offices, admin areas, and can be combined to form a single office. Suite 212 is the corner suite with large windows facing both streets.

263 Lincoln Avenue
Salinas, CA 93901
(831) 422-5327
piinirealty.com



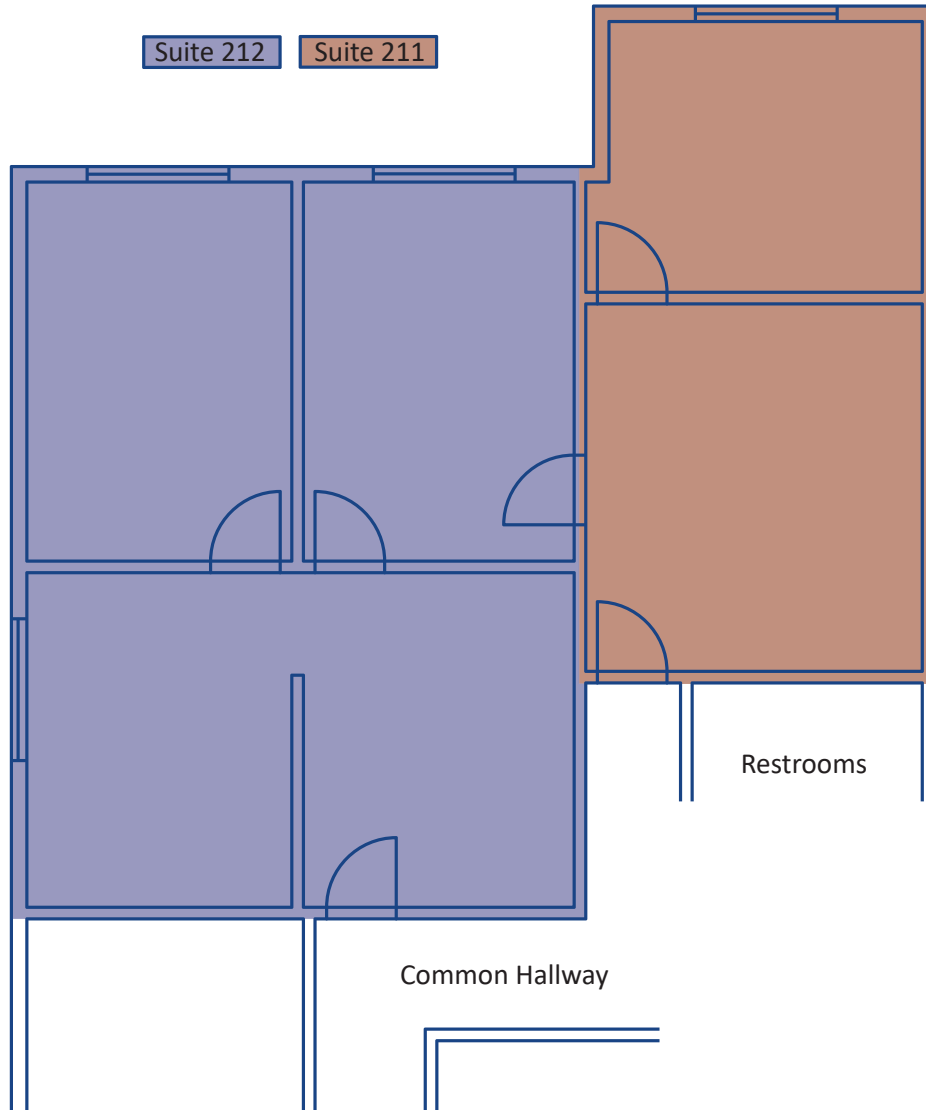
Greg Piini (x101)
Cell: (831) 596-5763
greg@piinirealty.com
DRE: 01294279

**The building areas are estimates derived from sources that are deemed reliable but are not guaranteed.*

PAJARO CORNER

PROFESSIONAL OFFICES

32 E. ALISAL STREET, SALINAS, CA 93901



263 Lincoln Avenue
Salinas, CA 93901
(831) 422-5327
piinirealty.com



Greg Piini (x101)
Cell: (831) 596-5763
greg@piinirealty.com
DRE: 01294279