

FOR LEASE CHERRY HILL MEDICAL CENTER

Join Motown Children's Surgery Center!!!



**33545 Cherry Hill Road
Westland, MI 48331**

- *First Floor Clinical Space Available, 5,563 Square Feet*
- *Second Floor Leased To Motown Children's Surgery Center*
- *Monument Signage Available*
- *Tenant Improvements Package Available*
- *Underserved Neighborhood Location*

Contact: Matthew B. Fenster, CCIM, MCR
Direct Phone: 248-263-0137
E-mail: mfenster@etkinllc.com



150 W. Second Street, Suite 200
Royal Oak, MI 48067
Phone: 248-358-0800 Fax: 248-358-2180
www.EtkinCare.com

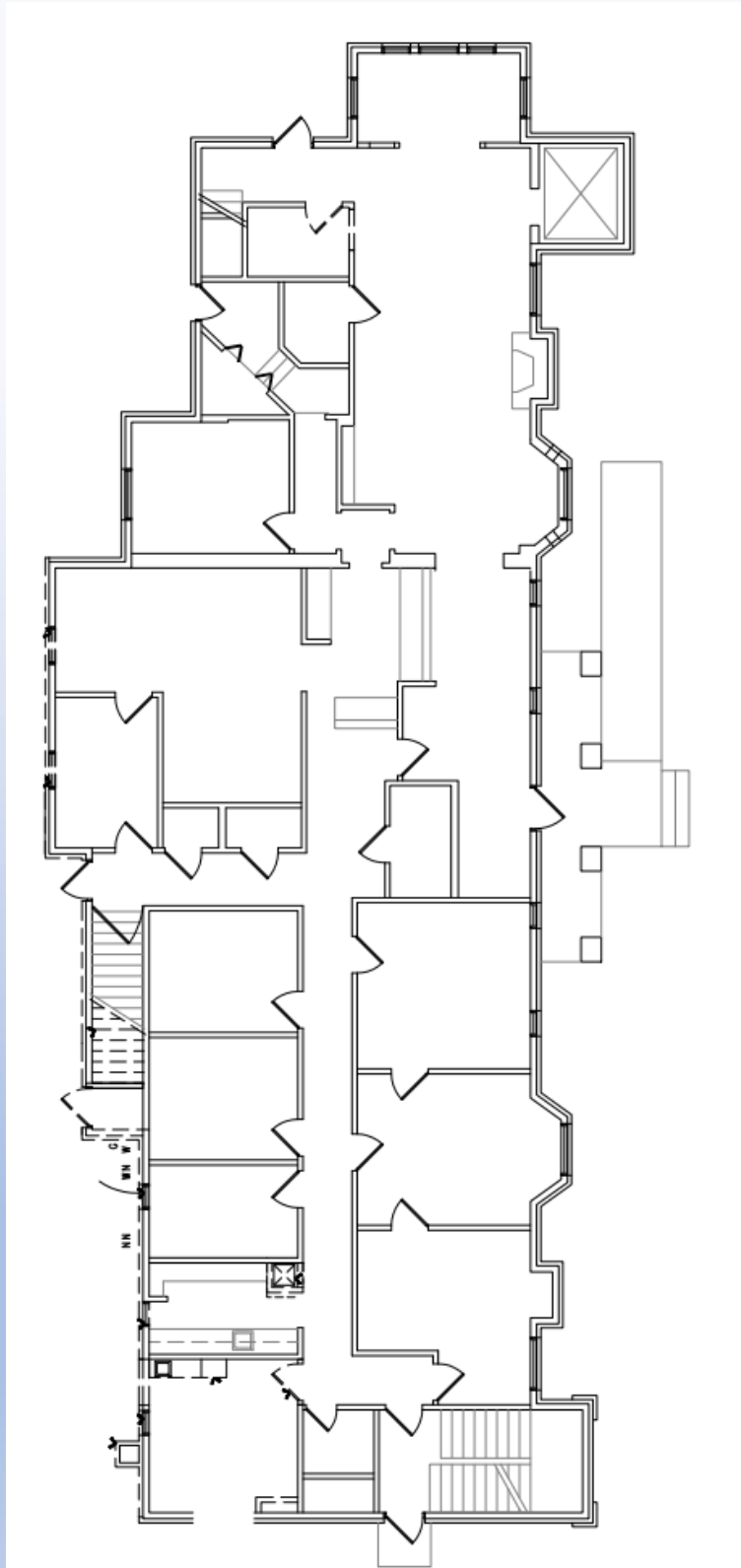


Owned By:



First Floor Plan

Approximately 5,563 r.s.f.



The information contained in this document has been obtained from sources deemed reliable. We do not, however, guarantee its accuracy. All information should be verified prior to lease.