

506 S. HURON STREET
YPSILANTI, MICHIGAN

INDUSTRIAL FOR SALE
103,548 Square Feet Available



**SIGNATURE
ASSOCIATES**
KNOW SIGNATURE | KNOW RESULTS

MANUFACTURING / DISTRIBUTION



PROPERTY FEATURES

- 103,548 square feet available
- 7,923 square feet office | 95,625 square feet hi-bay
- 24' – 27' clear height
- (1) 12' x 12' grade level door, (4) truckwells
- 4000 amps, 480 volts, 3-phase power, buss duct
- Columns and columns footings in west bay of building are prepped for a 3-ton crane
- Zoning: PMD – Production, Manufacturing, Distribution
- (4) car executive garage parking
- Men & women's shop locker rooms with showers
- Located just north of the I-94 / Huron Street Expressway Interchange
- Exit off I-94 Expressway at S. Huron Street / Entrance to I-94 Expressway via S. Hamilton Street
- Building sits on 10.81 acres with room for the expansion of the building
- Sale Price: \$9,500,000 (\$91.74/sq. ft.)



For more information, please contact:

STEVE GORDON

(248) 948 0101

sgordon@signatureassociates.com

JAY CHAVEY

(248) 948 4196

jchavey@signatureassociates.com

SIGNATURE ASSOCIATES

One Towne Square, Suite 1200

Southfield, MI 48076

www.signatureassociates.com

Information is subject to verification and no liability for errors or omissions is assumed. Price is subject to change and listing withdrawal.

103,548
Square Feet
AVAILABLE

[illegible]

SIGNATURE ASSOCIATES
One Towne Square, Suite 1200
Southfield, MI 48076
www.signatureassociates.com

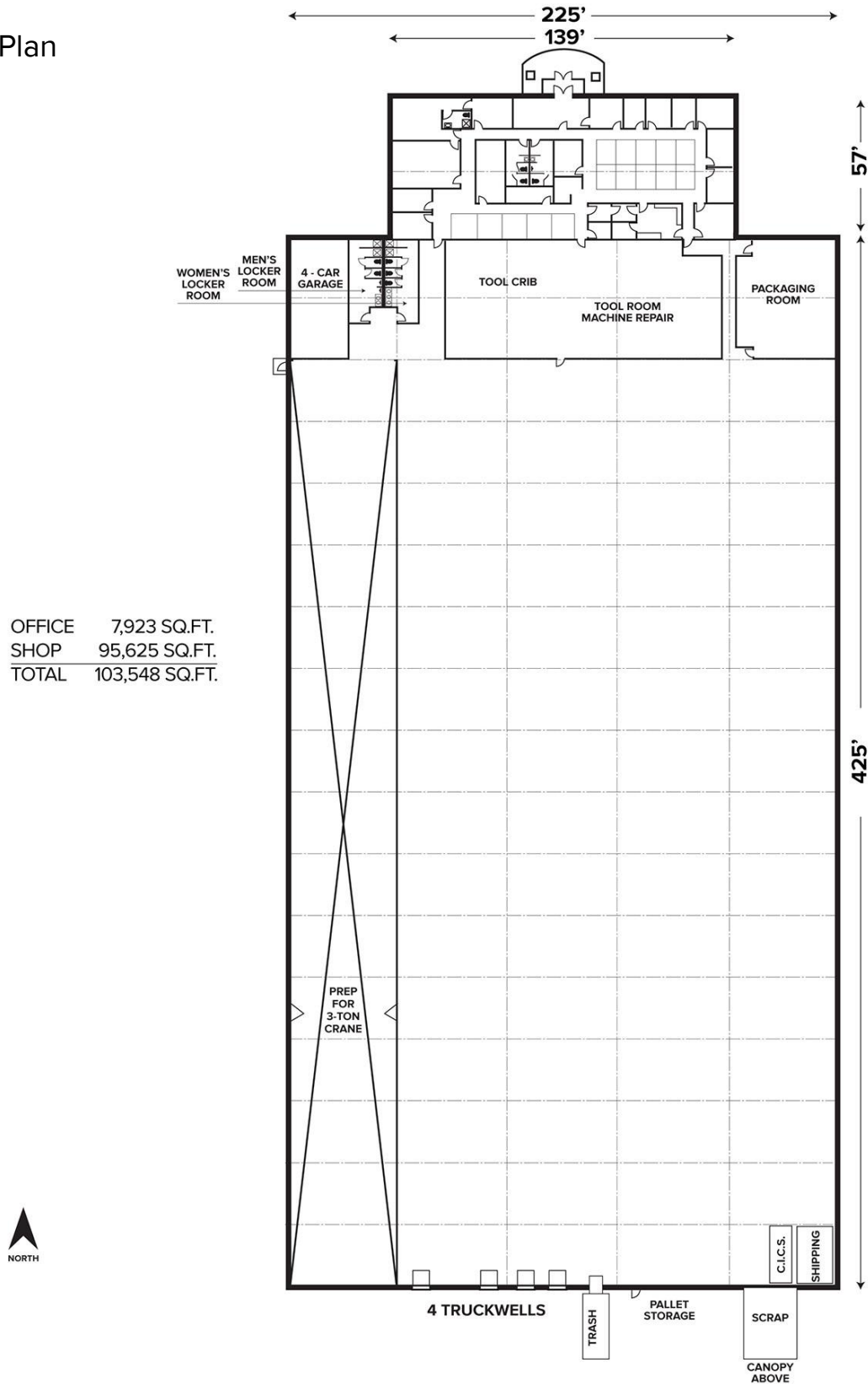
Information is subject to verification and no liability for errors or omissions is assumed. Price is subject to change and listing withdrawal.

506 S. Huron Street – Ypsilanti, Michigan

Industrial For Sale

103,548
Square Feet
AVAILABLE

Floor Plan



For more information, please contact:

STEVE GORDON
(248) 948 0101
sgordon@signatureassociates.com

JAY CHAVEY
(248) 948 4196
jchavey@signatureassociates.com

SIGNATURE ASSOCIATES
One Towne Square, Suite 1200
Southfield, MI 48076
www.signatureassociates.com

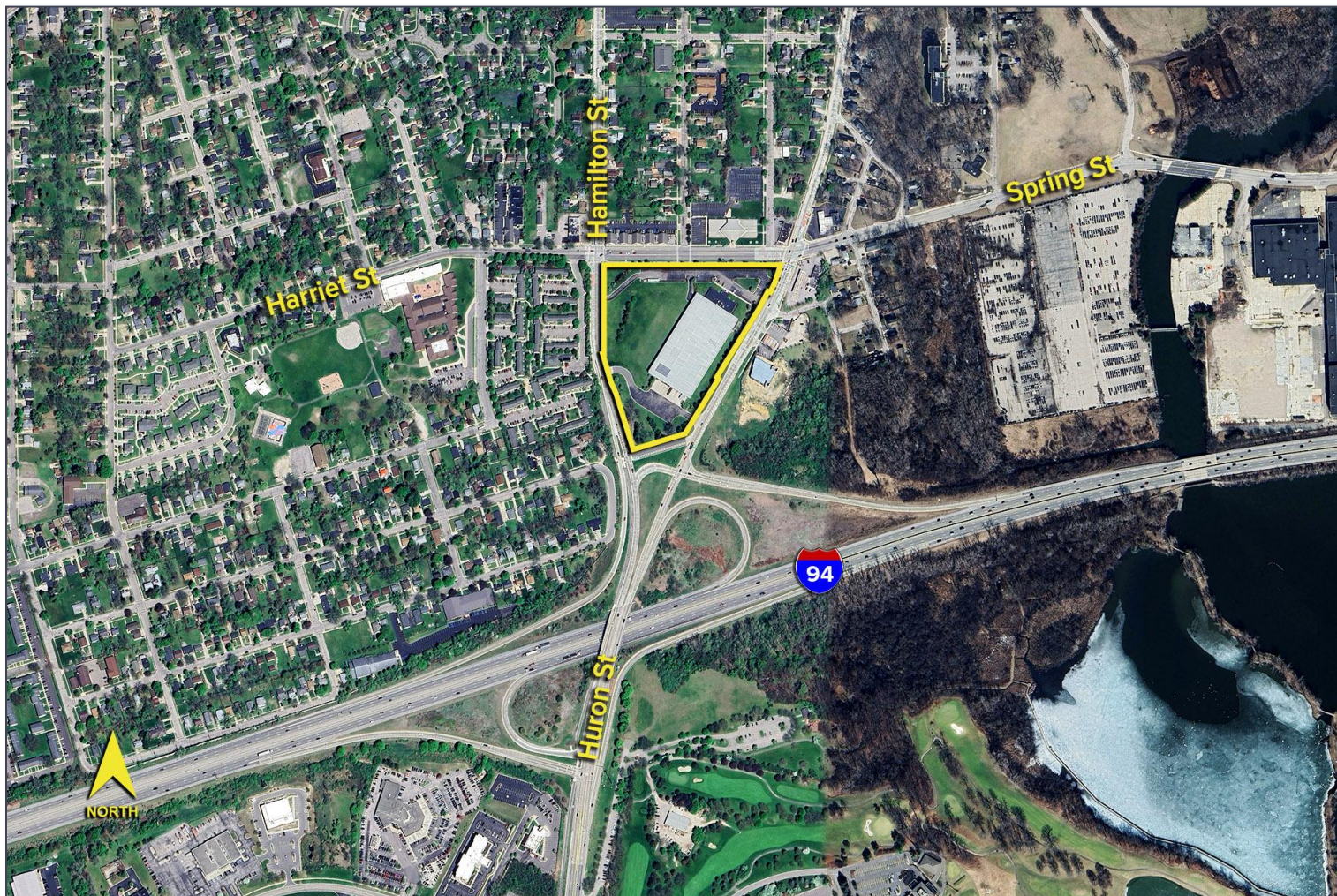
Information is subject to verification and no liability for errors or omissions is assumed. Price is subject to change and listing withdrawal.

506 S. Huron Street – Ypsilanti, Michigan

Industrial For Sale

103,548
Square Feet
AVAILABLE

Aerial



For more information, please contact:

STEVE GORDON

(248) 948 0101

sgordon@signatureassociates.com

JAY CHAVEY

(248) 948 4196

jchavey@signatureassociates.com

SIGNATURE ASSOCIATES

One Towne Square, Suite 1200

Southfield, MI 48076

www.signatureassociates.com

Information is subject to verification and no liability for errors or omissions is assumed. Price is subject to change and listing withdrawal.