



**COMMERCIAL
REAL ESTATE**
the sign of a profitable property



PRIME 6,970 SF END CAP AND IN-LINE SUITES - READY FOR OCCUPANCY

4450-4460 Firestone Blvd., South Gate, CA 90280



JOSEPH GOBERT
(818) 514-3494 | jgobert@illicre.com
DRE#01900768

LIAM VLACO
(818) 617-2348 | liam@illicre.com
DRE#02287791

TODD NATHANSON
(818) 514-2204 | todd@illicre.com
DRE#00923779



5945 CANOGA AVENUE, WOODLAND HILLS, CA 91367 - 818.501.2212/PHONE - www.illicre.com - DRE #01834124

PROPERTY FEATURES

4450-4460 Firestone Blvd., South Gate, CA 90280







APPROX. 1,820 - 6,970 SF

END-CAP AND IN-LINE SPACES AVAILABLE

- ✓ The rates proposed are reduced rates and only apply for the first six months
- ✓ Recently updated strip center, end-cap and in-line
- ✓ White-boxed suites available for lease
- ✓ Upgraded 200 amp 3- phase electrical panels
- ✓ Positioned on a high-visibility thoroughfare
- ✓ 18 surface parking spaces and street parking available

AREA AMENITIES

- ✓ Short distance to Azalea Regional Shopping Center anchored by Walmart, Marshalls, Ross Dress for Less, WSS Shoes, and In-N-Out
- ✓ Over ±40,000 CPD on Firestone Blvd

DEMOGRAPHICS		1 MILE	3 MILE	5 MILE
	Population	37,637	354,733	834,996
	Avg. HH Income	\$72,564	\$72,754	\$75,028
	Daytime Pop	29,792	277,720	649,932
	Traffic Count	± 40,551 CPD ON FIRESTONE BLVD		

RETAIL SHELL SPACES
SOUTH GATE, CA

INTERIOR PHOTOS

4450-4460 Firestone Blvd., South Gate, CA 90280



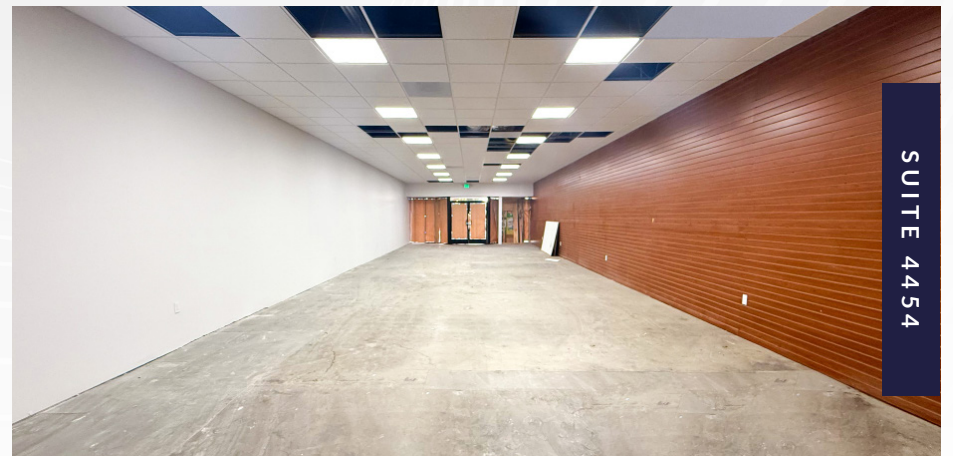
SUITE 4450



SUITE 4452



SUITE 4454





AERIAL MAP



COMMERCIAL
REAL ESTATE

JOSEPH GOBERT
ASSOCIATE

(818) 514-3494 | jgobert@illicre.com
DRE#01900768

LIAM VLACO
ASSOCIATE

(818) 617-2348 | liam@illicre.com
DRE#02287791

TODD NATHANSON
PRESIDENT

(818) 514-2204 | todd@illicre.com
DRE#00923779



5945 CANOGA AVENUE | WOODLAND HILLS, CA 91367 | 818.501.2212/PHONE | www.illicre.com | DRE #01834124

This information has been secured from sources we believe to be reliable, but we make no representations or warranties, expressed or implied, as to the accuracy of the information. References to square foot-age are approximate. References to neighboring retailers are subject to change, and may not be adjacent to the vacancy being marketed either prior to, during, or after leases are signed. Lessee must verify the information and bears all risk for any inaccuracies.