



# One Chesterfield Place

14755 N Outer Forty Rd, Chesterfield, MO 63017



## FOR MORE INFORMATION CONTACT:

Tim Balk, MBA | (314) 746-1433  
tbalk@gershmancre.com

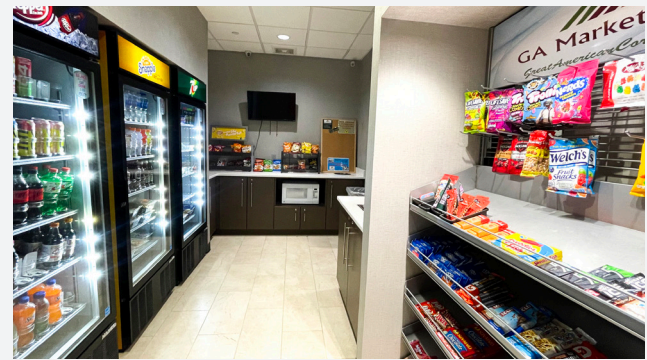
Tom Erman | (314) 746-1444  
terman@gershmancre.com



**Gershman**  
Commercial Real Estate

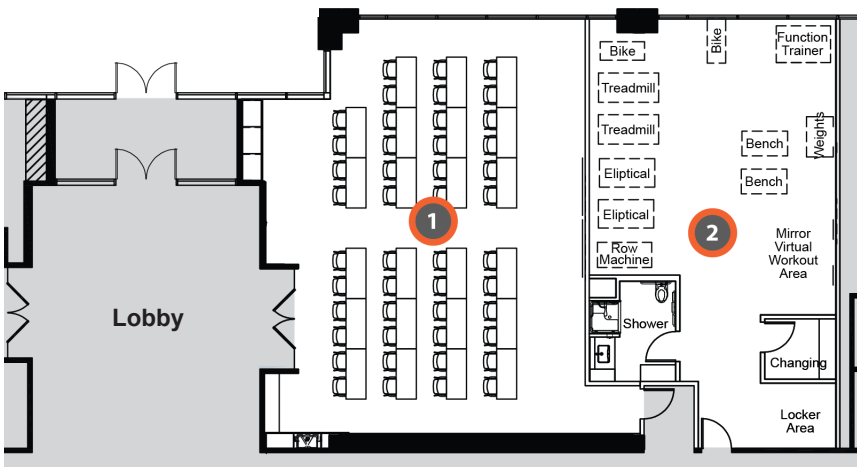
## 1,580 SF - 10,003 SF OFFICE FOR LEASE

- Prominent 1st Floor Lobby Suite Available
- New Conference/Training Room & Fitness Center
- Remodeled Lobby, Self-Serve Market & Outdoor Seating
- Complimentary Covered & Surface Parking
- Monument Signage Opportunity for Large Tenant
- Easy Access to I-64, I-270 & Hwy 141
- 4 Suites Available:
  - Suite 100 - 1,580 SF
  - Suite 150 - 6,778 SF
  - Suite 204 - 3,418 SF
  - Suite 510 - 10,003 SF
- Lease Rate: \$27.00 PSF, Full Service



### NEW TENANT AMENITIES

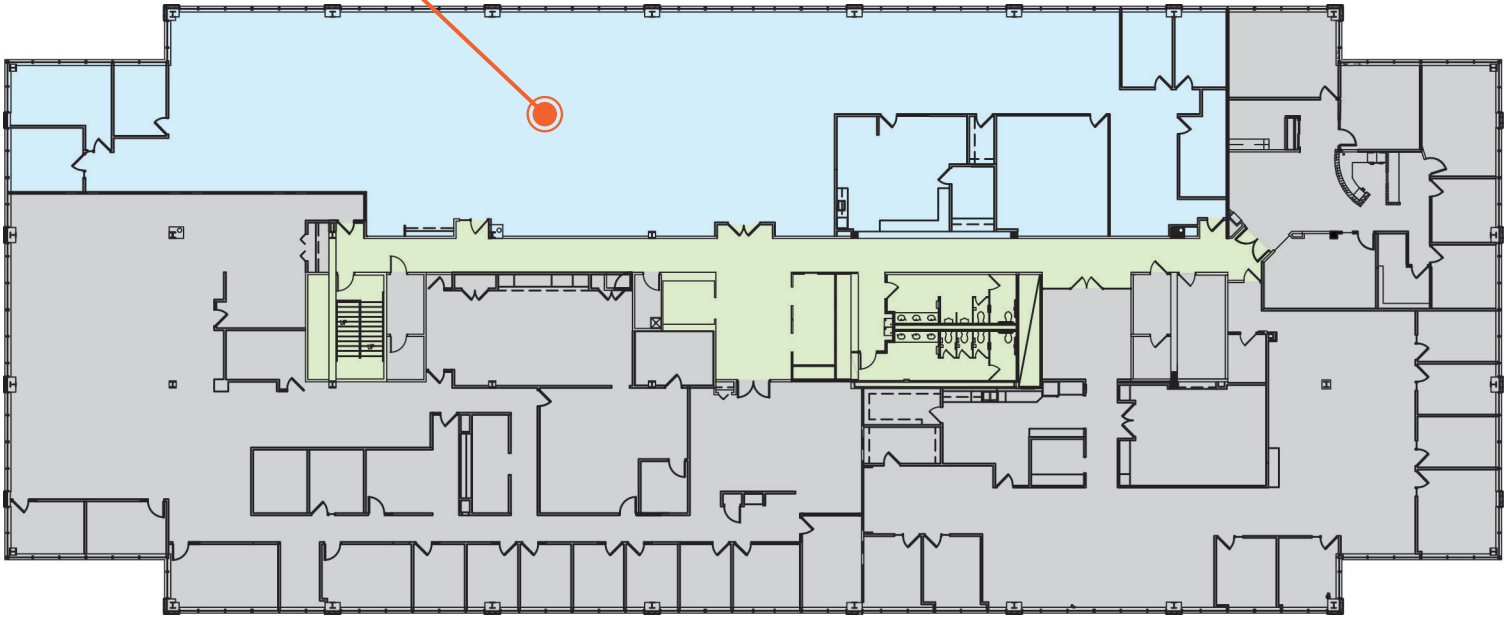
- 1 Conference/  
Training Room
- 2 Fitness Center



# Current Availabilities

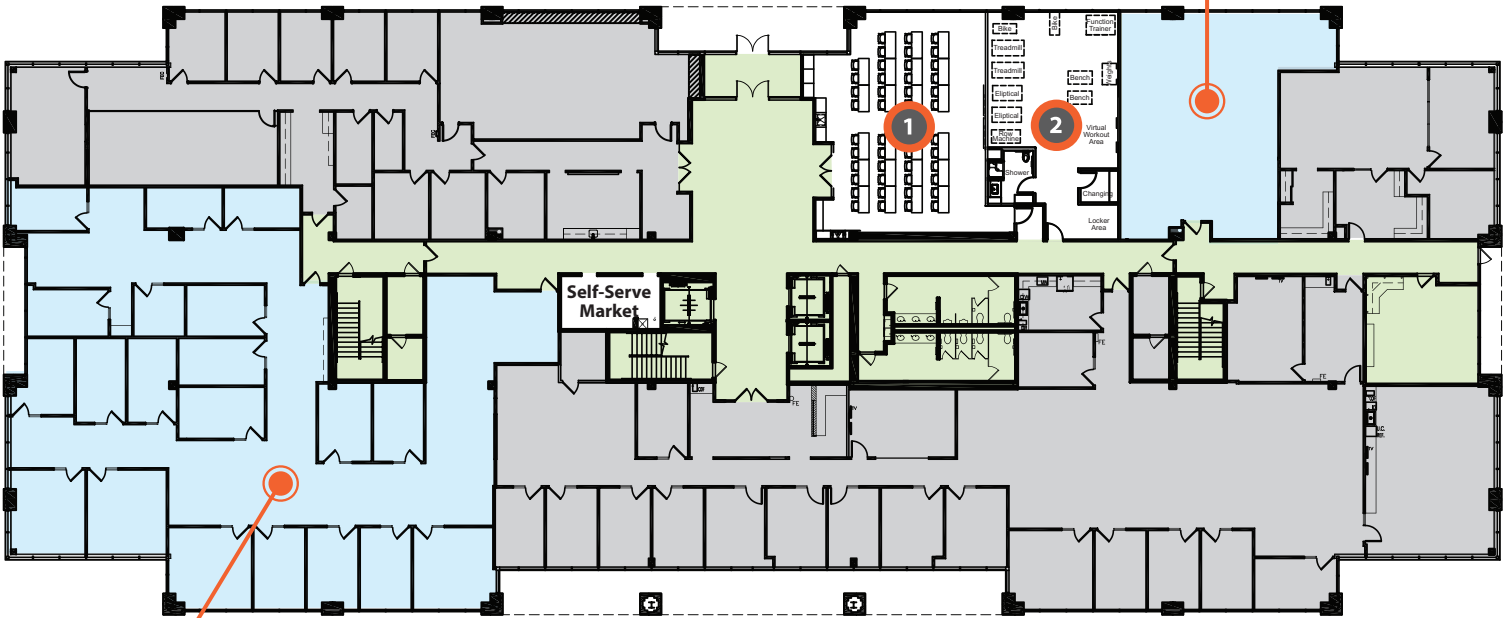
Suite 510\*  
10,003 SF

## FIFTH FLOOR



## FIRST FLOOR

Suite 100  
1,580 SF



Suite 150  
6,778 SF

# One Chesterfield Place

## Highly Visible from I-64/Hwy 40

Mercy Virtual

Chesterfield Pkwy

Delmar  
Gardens



Delmar  
Gardens

### FOR MORE INFORMATION CONTACT:

Tim Balk, MBA | (314) 746-1433  
tbalk@gershmancre.com

Tom Erman | (314) 746-1444  
terman@gershmancre.com



**Gershman**  
Commercial Real Estate

The information contained herein is not warranted, although it has been obtained from the owner of the property or from other sources we deem reliable. It is subject to change without notice. Owner and broker make no representation as to the environmental condition of the property and recommend purchaser's/tenant's independent investigation.