

FOR SALE

± 4,200 SF RETAIL BUILDING



**COLDWELL BANKER
COMMERCIAL**
BLAIR



607 W. WHITTIER BLVD.

MONTEBELLO, CALIFORNIA 90640

For more information contact:

PATRICK MICHEL

CBC Blair | Vice President
T: 323.594.0284 | O: 562.548.7414
BRE #01924800
Patrick@cbcblair.com

MATTHEW CHUNG

CBC Blair | Associate
T: 562.667.7335 | O: 562.549-6070
BRE #02283482
MChung@cbcblair.com

COLDWELL BANKER COMMERCIAL

CBC Blair
333 West Broadway, Ste. 312
Long Beach, CA 90802
Company BRE #01330395
www.cbcblair.com



BUILDING DESCRIPTION

ADDRESS:	607 W. Whittier Blvd. Montebello, CA 90640
SALE PRICE:	\$1,750,000
PRICE PSF:	\$416.66
BUILDING SIZE:	± 4,200 SF
LOT SIZE:	± 5,584SF
GL DOORS:	2 Total
ZONING :	MNC2
YEAR BUILT:	1948
APN:	6349-006-021

PROPERTY HIGHLIGHTS

- Prime Retail Locations
- Downtown Montebello
- Revitalization of Downtown Montebello making area valuable
- Good Power

607

W. WHITTIER BLVD.

WHITTIER, CA

For more information contact:

PATRICK MICHEL

CBC Blair | Vice President

T: 323.594.0284 | O: 562.548.7414

BRE #01924800

Patrick@cbcblair.com

MATTHEW CHUNG

CBC Blair | Associate

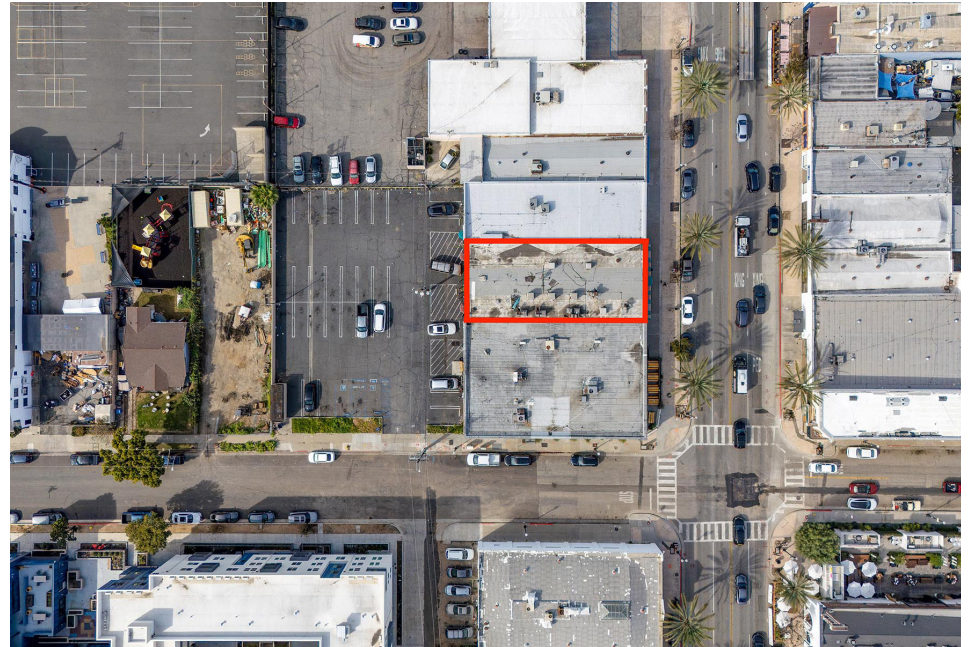
T: 562.667.7335 | O: 562.549-6070

BRE #02283482

MChung@cbcblair.com



**COLDWELL BANKER
COMMERCIAL
BLAIR**



607

W. WHITTIER BLVD.

WHITTIER, CA

For more information contact:

PATRICK MICHEL

CBC Blair | Vice President

T: 323.594.0284 | O: 562.548.7414

BRE #01924800

Patrick@cbcblair.com

MATTHEW CHUNG

CBC Blair | Associate

T: 562.667.7335 | O: 562.549-6070

BRE #02283482

MChung@cbcblair.com



**COLDWELL BANKER
COMMERCIAL
BLAIR**



SUBJECT PROPERTY



**PRIME RETAIL
LOCATION**



**DOWNTOWN
MONTEBELLO**

607

W. WHITTIER BLVD.

WHITTIER, CA

For more information contact:

PATRICK MICHEL

CBC Blair | Vice President

T: 323.594.0284 | O: 562.548.7414

BRE #01924800

Patrick@cbcblair.com

MATTHEW CHUNG

CBC Blair | Associate

T: 562.667.7335 | O: 562.549-6070

BRE #02283482

MChung@cbcblair.com



**COLDWELL BANKER
COMMERCIAL**
BLAIR