

Echo Lake Apartments

19240 Aurora Avenue N, Shoreline, WA 98133
Suite B - Commercial Space For Lease

CBRE



Available

Property Overview

Echo Lake Apartments is a six-story, 289-unit Class A multi-family development in Shoreline, WA, right off Highway 99. It features a four-way signalized intersection and great visibility, with access to the RapidRide E Line and Interurban Trail. Located just 1.5 miles from the Shoreline North/185th Link Light Rail Station, the property is surrounded by city parks and is close to schools, Costco, Home Depot, and Starbucks. The charming residential areas offer a welcoming atmosphere, while commuters enjoy easy access to I-5 and Highway 99, with public transportation options nearby at the Aurora Village Transit Center and Shoreline Park & Ride.



Space Size: +/- 1,192 SF

Asking Rate/NNN: Please call Brokers

Incredible building branding signage opportunity

Prominent End Cap

Ideal space for retail services, office, and medical uses

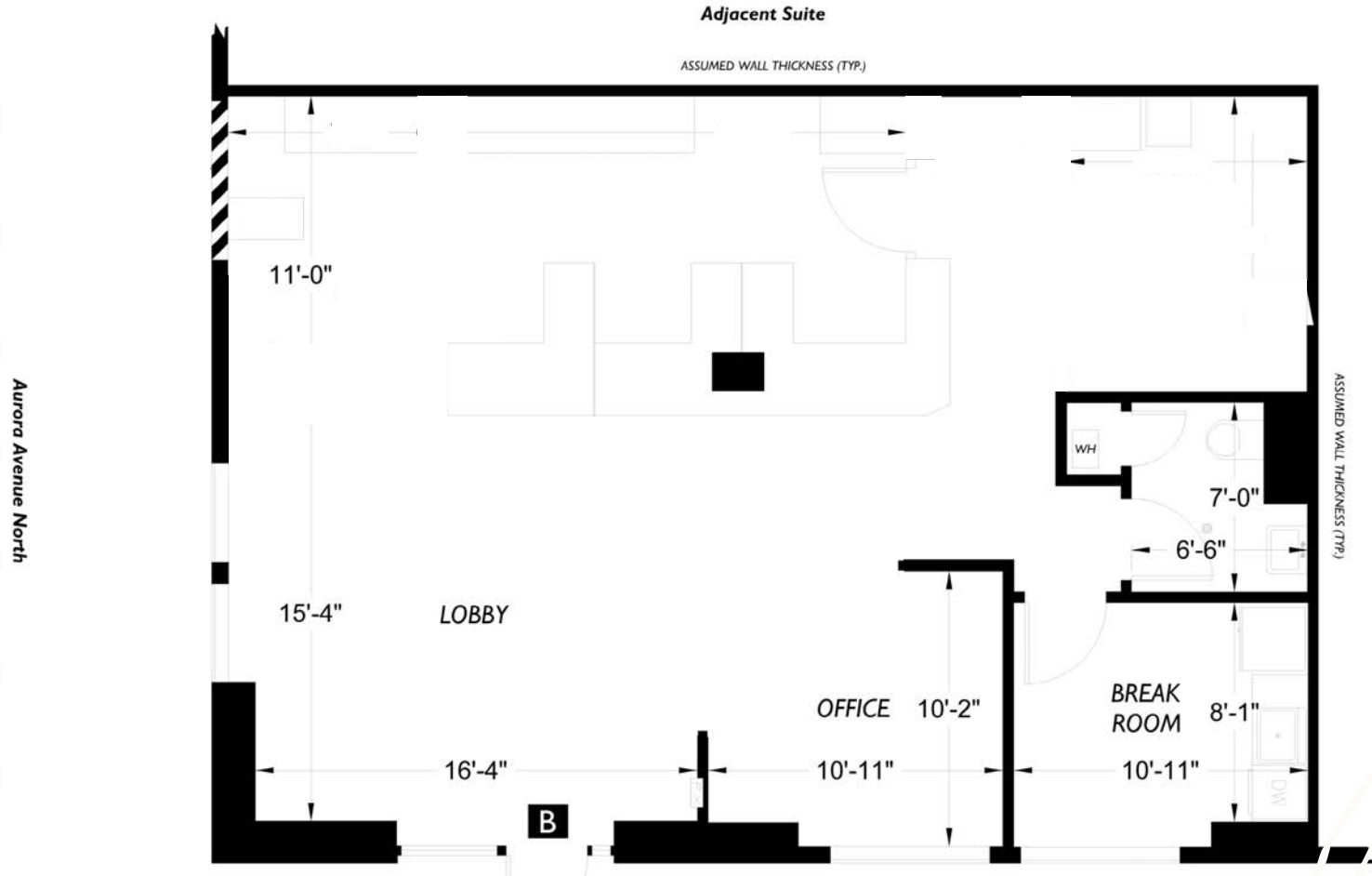
Directly Situated on Highway 99, RapidRide E Line, & Interurban Trail

Strong traffic counts: 32,919 vehicles per day

3 reserved parking stalls, additional employee parking available

Shoreline Demographics	1 MILES	3 MILES	5 MILES
2024 Population	20,076	128,176	287,172
2024 Daytime Population	19,944	106,889	246,958
2024 Median Age	41.50	41.80	40.80
2024 Average Household Income	\$142,361	\$152,087	\$154,716

Floor Plan



Retail

+/- 1,192 RSF



Map



Aurora Marketplace
SAFeway **TJ-maxx**
DOLLAR TREE

Aurora Village Medical Center
COSTCO WHOLESALE **THE HOME DEPOT** **petco**
BIG 5 UW Medicine

The Shops at Richmond Beach
QFC **SWEDISH**

Fred Meyer
AutoZone

Shoreline Marketplace
TRADER JOE'S
The Everett Clinic
MUDBAY

Shoreline
COMMUNITY COLLEGE

town & country MARKETS **pure barre**
Marshall's **goldfish** **swimschool**

planet fitness

Aurora Center
DAISO **planet fitness**
Office DEPOT

LOWE'S

Carkeek Plaza
QFC

Oak Tree Village
AMC THEATRES

Burlington



Echo Lake Retail

SHORELINE

Parkwood Plaza
SAFeway **JOANN**

Puetz GOLF

UW Medicine

NORTH SEATTLE COLLEGE

Shoreline Sports Plex

NE 175th St

King County
Metro North Base

NE 145th St

SPROUTS FARMERS MARKET **LA FITNESS**
PETSMART **HomeGoods**

1st Ave NE

TJ-maxx

REGAL

REGAL

Ballinger Village
RITE AID **THRIFTWAY**

Ballinger Way NE

SAFeway

QFC **DOLLAR TREE**

SAFeway

NE 125th St

Fred Meyer

Lake City Plaza
GROCERY OUTLET **ACE** **O'Reilly**

Sand Point Way NE

Northgate Station
Target **DICK'S SPORTING GOODS** **NORDSTROM** **rack** **BEST BUY** **24 HOUR FITNESS**
BARNES & NOBLE **petco**

Town Center at Lake Forest Park
planet fitness **RITE AID** **ROSS DRESS FOR LESS** **ACE**
Albertsons **MUDBAY**
THIRD PLACE BOOKS

KENMORE

522

Lake Washington

Puget Sound

Echo Lake Apartments

19240 Aurora Avenue N, Shoreline, WA 98133
Suite B - Commercial Space

CONTACTS

Lourdes Valdesuso

CBRE
Vice President
M+1 206 618 7003
Lourdes.Valdesuso@cbre.com

Gretchen Hamm

Coldwell Banker Commercial – Danforth
M+1 206-972-1661
gretchen@gretahamm.com

CBRE



**COLDWELL BANKER
COMMERCIAL**
DANFORTH

© 2024 CBRE, Inc. All rights reserved. This information has been obtained from sources believed reliable but has not been verified for accuracy or completeness. CBRE, Inc. makes no guarantee, representation or warranty and accepts no responsibility or liability as to the accuracy, completeness, or reliability of the information contained herein. You should conduct a careful, independent investigation of the property and verify all information. Any reliance on this information is solely at your own risk. CBRE and the CBRE logo are service marks of CBRE, Inc. All other marks displayed on this document are the property of their respective owners, and the use of such marks does not imply any affiliation with or endorsement of CBRE. Photos herein are the property of their respective owners. Use of these images without the express written consent of the owner is prohibited. 1.3.25 CH