

# TENTH STREET COMMERCE PARK UNIT H

1100 SW 10TH STREET UNIT H, DELRAY BEACH, FL 33444

## PROPERTY SUMMARY

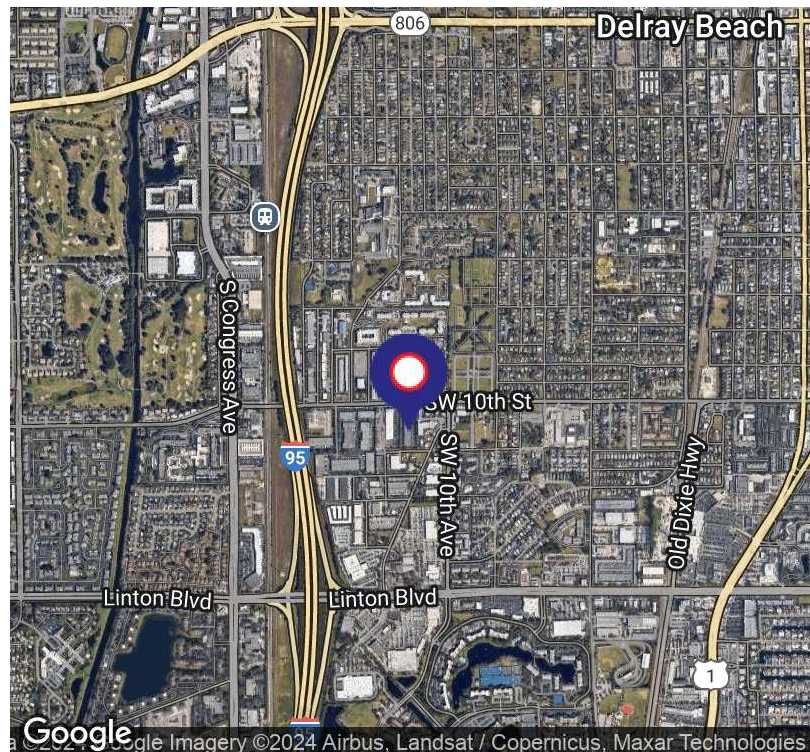


## PROPERTY DESCRIPTION

A 4,541 SF warehouse unit at Tenth Street Commerce Park. Located just east of I-95, minutes from booming Downtown Delray Beach and Boca Raton's upscale communities. Built in 2002 with 749 SF of offices, 3 phase, 480V power, 26' ceilings and ample full height impact glass. Precast concrete construction with twin-t roof, dock and street level loading. Features full kitchenette, new AC, water fountain, utility sink, IT/storage closet and 6 parking spaces.

## PROPERTY HIGHLIGHTS

- 4,541 SF w/ 749 SF of office
- 3 phase, 480 V power
- 26' ceiling clear in warehouse
- Impact glass, precast concrete roof
- Dock and Grade level doors
- Kitchenette, water fountain and utility sink
- IT closet/storage
- MIC Zoning (Mixed Ind. Comm.) allows manufacturing, storage, wholesale and limited retail



## KEN SILBERLING

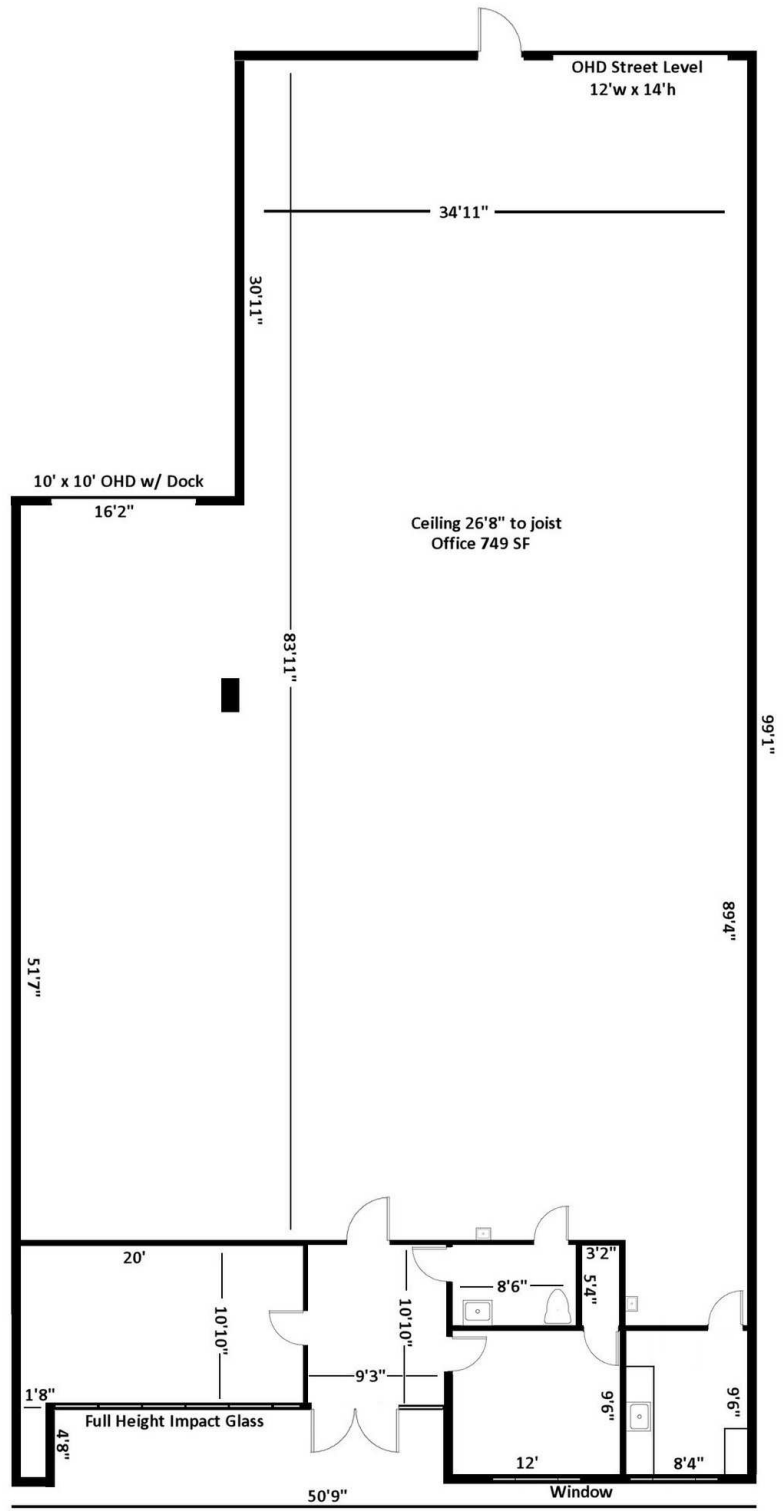
Sr. VP - Brokerage and Tenant Representation  
Direct: 561.245.0295 | Cell: 561.245.0295  
ken@levyai.com



# TENTH STREET COMMERCE PARK UNIT H

1100 SW 10TH STREET UNIT H, DELRAY BEACH, FL 33444

FLOOR PLAN - NOT NECESSARILY TO SCALE - MEASUREMENTS APPROXIMATE



## KEN SILBERLING

Sr. VP - Brokerage and Tenant Representation  
Direct: 561.245.0295 | Cell: 561.245.0295  
ken@levyrai.com



FOR LEASE

# TENTH STREET COMMERCE PARK UNIT H

1100 SW 10TH STREET UNIT H, DELRAY BEACH, FL 33444

## UNIT H ADDITIONAL PHOTOS



### KEN SILBERLING

Sr. VP - Brokerage and Tenant Representation  
Direct: 561.245.0295 | Cell: 561.245.0295  
ken@levyrai.com

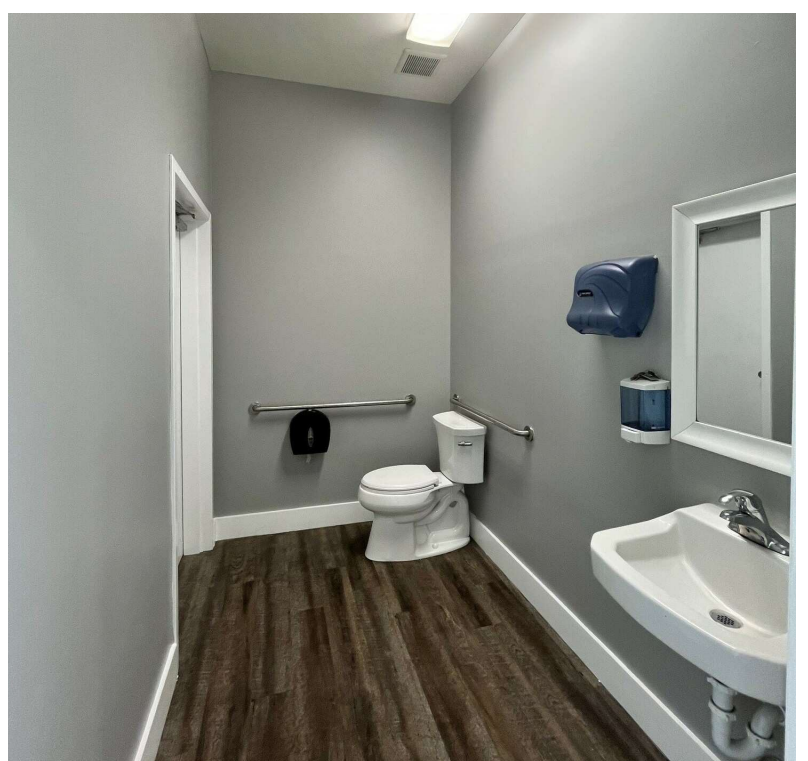
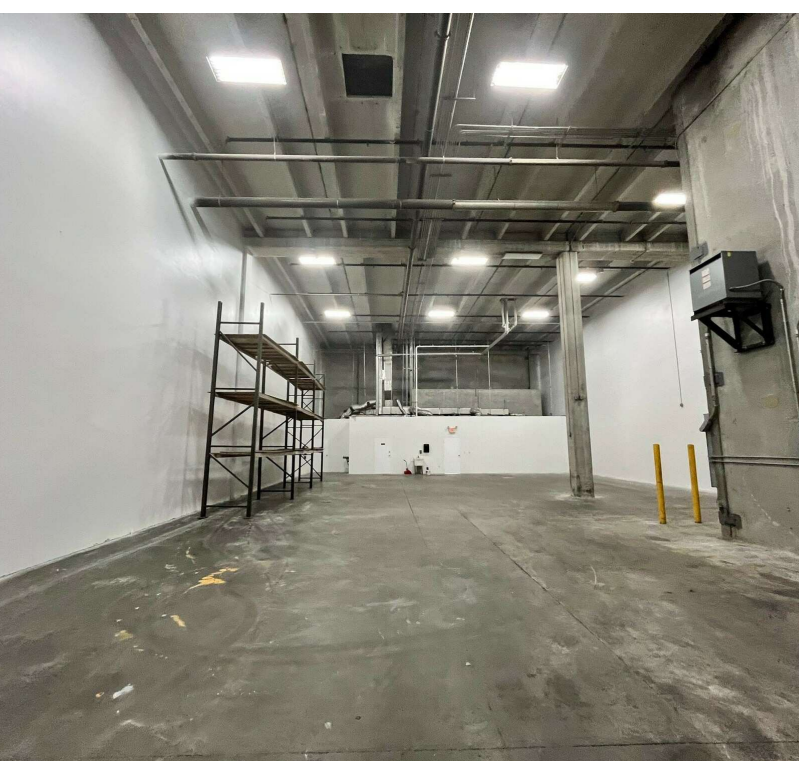


FOR LEASE

# TENTH STREET COMMERCE PARK UNIT H

1100 SW 10TH STREET UNIT H, DELRAY BEACH, FL 33444

## UNIT H ADDITIONAL PHOTOS



**KEN SILBERLING**

Sr. VP - Brokerage and Tenant Representation  
Direct: 561.245.0295 | Cell: 561.245.0295  
ken@levyrai.com

