

office space
for
LEASE

1,713 sf to 6,345 sf

\$24.00/sf
full service

suite 310 - 2,114 sf*

suite 330 - 1,713 sf*

suite 340 - 2,518 sf*

suite 365 - 1,952 sf

*suites currently combined into
one 6,345 sf suite

- + Bulding: 85,053 SF
- + Stories: 3
- + Year Built: 1987
- + Parking: 4/ 1,000
- + Signage: Marquee

1650 Sand Lake Road
Orlando, Florida 32809

FLORIDA MALL BUSINESS CENTRE

**MULTIPLE
SUITES**

patrick goetz
vice president
(407) 734.7210
pat@BBDRE.com



Bishop Beale Duncan
COMMERCIAL REAL ESTATE

THE FLORIDA MALL[®]
A SIMON MALL



sand lake rd

orange blossom trl



highlights

Located on the
hard corner of
Orange Blossom
Trail and Sand
Lake Rd

- Tenant-Only Parking Deck with Secure Access
- Central South Orlando Location:
 - 2 miles from Florida Highway 528
 - 2 Miles from the Florida Turnpike
 - 5 miles from Interstate 4
 - 7 miles from the Orlando International Airport



250 N. Orange Ave., Ste. 1500
Orlando, FL 32801
+ (407) 426.7702
www.BBDRE.com

This offer is subject to errors, omissions, prior sale or withdrawal without notice.



for more information, contact patrick goetz vice president (407) 734.7210 pat@BBDRE.com

elevation

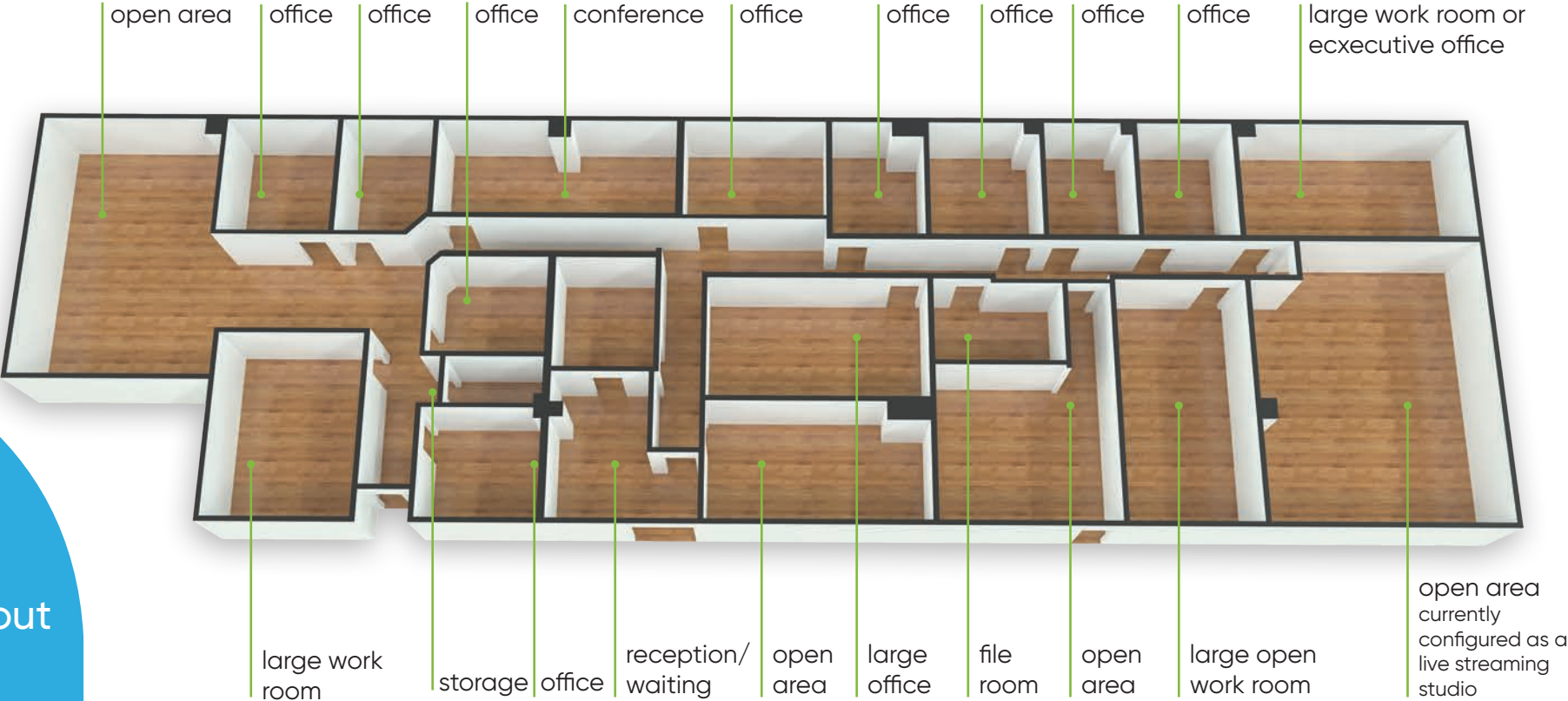


exterior

for more information, contact patrick goetz vice president (407) 734.7210 pat@BBDRE.com

Suites 310+330+340* | 6,345 sf combined full suite

*Available for lease in combined configuration



3D layout



for more information, contact patrick goetz vice president (407) 734.7210 pat@BBDRE.com

suites 310+330+340* (combined current configuration) | 6,345 sf

*Available for lease in combined configuration



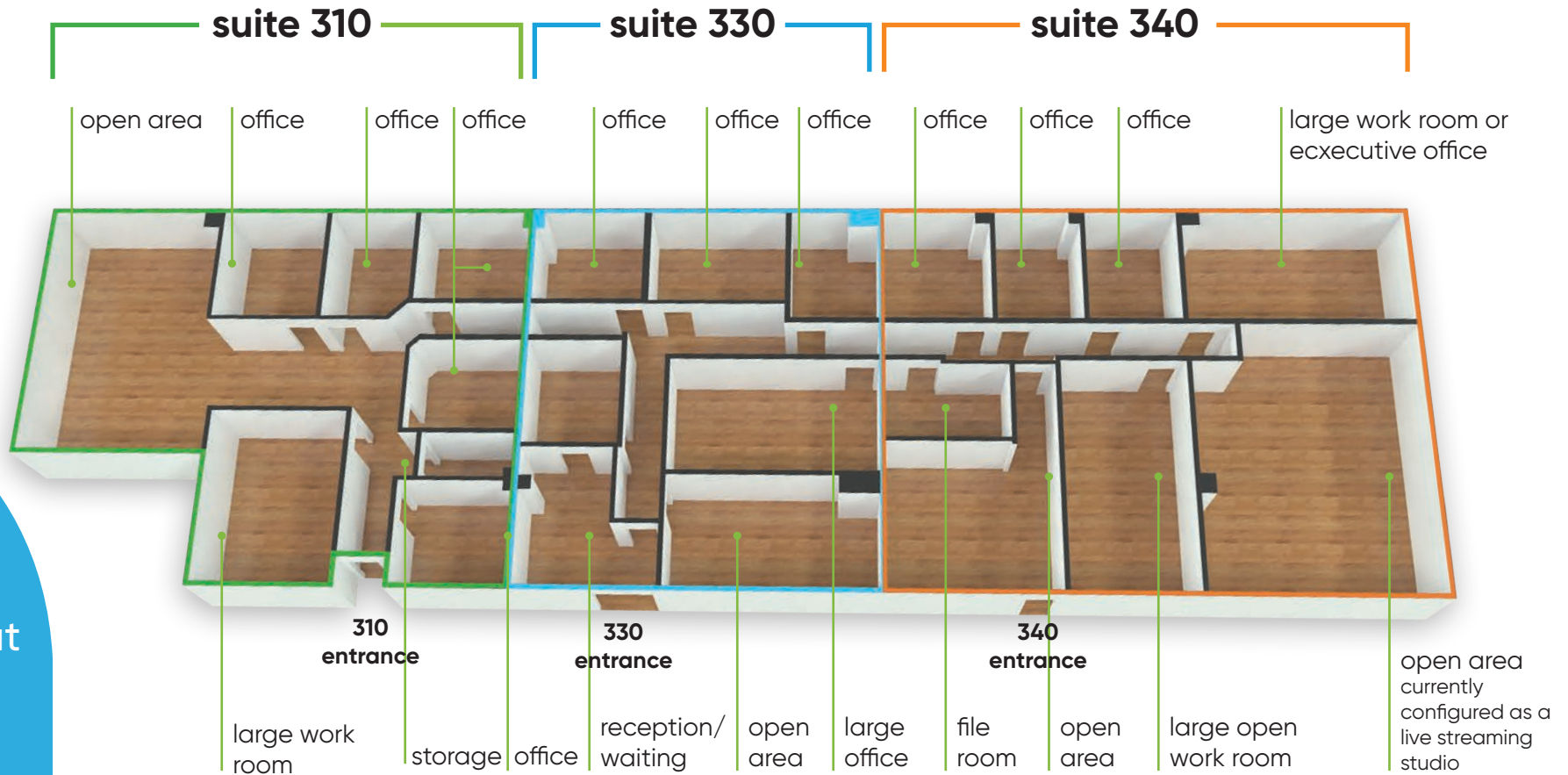
floor plan



for more information, contact patrick goetz vice president (407) 734.7210 pat@BBDRE.com

Suites 310+330+340* | 6,345 sf
separate suite configuration

suite 310-2,114 sf | suite 330-1,713 sf* | suite 340-2,518 sf | 6,345 sf total



3D layout

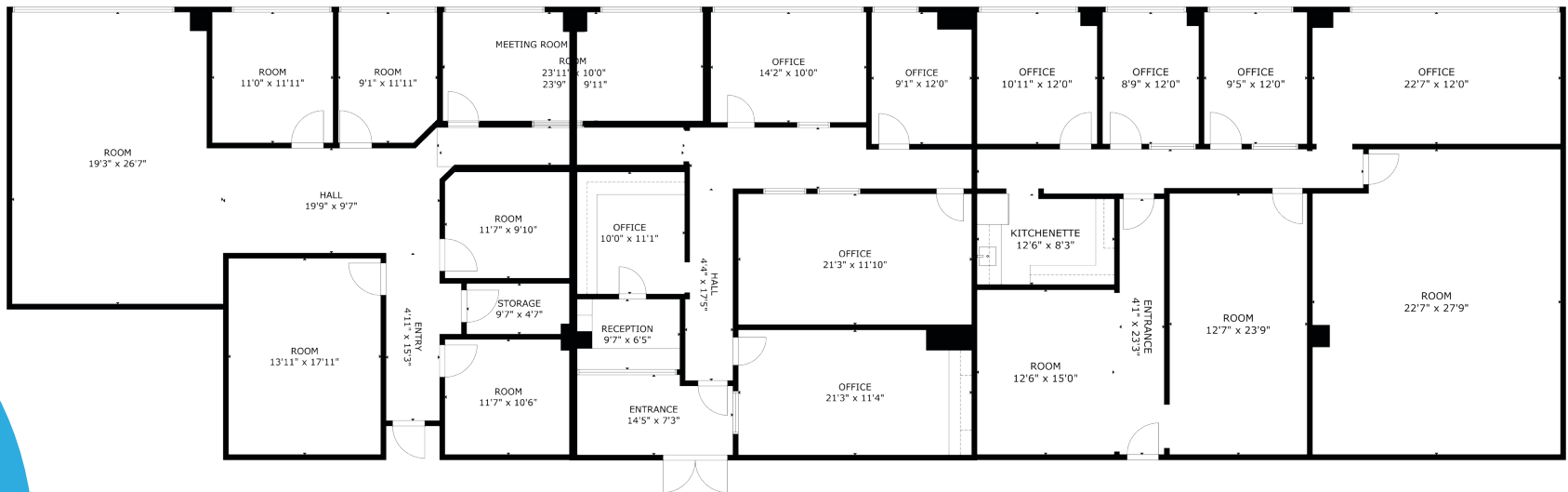


for more information, contact patrick goetz vice president (407) 734.7210 pat@BBDRE.com

Suites 310+330+340* | 6,345 sf
separate suite configuration

suite 310–2,114 sf | **suite 330**–1,713 sf* | **suite 340**–2,518 sf | 6,345 sf total

*Available for lease in combined configuration



floor plan



for more information, contact patrick goetz vice president (407) 734.7210 pat@BBDRE.com

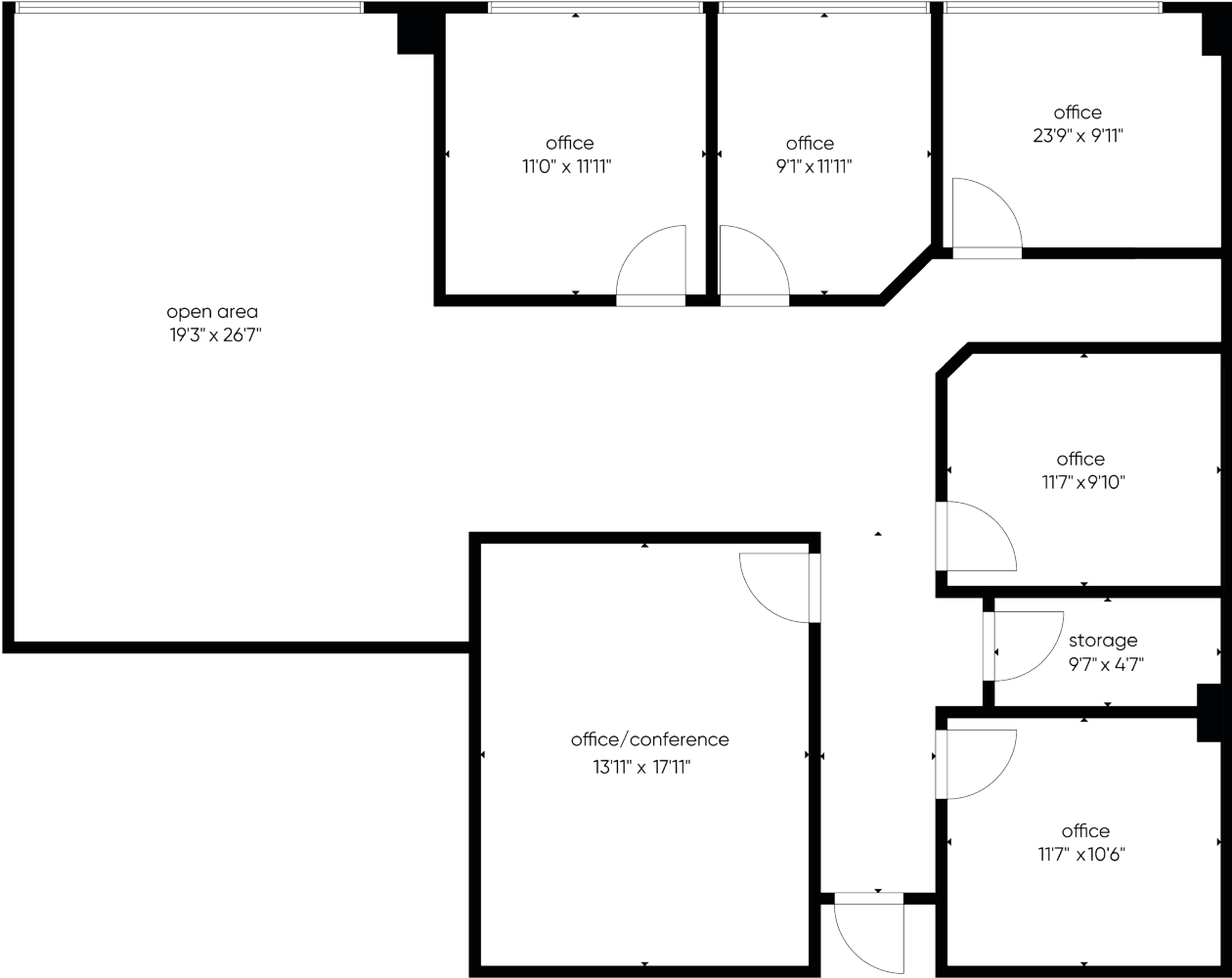
Suite 310 | 2,114 sf



3D layout



Suite 310 | 2,114 sf



floor plan



for more information, contact patrick goetz vice president (407) 734.7210 pat@BBDRE.com

Suite 310 | 2,114



interiors

reception/waiting

open work room

office

office



Suite 330 | 1,713 sf

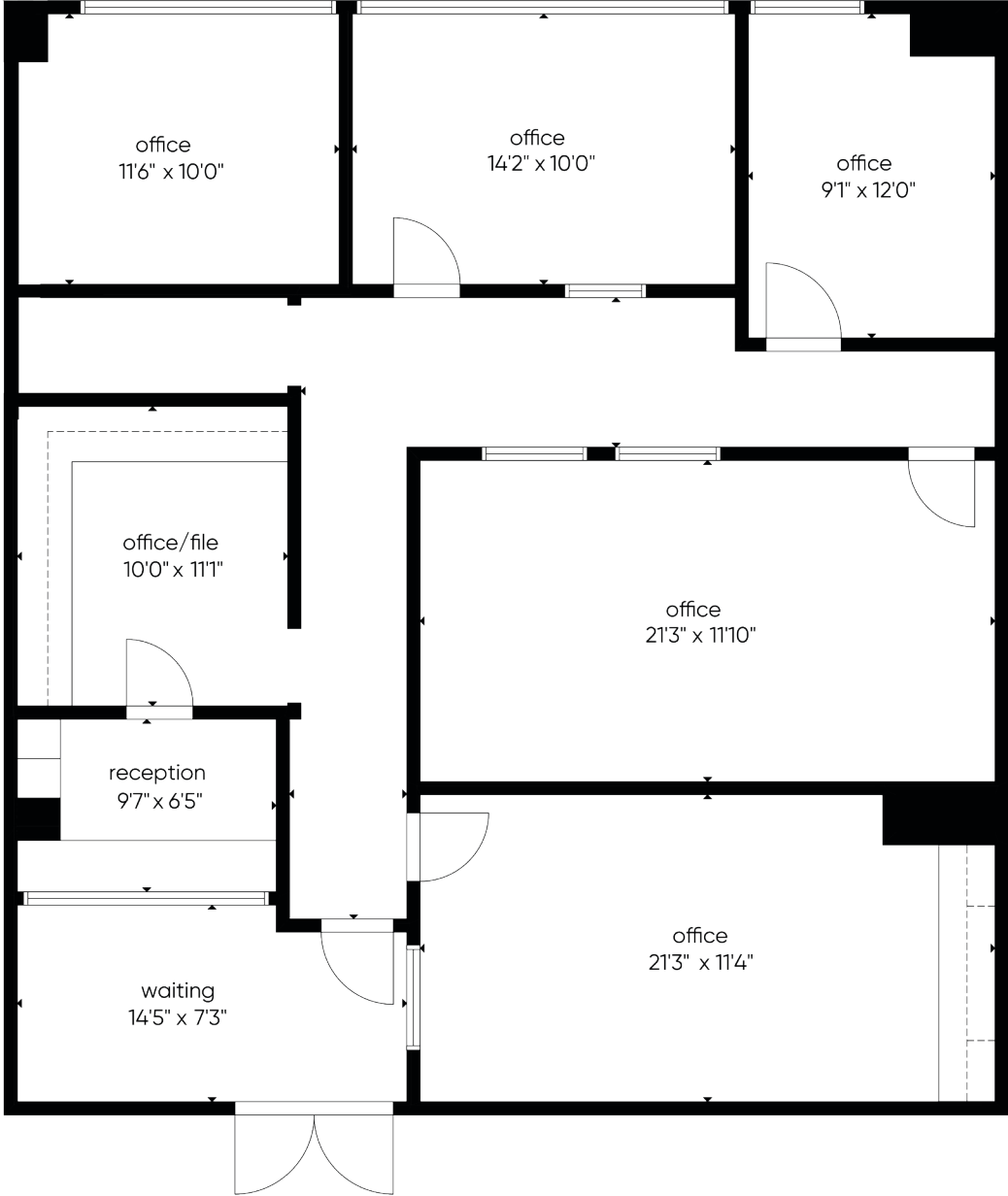


3D layout



for more information, contact patrick goetz vice president (407) 734.7210 pat@BBDRE.com

Suite 330 | 1,713 sf



floor plan



for more information, contact patrick goetz vice president (407) 734.7210 pat@BBDRE.com

Suite 330 | 1,713



interiors



for more information, contact patrick goetz vice president (407) 734.7210 pat@BBDRE.com

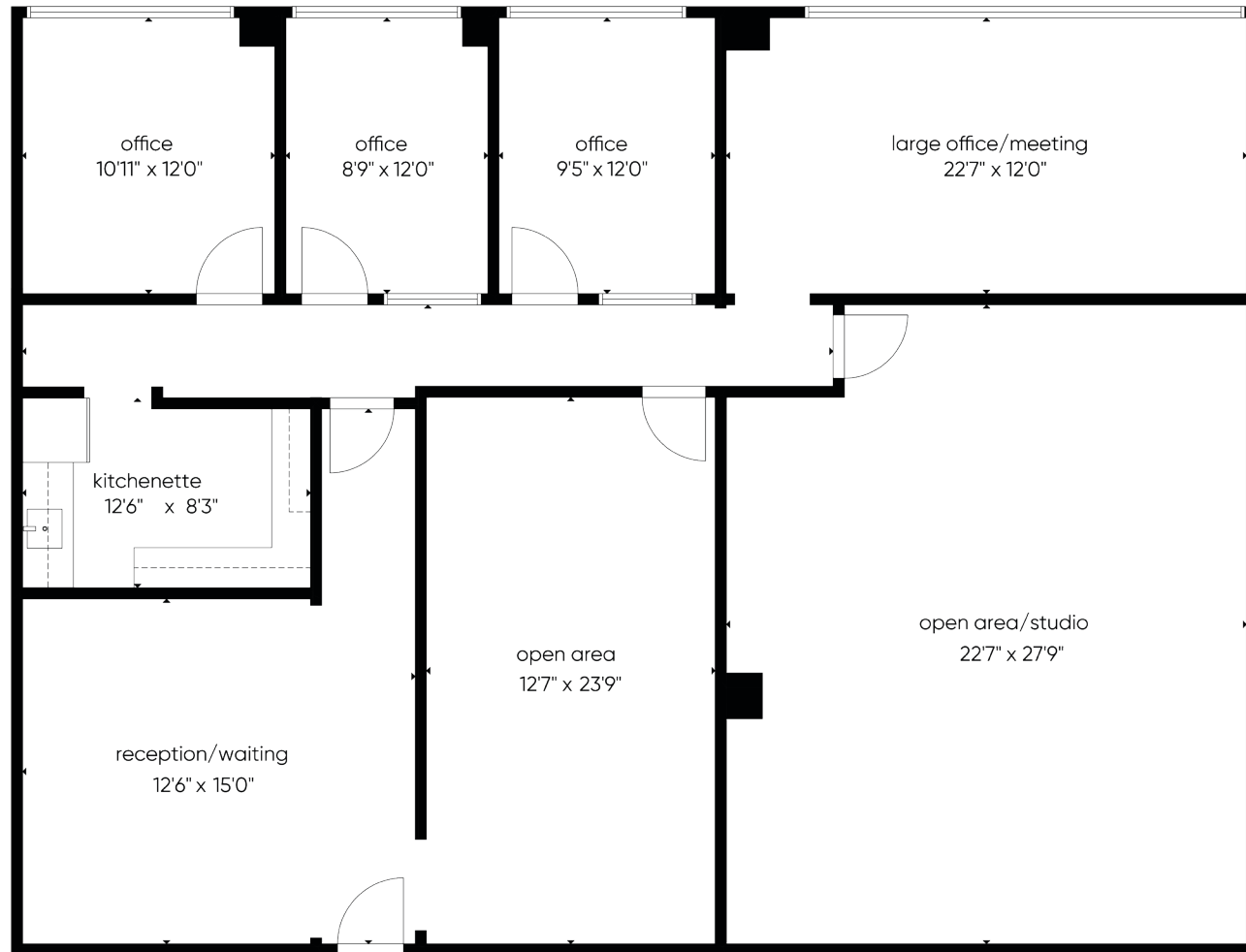
Suite 340 | 2,518



3D layout



Suite 340 | 2,518



floor plan



for more information, contact patrick goetz vice president (407) 734.7210 pat@BBDRE.com

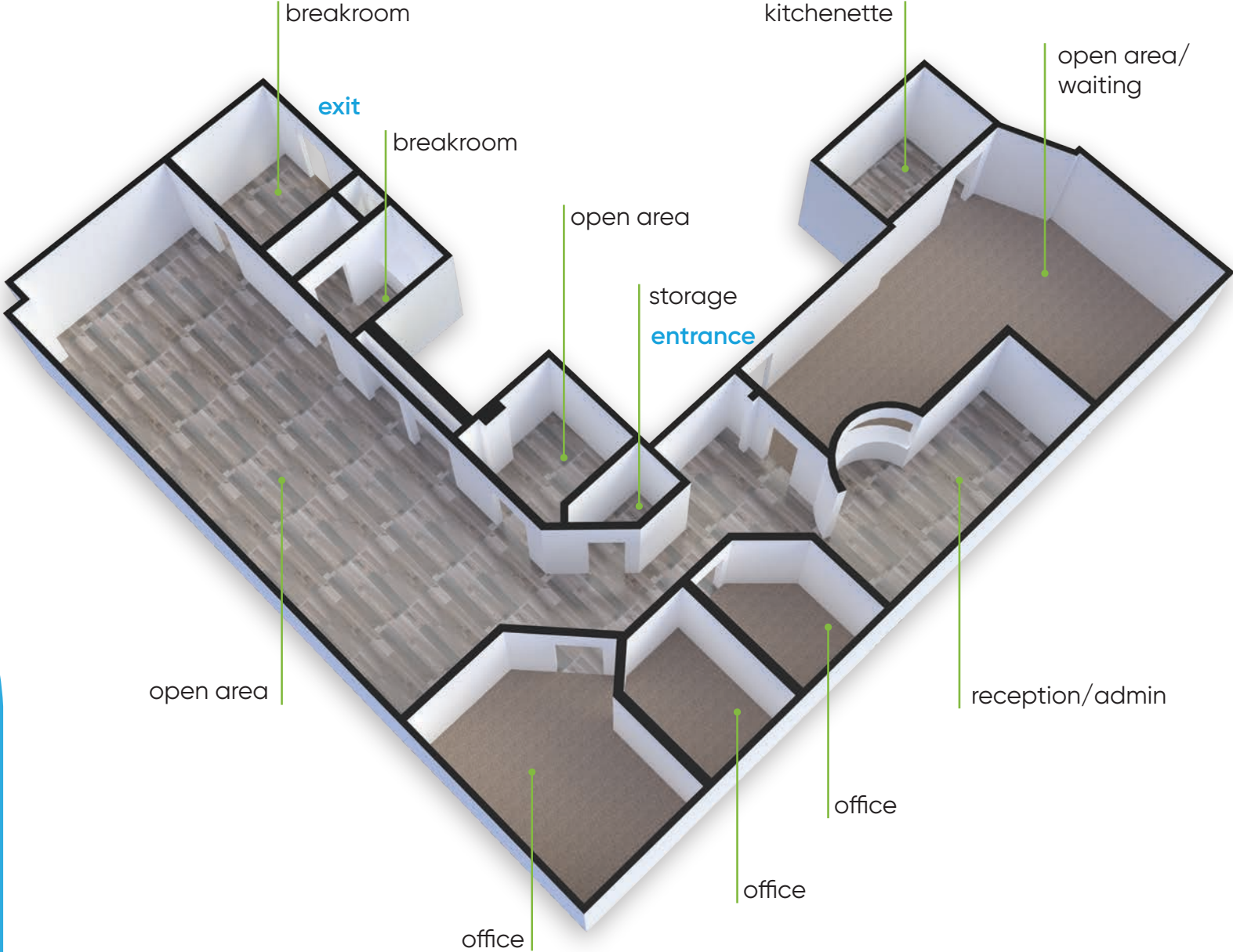
Suite 340 | 2,518



interiors



suite 365 | 1,952 sf

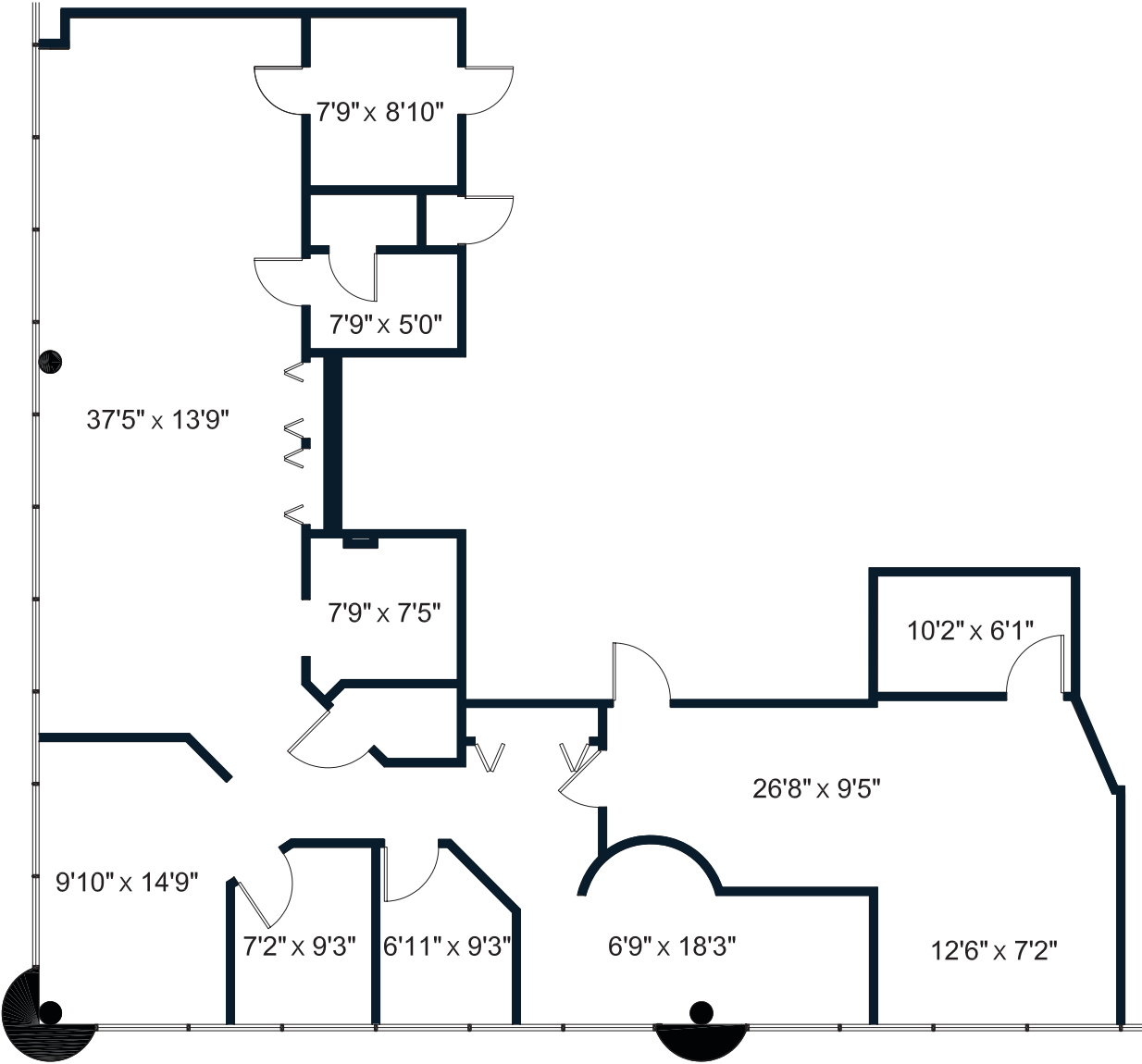


3D layout



for more information, contact patrick goetz vice president (407) 734.7210 pat@BBDRE.com

suite 365 | 1,952 sf



floor plan



for more information, contact patrick goetz vice president (407) 734.7210 pat@BBDRE.com

interior photos



open area



office



breakroom



office

interiors



for more information, contact patrick goetz vice president (407) 734.7210 pat@BBDRE.com

interior photos



open area



office



breakroom

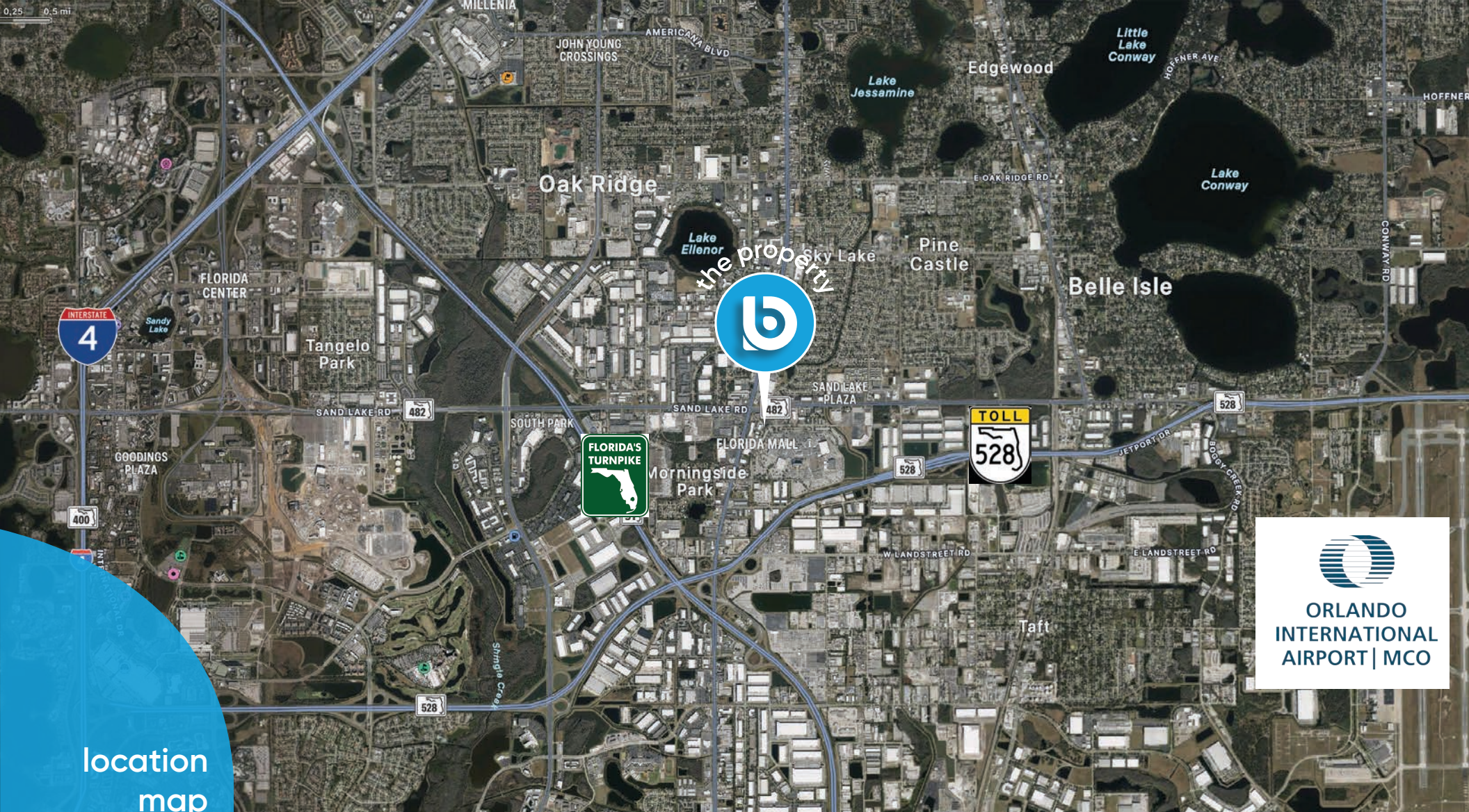


office

interiors



for more information, contact patrick goetz vice president (407) 734.7210 pat@BBDRE.com



location
map

demographics

| Radius | Population | HH Income | Businesses | Employees |
|--------|------------|-----------|------------|-----------|
| 1-Mile | 5,679 | \$65,925 | 1,217 | 16,022 |
| 2-Mile | 22,686 | \$60,287 | 3,630 | 40,459 |
| 3-Mile | 70,900 | \$62,232 | 6,315 | 67,455 |



for more information, contact patrick goetz vice president (407) 734.7210 pat@BBDRE.com