

.0126 ACRES
LAND / RETAIL



FOR SALE

PROPOSED



Kensington Avenue

Ferndale, Michigan 48220

Property Description

The property is situated minutes away from downtown Ferndale with a wide array of permitted uses. The parcel boasts good walk and bikeable scores. Major big box retailers nearby include, ALDI's, Kroger, AutoZone, O'Reilly's Auto, Legend Motors of Ferndale as well as Detroit Axle and Ferndale Laboratory.

Located off 8 Mile Rd, Kensington Ave. is between Woodward Ave and Coolidge Hwy.

The site has presented to the City of Ferndale the attached proposed flex industrial/office with mezzanine and overhead doors.

Property Highlights

- 0.126 Acres (5,487 SF)
- Zoned C-2 General Commercial District
- Qualified Opportunity Zone (QOZ)
- Permitted Uses: Residential, Medical, Bank, Retail, Restaurant, Veterinary
- Special Land Uses: Drive-in and drive through facilities
- Sale Price: \$220,000

DEMOGRAPHICS	1 MILE	3 MILES	5 MILES
Total Households	8,185	64,141	163,172
Total Population	17,299	146,313	382,412
Average HH Income	\$88,812	\$85,548	\$77,487

.0126 ACRES
LAND / RETAIL



FOR SALE



Map data ©2025 Google Imagery ©2025 Airbus,
Maxar Technologies

NAI Farbman
Commercial Real Estate Services, Worldwide.

www.naifarbman.com

Nathan Casey
Vice President | 248.351.4391
casey@farbman.com

Daniel McCleary
Vice President | 248.351.4384
mccleary@farbman.com

NO WARRANTY, EXPRESS OR IMPLIED, IS MADE AS TO THE ACCURACY OF THE INFORMATION CONTAINED HEREIN. THIS INFORMATION IS SUBMITTED SUBJECT TO ERRORS, OMISSIONS, CHANGE OF PRICE, RENTAL OR OTHER CONDITIONS, WITHDRAWAL WITHOUT NOTICE, AND IS SUBJECT TO ANY SPECIAL LISTING CONDITIONS IMPOSED BY OUR PRINCIPALS. COOPERATING BROKERS, BUYERS, TENANTS AND OTHER PARTIES WHO RECEIVE THIS DOCUMENT SHOULD NOT RELY ON IT, BUT SHOULD USE IT AS A STARTING POINT OF ANALYSIS, AND SHOULD INDEPENDENTLY CONFIRM THE ACCURACY OF THE INFORMATION CONTAINED HEREIN THROUGH A DUE DILIGENCE REVIEW OF THE BOOKS, RECORDS, FILES AND DOCUMENTS THAT CONSTITUTE RELIABLE SOURCES OF THE INFORMATION DESCRIBED HEREIN. LOGOS ARE FOR IDENTIFICATION PURPOSES ONLY AND MAY BE TRADEMARKS OF THEIR RESPECTIVE COMPANIES. NAI Farbman, INC. CA BRE LIC. #01990696.

.0126 ACRES
LAND / RETAIL



FOR SALE



NAI Farbman
Commercial Real Estate Services, Worldwide.

www.naifarbman.com

Nathan Casey
Vice President | 248.351.4391
casey@farbman.com

Daniel McCleary
Vice President | 248.351.4384
mccleary@farbman.com

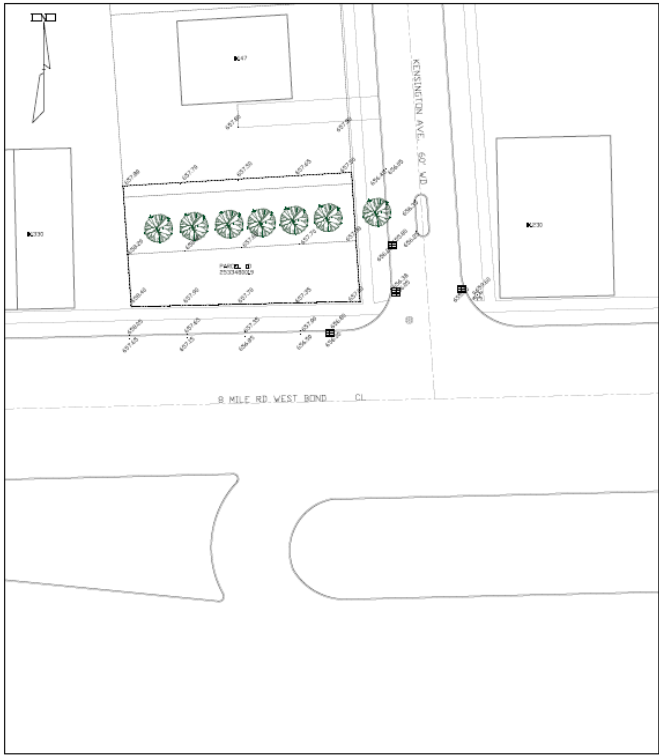
NO WARRANTY, EXPRESS OR IMPLIED, IS MADE AS TO THE ACCURACY OF THE INFORMATION CONTAINED HEREIN. THIS INFORMATION IS SUBMITTED SUBJECT TO ERRORS, OMISSIONS, CHANGE OF PRICE, RENTAL OR OTHER CONDITIONS, WITHDRAWAL WITHOUT NOTICE, AND IS SUBJECT TO ANY SPECIAL LISTING CONDITIONS IMPOSED BY OUR PRINCIPALS. COOPERATING BROKERS, BUYERS, TENANTS AND OTHER PARTIES WHO RECEIVE THIS DOCUMENT SHOULD NOT RELY ON IT, BUT SHOULD USE IT AS A STARTING POINT OF ANALYSIS, AND SHOULD INDEPENDENTLY CONFIRM THE ACCURACY OF THE INFORMATION CONTAINED HEREIN THROUGH A DUE DILIGENCE REVIEW OF THE BOOKS, RECORDS, FILES AND DOCUMENTS THAT CONSTITUTE RELIABLE SOURCES OF THE INFORMATION DESCRIBED HEREIN. LOGOS ARE FOR IDENTIFICATION PURPOSES ONLY AND MAY BE TRADEMARKS OF THEIR RESPECTIVE COMPANIES. NAI Farbman, INC. CA BRE LIC. #01990696.

.0126 ACRES
LAND / RETAIL



FOR SALE

EXISTING SITE PLAN



SETBACK CALCULATION		
ADDRESS	FRONT LOT LINE TO THE BUILDING	DISTANCE FROM THE BUILDING PROPERTY (FT)
1132	600	70
1140	440	0
1200	200	0
1330	20	0
1336	100	0
1360	150	0
1416	200	0
140	450	66

AVE. FRONT SETBACK=(70+0+0+0+0+0+66)/8
=16.25'

ZONING: C2 (General Commercial District)
LEGAL DESCRIPTION:
TIN. FILE SEC 33 KENDLWORTH SUB N 26.59 FT FRONT & N 23 FT REAR OF LOT 4, ALSO ALL OF LOT 5 2-22-95 FR 015 & 016
SITE PLAN
PROPERTY AREA: 5,487.2 SF =====> 0.126 AC
SETBACKS
REAR SETBACK: ABUTTING RESIDENTIAL 5'
SIDE SETBACK= 0'
FRONT SETBACK= 16.25'

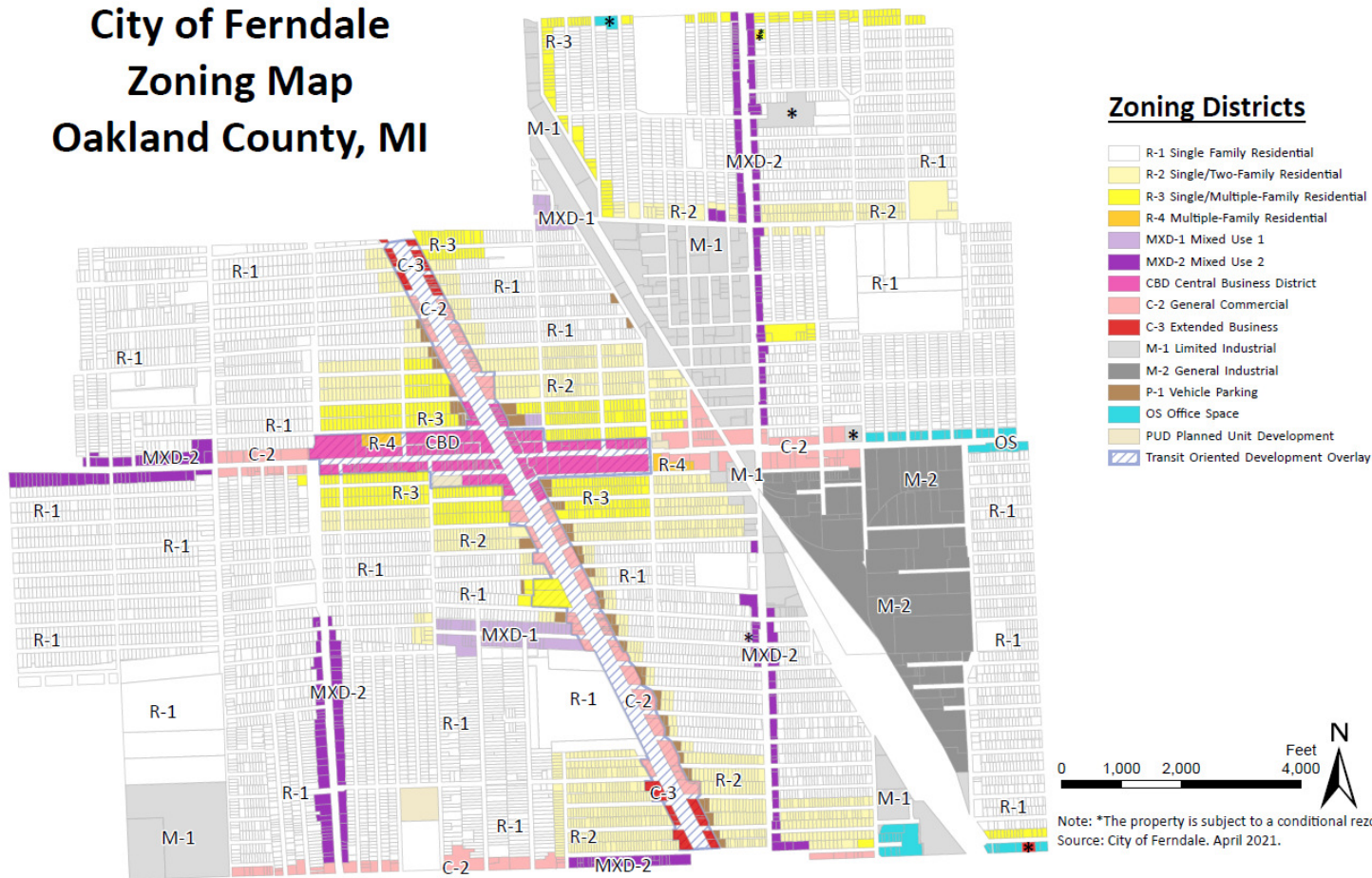
Benchmark
B AND W ON TOP OF FH AT
THE NE CORNER OF KING ST
AND B MILE RD: 65940

.0126 ACRES
LAND / RETAIL



FOR SALE

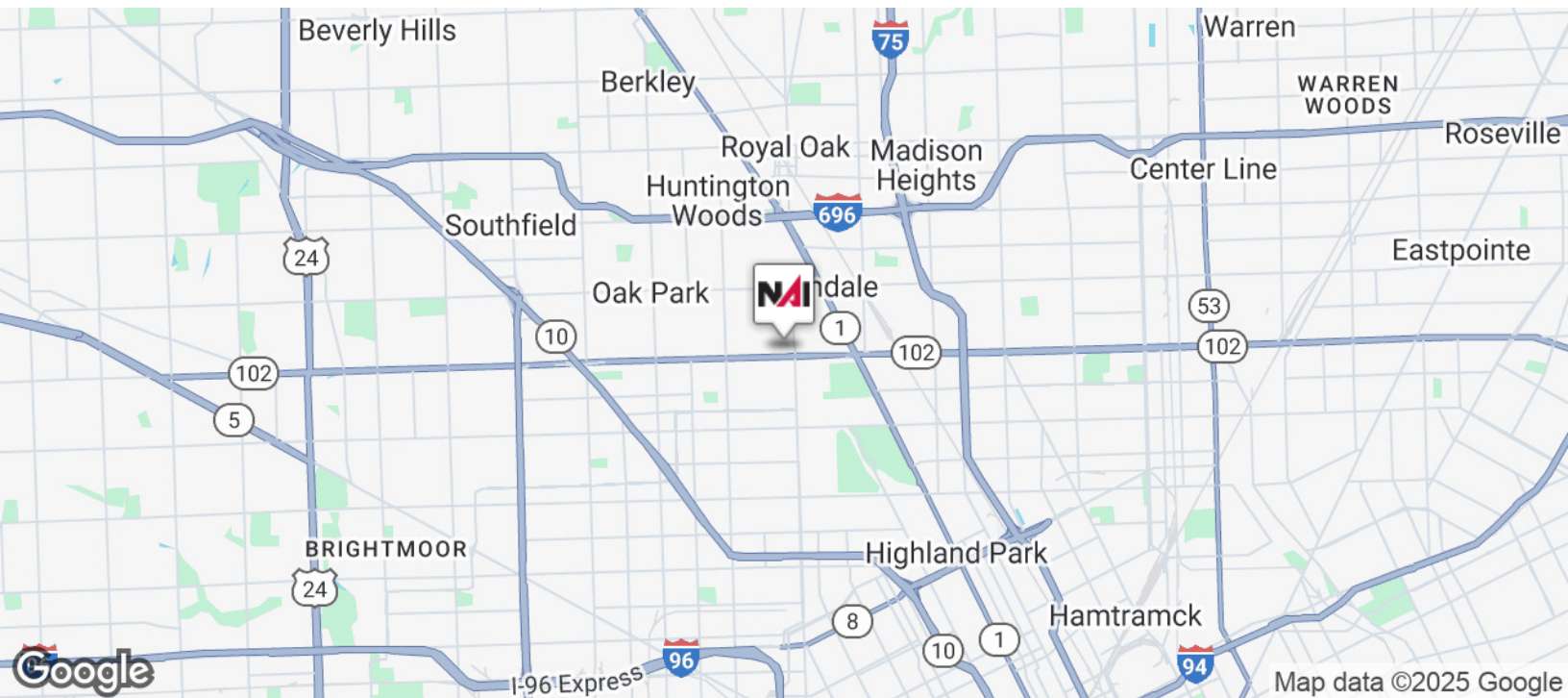
City of Ferndale Zoning Map Oakland County, MI



.0126 ACRES
LAND / RETAIL



FOR SALE



Commercial Real Estate Services, Worldwide.

www.naifarbman.com

Nathan Casey

Vice President | 248.351.4391
casey@farbman.com

Daniel McCleary

Vice President | 248.351.4384
mccleary@farbman.com

NO WARRANTY, EXPRESS OR IMPLIED, IS MADE AS TO THE ACCURACY OF THE INFORMATION CONTAINED HEREIN. THIS INFORMATION IS SUBMITTED SUBJECT TO ERRORS, OMISSIONS, CHANGE OF PRICE, RENTAL OR OTHER CONDITIONS, WITHDRAWAL WITHOUT NOTICE, AND IS SUBJECT TO ANY SPECIAL LISTING CONDITIONS IMPOSED BY OUR PRINCIPALS. COOPERATING BROKERS, BUYERS, TENANTS AND OTHER PARTIES WHO RECEIVE THIS DOCUMENT SHOULD NOT RELY ON IT, BUT SHOULD USE IT AS A STARTING POINT OF ANALYSIS, AND SHOULD INDEPENDENTLY CONFIRM THE ACCURACY OF THE INFORMATION CONTAINED HEREIN THROUGH A DUE DILIGENCE REVIEW OF THE BOOKS, RECORDS, FILES AND DOCUMENTS THAT CONSTITUTE RELIABLE SOURCES OF THE INFORMATION DESCRIBED HEREIN. LOGOS ARE FOR IDENTIFICATION PURPOSES ONLY AND MAY BE TRADEMARKS OF THEIR RESPECTIVE COMPANIES. NAI Farbman, INC. CA BRE LIC. #01990696.

.0126 ACRES LAND / RETAIL



FOR SALE



Map data ©2024 Imagery ©2024 Airbus, CNES / Airbus, Landsat / Copernicus, Maxar Technologies

.0126 ACRES LAND / RETAIL



FOR SALE



POPULATION

	1 MILE	3 MILES	5 MILES
Total Population	17,299	146,313	382,412
Average Age	41	40	40
Average Age (Male)	39	39	39
Average Age (Female)	42	42	42

HOUSEHOLDS & INCOME

	1 MILE	3 MILES	5 MILES
Total Households	8,185	64,141	163,172
# of Persons per HH	2.1	2.3	2.3
Average HH Income	\$88,812	\$85,548	\$77,487
Average House Value	\$225,255	\$212,623	\$188,942

Demographics data derived from AlphaMap