



FULLERTON BUSINESS CENTER

WINDELL
INVESTMENTS INC.

CBRE



SITE PLAN

PROJECT HIGHLIGHTS

±159,806 SQUARE FEET



HIGH IMAGE CORPORATE ENVIRONMENT



PROFESSIONAL MANAGEMENT



EXTENSIVE GLASS LINE



PREMIER ORANGETHORPE AVENUE FRONTAGE



EASY ACCESS TO 91, 57, 5, 55, AND 22 FREEWAYS



ABUNDANT PARKING



OFFICE, INDUSTRIAL, AND FLEX UNITS



AVAILABLE - OFFICE

1501 E ORANGETHORPE AVE, SUITE 120

±2,728 SQUARE FEET

\$2.35 FSG ASKING RATE

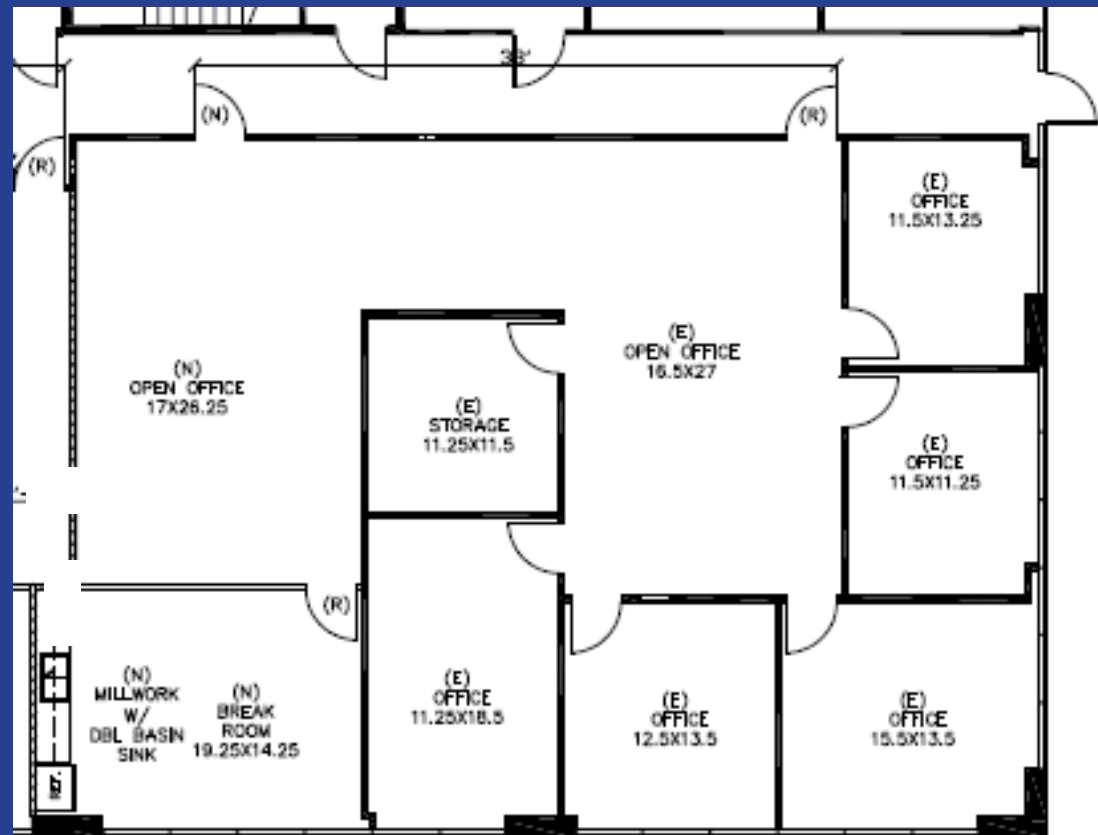
5 Offices

Kitchen

Large Open Area

Storage

Available - 30 days



AVAILABLE - OFFICE

1501 E ORANGETHORPE AVE, SUITE 130

±1,543 SQUARE FEET

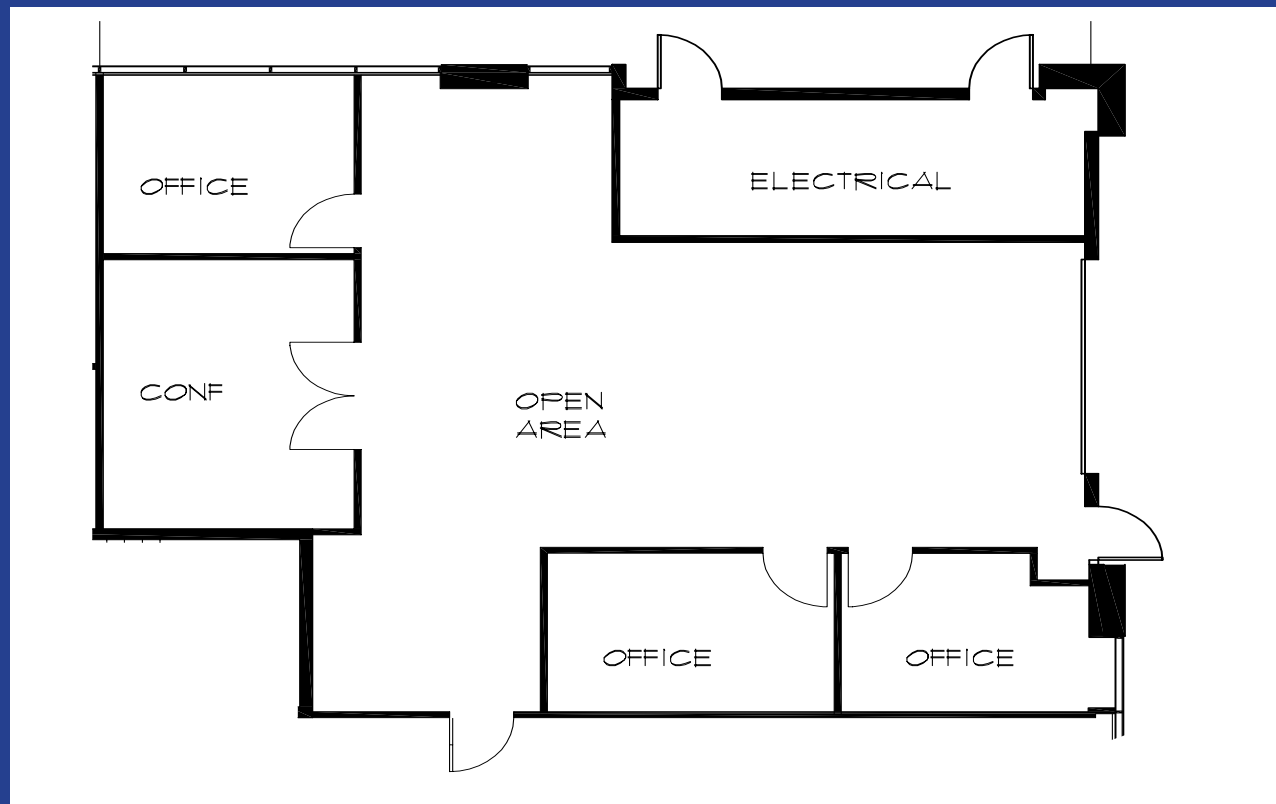
\$2.35 FSG ASKING RATE

4 Offices

Open Ceilings

Large Open Area

Roll Up Doors



AVAILABLE - OFFICE

1561 E ORANGETHORPE AVE, SUITE 220

±1,669 SQUARE FEET

\$2.35 FSG ASKING RATE

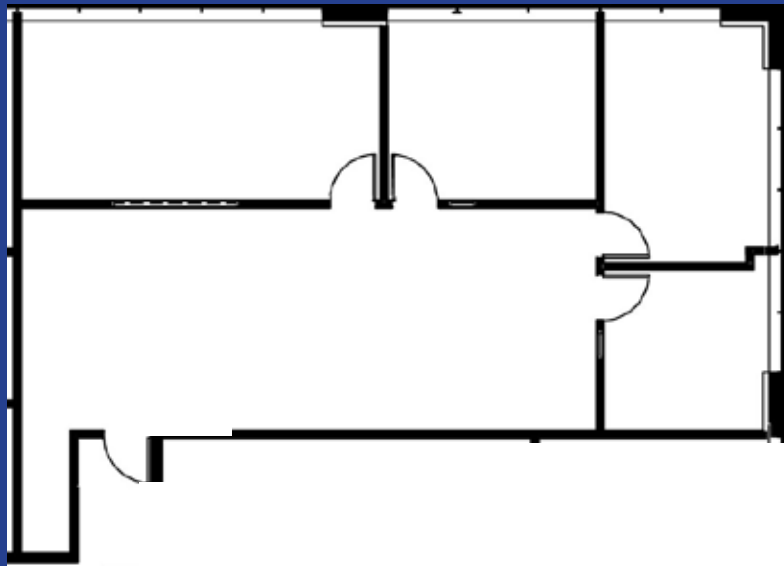
3 Offices

Move in Ready Suite

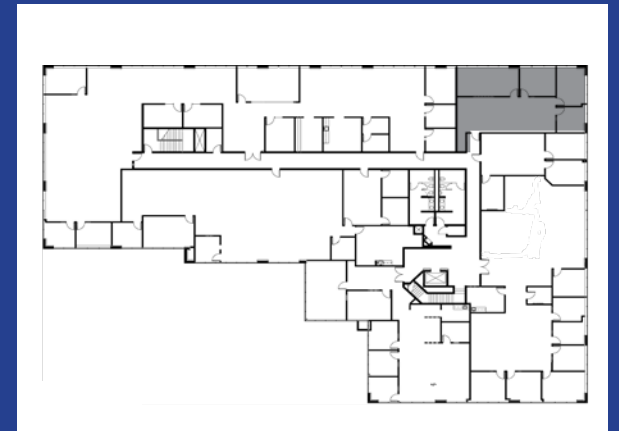
Conference Room

Available - 30 days

Large Open Area



KEY MAP



AVAILABLE - OFFICE

1561 E ORANGETHORPE AVE, SUITE 260

±4,750 SQUARE FEET

\$2.35 FSG ASKING RATE

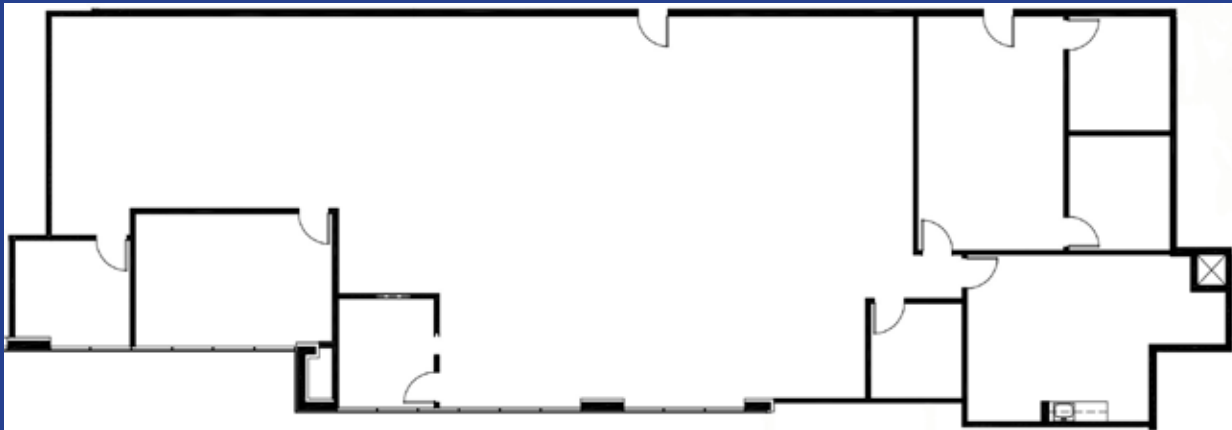
4 Offices

Conference Room

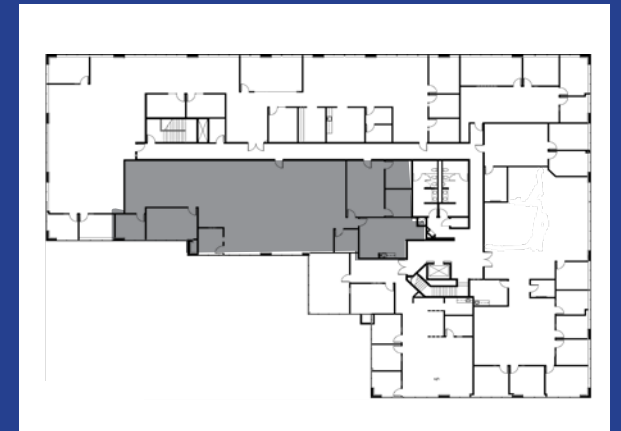
Kitchen

Large Open Area

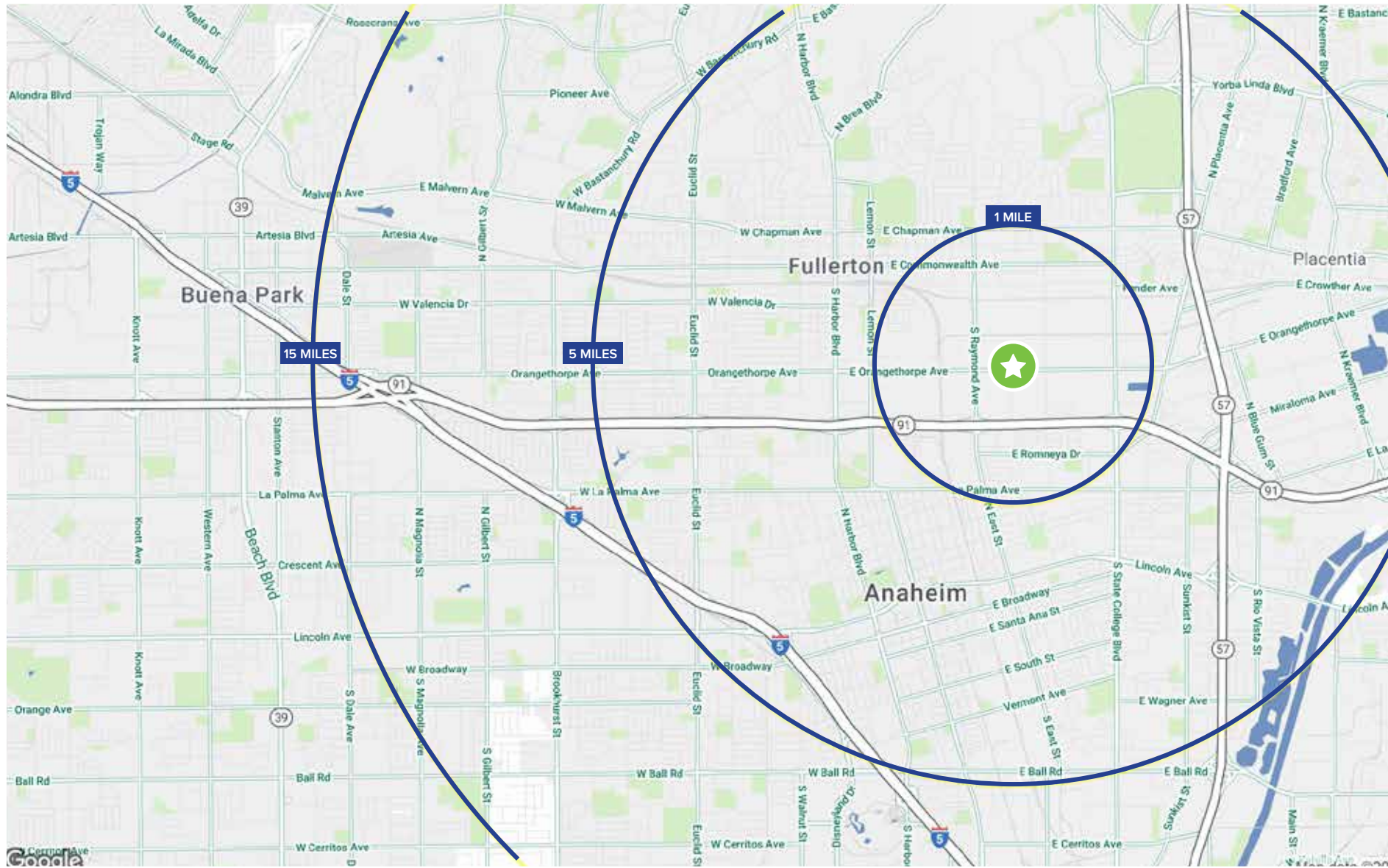
Server Room



KEY MAP



LOCATION MAP





CONTACTS

OFFICE

TAYLOR FRIEND

LIC. 01885394

+1 714 371 9241

TAYLOR.FRIEND@CBRE.COM

INDUSTRIAL

CHRIS EHRLICH

LIC. 01450093

+1 562 968 1160

CHRIS.EHRLICH@CBRE.COM

© 2026 CBRE, Inc. All rights reserved. This information has been obtained from sources believed reliable, but has not been verified for accuracy or completeness. You should conduct a careful, independent investigation of the property and verify all information. Any reliance on this information is solely at your own risk. CBRE and the CBRE logo are service marks of CBRE, Inc. All other marks displayed on this document are the property of their respective owners, and the use of such logos does not imply any affiliation with or endorsement of CBRE. Photos herein are the property of their respective owners. Use of these images without the express written consent of the owner is prohibited.