

COTTONWOOD PLAZA

OFFICE SPACE FOR LEASE | 350 N MITCHEL ST, BOISE, ID 83704



CONTACT



KEKAULA KANIHO

208.947.0853

kekaula@tokcommercial.com

HIGHLIGHTS



A raised data center floor, a backup generator, and UPS are available.

Great location just off Mitchell and Emerald Street.

Ample parking with 5 spaces per 1000 SF of space leased.

Building signage is negotiable.

Fiber to building and premises.

Contact agent for showings.

DETAILS

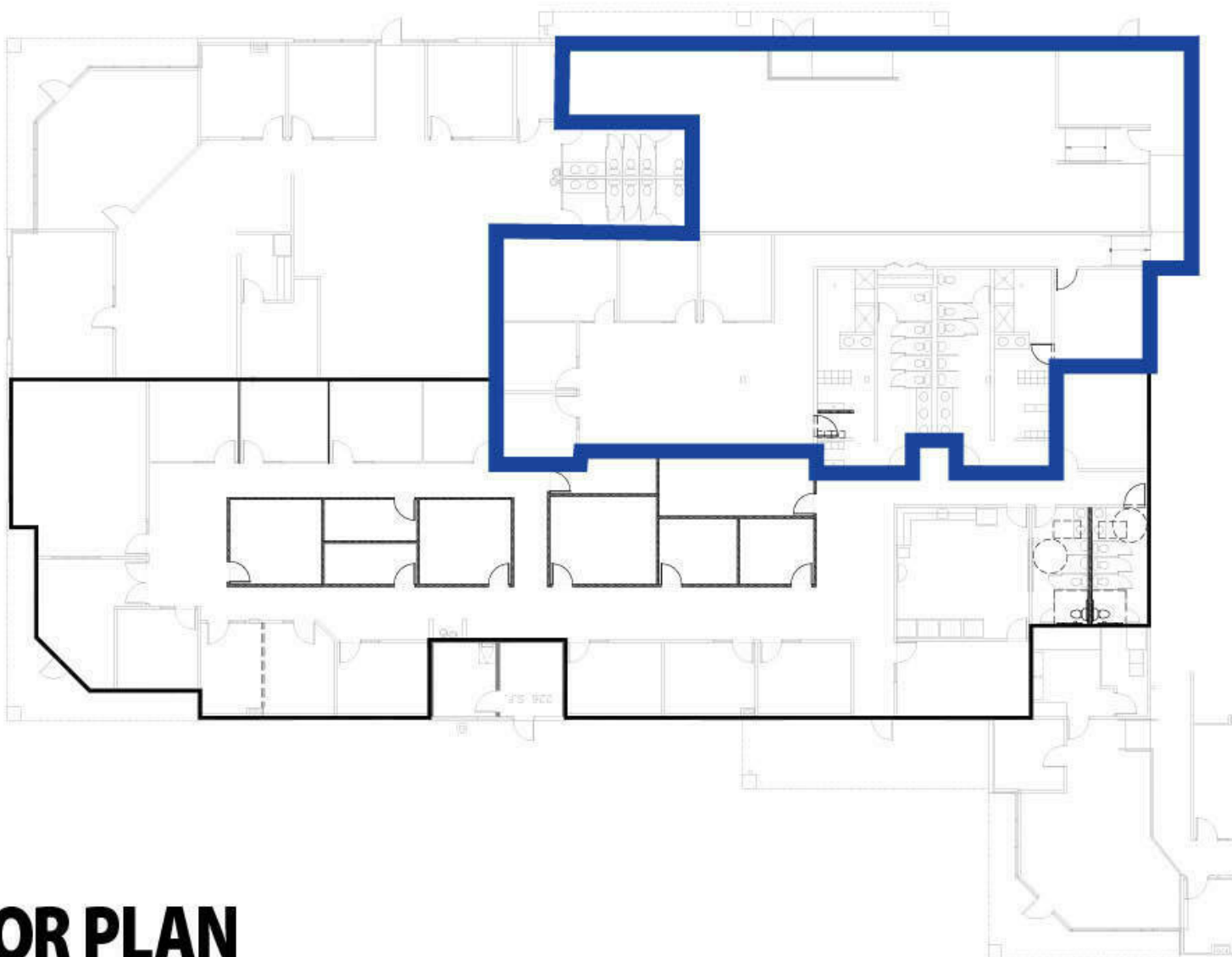


BLDG SIZE:	43,426 SF
AVAILABLE SIZE:	5,625 SF
AVAILABLE SPACE:	Suite 398-A
LEASE RATE:	\$13.00/SF/yr
EST. NNN:	\$6.00/SF/yr
AVAILABLE:	Now

UPDATED: NOVEMBER 07, 2025

THIS PROPERTY IS EXCLUSIVELY MARKETING BY TOK BOISE LLC DBA TOK COMMERCIAL

This information was obtained from sources believed reliable but cannot be guaranteed. Any opinions or estimates are used for example only.



FLOOR PLAN

UPDATED: NOVEMBER 07, 2025

THIS PROPERTY IS EXCLUSIVELY MARKETING BY TOK BOISE LLC DBA TOK COMMERCIAL

This information was obtained from sources believed reliable but cannot be guaranteed. Any opinions or estimates are used for example only.



UPDATED: NOVEMBER 07, 2025

THIS PROPERTY IS EXCLUSIVELY MARKETING BY TOK BOISE LLC DBA TOK COMMERCIAL

This information was obtained from sources believed reliable but cannot be guaranteed. Any opinions or estimates are used for example only.



UPDATED: NOVEMBER 07, 2025

THIS PROPERTY IS EXCLUSIVELY MARKETING BY TOK BOISE LLC DBA TOK COMMERCIAL

This information was obtained from sources believed reliable but cannot be guaranteed. Any opinions or estimates are used for example only.