



ROLAND PARK SHOPPING CENTER

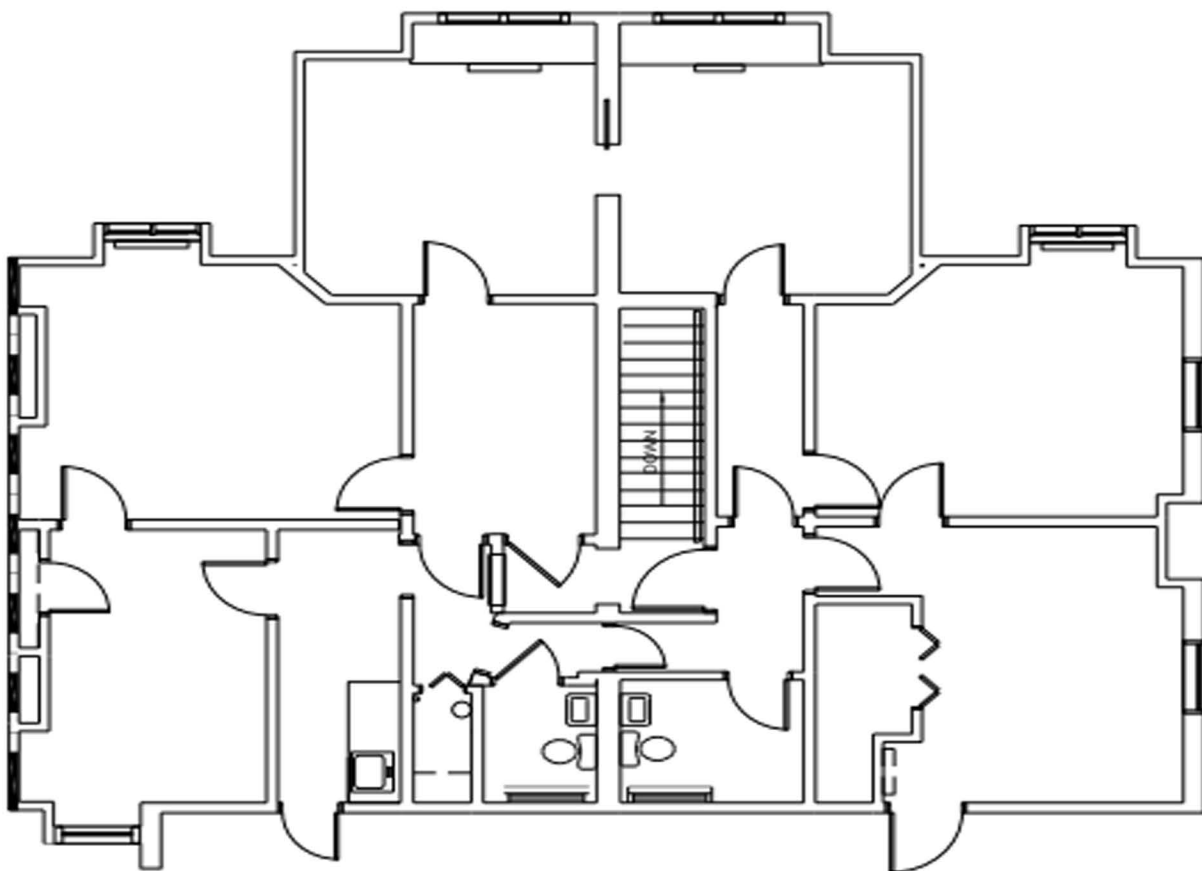
- Roland Park is the first planned "suburban" community in North America.
- Opened in 1907 to serve the community, located at the corner of Upland & Roland Ave's
- It has been credited by Guinness World Records as the world's first shopping center.

- Suite 300: +/- 1,625 SF Available
- Great Office Space in a One Of a Kind Building
- Current Tenants Include Johnny's Restaurant, Petit Louis,
- Bank of America, Lisette Spa, Pig & The Parrot & Eddie Jacobs

Tricia Holloway
Tel: 561-202-5003
Email: tricia@wardrealestatellc.com



ROLAND PARK SHOPPING CENTER



1 MARKETING PLAN-1,625 SF
ID-1 1/8"=1'-0"



Tricia Holloway
Tel: 561-202-5003

Email: tricia@wardrealestatellc.com

