



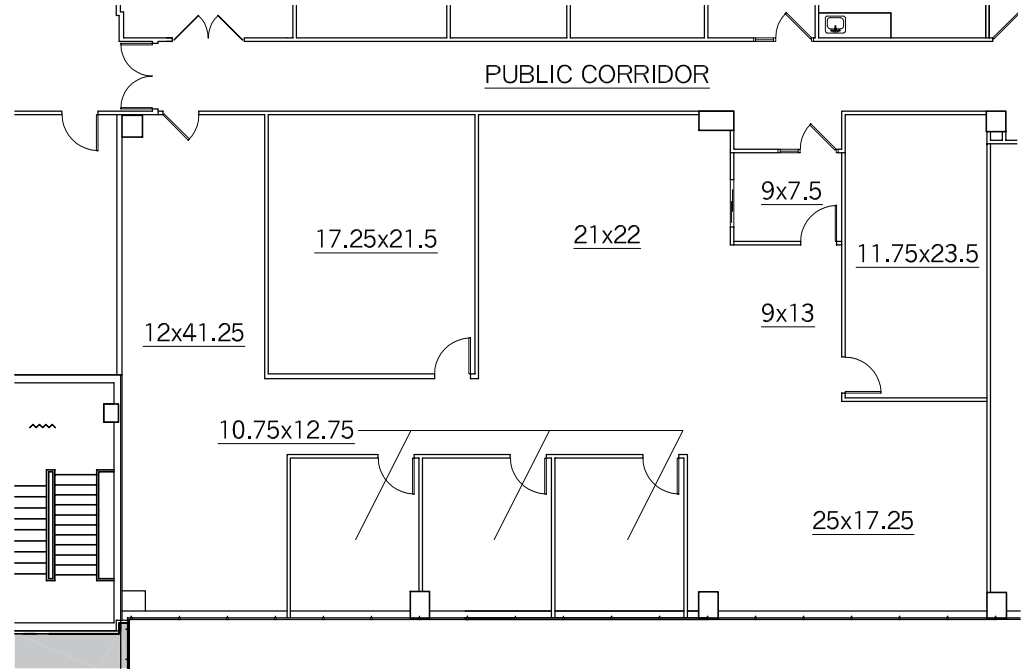
BINGHAM OFFICE CENTER

BINGHAM FARMS, MI 48025

CONTACT:

SHEILA FOGARTY (248) 686-5982

- * Newly renovated complex
- * 24 hour security system
- * After hours security guard on site
- * Cafe, Sundry shop and ATM
- * Professional on site management and maintenance
- * Efficient energy management system
- * Ample parking
- * Easy access to all major thorough fares

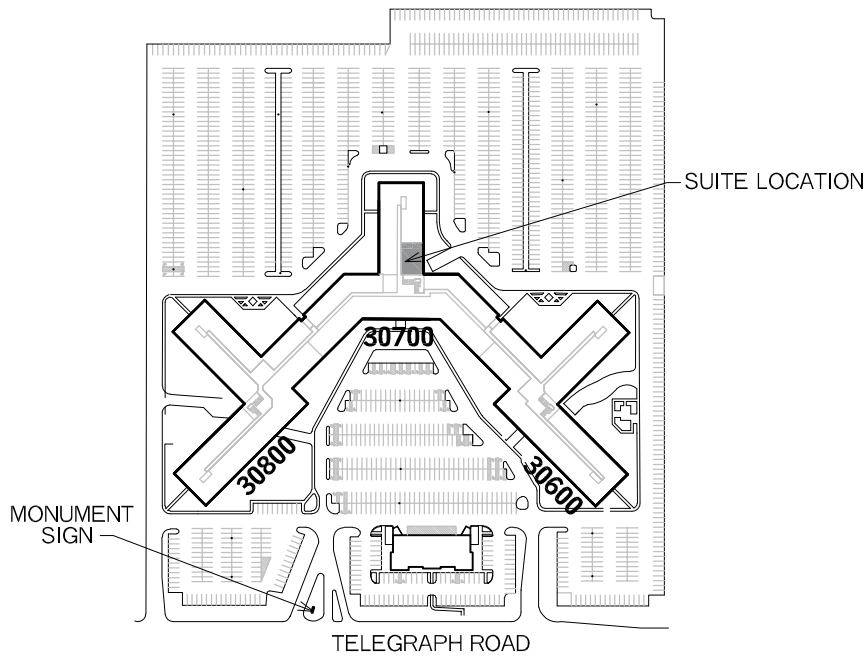


SUITE 2501

3,360 R.S.F.

SCALE: 1/16" = 1'-0"

NOTE: ALL ROOM SIZES ARE APPROXIMATE



KEY PLAN

NO SCALE

NAI Farberman

Commercial Real Estate Services, Worldwide.