



Adaptive reuse office/ retail space in historic mill

- Exposed brick, high ceilings and sleek concrete floors
- Ample natural light with floor to ceiling windows
- Direct access to the Swamp Rabbit Trail
- Less than two miles from Downtown Greenville

Get more information

Ned Reynolds

Vice President - Office Team
D 336 260 3148
ned.reynolds@avisonyoung.com

Chris Prince, MBA, LEED® Green Associate™

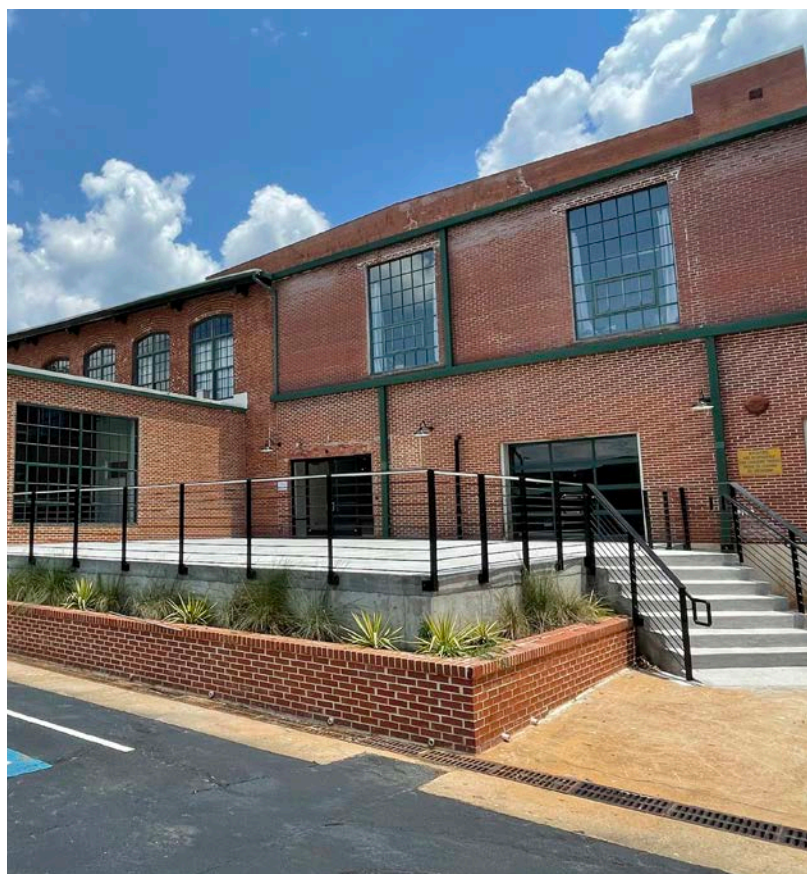
Vice President - Office Team
D 864 430 4957
chris.prince@avisonyoung.com

Will Hannah

Associate - Office Team
D 864 508 4525
will.hannah@avisonyoung.com

Office/retail space for lease

201 Smythe Street



Property Description

Set in a former textile mill, The Lofts of Greenville offer unmatched spaces for live, work and play. The building's rich history shines through in the stunning industrial architecture as exposed brick, high ceilings, and sleek concrete floors take on new life. The property sits adjacent to 22 miles of the Swamp Rabbit Trail. Hop on the path right across the street from your new office.

Property specs

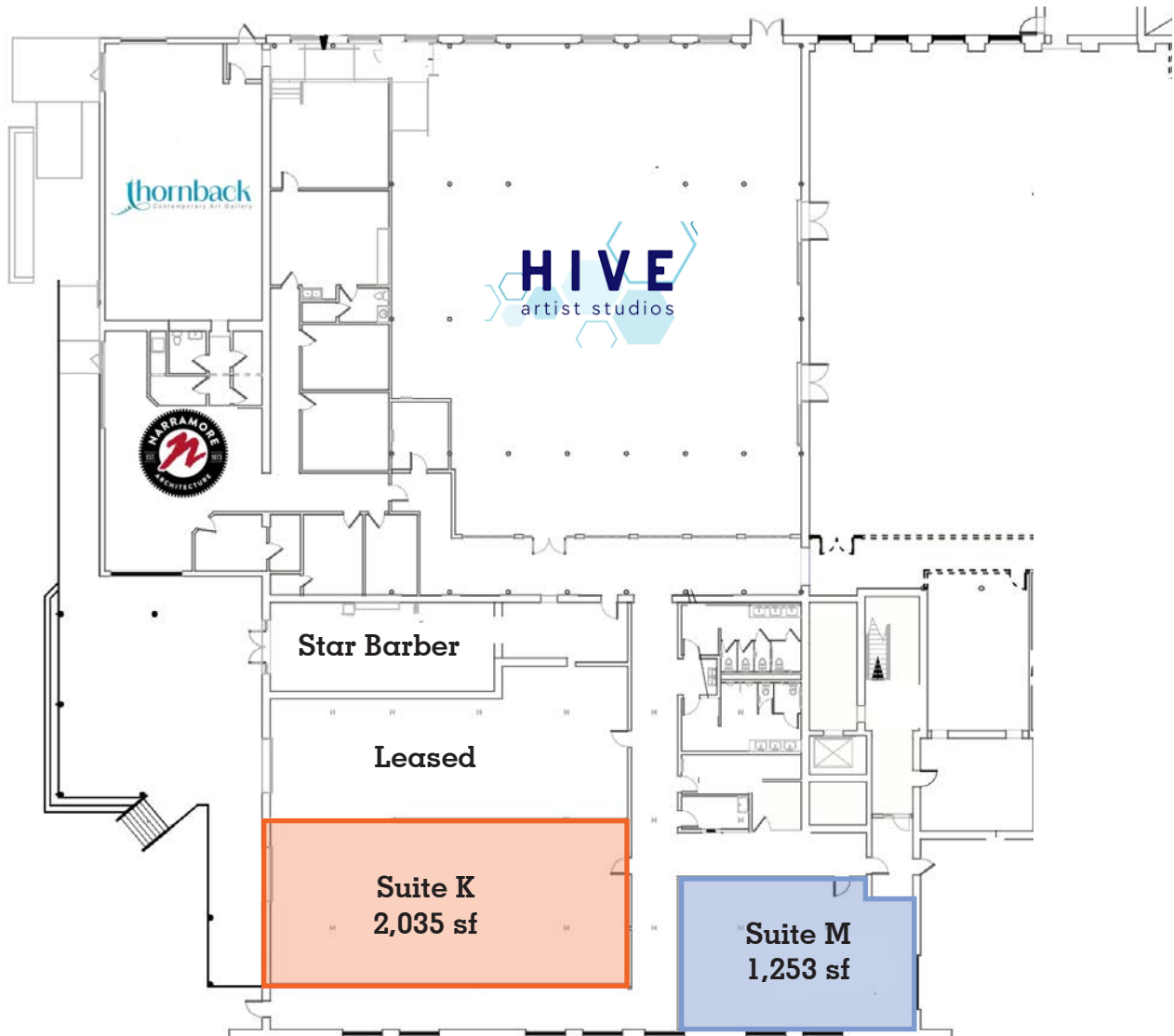
Address	201 Smythe Street Greenville, SC 29611
Lot size	±16.81 acres
Municipality	Greenville
Zoning	PD - Greenville County
Building size	±51,998 sf
Lease rate	\$20-22 sf/year (Full service)

Available spaces

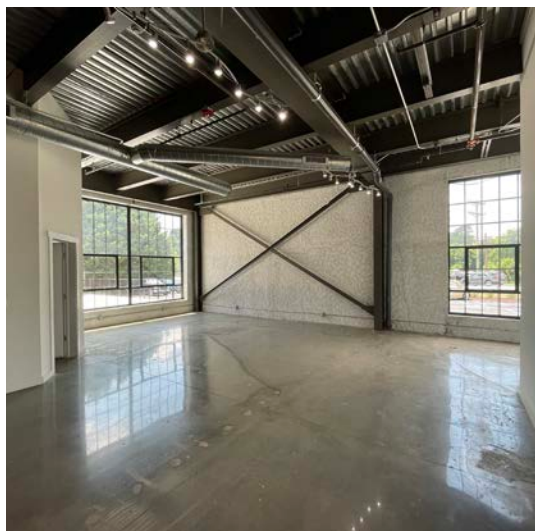
Suite K	±2,035 sf
Suite M	±1,253 sf
Suite N	±1,689 sf

Site plan

201 Smythe Street

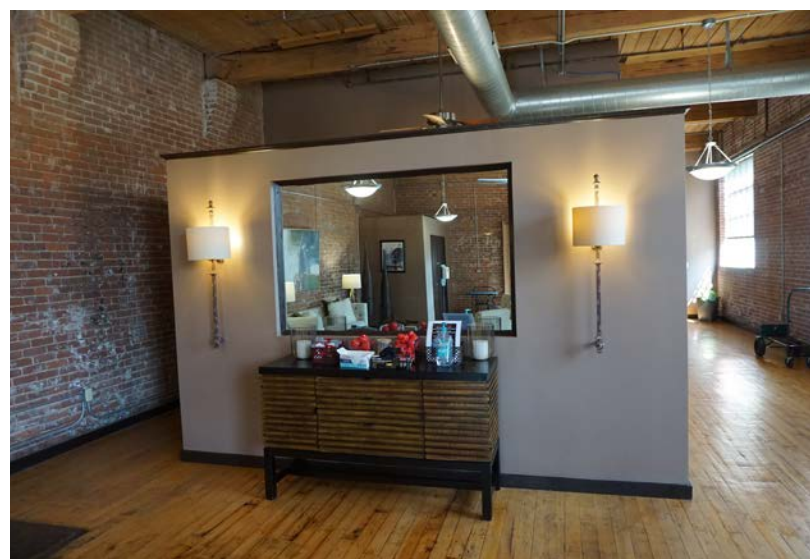
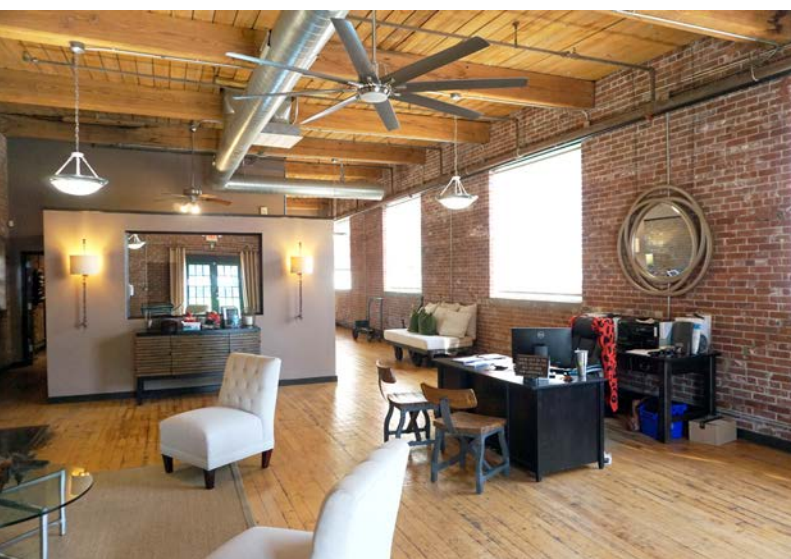
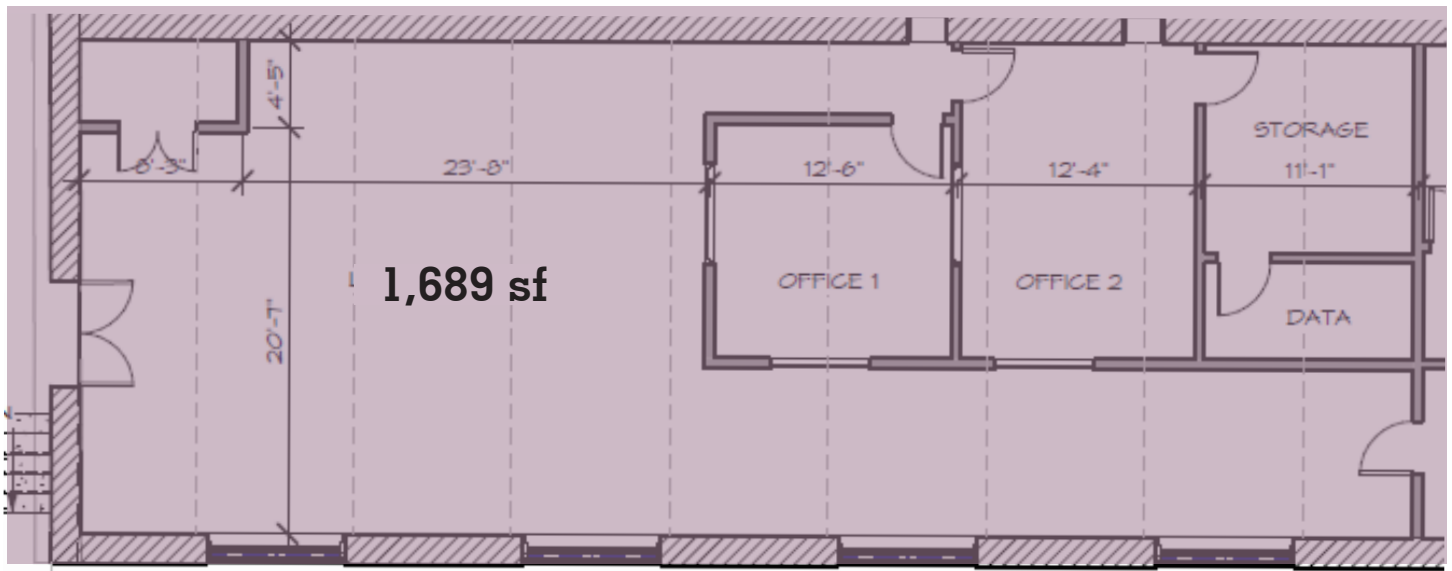


Interior photos



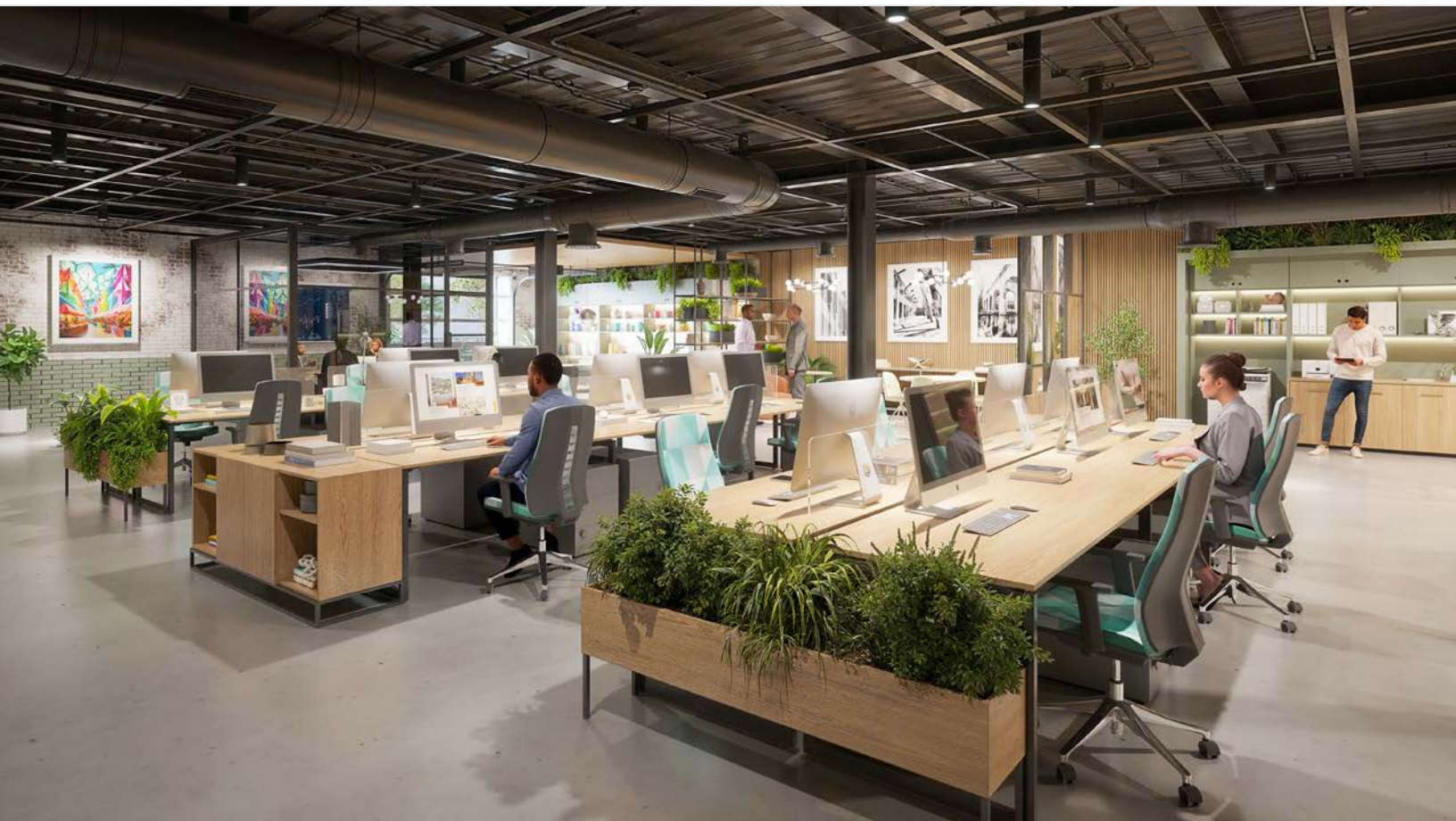
Suite N

201 Smythe Street



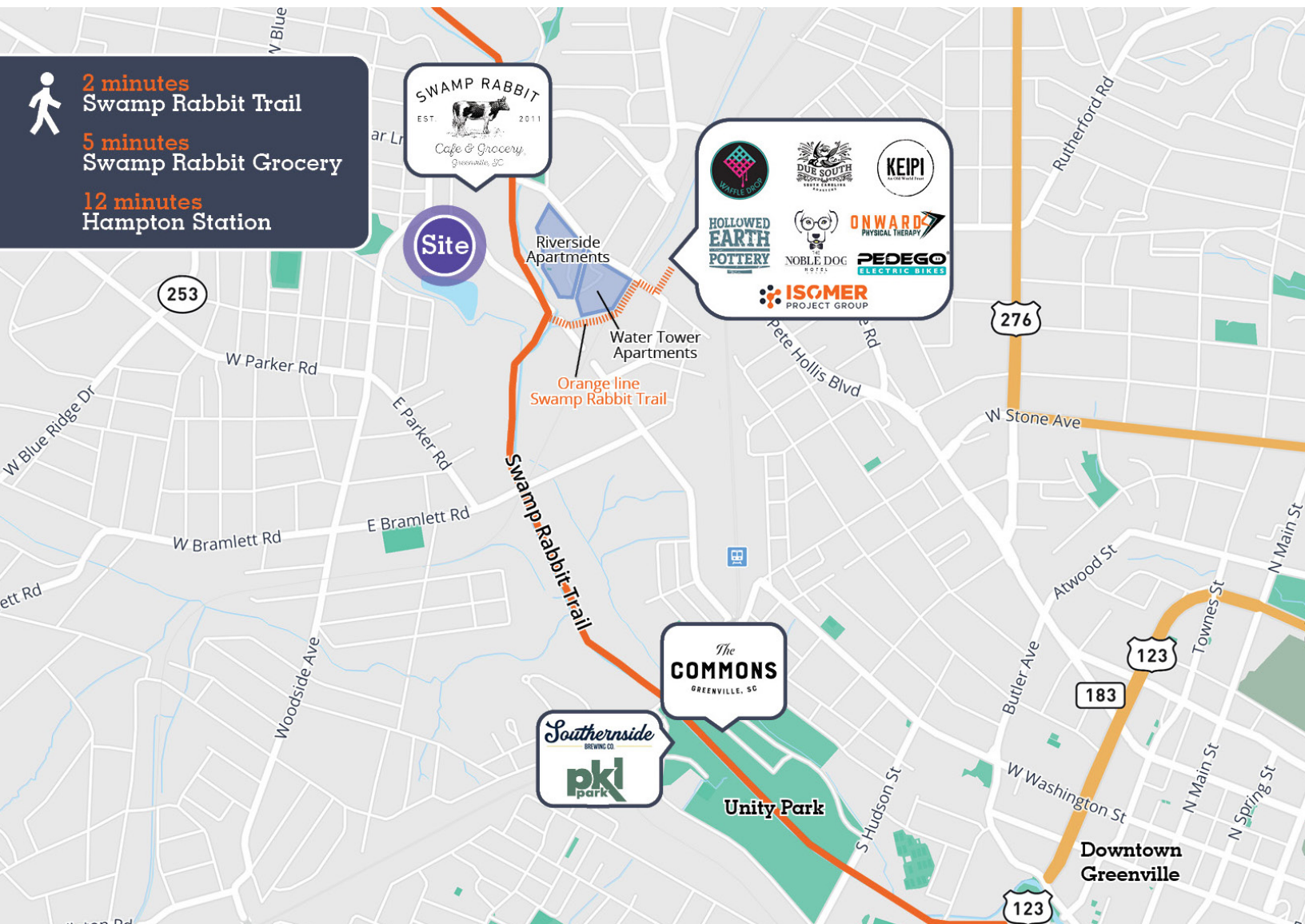
Conceptual renderings

201 Smythe Street



Location

201 Smythe Street



Demographics

Population	3 Miles	5 Miles	8 Miles
Total population	75,651	154,423	275,268
Average age	39	39	40
Average age (Male)	38	38	39
Average age (Female)	40	40	41

Households & Income	3 Miles	5 Miles	8 Miles
Total population	32,062	64,825	114,098
# of Persons per HH	2.4	2.4	2.4
Average HH Income	\$81,254	\$89,410	\$92,581
Average House Value	\$348,031	\$365,772	\$358,487

Demographics derived from Alpha Map



Let's talk.

Ned Reynolds

Vice President - Office Team
D 336 260 3148
ned.reynolds@avisonyoung.com

Chris Prince, MBA,
LEED® Green Associate™

Vice President - Office Team
D 864 430 4957
chris.prince@avisonyoung.com

Will Hannah

Associate - Office Team
D 864 508 4525
will.hannah@avisonyoung.com

Avison Young - Greenville | 864 334 4145
656 S. Main Street, Suite 200 | Greenville, SC 29401

© 2025, Avison Young. Information contained herein was obtained from sources deemed reliable and, while thought to be correct, have not been verified. Avison Young does not guarantee the accuracy or completeness of the information presented, nor assumes any responsibility or liability for any errors or omissions therein.

**AVISON
YOUNG**