

NOW LEASING: RETAIL / OFFICE / MEDICAL / COMMERCIAL SPACE IN WEST PALM BEACH

UNDER NEW MANAGEMENT!



4047 Okeechobee Boulevard • West Palm Beach • Florida

PROPERTY HIGHLIGHTS

- **Booming neighborhood center with frontage on Okeechobee Blvd.**
- **Unmatched exposure with a daily traffic volume of more than 65,000 cars**
- **Well located immediately west of I-95 and east of Military Trail and the Turnpike**
- **Tenants enjoy close proximity to Downtown West Palm Beach, the Palm Beach Outlets, and much more!**
- **Strong demographics with a population of $\pm 259,000$ and an average household income of $\pm \$70,000.00$ in the 5-mile radius**
- **Join a diverse mix of professional, medical, retail and restaurant tenants at the Tree of Life Plaza!**

SPACE AVAILABILITY

- Suite 106-107 – 1,810 SF
- Suite 118 – 758 SF
- Suite 122-123 – 1,800 SF

**RENTAL RATES STARTING FROM
\$25.00 PSF NNN + \$8.47 PSF CAM**



Thomas R. Gibson, Broker
561.776.9300
trg@assetspecialists.com



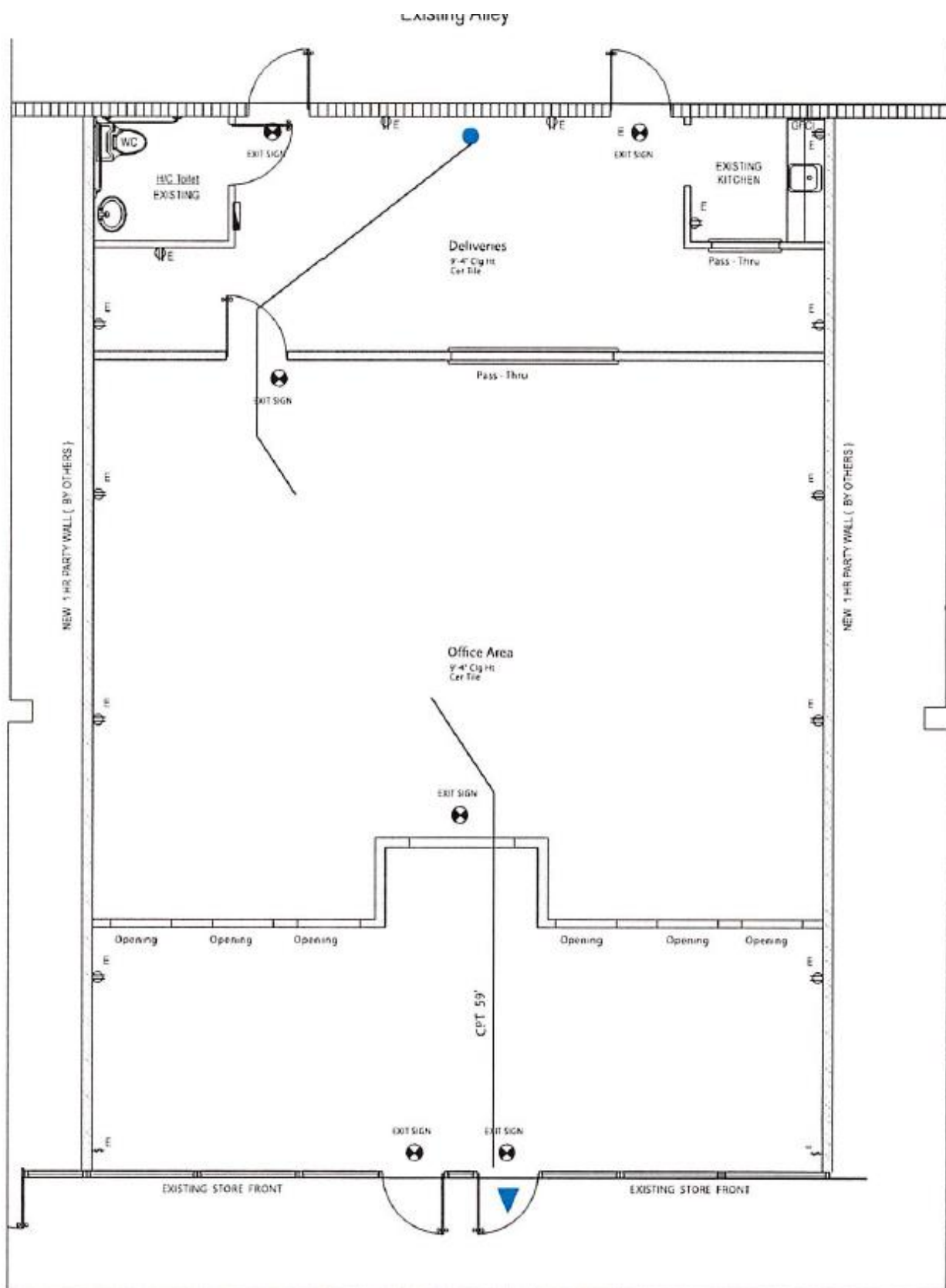
ASSET
SPECIALISTS, INC.

Asset Specialists, Inc.
3710 Buckeye Street • Suite 100
Palm Beach Gardens, FL 33410



FLOOR PLAN

4047 Okeechobee Blvd, Suite 106-107 – 1,810 Square Feet



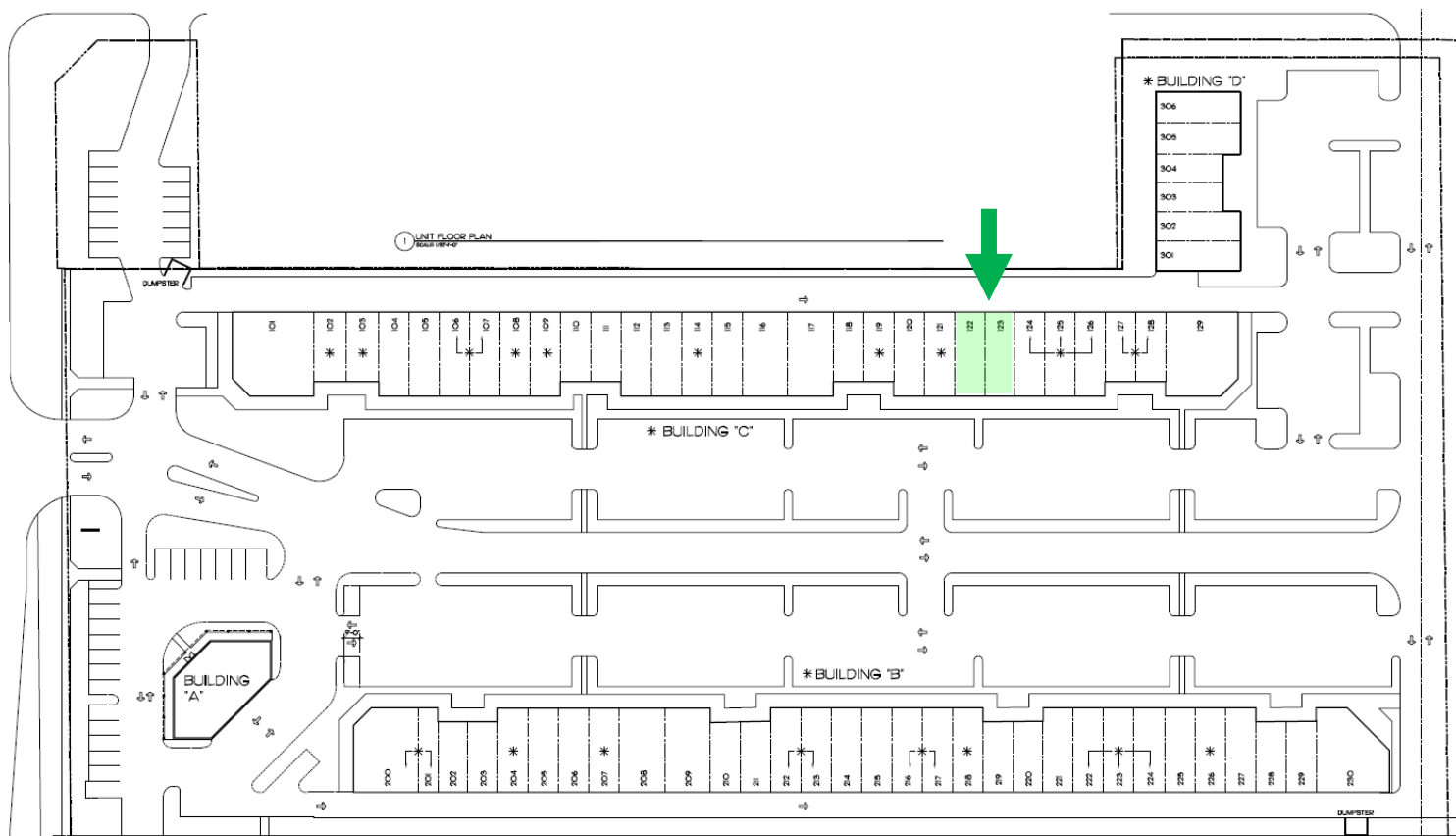
subject to errors, omissions, prior sale or lease, change in price and withdrawal



FLOOR PLAN

4047 Okeechobee Blvd, Suite 122-123 – 1,800 Square Feet

Okeechobee Blvd



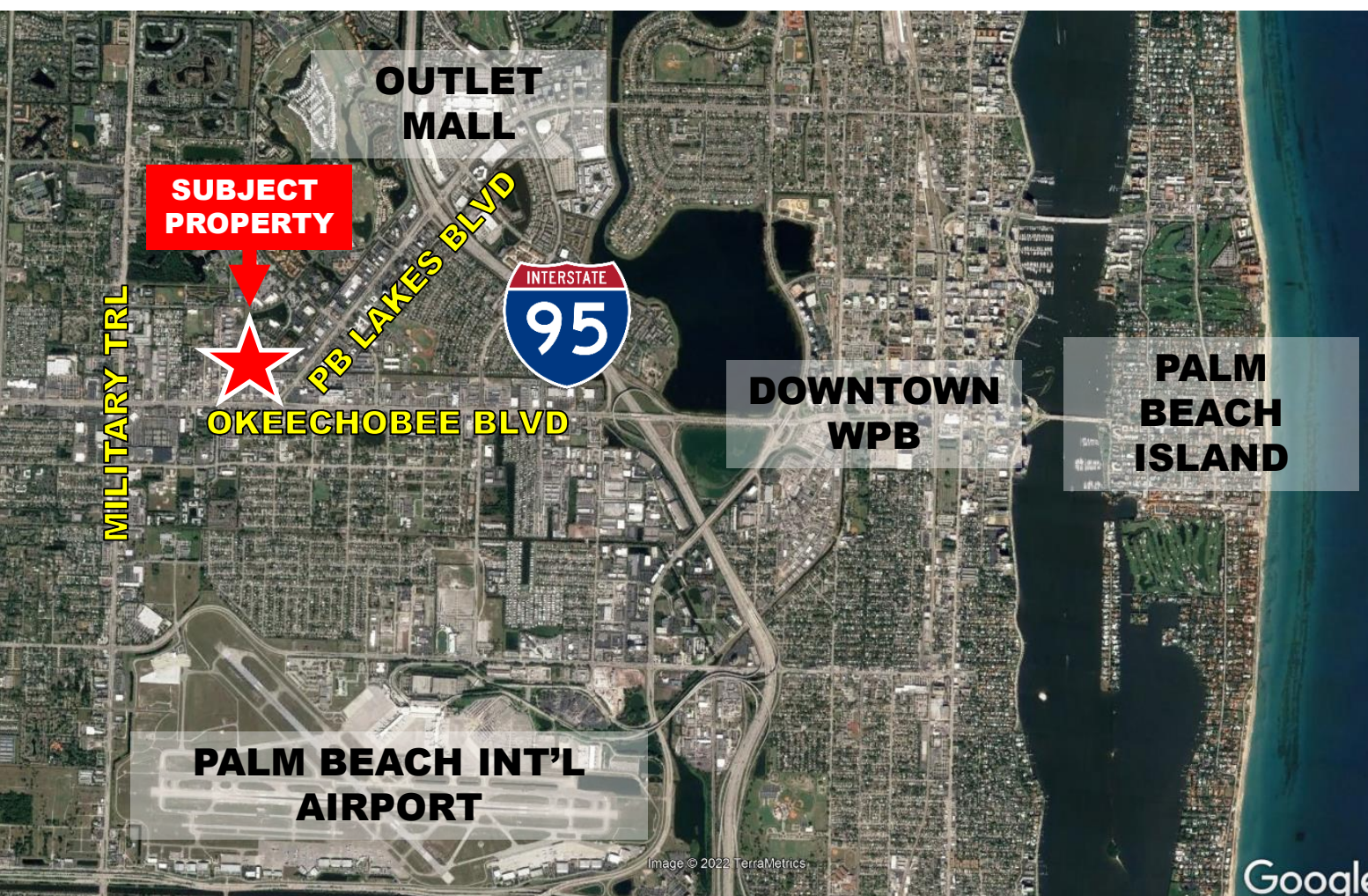
subject to errors, omissions, prior sale or lease, change in price and withdrawal

Thomas R. Gibson, Broker • 561.776.9300 • trg@assetspecialists.com • www.AssetSpecialists.com



LOCATION INFORMATION

Direct Access to I-95 • Prime West Palm Beach Location!



subject to errors, omissions, prior sale or lease, change in price and withdrawal



A S S E T
SPECIALISTS, INC.
Commercial Real Estate Services

Asset Specialists, Inc.
3710 Buckeye Street • Suite 100
Palm Beach Gardens • FL • 33410

Thomas R. Gibson, Broker
561.776.9300
www.AssetSpecialists.com

Darryn Dunn, Senior Director
561.776.9300
dwd@assetspecialists.com