

Industrial | For Sublease

CBRE

# 6201 27th Street

Sacramento, CA

±23,000 SF INDUSTRIAL BUILDING AVAILABLE FOR SUBLEASE | CAN BE LEASED TOGETHER WITH 6161 27TH STREET (±21,000 SF)



Tyler Howell

Senior Associate

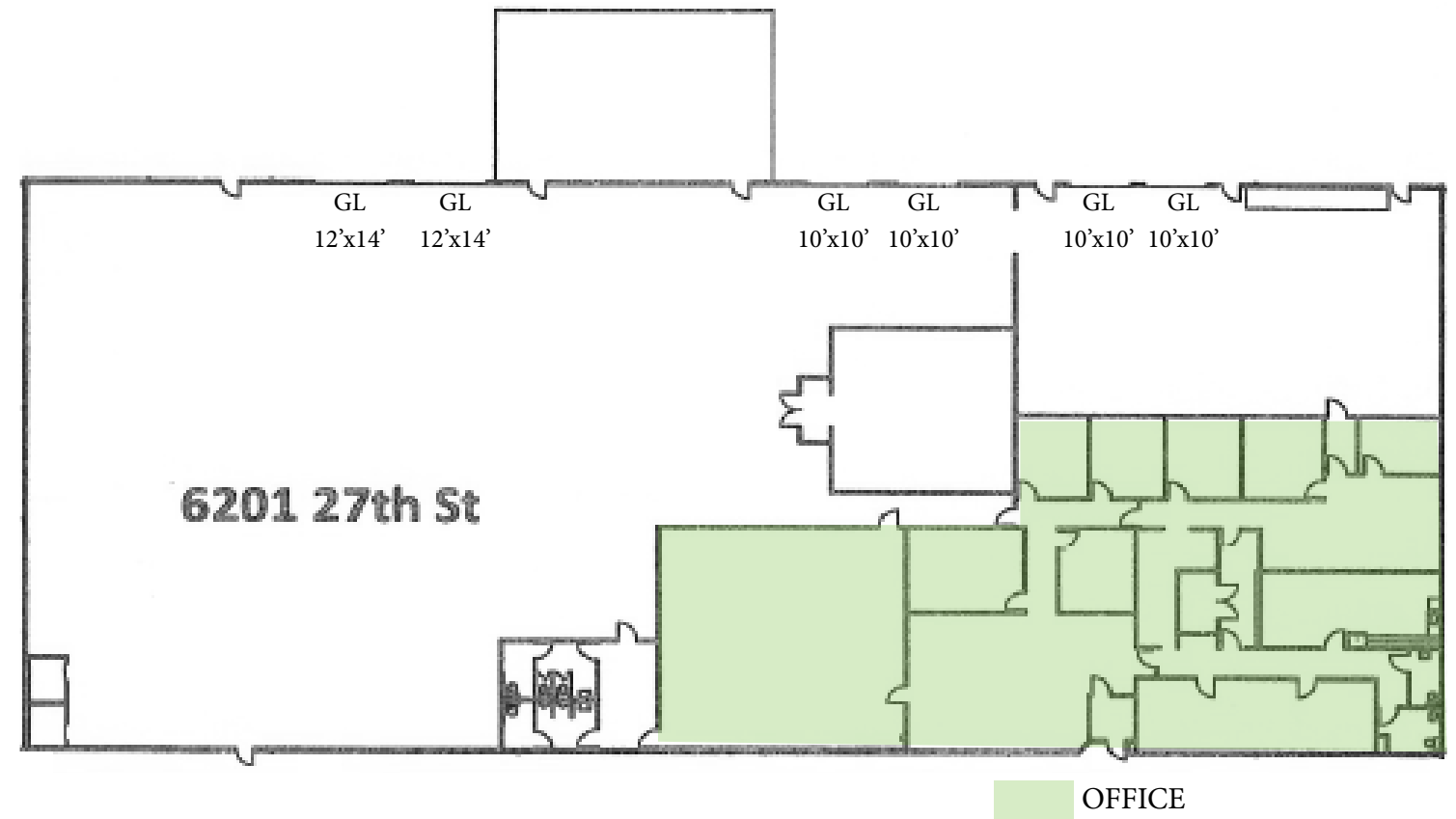
C: 916 781 4835

tyler.howell1@cbre.com

Lic. 02100245

# Property Highlights & Floor Plan

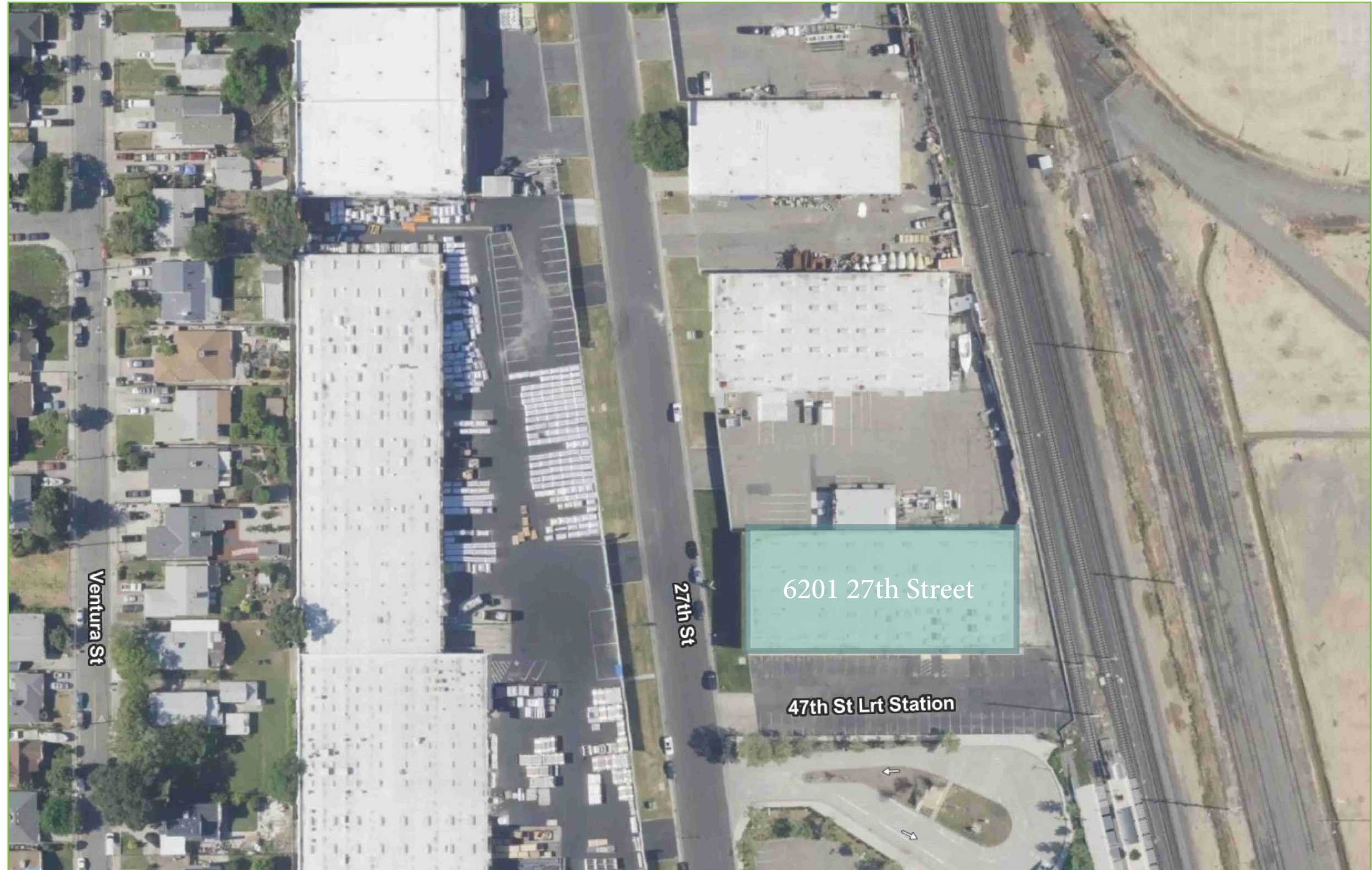
- + ± 23,000 RSF Available
- + ±7,000 SF of High End Office Improvements
- + Six (6) (±12' x 14') Grade Level Doors
- + ± 20' Minimum Clear Height
- + ± 24' x 48' Column Spacing
- + 23-Phase Power
- + ±2,800 SF Fenced/Paved Yard (ability to expand)
- + Direct Access to Highway 99
- + Fenced, Gated, Secured
- + Zoned M-1
- + Master Lease Runs Through May 31, 2027



6201 27th Street  
Sacramento, CA

For Sublease

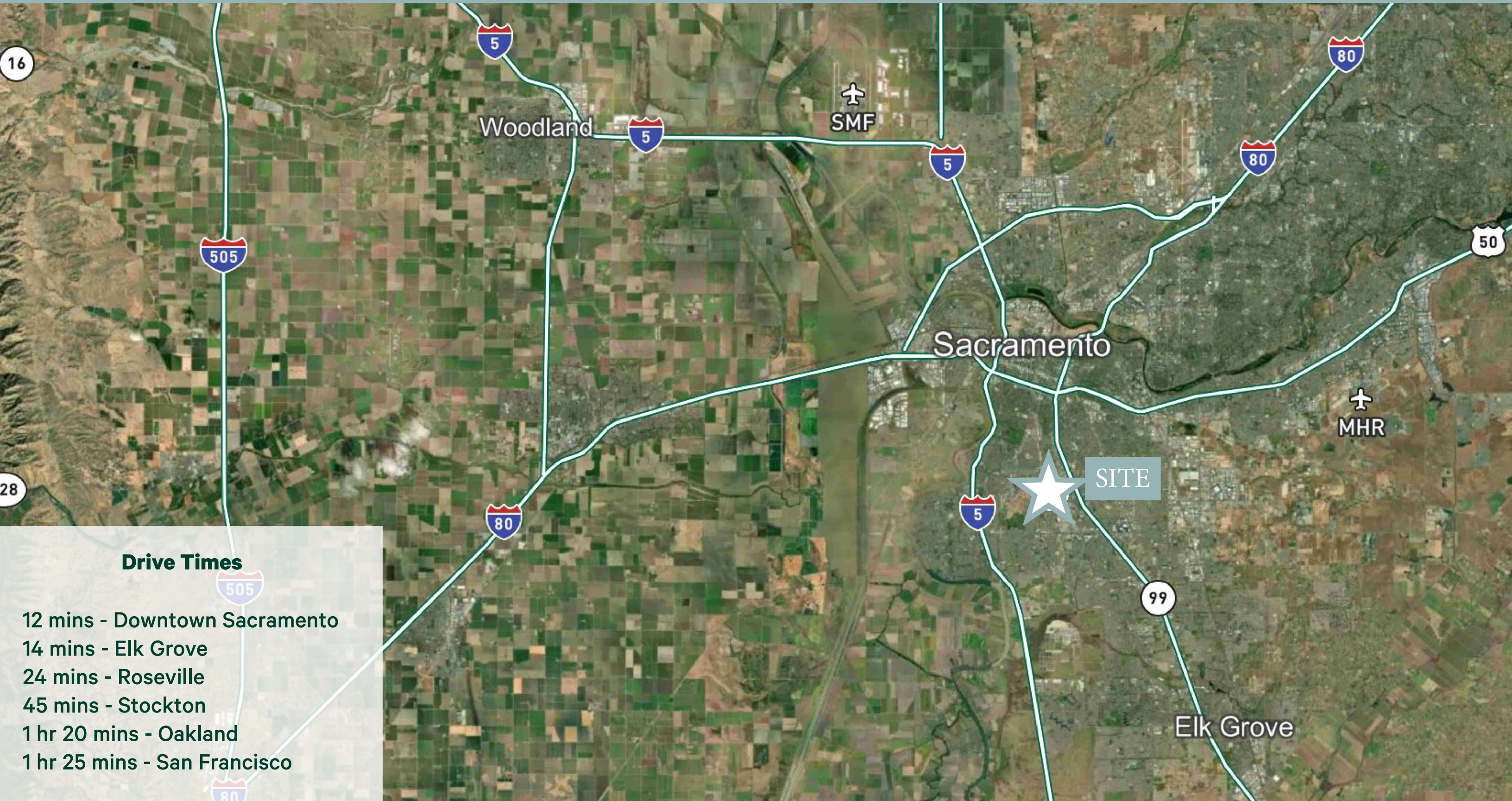
# Site Aerial



6201 27th Street  
Sacramento, CA

For Sublease

# Location



## Drive Times

- 12 mins - Downtown Sacramento
- 14 mins - Elk Grove
- 24 mins - Roseville
- 45 mins - Stockton
- 1 hr 20 mins - Oakland
- 1 hr 25 mins - San Francisco

**Tyler Howell**

Senior Associate

C: 916 781 4835

[tyler.howell1@cbre.com](mailto:tyler.howell1@cbre.com)

Lic. 02100245