

SUBLEASE OPPORTUNITY

1845 Woodall Rodgers Fwy | Suite 1100



Suite 1100:

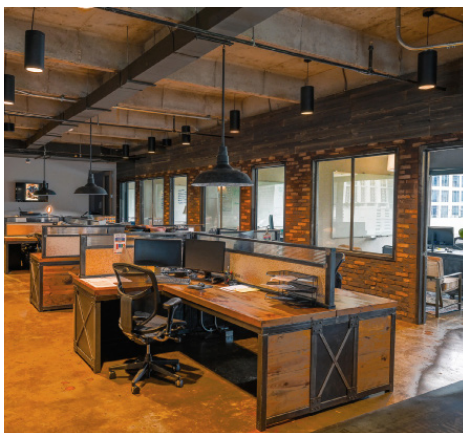
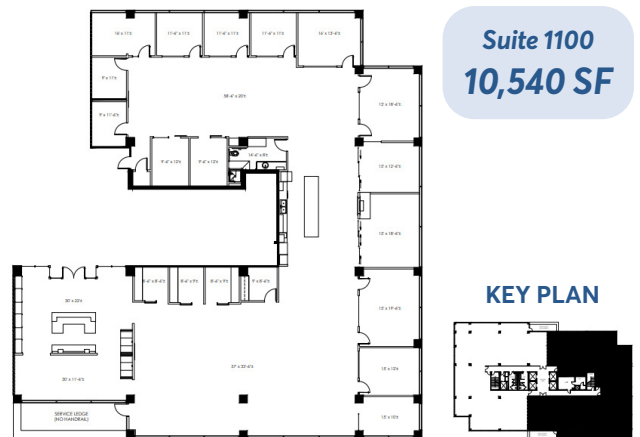
- \$18/SF start rate with motivated sublandlord
- 10,540 SF plug-and-play sublease, furniture negotiable
- Term through March 31, 2031

Key Features:

- Views of Klyde Warren Park, Uptown & Downtown
- 14 private offices, large conference room & three common meeting areas
- U-shaped layout with luxury restaurant-like finishes
- Fully equipped kitchen + reception with full bar
- 12' exposed ceilings & advanced security system

Building Amenities:

- Class A office with 24-hour controlled access
- Gensler-designed lobby & modern fitness center
- Concierge service, conferencing facilities, on-site banking & lobby restaurant (Hola Café)
- Monument signage available
- Walking distance to top dining & retail



FOR LEASING INFORMATION
CALL [214.974.4334](tel:214.974.4334)

Wyatt Anderson
wyatt.anderson@thirty-four.com

Sarah Kennington
sarah.kennington@thirty-four.com

SUBLEASE OPPORTUNITY

1845 Woodall Rodgers Fwy | Suite 1100



THIRTY-FOUR
COMMERCIAL

FOR LEASING INFORMATION

CALL [214.974.4334](tel:214.974.4334)

Wyatt Anderson

wyatt.anderson@thirty-four.com

Sarah Kennington

sarah.kennington@thirty-four.com